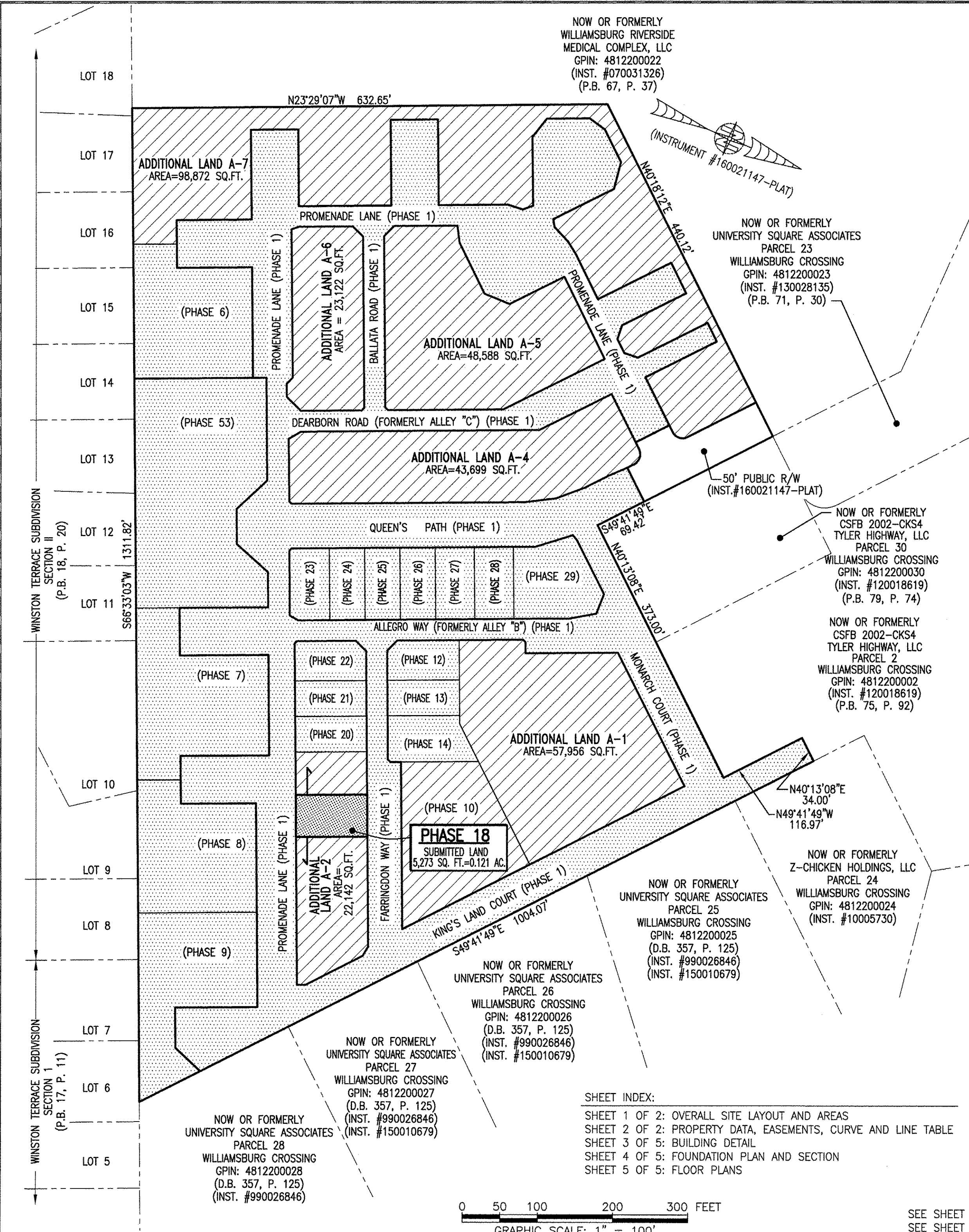
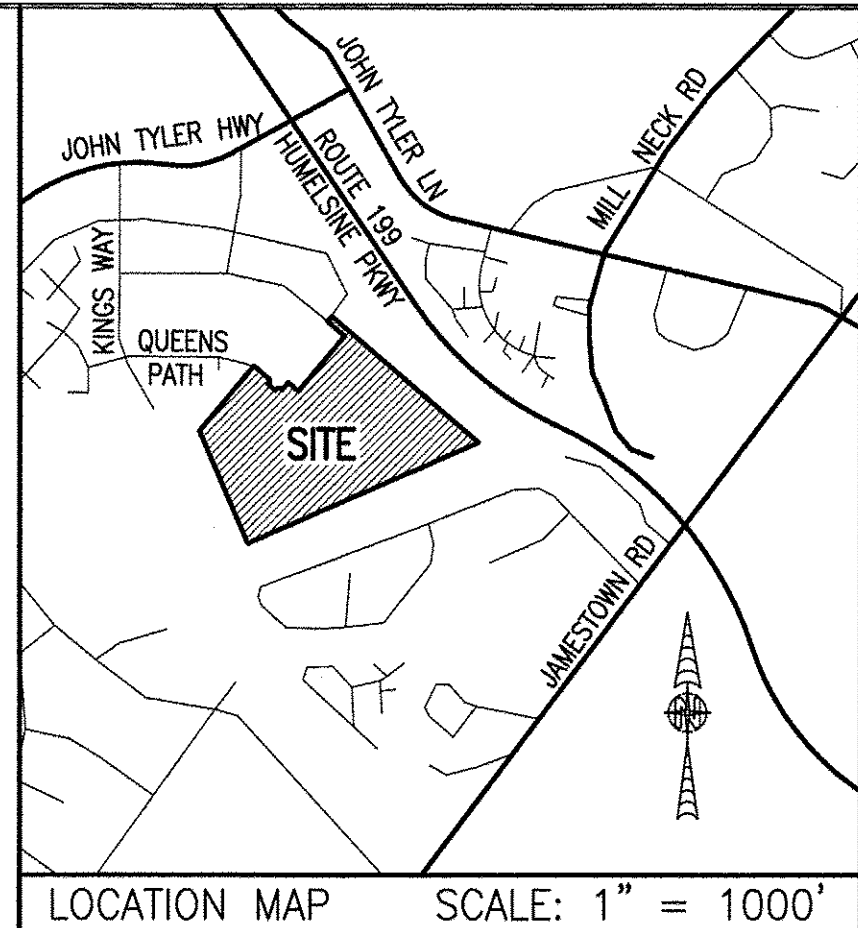


180019704



I HEREBY CERTIFY THAT THIS PLAT IS ACCURATE AND THAT IT COMPLIES WITH THE PROVISIONS OF THE CODE OF VIRGINIA OF 1950 AS AMENDED, § 55-79.58 AND I FURTHER CERTIFY THAT ALL IMPROVEMENTS THEREOF DEPICTED HEREON, PURSUANT TO THE CODE OF VIRGINIA § 55-79.58A, ARE SUBSTANTIALLY COMPLETE.



AREA TABLE				
PHASE	BLDG#	STATUS/RECORDATION	SQUARE FEET	ACRES
1	N/A	INSTR.#170011679	268,468	6.163
6	6	INSTR.#180018358	24,875	0.571
7	7	INSTR.#180014663	28,822	0.662
8	8	INSTR.#180010369	24,539	0.563
9	9	INSTR.#18003694	25,978	0.596
10	10	INSTR.#170023466	25,806	0.592
12	12	INSTR.#180016847	4,949	0.114
13	13	INSTR.#180010007	4,512	0.104
14	14	INSTR.#180009579	6,462	0.148
18	18	SUBSTANTIALLY COMPLETE	5,273	0.121
20	20	INSTR.#180016210	4,465	0.103
21	21	INSTR.#180016209	4,465	0.103
22	22	INSTR.#180016208	4,892	0.112
23	23	INSTR.#180001768	5,014	0.115
24	24	INSTR.#180005480	4,464	0.102
25	25	INSTR.#180001779	4,466	0.103
26	26	INSTR.#170021156	4,465	0.102
27	27	INSTR.#170021157	4,944	0.114
28	28	INSTR.#180001781	4,936	0.113
29	29	NOT YET RECORDED	10,569	0.243
53	N/A	INSTR.#180014662	49,886	1.145
REMAINS OF ADDITIONAL LAND A-1			57,956	1.330
ADDITIONAL LAND A-2			22,142	0.508
ADDITIONAL LAND A-4			43,699	1.003
ADDITIONAL LAND A-5			48,588	1.115
ADDITIONAL LAND A-6			23,122	0.531
ADDITIONAL LAND A-7			98,872	2.270
TOTAL: NEW PARCEL 29			816,629	18.747

**LEGAL DESCRIPTION**  
 PROPERTY SHOWN HEREON BEING "NEW PARCEL 29" CONTAINING 18.747 ACRES AS SHOWN ON "PLAT OF LOT LINE EXTINGUISHMENT BEING PARCELS 20 AND 29 OF WILLIAMSBURG CROSSING" PREPARED BY AES CONSULTING ENGINEERS, DATED 10-24-16 AND RECORDED AS INSTRUMENT NO. 160021147.

- NOTES:**
1. PHASE 18 BUILDING 18 IS SUBSTANTIALLY COMPLETE.
  2. EASEMENTS AND BUILDING LINES SHOWN HEREON PER THE FOLLOWING:
    - ALTA SURVEY BY AES CONSULTING ENGINEERS, DATED 3-23-15
    - PLAT BY AES CONSULTING ENGINEERS, DATED 10-24-16, INST.#160021147
    - PLAN OF DEVELOPMENT BY AES CONSULTING ENGINEERS, DATED 9-8-16

5 Large/Small Plat(s) Recorded herewith as # 180019704

City of Williamsburg & County of James City Circuit Court: This PLAT was recorded on 12-11-2018 at 1:08 AM (PM) PB PG Document # 180019704  
 MONA A. FOLEY, CLERK

NOW OR FORMERLY WILLIAMSBURG RIVERSIDE MEDICAL COMPLEX, LLC  
 GPIN: 4812200022 (INST. #070031326) (P.B. 67, P. 37)

NOW OR FORMERLY UNIVERSITY SQUARE ASSOCIATES PARCEL 23 WILLIAMSBURG CROSSING  
 GPIN: 4812200023 (INST. #130028135) (P.B. 71, P. 30)

NOW OR FORMERLY CSFB 2002-CKS4 TYLER HIGHWAY, LLC PARCEL 30 WILLIAMSBURG CROSSING  
 GPIN: 4812200030 (INST. #120018619) (P.B. 79, P. 74)

NOW OR FORMERLY CSFB 2002-CKS4 TYLER HIGHWAY, LLC PARCEL 2 WILLIAMSBURG CROSSING  
 GPIN: 4812200002 (INST. #120018619) (P.B. 75, P. 92)

NOW OR FORMERLY Z-CHICKEN HOLDINGS, LLC PARCEL 24 WILLIAMSBURG CROSSING  
 GPIN: 4812200024 (INST. #10005730)

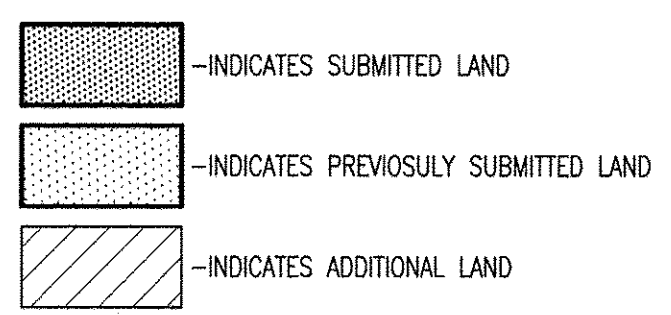
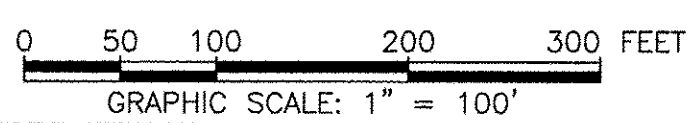
NOW OR FORMERLY UNIVERSITY SQUARE ASSOCIATES PARCEL 25 WILLIAMSBURG CROSSING  
 GPIN: 4812200025 (D.B. 357, P. 125) (INST. #990026846) (INST. #150010679)

NOW OR FORMERLY UNIVERSITY SQUARE ASSOCIATES PARCEL 26 WILLIAMSBURG CROSSING  
 GPIN: 4812200026 (D.B. 357, P. 125) (INST. #990026846) (INST. #150010679)

NOW OR FORMERLY UNIVERSITY SQUARE ASSOCIATES PARCEL 27 WILLIAMSBURG CROSSING  
 GPIN: 4812200027 (D.B. 357, P. 125) (INST. #990026846) (INST. #150010679)

NOW OR FORMERLY UNIVERSITY SQUARE ASSOCIATES PARCEL 28 WILLIAMSBURG CROSSING  
 GPIN: 4812200028 (D.B. 357, P. 125) (INST. #990026846)

**SHEET INDEX:**  
 SHEET 1 OF 2: OVERALL SITE LAYOUT AND AREAS  
 SHEET 2 OF 2: PROPERTY DATA, EASEMENTS, CURVE AND LINE TABLE  
 SHEET 3 OF 5: BUILDING DETAIL  
 SHEET 4 OF 5: FOUNDATION PLAN AND SECTION  
 SHEET 5 OF 5: FLOOR PLANS



JCC Subdivision Agent Approval Not Required EBC

THIS SHEET: OVERALL SITE LAYOUT AND AREAS

**PHASE 18**  
**CONDOMINIUM PLAT AND PLAN**  
 OF  
**THE PROMENADE**  
 AT  
**JOHN TYLER**  
 A CONDOMINIUM  
 JAMES CITY COUNTY, VIRGINIA

Jo# 160921  
 Hayden Frye and Associates, Inc.  
 Land Surveyors  
 333 KELLAM ROAD, SUITE 200  
 VIRGINIA BEACH, VA., 23462  
 PH: (757) 491-7228 FX:(757) 491-7229

DATE: DECEMBER 5, 2018  
 SCALE: 1"=100'  
 SHEET 1 OF 5 THIS PHASE