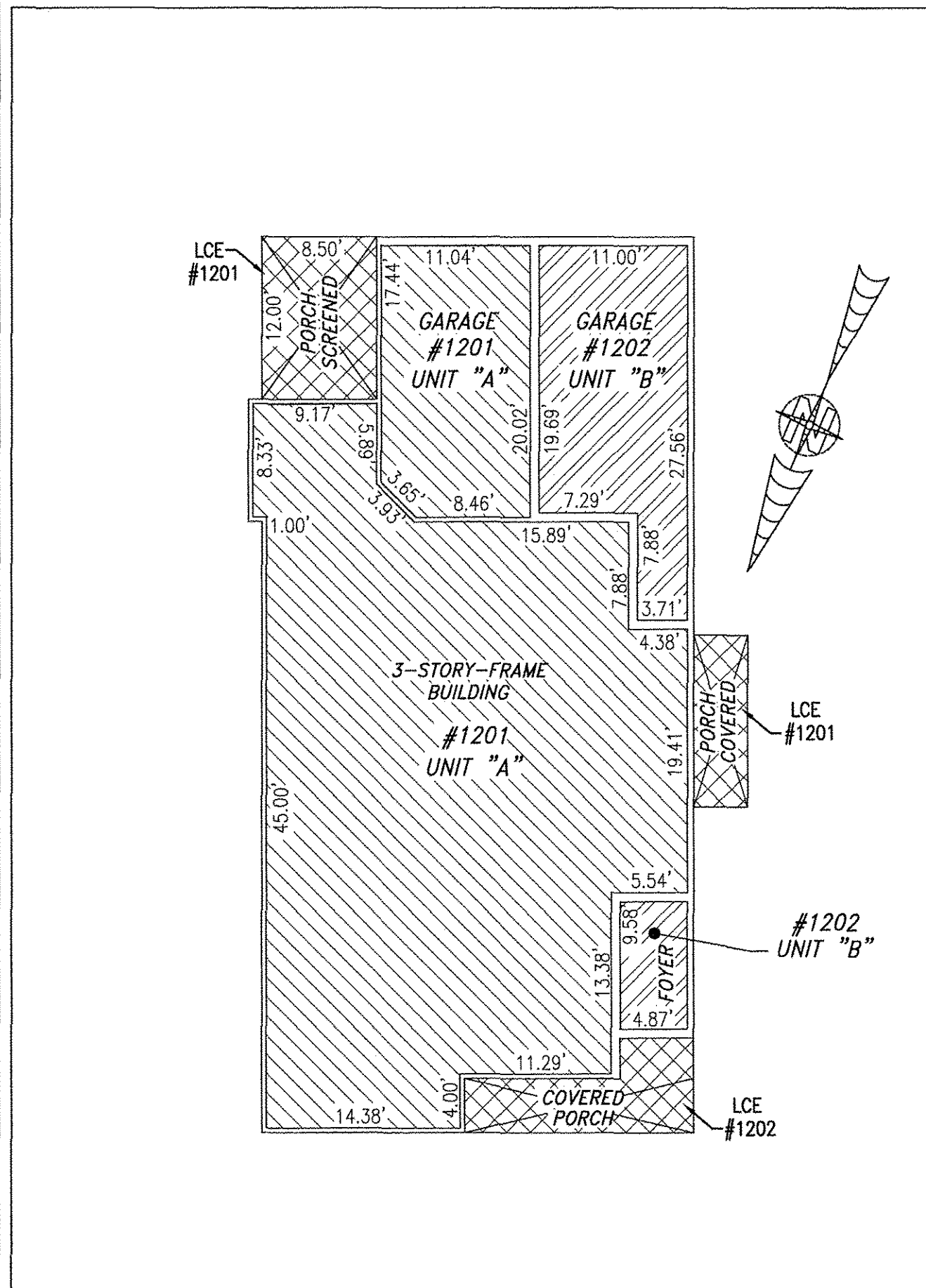
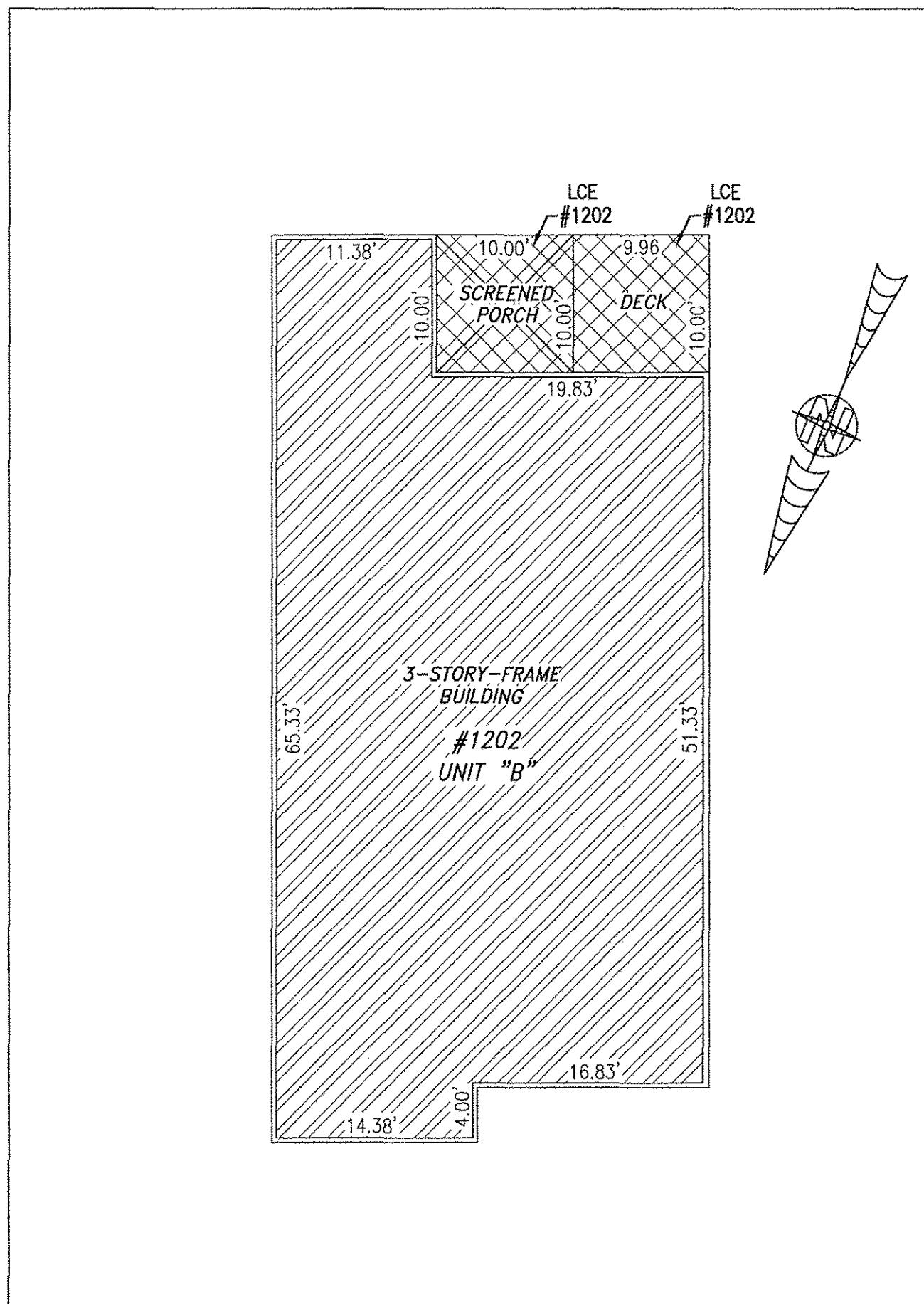


180016847

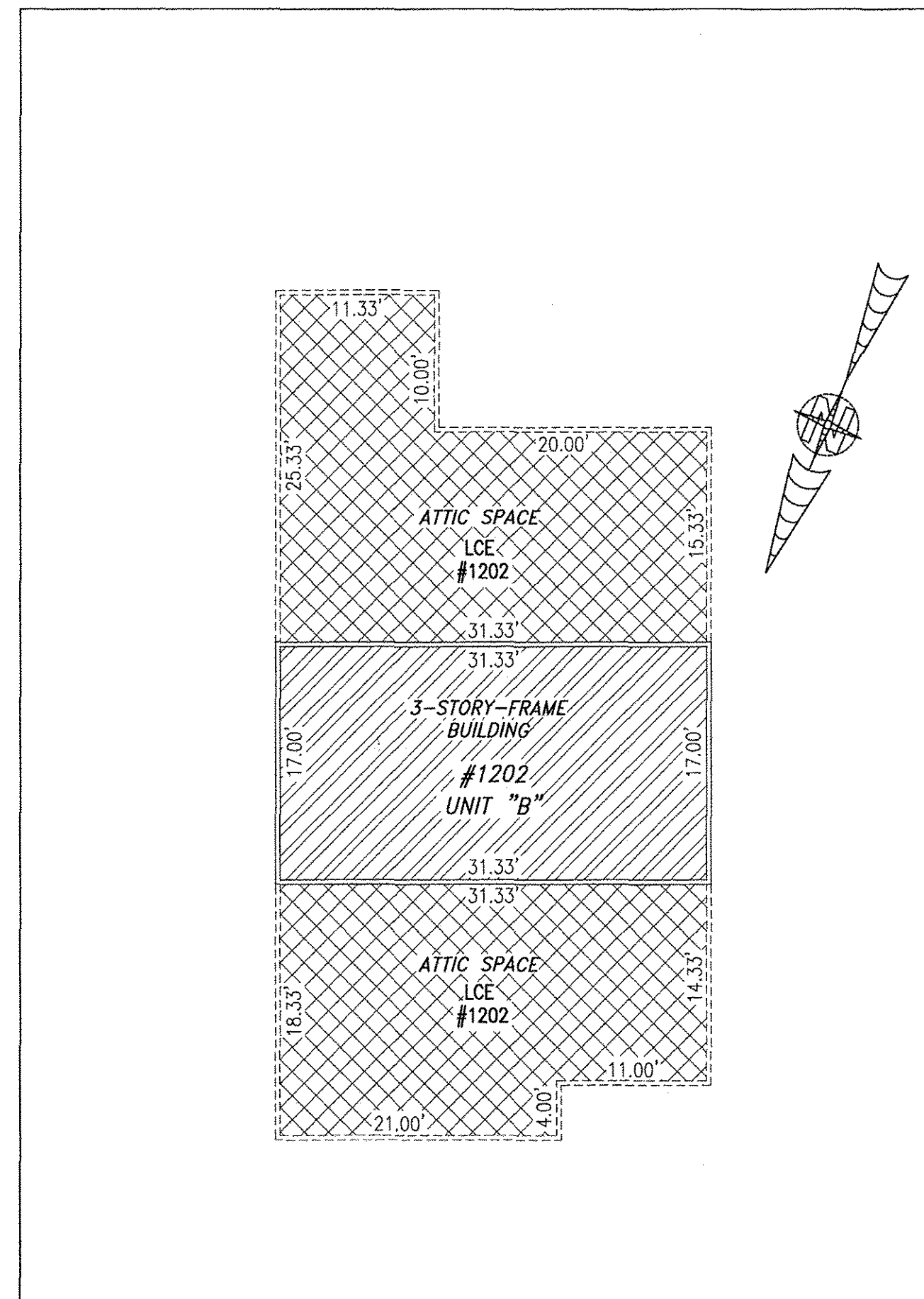
BUILDING 12 (DUPLEX)



FIRST FLOOR



SECOND FLOOR

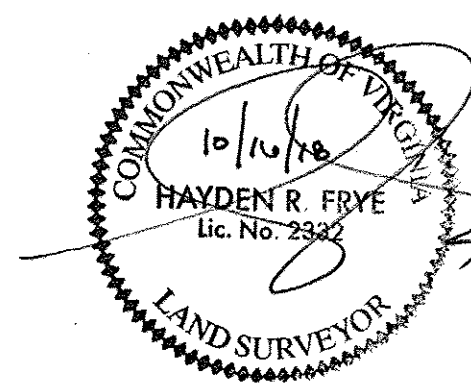


THIRD FLOOR

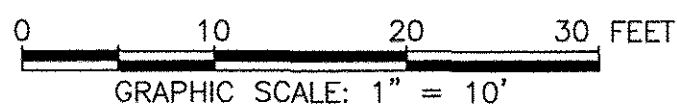
I HEREBY CERTIFY THAT THIS PLAN IS ACCURATE AND THAT IT COMPLIES WITH THE PROVISIONS OF THE CODE OF VIRGINIA OF 1950 AS AMENDED, § 55-79.58 AND I FURTHER CERTIFY THAT ALL UNITS THEREOF DEPICTED HEREON, PURSUANT TO THE CODE OF VIRGINIA § 55-79.58B, ARE SUBSTANTIALLY COMPLETE.

5 Large/Small Plat(s) Recorded
herewith as #180016847

City of Williamsburg & County of James City
Circuit Court: This PLAT was recorded on
Oct 19 2018
at 2:31 AM/PM, PB PG
Document # 180016847
MONA A. FOLEY, CLERK
Mona A. Foley, Clerk



UNIT ID	UNIT DESCRIPTION	UNIT ADDRESS
A	-INDICATES AREA OF UNIT 1201	#1201 FARRINGDON WAY
B	-INDICATES AREA OF UNIT 1202	#1202 FARRINGDON WAY
	-INDICATES COMMON ELEMENT	
	-INDICATES LIMITED COMMON ELEMENT	

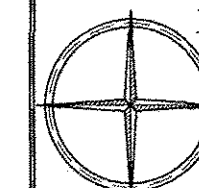


JCC Subdivision Agent
Approval Not Required

THIS SHEET: FLOOR PLANS

PHASE 12
CONDOMINIUM PLAT AND PLAN
OF
THE PROMENADE
AT
JOHN TYLER
A CONDOMINIUM
JAMES CITY COUNTY, VIRGINIA

Job# 160921



Hayden Frye and Associates, Inc.

Land Surveyors

333 KELLAM ROAD, SUITE 200
VIRGINIA BEACH, VA., 23462
PH: (757) 491-7228 FX: (757) 491-7229

DATE: OCTOBER 15, 2018

SCALE: 1"=10'

SHEET 5 OF 5 THIS PHASE