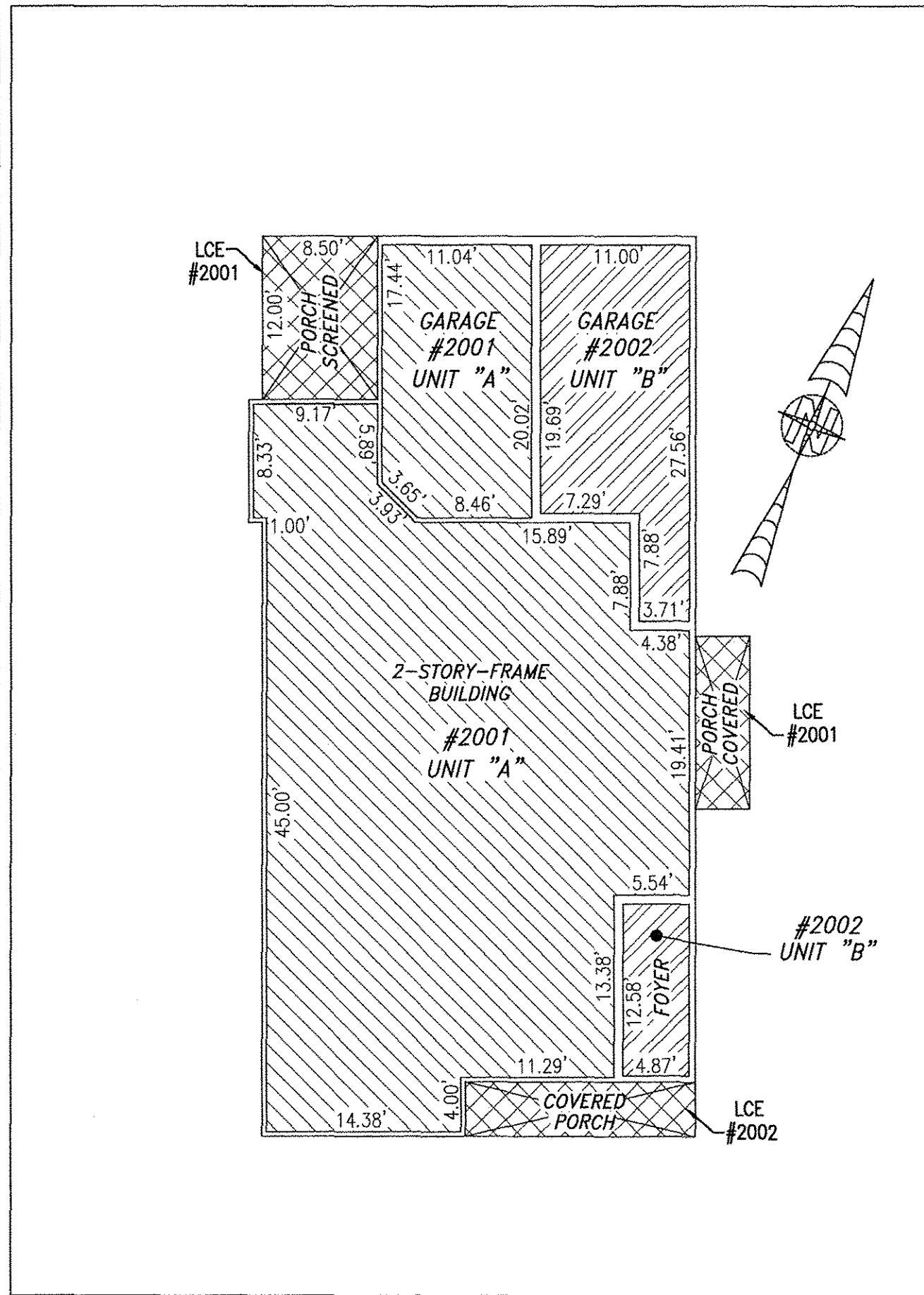
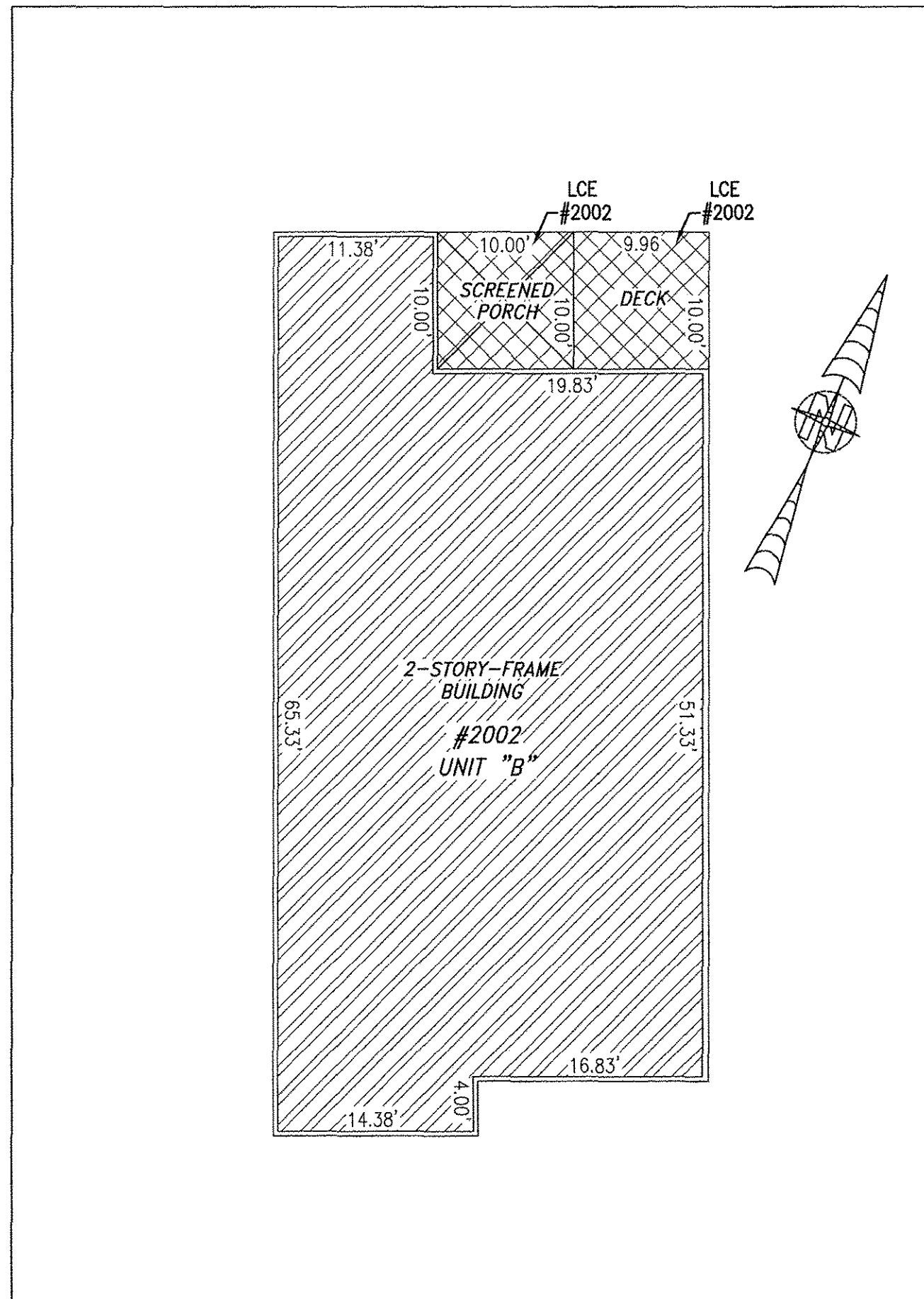


180016210

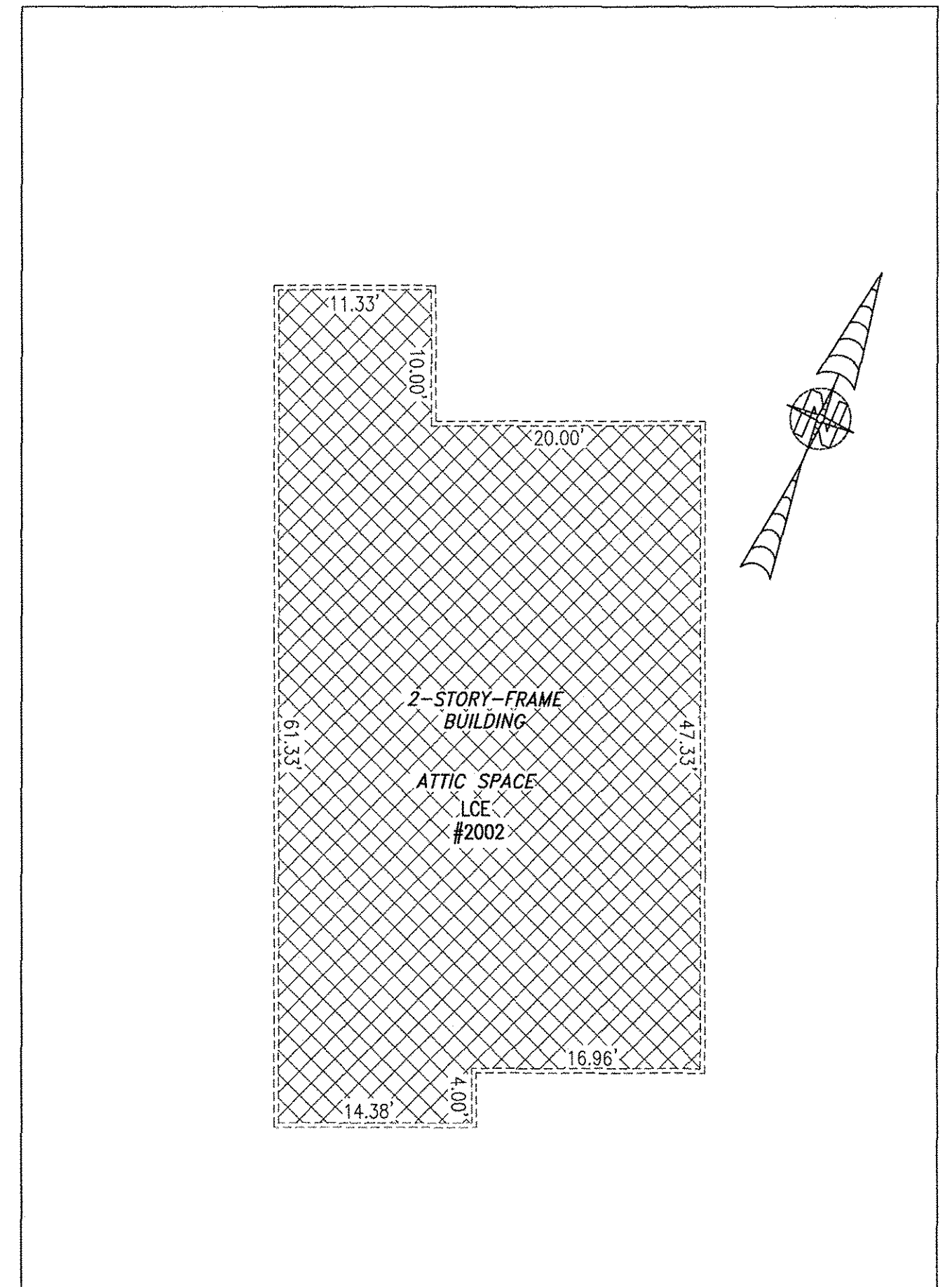
BUILDING 20 (DUPLEX)



FIRST FLOOR



SECOND FLOOR

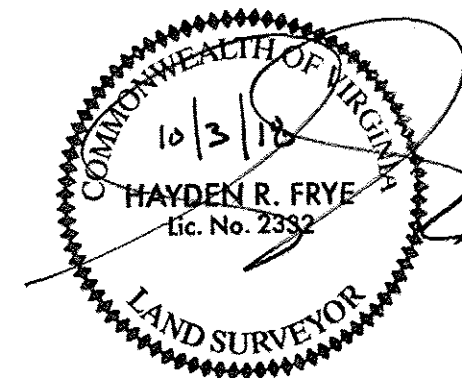


THIRD FLOOR

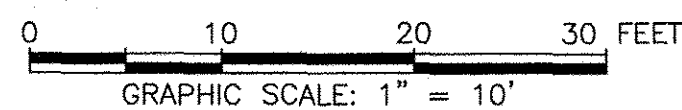
I HEREBY CERTIFY THAT THIS PLAN IS ACCURATE AND THAT IT COMPLIES WITH THE PROVISIONS OF THE CODE OF VIRGINIA OF 1950 AS AMENDED, § 55-79.58 AND I FURTHER CERTIFY THAT ALL UNITS THEREOF DEPICTED HEREON, PURSUANT TO THE CODE OF VIRGINIA § 55-79.58B, ARE SUBSTANTIALLY COMPLETE.

5 Large/Small Plat(s) Recorded
herewith as # 180016210

City of Williamsburg & County of James City
Circuit Court: This PLAT was recorded on
Oct 11, 2018
at 8:57 AM/PM; PB PG
Document # 180016210
MONA A. FOLEY, CLERK
Maad J. Frye Clerk



JCC Subdivision Agent Approval Not Required *Etc*

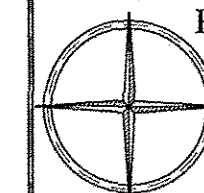


UNIT ID	UNIT DESCRIPTION	UNIT ADDRESS
A	-INDICATES AREA OF UNIT 2001	#2001 PROMENADE LANE
B	-INDICATES AREA OF UNIT 2002	#2002 PROMENADE LANE
	-INDICATES COMMON ELEMENT	
	-INDICATES LIMITED COMMON ELEMENT	

THIS SHEET: FLOOR PLANS

PHASE 20
CONDOMINIUM PLAT AND PLAN
OF
THE PROMENADE
AT
JOHN TYLER
A CONDOMINIUM
JAMES CITY COUNTY, VIRGINIA

Jo# 160921



Hayden Frye and Associates, Inc.
Land Surveyors
333 KELLAM ROAD, SUITE 200
VIRGINIA BEACH, VA, 23462
PH: (757) 491-7228 FX:(757) 491-7229

DATE: OCTOBER 1, 2018
SCALE: 1"=10'
SHEET 5 OF 5 THIS PHASE