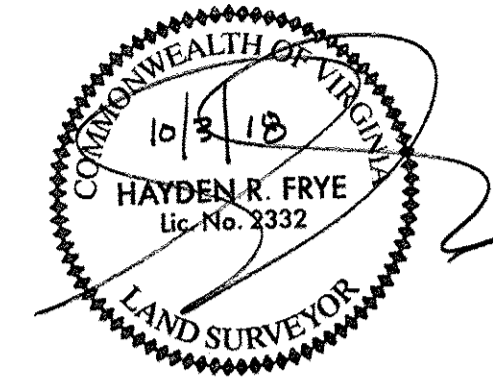
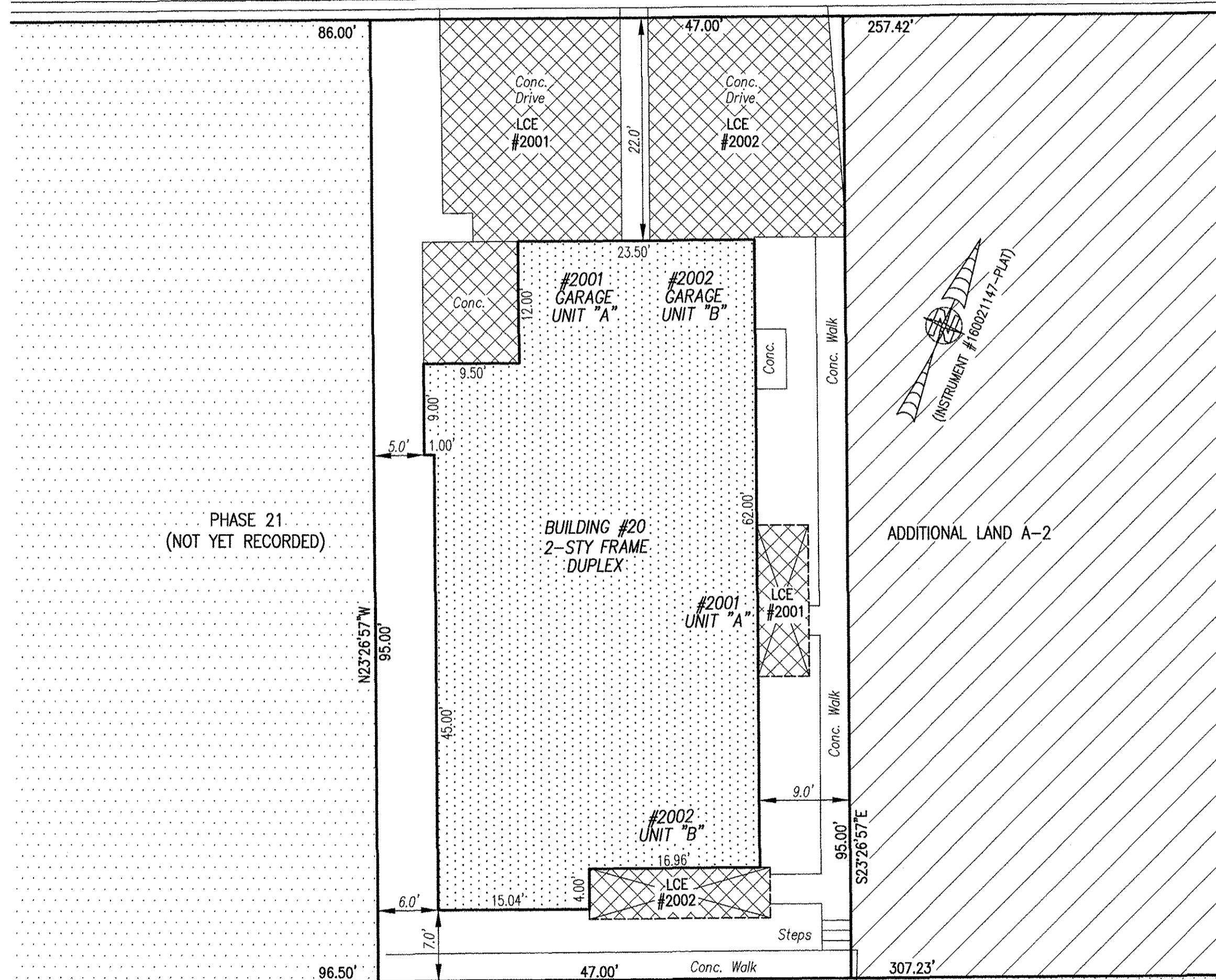


180016210

I HEREBY CERTIFY THAT THIS PLAT IS ACCURATE AND THAT IT COMPLIES WITH THE PROVISIONS OF THE CODE OF VIRGINIA OF 1950 AS AMENDED, § 55-79.58 AND I FURTHER CERTIFY THAT ALL IMPROVEMENTS THEREOF DEPICTED HEREON, PURSUANT TO THE CODE OF VIRGINIA § 55-79.58A, ARE SUBSTANTIALLY COMPLETE.



FARRINGTON (PRIVATE) WAY  
(FORMERLY ALLEY A)  
(PHASE 1 INSTR.#170011679)  
(PREVIOUSLY SUBMITTED LAND)  
Asphalt  
N66°33'03"E 390.42' (O/A)



- INDICATES PREVIOUSLY SUBMITTED LAND
- INDICATES BUILDING AREA (SEE PLANS FOR UNIT DIMENSIONS)
- INDICATES LIMITED COMMON ELEMENT (LCE) ASSIGNED TO A UNIT # UNIT ASSIGNED
- INDICATES COMMON ELEMENT (EXCLUDING AREAS OUTSIDE SUBMITTED LAND)
- INDICATES ADDITIONAL LAND

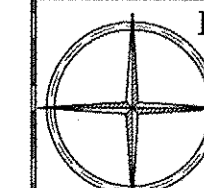
5 Large/Small Plat(s) Recorded  
herewith as # 180016210

City of Williamsburg & County of James City  
Circuit Court: This PLAT was recorded on  
Oct. 11, 2018  
at 8:57 AM/PM: PB PG  
Document # 180016210  
MONA A. FOLEY, CLERK  
Mona A. Foley, Clerk

THIS SHEET: BUILDING DETAIL

**PHASE 20**  
**CONDOMINIUM PLAT AND PLAN**  
OF  
**THE PROMENADE**  
AT  
**JOHN TYLER**  
A CONDOMINIUM  
JAMES CITY COUNTY, VIRGINIA

Jo# 160921



Hayden Frye and Associates, Inc.

**Land Surveyors**

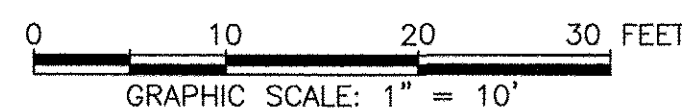
333 KELLAM ROAD, SUITE 200  
VIRGINIA BEACH, VA, 23462  
PH: (757) 491-7228 FX: (757) 491-7229

DATE: OCTOBER 1, 2018

SCALE: 1"=10'

SHEET 3 OF 5 THIS PHASE

JCC Subdivision Agent EGT  
Approval Not Required



S66°33'03"W 450.73' (O/A)  
Asphalt  
**PROMENADE (PRIVATE) LANE**  
(PHASE 1 INSTR.#170011679)  
(PREVIOUSLY SUBMITTED LAND)