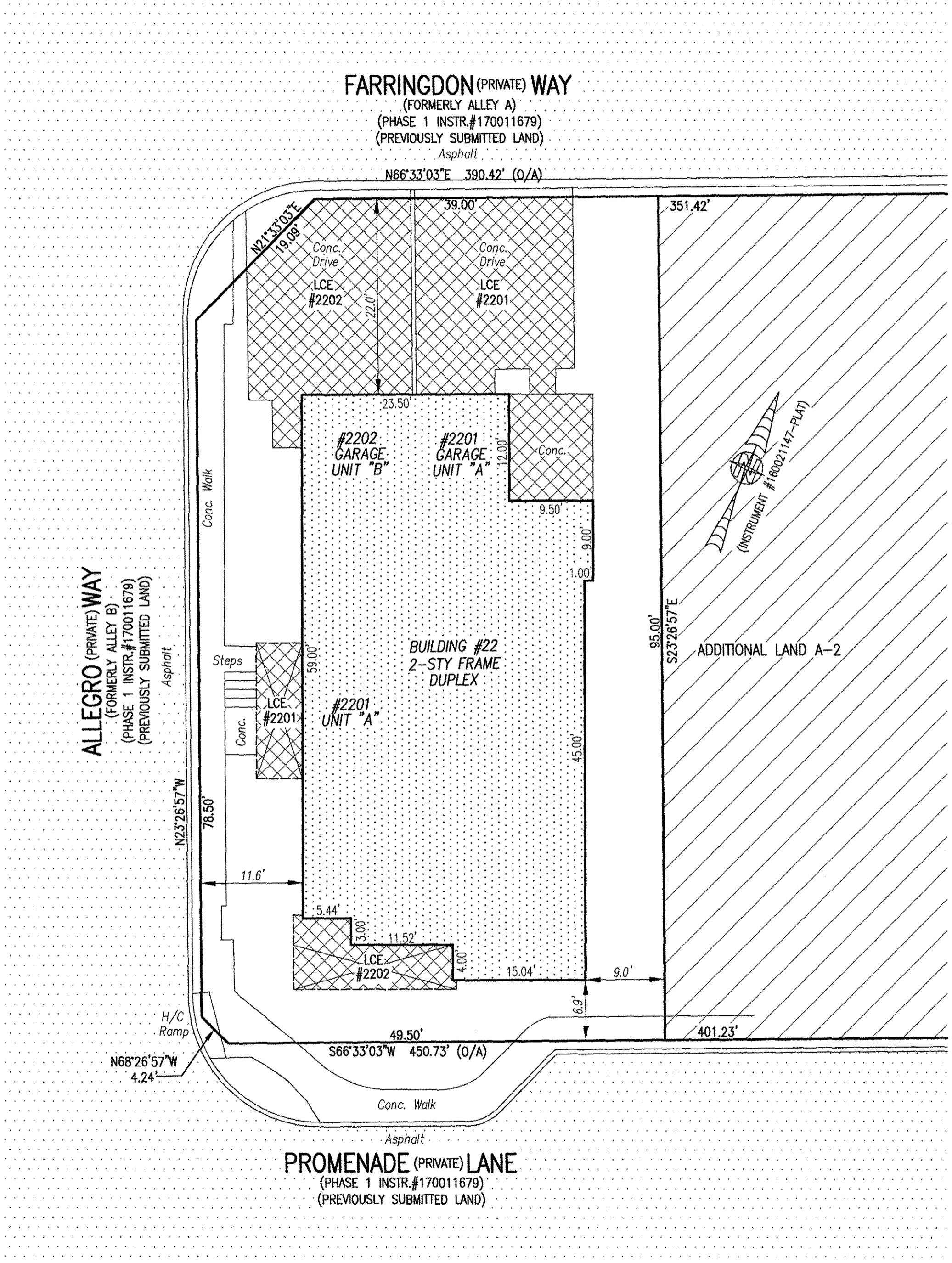
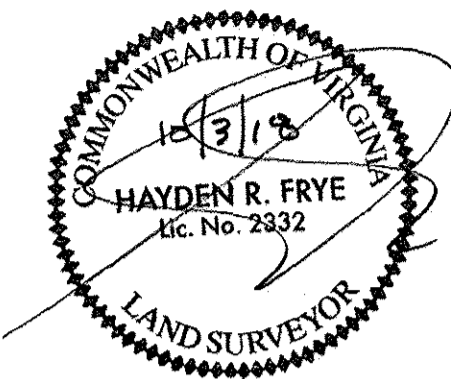


I HEREBY CERTIFY THAT THIS PLAT IS ACCURATE AND THAT IT COMPLIES WITH THE PROVISIONS OF THE CODE OF VIRGINIA OF 1950 AS AMENDED, § 55-79.58 AND I FURTHER CERTIFY THAT ALL IMPROVEMENTS THEREOF DEPICTED HEREON, PURSUANT TO THE CODE OF VIRGINIA § 55-79.58A, ARE SUBSTANTIALLY COMPLETE.



- INDICATES PREVIOUSLY SUBMITTED LAND
- INDICATES BUILDING AREA (SEE PLANS FOR UNIT DIMENSIONS)
- INDICATES LIMITED COMMON ELEMENT (LCE) ASSIGNED TO A UNIT # UNIT ASSIGNED
- INDICATES COMMON ELEMENT (EXCLUDING AREAS OUTSIDE SUBMITTED LAND)
- INDICATES ADDITIONAL LAND

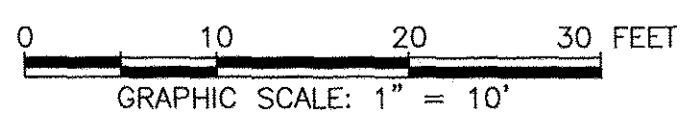
5 Large/Small Plat(s) Recorded  
herewith as # 180016208

City of Williamsburg & County of James City  
Circuit Court: This PLAT was recorded on  
10-11-2018  
at 8:49 AM, PB PG  
Document # 180016208  
MONA A. FOLEY, CLERK  
Elyzabeth O'Connor DE., Clerk

THIS SHEET: BUILDING DETAIL

**PHASE 22**  
**CONDOMINIUM PLAT AND PLAN**  
OF  
**THE PROMENADE**  
AT  
**JOHN TYLER**  
A CONDOMINIUM  
JAMES CITY COUNTY, VIRGINIA

Hayden Frye and Associates, Inc.  
**Land Surveyors** DATE: SEPTEMBER 29, 2018  
333 KELLAM ROAD, SUITE 200 SCALE: 1"=10'  
VIRGINIA BEACH, VA., 23462  
PH: (757) 491-7228 FX: (757) 491-7229 SHEET 3 OF 5 THIS PHASE



JCC Subdivision Agent Approval Not Required