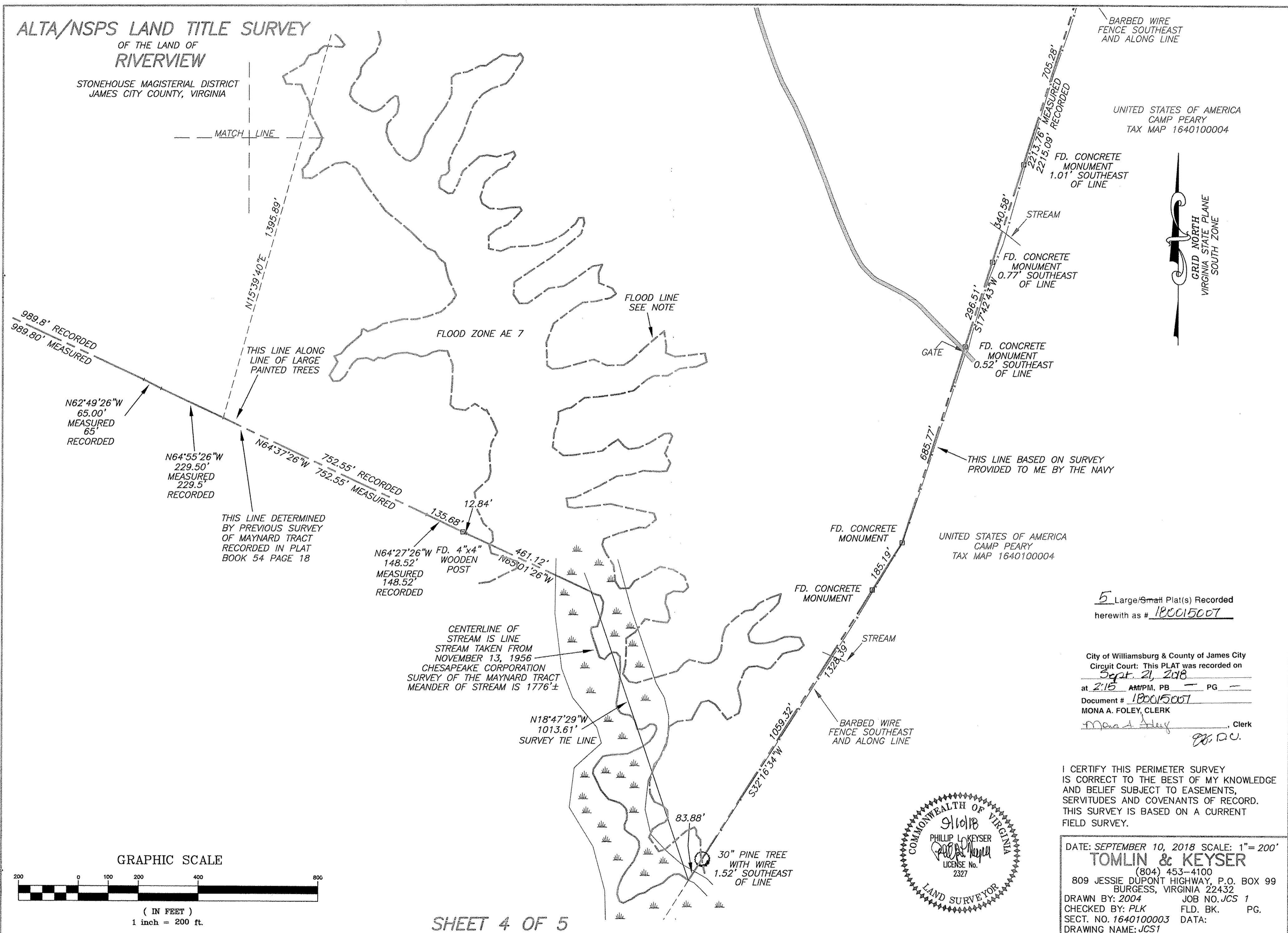


180015007

ALTA/NSPS LAND TITLE SURVEY OF THE LAND OF RIVERVIEW

STONEHOUSE MAGISTERIAL DISTRICT
JAMES CITY COUNTY, VIRGINIA

UNITED STATES OF AMERICA
CAMP PEARY
TAX MAP 1640100004



989.8' RECORDED
989.80' MEASURED

N62°49'26"W
65.00'
MEASURED
65'
RECORDED

N64°55'26"W
229.50'
MEASURED
229.5'
RECORDED

THIS LINE DETERMINED
BY PREVIOUS SURVEY
OF MAYNARD TRACT
RECORDED IN PLAT
BOOK 54 PAGE 18

N15°39'40"E
1395.89'

THIS LINE ALONG
LINE OF LARGE
PAINTED TREES

N64°37'26"W
752.55'
MEASURED
752.55' RECORDED

N64°27'26"W
148.52'
MEASURED
148.52'
RECORDED

CENTERLINE OF
STREAM IS LINE
STREAM TAKEN FROM
NOVEMBER 13, 1956
CHESAPEAKE CORPORATION
SURVEY OF THE MAYNARD TRACT
MEANDER OF STREAM IS 1776'±

N18°47'29"W
1013.61'
SURVEY TIE LINE

30" PINE TREE
WITH WIRE
1.52' SOUTHEAST
OF LINE

FD. CONCRETE
MONUMENT

FD. CONCRETE
MONUMENT

FD. CONCRETE
MONUMENT

UNITED STATES OF AMERICA
CAMP PEARY
TAX MAP 1640100004

FD. CONCRETE
MONUMENT
0.52' SOUTHEAST
OF LINE

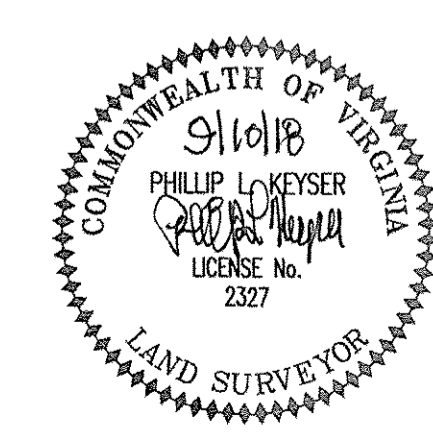
FD. CONCRETE
MONUMENT
0.77' SOUTHEAST
OF LINE

FD. CONCRETE
MONUMENT
1.01' SOUTHEAST
OF LINE

5 Large/Small Plat(s) Recorded
herewith as # 180015007

City of Williamsburg & County of James City
Circuit Court: This PLAT was recorded on
Sept. 21, 2018
at 2:15 AM/PM, PB — PG —
Document # 180015007
MONA A. FOLEY, CLERK
Mona A. Foley, Clerk
PLK

I CERTIFY THIS PERIMETER SURVEY
IS CORRECT TO THE BEST OF MY KNOWLEDGE
AND BELIEF SUBJECT TO EASEMENTS,
SERVITUDES AND COVENANTS OF RECORD.
THIS SURVEY IS BASED ON A CURRENT
FIELD SURVEY.



DATE: SEPTEMBER 10, 2018 SCALE: 1" = 200'
TOMLIN & KEYSER
(804) 453-4100
809 JESSIE DUPONT HIGHWAY, P.O. BOX 99
BURGESS, VIRGINIA 22432
DRAWN BY: 2004 JOB NO. JCS 1
CHECKED BY: PLK FLD. BK. PG.
SECT. NO. 1640100003 DATA:
DRAWING NAME: JCS1

