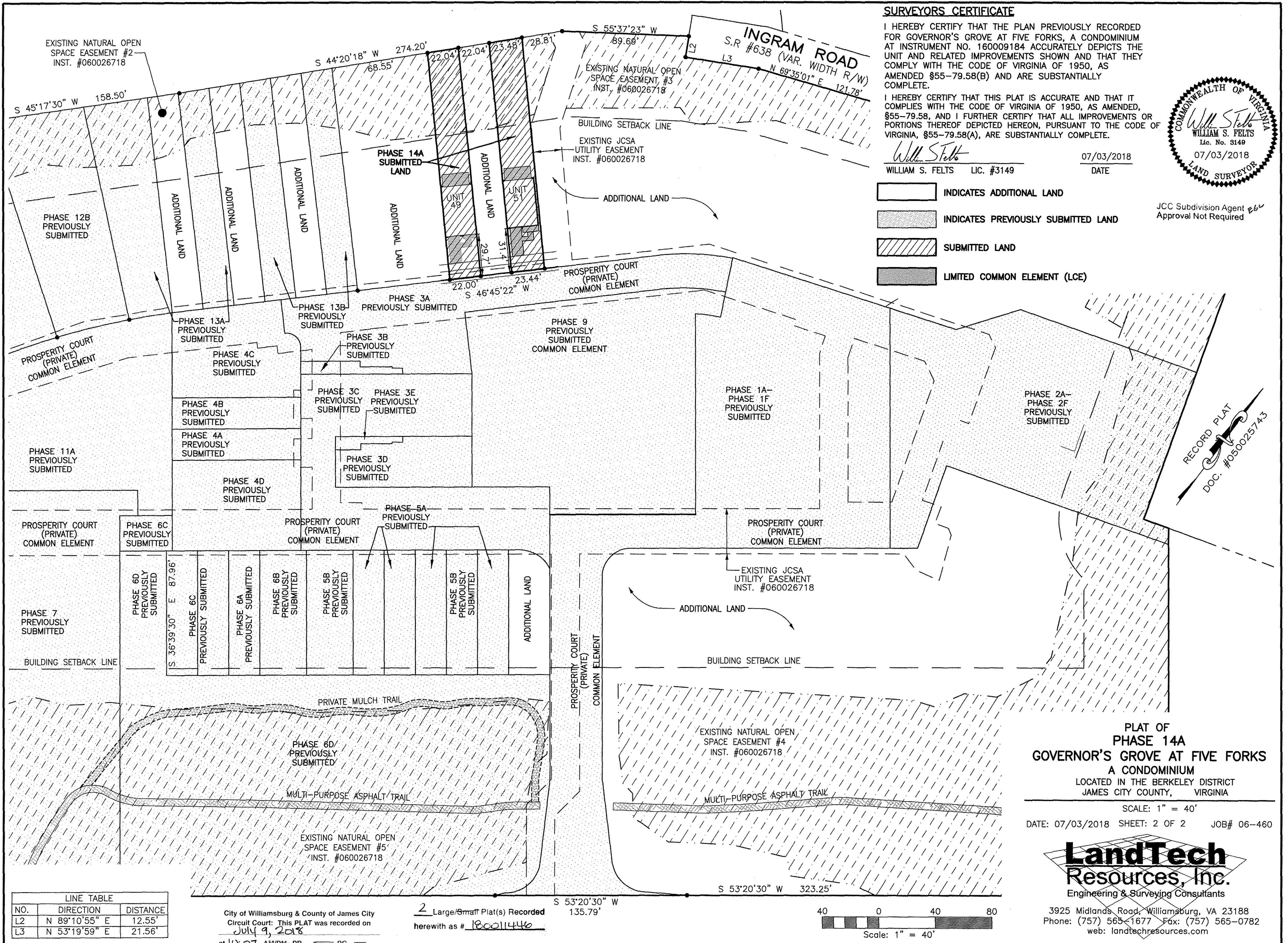


180011446

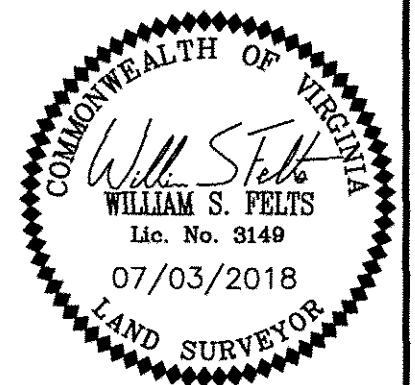


SURVEYORS CERTIFICATE

I HEREBY CERTIFY THAT THE PLAN PREVIOUSLY RECORDED FOR GOVERNOR'S GROVE AT FIVE FORKS, A CONDOMINIUM AT INSTRUMENT NO. 160009184 ACCURATELY DEPICTS THE UNIT AND RELATED IMPROVEMENTS SHOWN AND THAT THEY COMPLY WITH THE CODE OF VIRGINIA OF 1950, AS AMENDED §55-79.58(B) AND ARE SUBSTANTIALLY COMPLETE.

I HEREBY CERTIFY THAT THIS PLAT IS ACCURATE AND THAT IT COMPLIES WITH THE CODE OF VIRGINIA OF 1950, AS AMENDED, §55-79.58, AND I FURTHER CERTIFY THAT ALL IMPROVEMENTS OR PORTIONS THEREOF DEPICTED HEREON, PURSUANT TO THE CODE OF VIRGINIA, §55-79.58(A), ARE SUBSTANTIALLY COMPLETE.

William S. Felts
 WILLIAM S. FELTS LIC. #3149
 DATE 07/03/2018



- INDICATES ADDITIONAL LAND
- INDICATES PREVIOUSLY SUBMITTED LAND
- SUBMITTED LAND
- LIMITED COMMON ELEMENT (LCE)

JCC Subdivision Agent *ebc*
 Approval Not Required

RECORD PLAT
 DOC. #050025743

PLAT OF PHASE 14A
GOVERNOR'S GROVE AT FIVE FORKS
 A CONDOMINIUM
 LOCATED IN THE BERKELEY DISTRICT
 JAMES CITY COUNTY, VIRGINIA

SCALE: 1" = 40'
 DATE: 07/03/2018 SHEET: 2 OF 2 JOB# 06-460

LandTech Resources, Inc.
 Engineering & Surveying Consultants

3925 Midlands Road, Williamsburg, VA 23188
 Phone: (757) 565-1677 Fax: (757) 565-0782
 web: landtechresources.com

LINE TABLE		
NO.	DIRECTION	DISTANCE
L2	N 89°10'55" E	12.55'
L3	N 53°19'59" E	21.56'

City of Williamsburg & County of James City
 Circuit Court: This PLAT was recorded on
July 9, 2018
 at 10:07 AM/PM-PB PG
 Document # **180011446**
 MONA A. FOLEY, CLERK
Mona A. Foley
 Clerk

2 Large/Small Plat(s) Recorded
 herewith as # **180011446**

