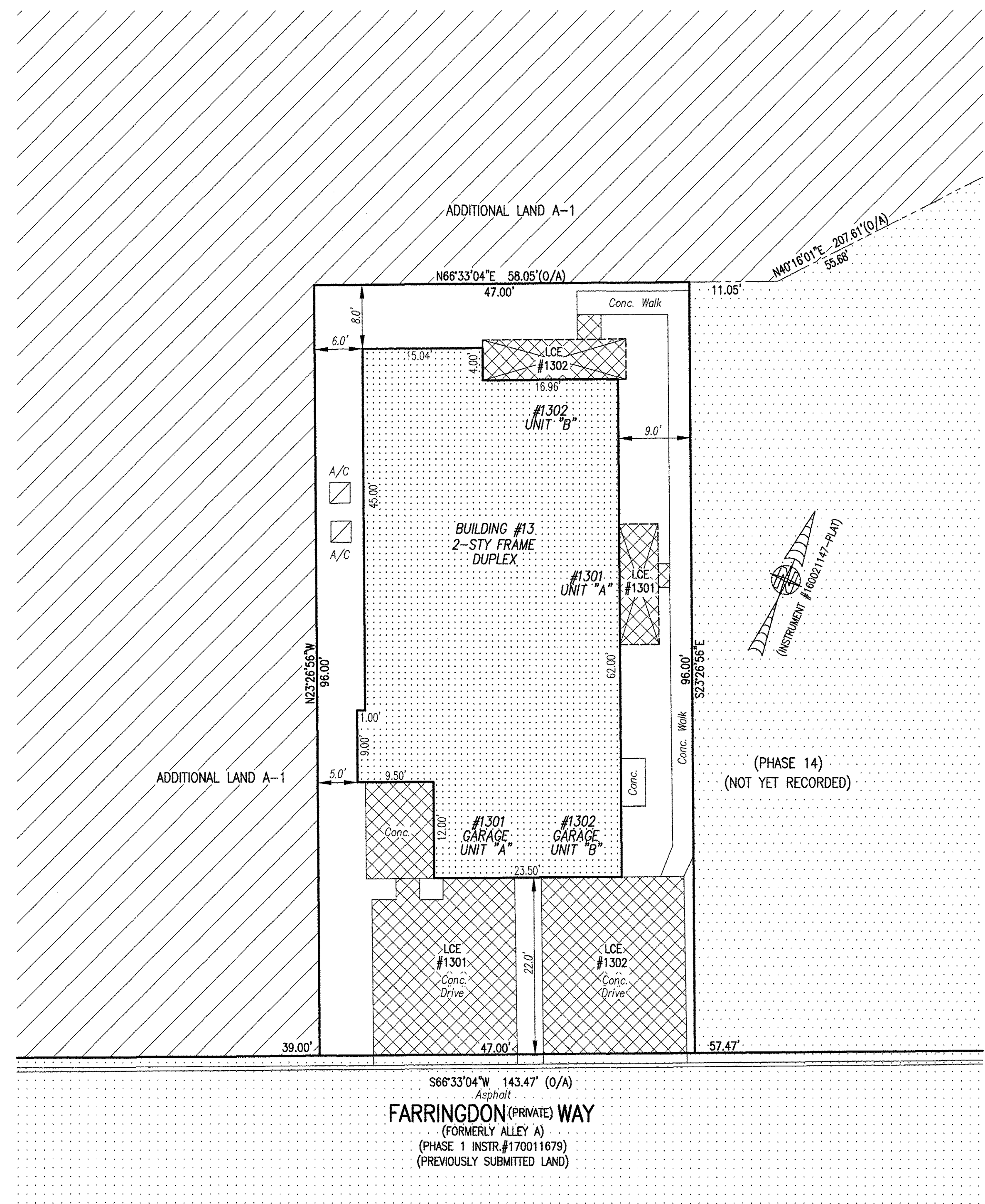
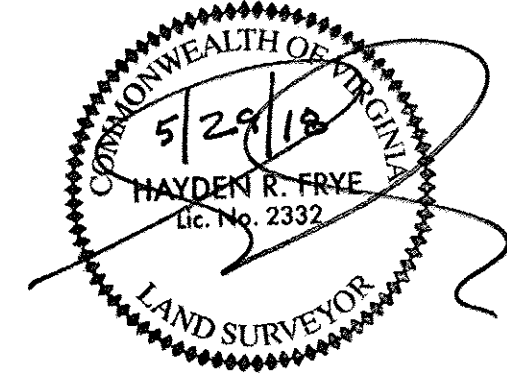
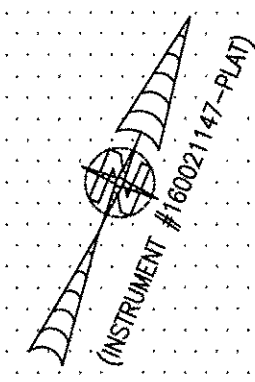


180010007

I HEREBY CERTIFY THAT THIS PLAT IS ACCURATE AND THAT IT COMPLIES WITH THE PROVISIONS OF THE CODE OF VIRGINIA OF 1950 AS AMENDED, § 55-79.58 AND I FURTHER CERTIFY THAT ALL IMPROVEMENTS THEREOF DEPICTED HEREON, PURSUANT TO THE CODE OF VIRGINIA § 55-79.58A, ARE SUBSTANTIALLY COMPLETE.



- INDICATES PREVIOUSLY SUBMITTED LAND
  - INDICATES BUILDING AREA (SEE PLANS FOR UNIT DIMENSIONS)
  - INDICATES LIMITED COMMON ELEMENT (LCE) ASSIGNED TO A UNIT # UNIT ASSIGNED
  - INDICATES COMMON ELEMENT (EXCLUDING AREAS OUTSIDE SUBMITTED LAND)
  - INDICATES ADDITIONAL LAND
- LCE #1000 (EXAMPLE UNIT #)



(PHASE 14)  
(NOT YET RECORDED)

5 Large/Small Plat(s) Recorded  
herewith as # 180010007

City of Williamsburg & County of James City  
Circuit Court: This PLAT was recorded on  
June 13, 2018  
at 11:52 AM/PM; PB PG  
Document # 180010007  
MONA A. FOLEY, CLERK  
*Mona A. Foley*, Clerk

JCC Subdivision Agent *Ebc*  
Approval Not Required

THIS SHEET: BUILDING DETAIL

**PHASE 13**  
**CONDOMINIUM PLAT AND PLAN**  
OF  
**THE PROMENADE**  
AT  
**JOHN TYLER**  
A CONDOMINIUM  
JAMES CITY COUNTY, VIRGINIA

Jo# 160921

Hayden Frye and Associates, Inc.  
**Land Surveyors**  
333 KELLAM ROAD, SUITE 200  
VIRGINIA BEACH, VA., 23462  
PH: (757) 491-7228 FX: (757) 491-7229

DATE: MAY 24, 2018  
SCALE: 1"=10'  
SHEET 3 OF 5 THIS PHASE

S66°33'04"W 143.47' (O/A)  
Asphalt  
**FARRINGTON (PRIVATE) WAY**  
(FORMERLY ALLEY A)  
(PHASE 1 INSTR.#170011679)  
(PREVIOUSLY SUBMITTED LAND)

