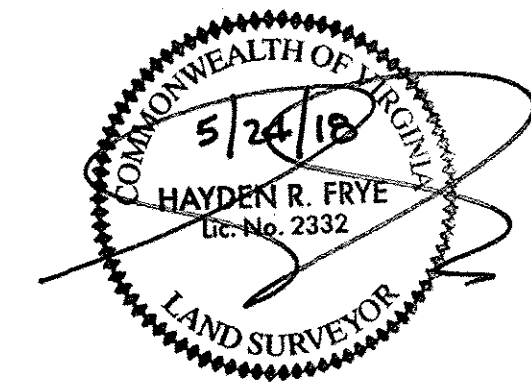


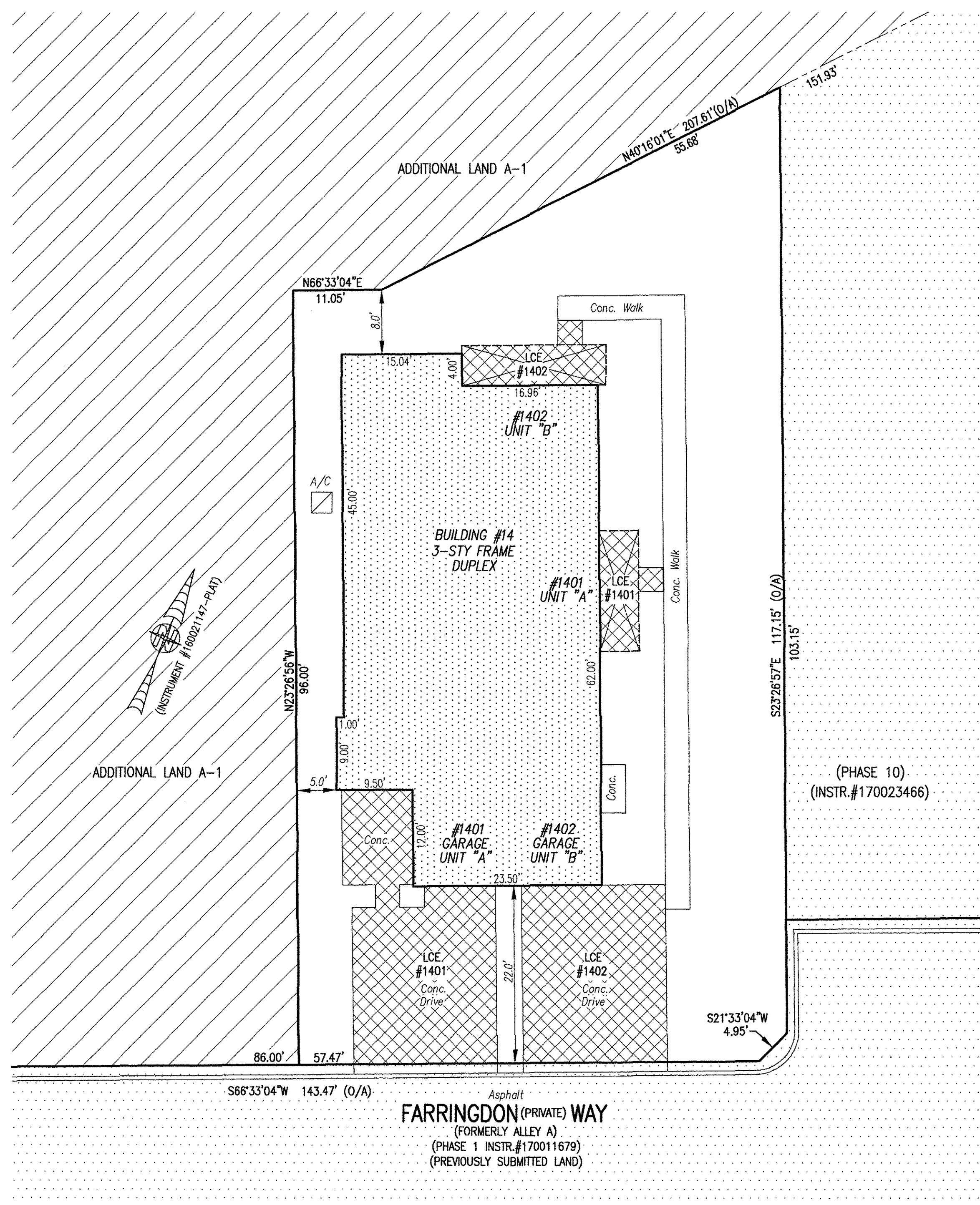
I HEREBY CERTIFY THAT THIS PLAT IS ACCURATE AND THAT IT COMPLIES WITH THE PROVISIONS OF THE CODE OF VIRGINIA OF 1950 AS AMENDED, § 55-79.58 AND I FURTHER CERTIFY THAT ALL IMPROVEMENTS THEREOF DEPICTED HEREON, PURSUANT TO THE CODE OF VIRGINIA § 55-79.58A, ARE SUBSTANTIALLY COMPLETE.



5 Large/Small Plat(s) Recorded
herewith as # 180009579

City of Williamsburg & County of James City
Circuit Court: This PLAT was recorded on
6-6-2018
at 2:34 AM PM PB PG
Document # 180009579
MONA A. FOLEY, CLERK
Mona A. Foley, Clerk

- INDICATES PREVIOUSLY SUBMITTED LAND
- INDICATES BUILDING AREA (SEE PLANS FOR UNIT DIMENSIONS)
- INDICATES LIMITED COMMON ELEMENT (LCE) ASSIGNED TO A UNIT # UNIT ASSIGNED
- INDICATES COMMON ELEMENT (EXCLUDING AREAS OUTSIDE SUBMITTED LAND)
- INDICATES ADDITIONAL LAND



(PHASE 10)
(INSTR.#170023466)

JCC Subdivision Agent *EBC*
Approval Not Required

THIS SHEET: BUILDING DETAIL

PHASE 14
CONDOMINIUM PLAT AND PLAN
OF
THE PROMENADE
AT
JOHN TYLER
A CONDOMINIUM
JAMES CITY COUNTY, VIRGINIA

Jo# 160921
Hayden Frye and Associates, Inc.
Land Surveyors
333 KELLAM ROAD, SUITE 200
VIRGINIA BEACH, VA, 23462
PH: (757) 491-7228 FX: (757) 491-7229
DATE: MAY 21, 2018
SCALE: 1"=10'
SHEET 3 OF 5 THIS PHASE

