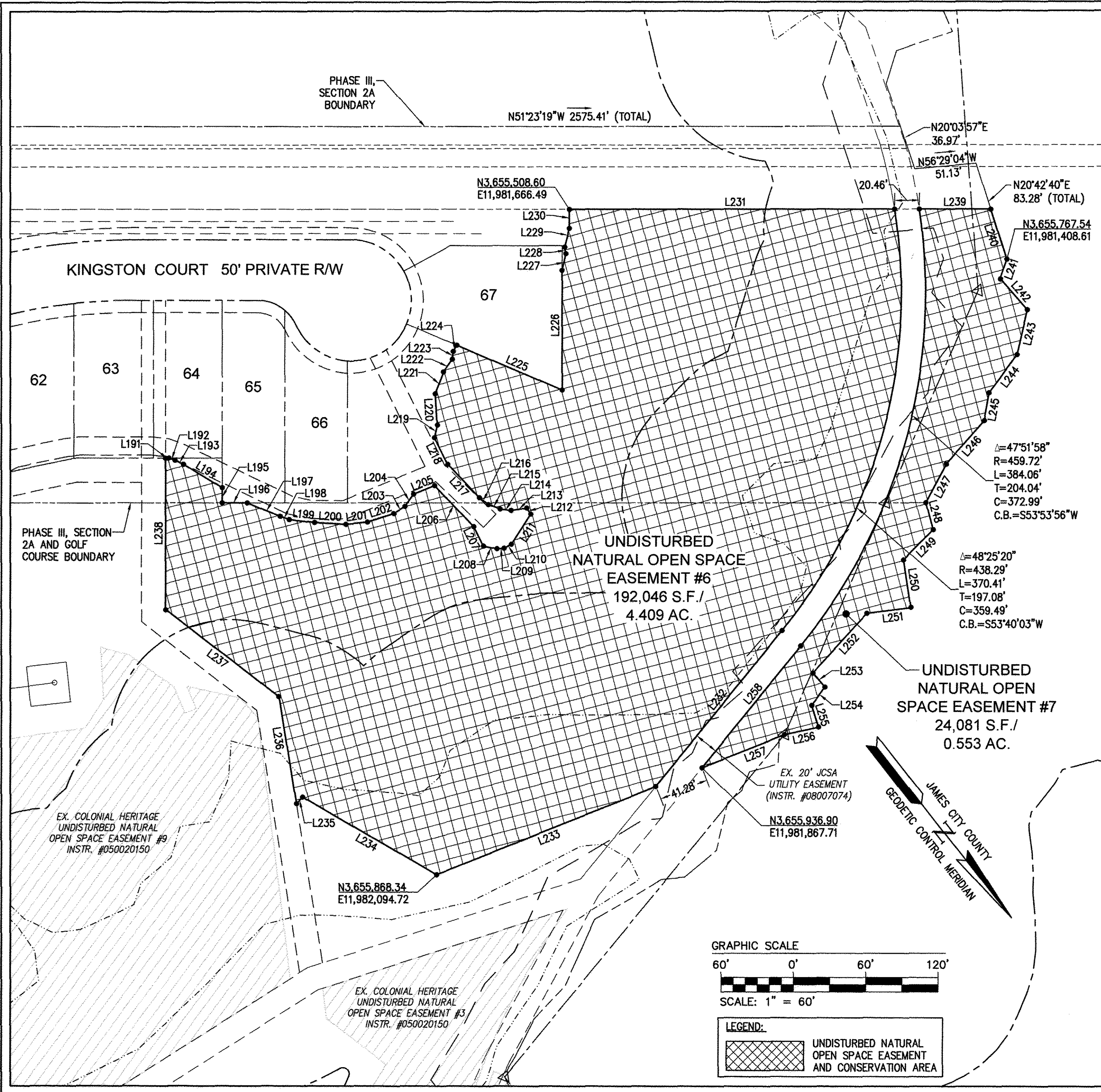


180008340

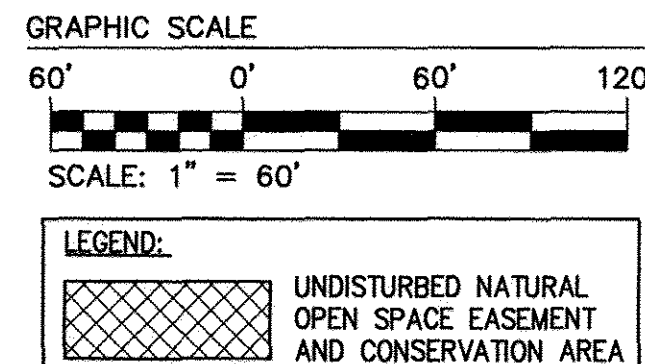


UNDISTURBED NATURAL OPEN SPACE EASEMENT #7

LINE TABLE			LINE TABLE		
LINE	BEARING	LENGTH	LINE	BEARING	LENGTH
L239	N51°23'19"W	59.37'	L249	N83°27'21"E	35.09'
L240	N20°42'40"E	43.53'	L250	N29°35'15"E	39.61'
L241	N57°43'40"E	17.01'	L251	S59°06'38"E	36.95'
L242	N2°55'15"W	33.92'	L252	N80°57'37"E	66.24'
L243	N51°25'06"E	38.03'	L253	N1°46'33"W	15.47'
L244	N75°20'09"E	39.16'	L254	N75°11'28"E	18.55'
L245	N48°23'46"E	23.23'	L255	N20°48'44"E	18.86'
L246	N79°59'41"E	47.84'	L256	S63°42'33"E	28.89'
L247	N66°29'48"E	35.96'	L257	S73°11'45"E	73.81'
L248	N23°21'02"E	22.98'	L258	S77°49'23"W	129.65'

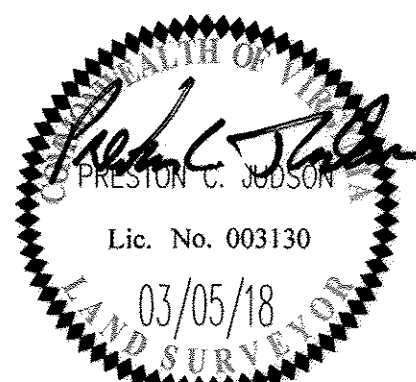
UNDISTURBED NATURAL OPEN SPACE EASEMENT #6

LINE TABLE			LINE TABLE		
LINE	BEARING	LENGTH	LINE	BEARING	LENGTH
L191	N51°23'19"W	2.74'	L215	S29°52'05"E	10.50'
L192	N32°19'57"W	5.48'	L216	S14°32'18"E	9.38'
L193	N25°58'56"W	7.80'	L217	S5°10'45"E	37.84'
L194	N20°19'05"W	37.40'	L218	S11°49'30"W	24.84'
L195	N38°36'41"E	12.48'	L219	S51°27'57"W	10.68'
L196	N51°23'19"W	20.83'	L220	S34°51'13"W	25.74'
L197	N29°13'04"W	29.33'	L221	S59°34'22"W	19.43'
L198	N31°52'55"W	8.00'	L222	S74°11'47"W	12.57'
L199	N44°35'41"W	21.22'	L223	S44°58'41"W	6.55'
L200	N48°18'46"W	26.03'	L224	S68°49'25"W	5.87'
L201	N57°08'50"W	17.99'	L225	N28°31'05"W	94.85'
L202	N69°16'36"W	23.12'	L226	S38°36'41"W	98.53'
L203	N83°13'43"W	11.00'	L227	S50°57'07"W	14.23'
L204	S73°36'41"W	12.38'	L228	S28°34'52"W	5.43'
L205	N73°32'45"W	18.76'	L229	S52°48'12"W	16.08'
L206	N5°10'45"W	46.84'	L230	S38°36'41"W	15.54'
L207	N11°28'30"E	17.99'	L231	N51°23'19"W	269.89'
L208	N39°53'52"W	11.46'	L232	N77°49'23"E	165.75'
L209	N55°23'38"W	5.88'	L233	S73°11'45"E	195.86'
L210	N79°58'30"W	6.97'	L234	S21°31'53"E	128.58'
L211	S71°05'47"W	29.58'	L235	N81°27'34"E	7.31'
L212	S6°57'55"W	5.83'	L236	S29°12'24"W	89.22'
L213	S60°06'26"E	13.25'	L237	S14°05'29"E	118.19'
L214	S44°40'44"E	9.14'	L238	S38°36'41"W	125.05'



City of Williamsburg & County of James City
 Circuit Court: This PLAT was recorded on
 May 8 2018
 at 3:04 AM/PM, PG
 Document # 180008340
 MONA A. FOLEY, CLERK
 Clerk

Large/Small Plat(s) Recorded
 herewith as # 180008340



5248 Olde Towne Road, Suite 1
 Williamsburg, Virginia 23188
 Phone: (757) 253-0040
 Fax: (757) 220-8994
 www.aesva.com

PLAT OF SUBDIVISION
 LOTS 1 THRU 67, COS #1A, #1B, #1C, #1D, #1E, #1F
 AND COS #2
**COLONIAL HERITAGE
 PHASE III - SECTION 2A**
 OWNER / DEVELOPER: COLONIAL HERITAGE, LLC
 STONEHOUSE DISTRICT JAMES CITY COUNTY VIRGINIA

Project Contacts: PCJ/TRS
 Project Number: 8881-32A
 Scale: 1"=60' Date: 10/23/17
 Sheet Number
10 of 11

S:\2018\180008340 Phase III Section 2A\Phase III Section 2A\881-32D Pt. III.2A.dwg, 4/18/2018 5:58:59 AM, csw.svs