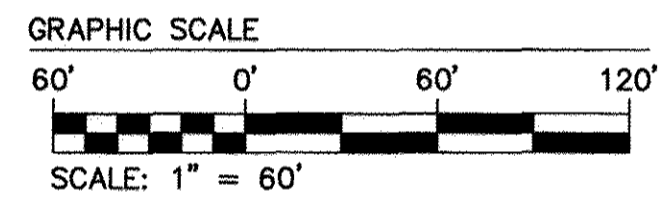
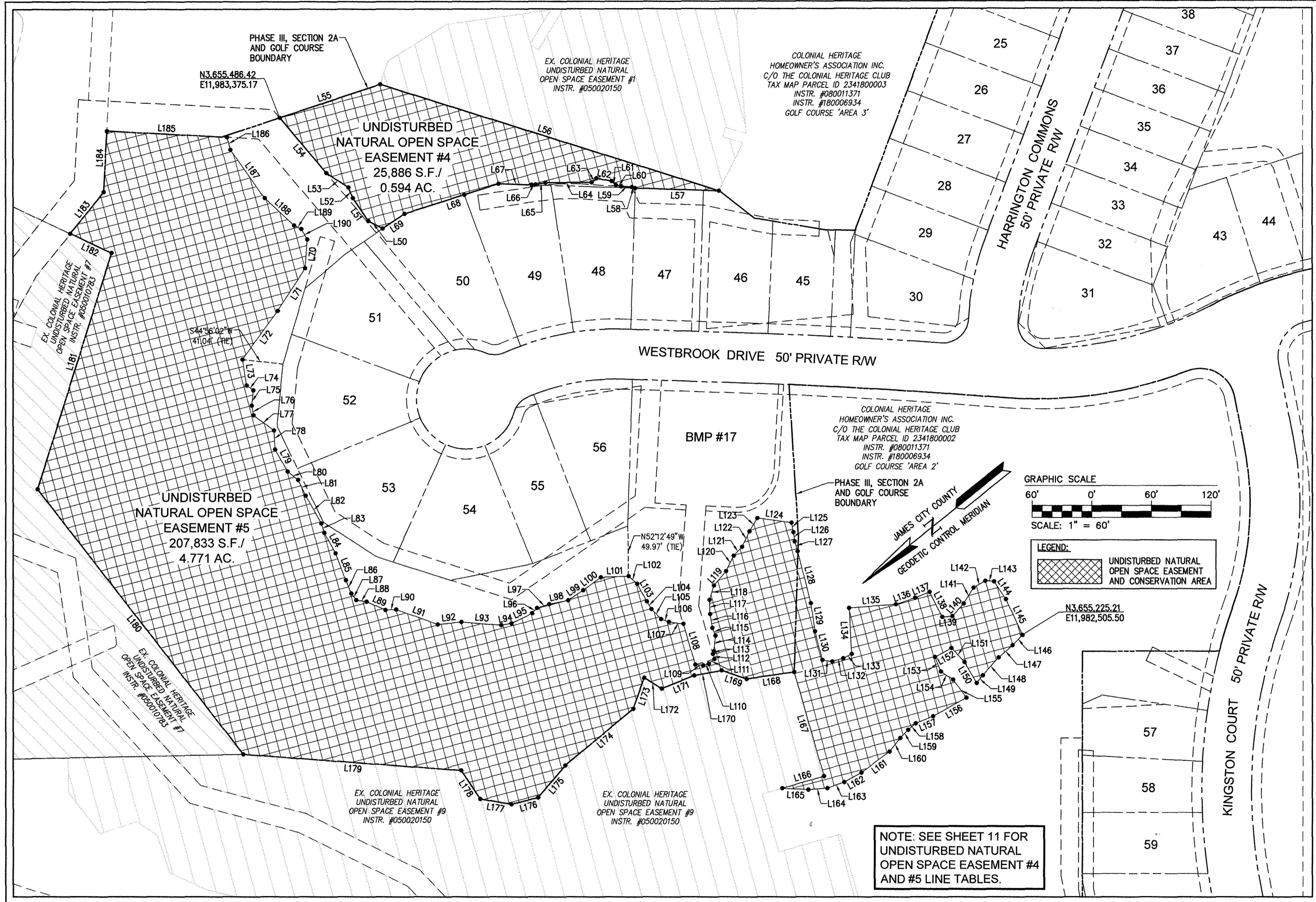


180008340

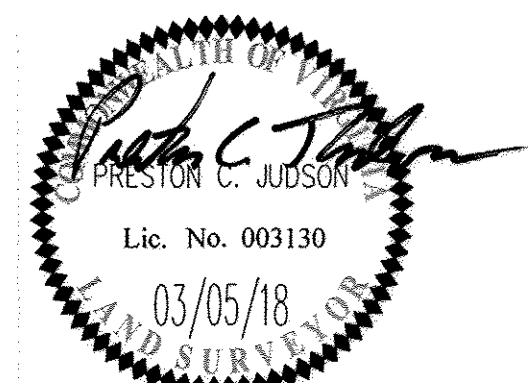


LEGEND:
 UNDISTURBED NATURAL OPEN SPACE EASEMENT AND CONSERVATION AREA

NOTE: SEE SHEET 11 FOR UNDISTURBED NATURAL OPEN SPACE EASEMENT #4 AND #5 LINE TABLES.

City of Williamsburg & County of James City
 Circuit Court: This PLAT was recorded on
 May 8 2018
 at 3:04 AM/PM, PB PG
 Document # 180008340
 MONA A. FOLEY, CLERK
 Clerk

Large/Small Plat(s) Recorded
 herewith as # 180008340



AES
 CONSULTING ENGINEERS
 5248 Olde Towne Road, Suite 1
 Williamsburg, Virginia 23188
 Phone: (757) 253-0040
 Fax: (757) 220-8994
 www.aesva.com

PLAT OF SUBDIVISION
 LOTS 1 THRU 67, COS #1A, #1B, #1C, #1D, #1E, #1F
 AND COS #2
COLONIAL HERITAGE
 PHASE III - SECTION 2A
 OWNER / DEVELOPER: COLONIAL HERITAGE, LLC
 STONEHOUSE DISTRICT JAMES CITY COUNTY VIRGINIA

Project Contacts: PCJ/TRS
 Project Number: 8881-32A
 Scale: 1"=60'
 Date: 10/23/17
 Sheet Number
9 of 11

S:\00000000\180008340\Phase III - Section 2A\Map\Phase III - Section 2A\Map\180008340.dwg, 4/12/2018 8:53:06 AM, user: rps