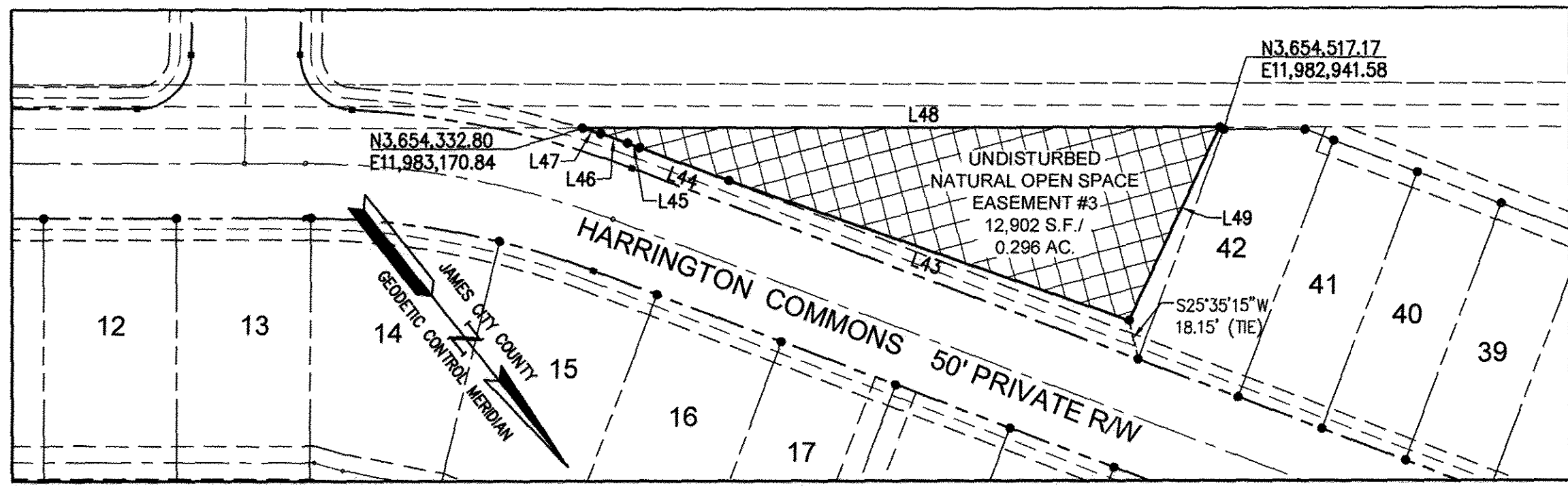
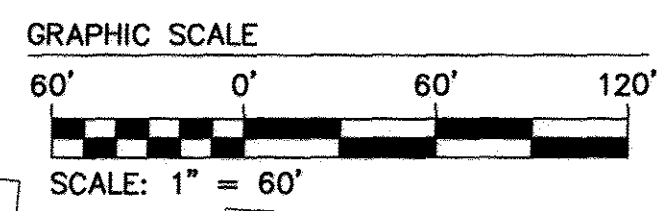
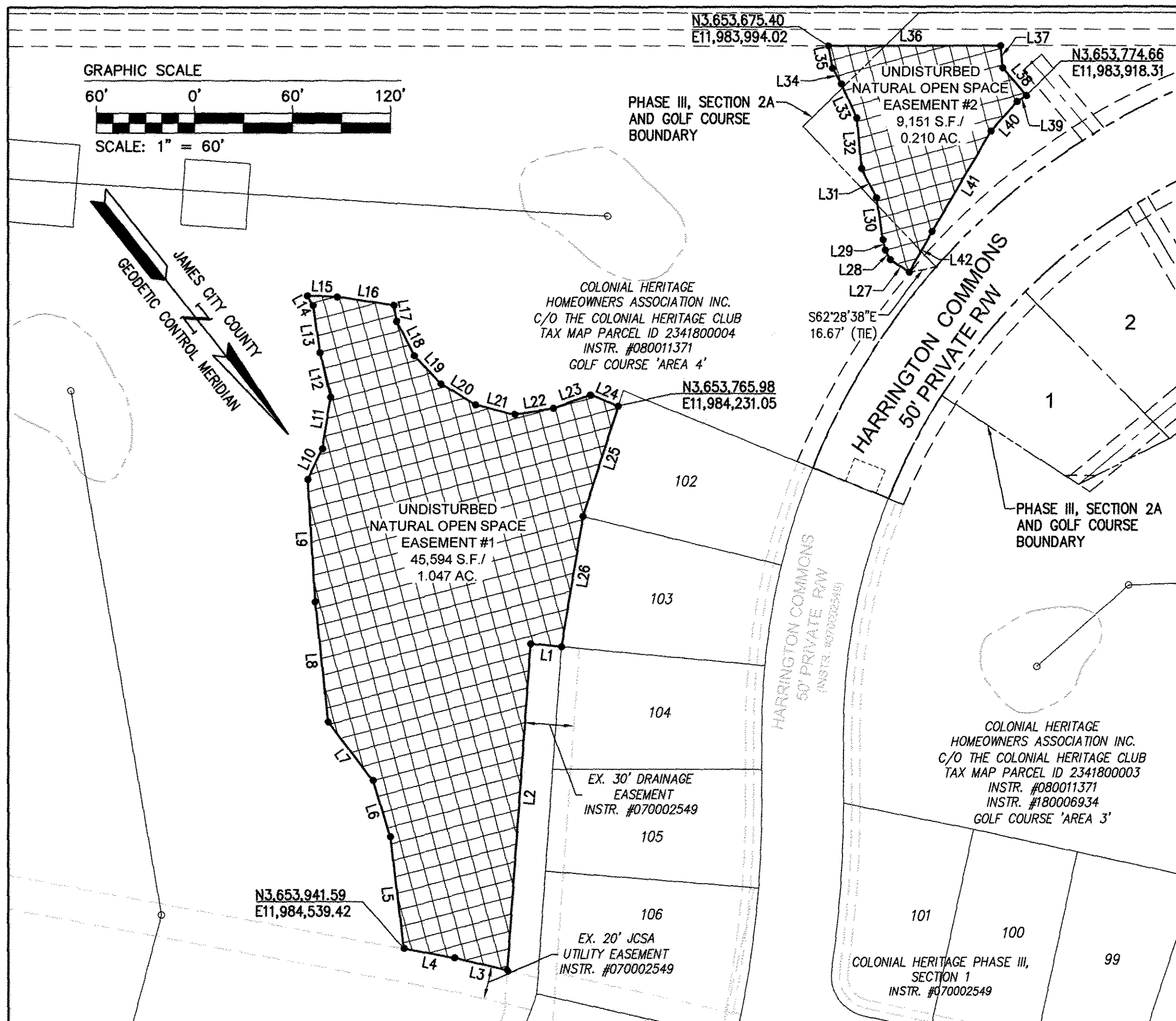


180008340



SCALE: 1"=60'



UNDISTURBED NATURAL OPEN SPACE EASEMENT #3

LINE TABLE		
LINE	BEARING	LENGTH
L43	S32°09'25"E	194.48'
L44	S31°11'22"E	43.57'
L45	S30°24'20"E	6.00'
L46	S32°33'24"E	13.03'
L47	S34°02'05"E	8.59'
L48	N51°23'19"W	292.37'
L49	N63°58'36"E	97.41'

UNDISTURBED NATURAL OPEN SPACE EASEMENT #2

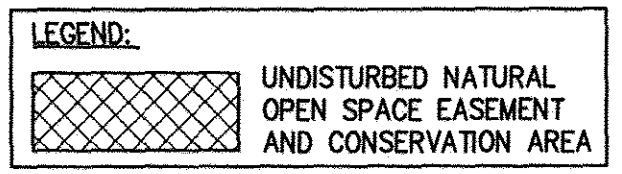
LINE TABLE		
LINE	BEARING	LENGTH
L27	S17°16'37"E	13.85'
L28	S10°21'30"W	6.58'
L29	S24°54'43"W	6.55'
L30	S30°02'35"W	25.58'
L31	S11°39'46"W	20.12'
L32	S33°19'40"W	30.79'
L33	S14°08'30"W	22.87'
L34	S9°07'15"W	10.84'
L35	S27°51'50"W	13.83'
L36	N51°23'19"W	105.23'
L37	N32°46'50"E	13.55'
L38	N2°05'57"W	22.22'
L39	S84°03'01"E	6.90'
L40	N80°19'30"E	24.00'
L41	N69°11'00"E	70.76'
L42	N68°08'50"E	28.49'

UNDISTURBED NATURAL OPEN SPACE EASEMENT #1

LINE TABLE		
LINE	BEARING	LENGTH
L1	S46°02'57"E	19.00'
L2	N42°43'31"E	198.97'
L3	S38°23'47"E	33.07'
L4	S40°56'41"E	31.58'
L5	S31°38'38"W	68.56'
L6	S21°19'41"W	35.62'
L7	S1°01'58"W	44.93'
L8	S32°26'54"W	73.57'
L9	S35°07'24"W	74.58'
L10	S64°19'55"W	20.59'
L11	S47°44'15"W	31.83'
L12	S25°14'57"W	27.61'
L13	S30°00'52"W	29.25'

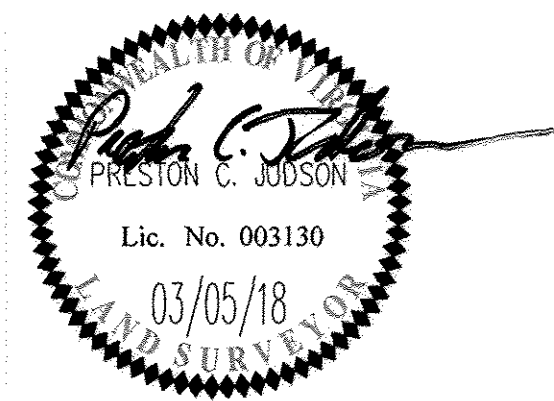
UNDISTURBED NATURAL OPEN SPACE EASEMENT #1

LINE TABLE		
LINE	BEARING	LENGTH
L14	S9°17'55"W	6.79'
L15	N49°06'01"W	18.33'
L16	N43°06'16"W	34.88'
L17	N29°01'52"E	9.96'
L18	N11°09'50"E	23.68'
L19	N5°02'25"W	23.61'
L20	N20°22'40"W	24.65'
L21	N37°24'12"W	24.74'
L22	N60°26'17"W	24.01'
L23	N71°26'19"W	23.88'
L24	N29°34'54"W	18.55'
L25	N56°30'16"E	70.36'
L26	N48°08'07"E	80.27'



City of Williamsburg & County of James City
 Circuit Court: This PLAT was recorded on
 May 8 2018
 at 3:04 AM/PM, PB PG
 Document # 180008340
 MONA A. FOLEY, CLERK
 Clerk

Large/Small Plat(s) Recorded
 herewith as #180008340



AES
 CONSULTING ENGINEERS
 5248 Olde Towne Road, Suite 1
 Williamsburg, Virginia 23188
 Phone: (757) 253-0040
 Fax: (757) 220-8994
 www.aesva.com

PLAT OF SUBDIVISION
 LOTS 1 THRU 67, COS #1A, #1B, #1C, #1D, #1E, #1F
 AND COS #2
COLONIAL HERITAGE
 PHASE III - SECTION 2A
 OWNER / DEVELOPER: COLONIAL HERITAGE, LLC
 STONEHOUSE DISTRICT JAMES CITY COUNTY VIRGINIA

Project Contacts: PCJ/TRS
 Project Number: 8881-32A
 Scale: 1"=60' Date: 10/23/17
 Sheet Number
8 of 11

S:\08888132-C Phase II Sec 2\Survey\Phase III\Phase III - Section 2A\0881-322-Plat III 2A.dwg, 4/16/2018 8:51:39 AM, user:spc