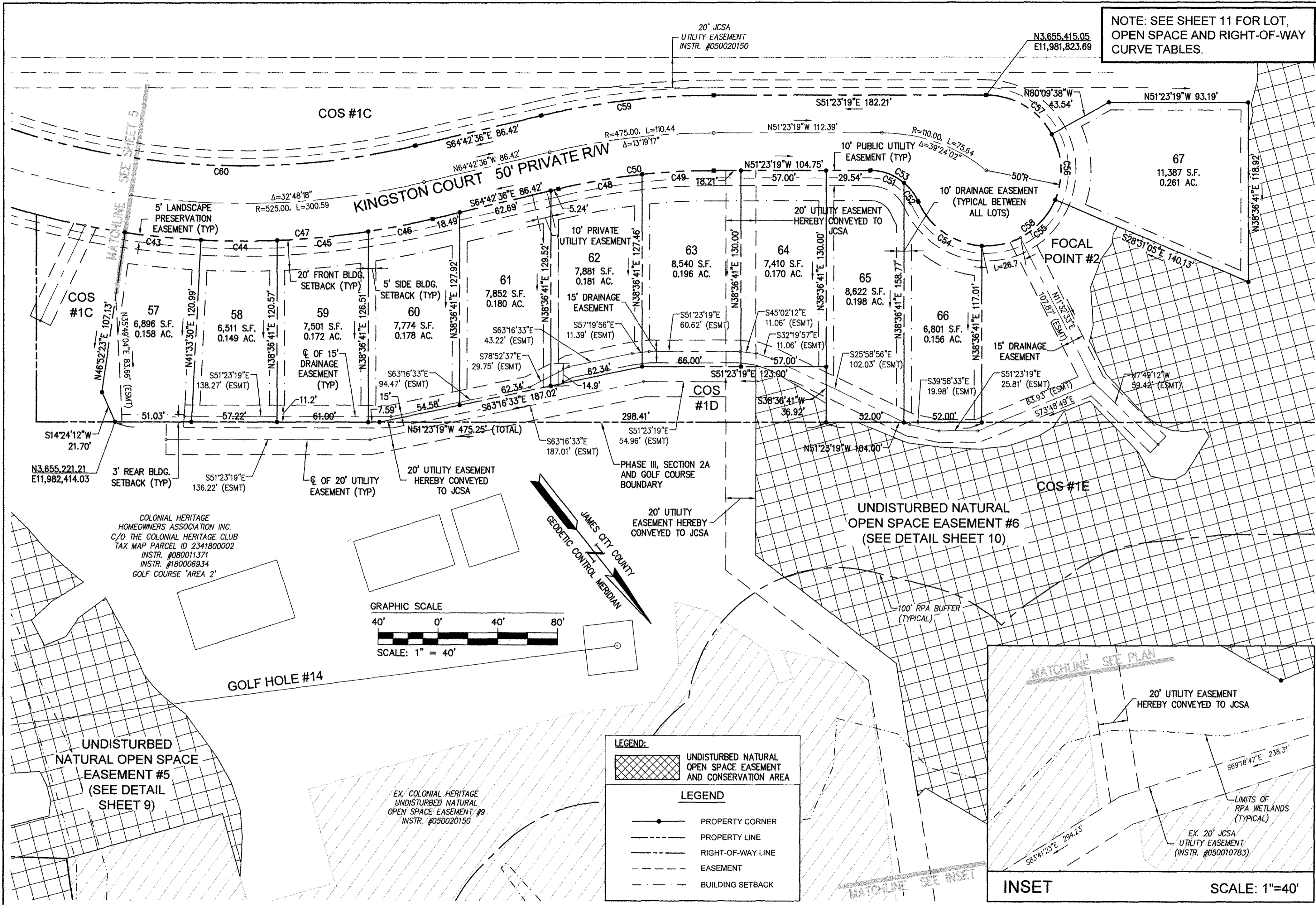
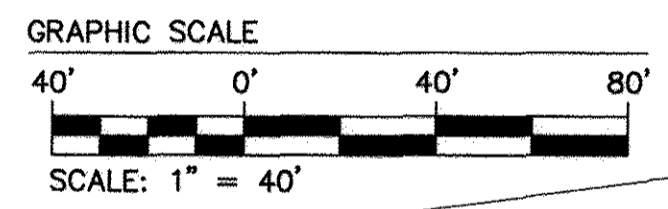


180008340

NOTE: SEE SHEET 11 FOR LOT, OPEN SPACE AND RIGHT-OF-WAY CURVE TABLES.

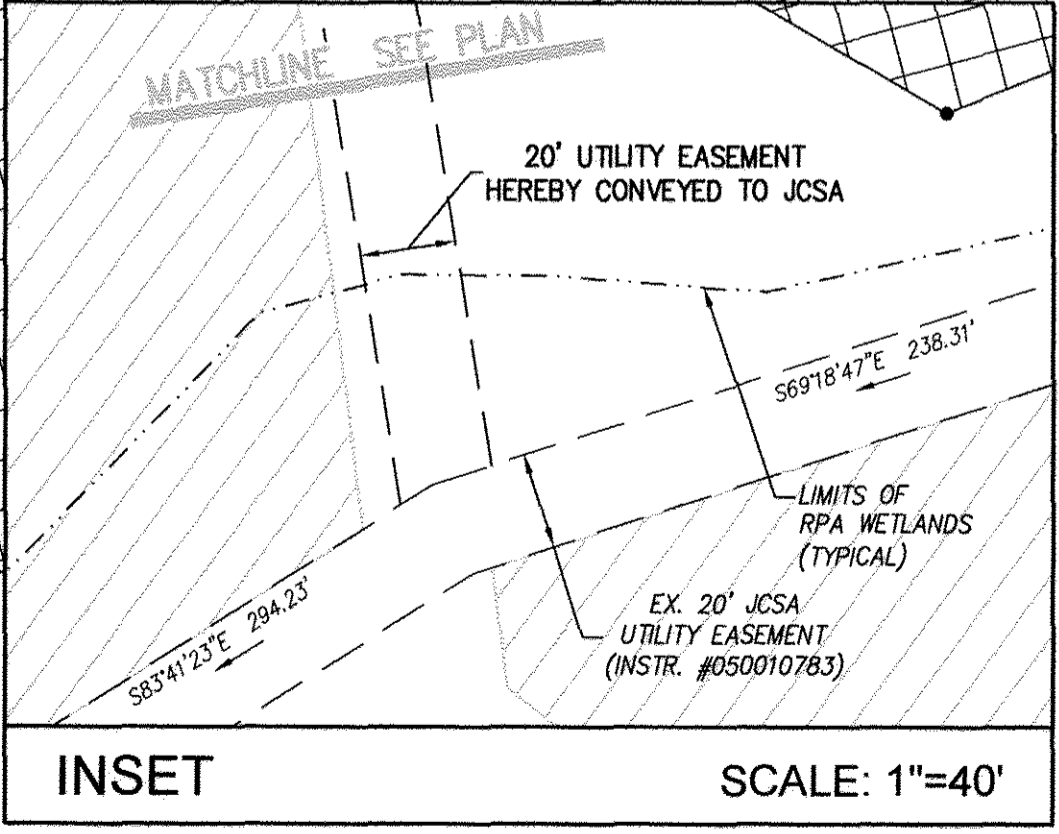


COLONIAL HERITAGE HOMEOWNERS ASSOCIATION INC.
 C/O THE COLONIAL HERITAGE CLUB
 TAX MAP PARCEL ID 2341800002
 INSTR. #080011371
 INSTR. #180006934
 GOLF COURSE 'AREA 2'



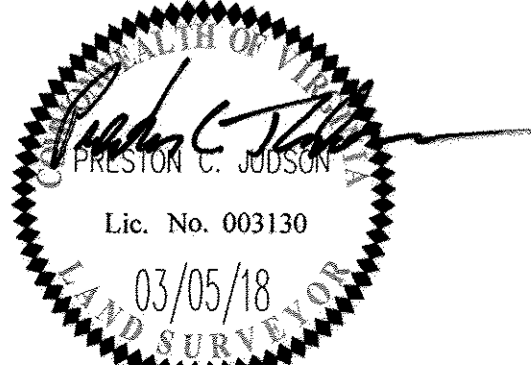
LEGEND:

- UNDISTURBED NATURAL OPEN SPACE EASEMENT AND CONSERVATION AREA
- PROPERTY CORNER
- PROPERTY LINE
- RIGHT-OF-WAY LINE
- EASEMENT
- BUILDING SETBACK



City of Williamsburg & County of James City
 Circuit Court: This PLAT was recorded on
 May 8 2018
 at 3:04 AM/PM, PB PG
 Document # 180008340
 MONA A. FOLEY, CLERK
 Clerk

Large/Small Plat(s) Recorded
 herewith as # 180008340



AES
 CONSULTING ENGINEERS
 Hampton Roads | Central Virginia | Middle Peninsula
 5248 Olde Towne Road, Suite 1
 Williamsburg, Virginia 23188
 Phone: (757) 253-0040
 Fax: (757) 220-8994
 www.aesva.com

PLAT OF SUBDIVISION
 LOTS 1 THRU 67, COS #1A, #1B, #1C, #1D, #1E, #1F
 AND COS #2
COLONIAL HERITAGE
 PHASE III - SECTION 2A
 OWNER / DEVELOPER: COLONIAL HERITAGE, LLC
 STONEHOUSE DISTRICT JAMES CITY COUNTY VIRGINIA

Project Contacts: PCJ/TRS
 Project Number: 8881-32A
 Scale: 1"=40' Date: 10/23/17
 Sheet Number
7 of 11