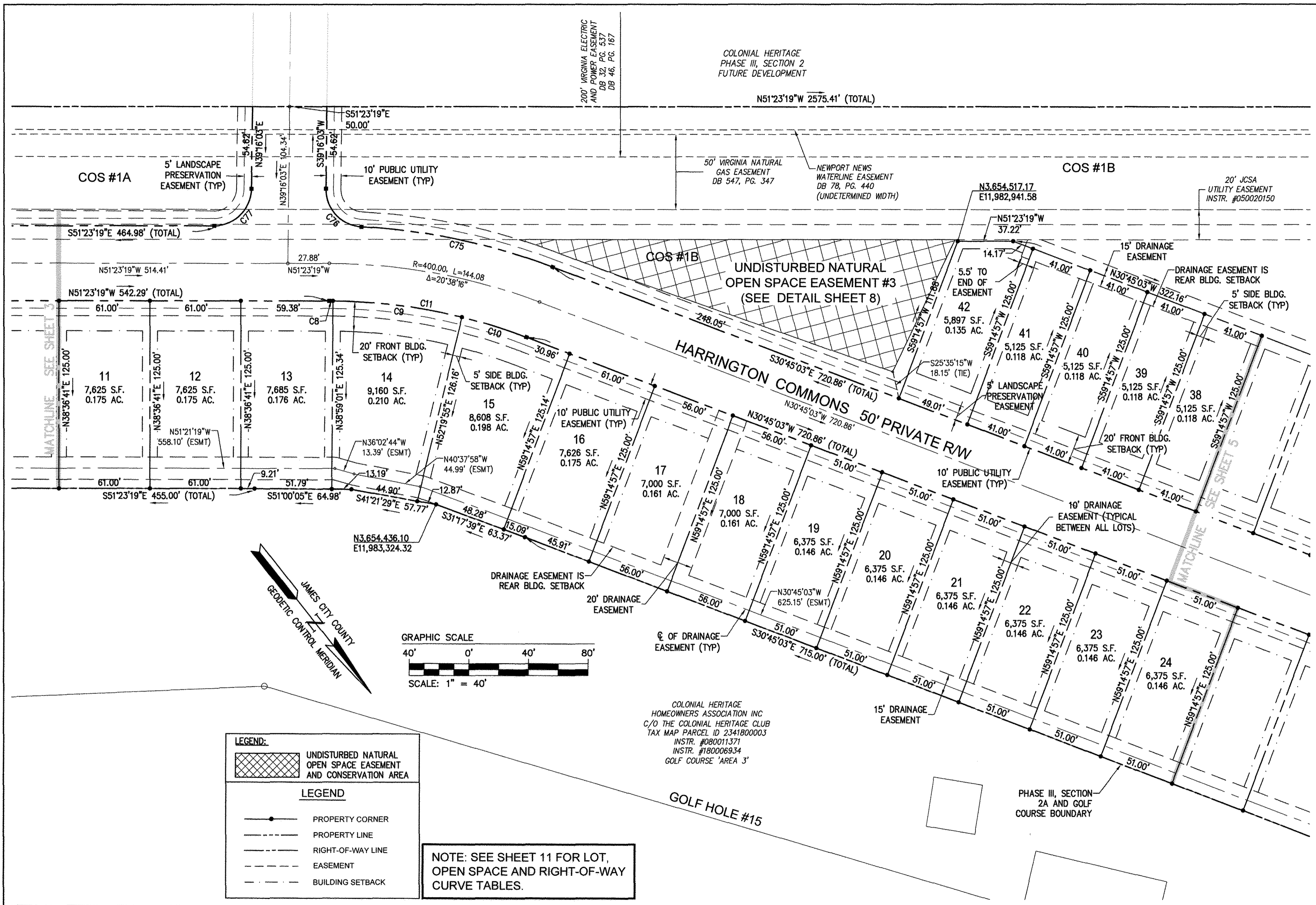


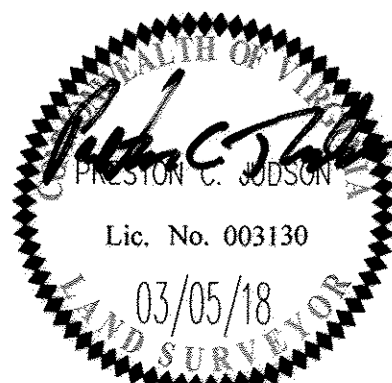
180008340



**LEGEND:**

- UNDISTURBED NATURAL OPEN SPACE EASEMENT AND CONSERVATION AREA
- LEGEND**
- PROPERTY CORNER
- PROPERTY LINE
- RIGHT-OF-WAY LINE
- EASEMENT
- BUILDING SETBACK

**NOTE: SEE SHEET 11 FOR LOT, OPEN SPACE AND RIGHT-OF-WAY CURVE TABLES.**



**AES**  
CONSULTING ENGINEERS  
5248 Olde Towne Road, Suite 1  
Williamsburg, Virginia 23188  
Phone: (757) 253-0040  
Fax: (757) 220-8994  
www.aesva.com

PLAT OF SUBDIVISION  
LOTS 1 THRU 67, COS #1A, #1B, #1C, #1D, #1E, #1F  
AND COS #2  
**COLONIAL HERITAGE**  
**PHASE III - SECTION 2A**  
OWNER / DEVELOPER: COLONIAL HERITAGE, LLC  
STONEHOUSE DISTRICT JAMES CITY COUNTY VIRGINIA

Project Contacts: PCJ/TRS  
Project Number: 8881-32A  
Scale: 1"=40'  
Date: 10/23/17  
Sheet Number  
**4 of 11**

City of Williamsburg & County of James City  
Circuit Court: This PLAT was recorded on  
May 8 2018  
at 3:04 AM/PM, PB PG  
Document # 180008340  
MONA A. FOLEY, CLERK  
*Monica Foley* Clerk

11 Large/Small Plat(s) Recorded  
herewith as # 180008340