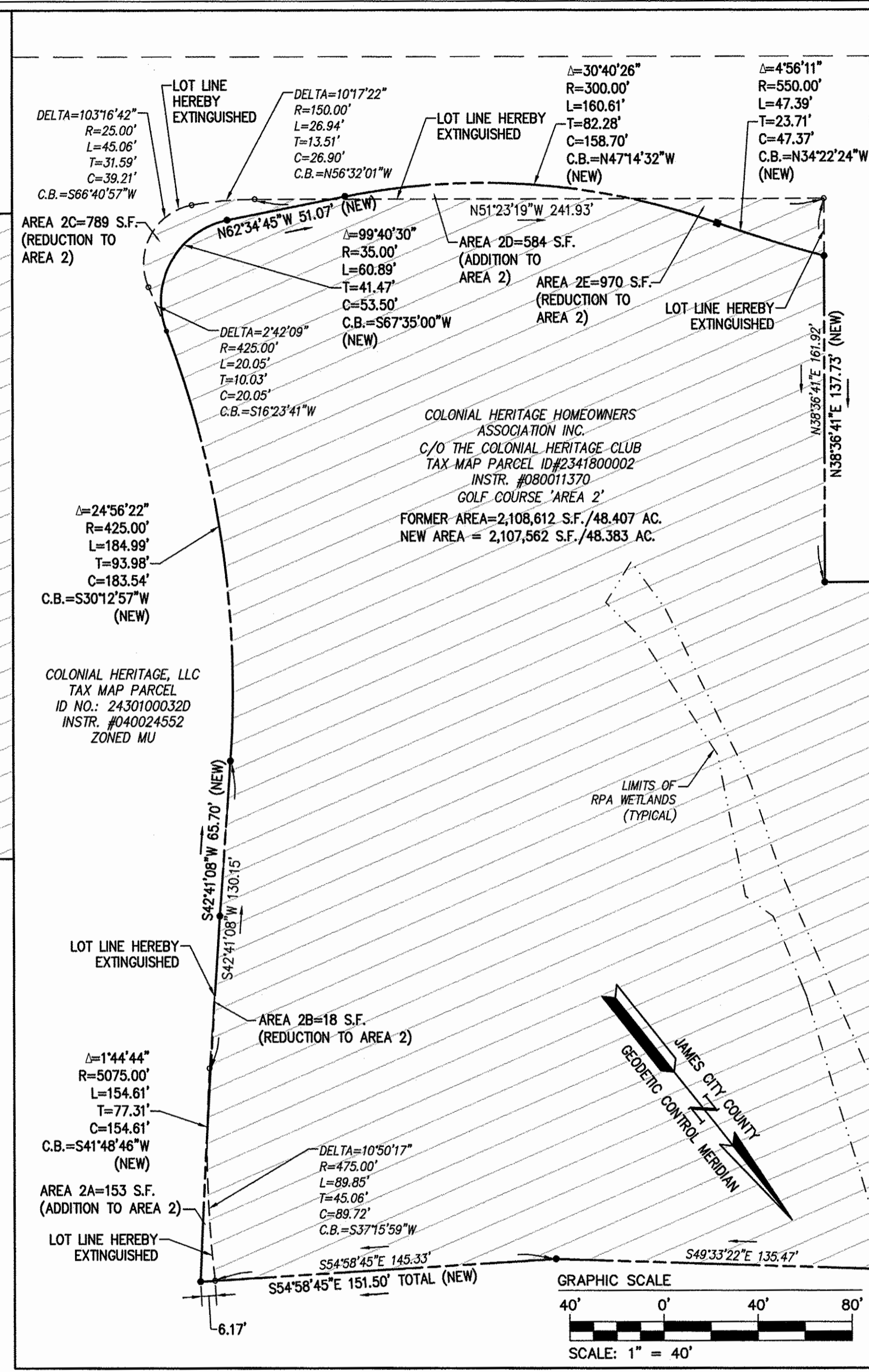


INSET #1



INSET #2

TAX MAP PARCEL ID NO.: 2341800002  
 GOLF COURSE 'AREA 2', OWNED BY:  
 COLONIAL HERITAGE HOMEOWNERS' ASSOCIATION

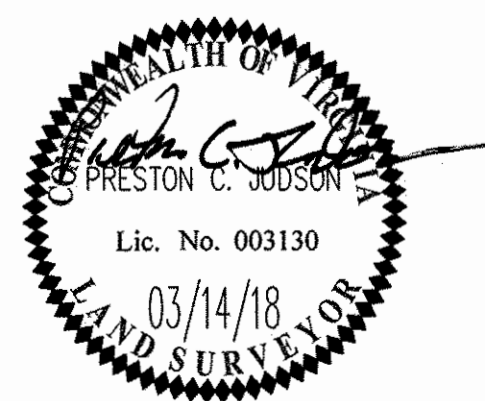
AREA ADDED TO GOLF COURSE=737 S.F. (2A & 2D)  
 AREA SUBTRACTED FROM GOLF COURSE=1,777 S.F. (2B, 2C & 2E)  
 NET AREA SUBTRACTED FROM GOLF COURSE 'AREA 2'=1,040 S.F.

TAX MAP PARCEL ID NO.: 2341800003  
 GOLF COURSE 'AREA 3', OWNED BY:  
 COLONIAL HERITAGE HOMEOWNERS' ASSOCIATION I

AREA ADDED TO GOLF COURSE=2 S.F. (3B)  
 AREA SUBTRACTED FROM GOLF COURSE=7,404 S.F. (3A, 3C, 3D & 3E)  
 NET AREA SUBTRACTED FROM GOLF COURSE 'AREA 3'=7,402 S.F.

3 Large/Small Plat(s) Recorded  
 herewith as # 180006934

City of Williamsburg & County of James City Circuit Court: This PLAT was recorded on <i>April 13, 2018</i>		
at 10:07 AM/PM, PG		
Document # 180006934		
MONA A. FOLEY, CLERK		
<i>Mona A. Foley</i> , Clerk		
1	03/14/18	TR
Rev.	Date	Revised By



**AES**  
 CONSULTING ENGINEERS  
 5248 Olde Towne Road, Suite 1  
 Williamsburg, Virginia 23168  
 Phone: (757) 253-0040  
 Fax: (757) 220-8994  
 www.aesva.com

PLAT OF BOUNDARY LINE ADJUSTMENT AND  
 LOT LINE EXTINGUISHMENT  
**COLONIAL HERITAGE  
 PHASE III - SECTION 2**  
 OWNER / DEVELOPER: COLONIAL HERITAGE, LLC  
 STONEHOUSE DISTRICT      JAMES CITY COUNTY      VIRGINIA

Project Contacts:	PCJ/TRS
Project Number:	8881-32
Scale:	Date:
NOTED	02/23/18
Sheet Number	
<b>3 of 3</b>	

S:\00000000\1320 Phase III Section 2\Main\Plat\Phase III - Section 2\MAR18 1:20 B.A. Plat.dwg, 3/20/2018 8:24:42 AM, rmas.svs