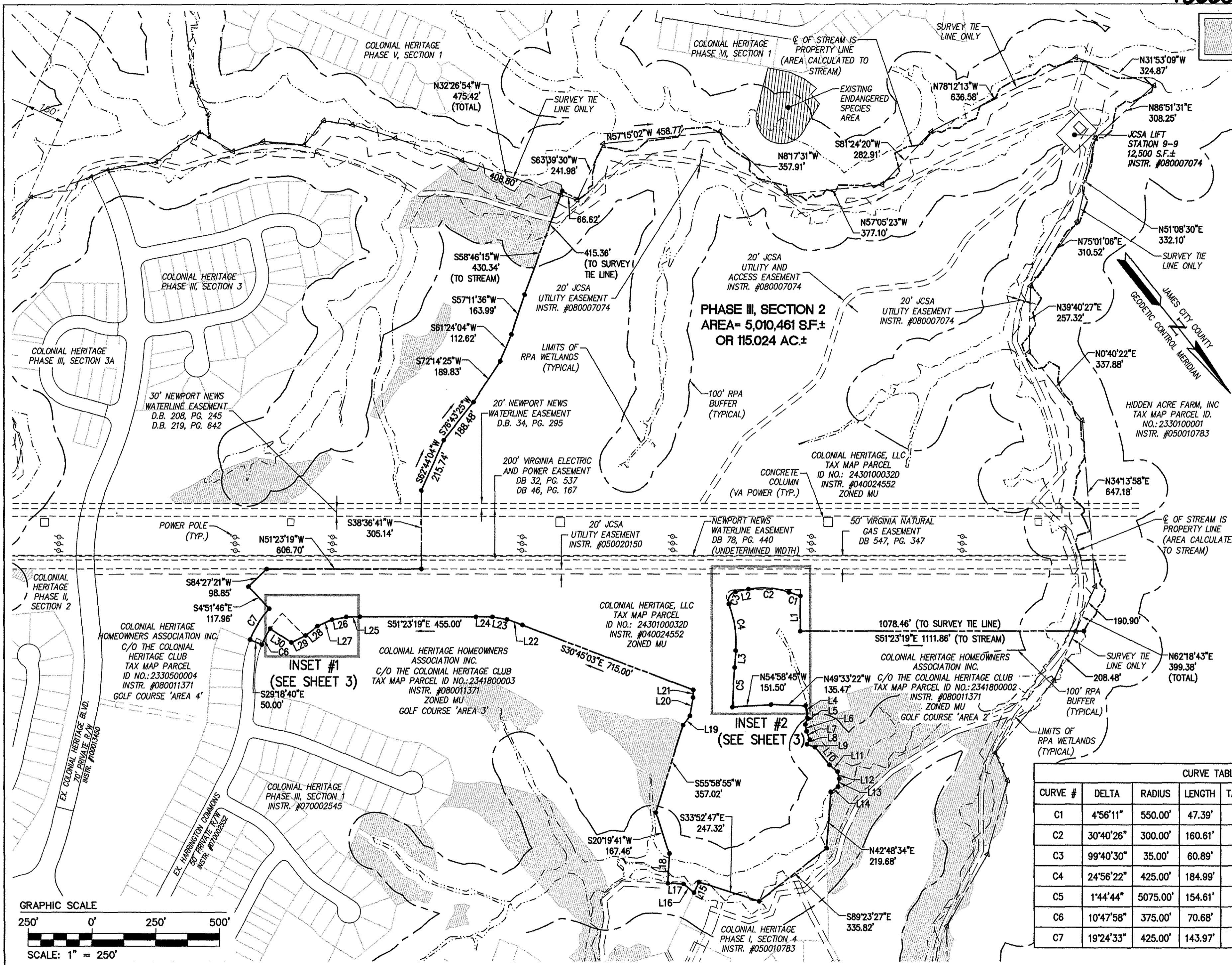


INDICATES EXISTING NATURAL OPEN SPACE PREVIOUSLY DEDICATED TO JAMES CITY COUNTY

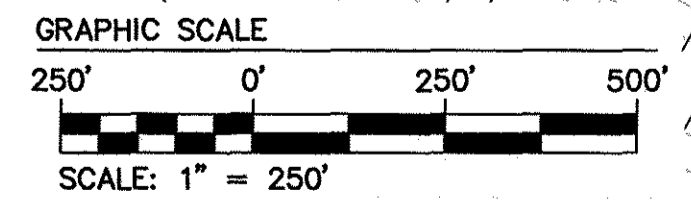


BOUNDARY LINE TABLE

LINE	BEARING	LENGTH
L1	S38°36'41"W	137.73'
L2	S62°34'45"E	51.07'
L3	N42°41'08"E	65.70'
L4	N30°15'13"E	48.31'
L5	N57°11'07"E	26.58'
L6	N28°16'36"E	27.94'
L7	N16°49'39"E	35.24'
L8	N70°11'33"E	20.71'
L9	N31°54'42"W	32.72'
L10	N0°59'11"W	88.67'
L11	N11°07'54"W	42.24'
L12	N24°49'48"E	27.92'
L13	N48°30'34"E	31.62'
L14	S85°38'05"E	34.35'
L15	N63°35'53"E	45.73'
L16	S12°26'48"E	53.55'
L17	S48°27'03"E	60.93'
L18	S41°32'57"W	116.08'
L19	S76°04'16"W	45.04'
L20	S47°57'12"W	72.71'
L21	S39°32'44"W	29.52'
L22	S31°17'39"E	63.37'
L23	S41°21'29"E	57.77'
L24	S51°00'05"E	64.98'
L25	S52°33'32"E	53.08'
L26	S61°58'41"E	56.57'
L27	S74°56'29"E	63.51'
L28	S89°23'18"E	58.17'
L29	S77°56'43"E	62.25'
L30	S18°30'41"E	99.60'

CURVE TABLE

CURVE #	DELTA	RADIUS	LENGTH	TANGENT	CHORD	CHORD BEARING
C1	4°56'11"	550.00'	47.39'	23.71'	47.37'	S34°22'24"E
C2	30°40'26"	300.00'	160.61'	82.28'	158.70'	S47°14'32"E
C3	99°40'30"	35.00'	60.89'	41.47'	53.50'	N67°35'00"E
C4	24°56'22"	425.00'	184.99'	93.98'	183.54'	N30°12'57"E
C5	1°44'44"	5075.00'	154.61'	77.31'	154.61'	N41°48'46"E
C6	10°47'58"	375.00'	70.68'	35.45'	70.58'	N66°05'19"E
C7	19°24'33"	425.00'	143.97'	72.68'	143.28'	S70°23'37"W

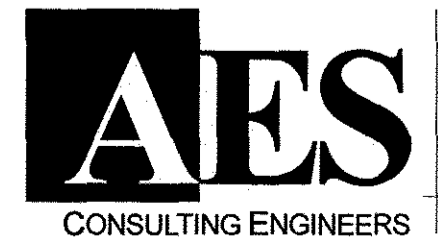
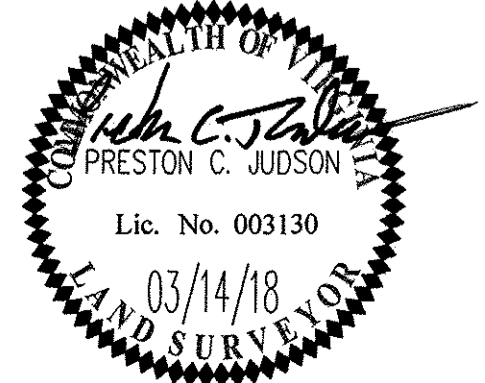


INSET #1 (SEE SHEET 3)

INSET #2 (SEE SHEET 3)

3 Large/Small Plat(s) Recorded herewith as # 180006934

City of Williamsburg & County of James City
 Circuit Court: This PLAT was recorded on April 13, 2018
 at 10:07 AM, PB PG
 Document # 180006934
 MONA A. FOLEY, CLERK



5248 Olde Towne Road, Suite 1
 Williamsburg, Virginia 23188
 Phone: (757) 253-0040
 Fax: (757) 220-8994
 www.aesva.com

PLAT OF BOUNDARY LINE ADJUSTMENT AND LOT LINE EXTINGUISHMENT
COLONIAL HERITAGE PHASE III - SECTION 2
 OWNER / DEVELOPER: COLONIAL HERITAGE, LLC
 STONEHOUSE DISTRICT JAMES CITY COUNTY VIRGINIA

Project Contacts: PCJ/TRS
 Project Number: 8881-32
 Scale: 1"=250' Date: 02/23/18
 Sheet Number
2 of 3

Rev.	Date	REVISED BY
1	03/14/18	