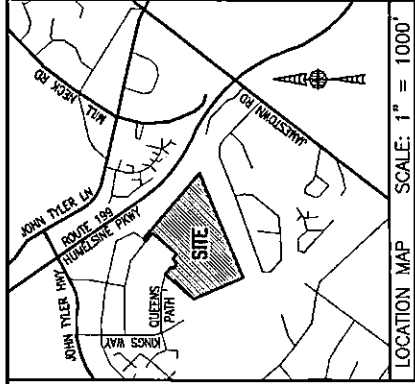
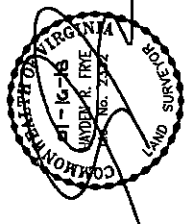


I HEREBY CERTIFY THAT THIS PLAN IS ACCURATE AND THAT IT COMPLIES WITH THE PROVISIONS OF THE CODE OF VIRGINIA OF 1960 AS AMENDED, 55-78.5B AND I FURTHER CERTIFY THAT ALL IMPROVEMENTS THEREON DEPICTED HEREON, PURSUANT TO THE CODE OF VIRGINIA 55-78.5B.A, ARE NOT YET COMPLETED.



PHASE	BLDG#	STATUS/RECORDATION	SQUARE FEET	ACRES	
1	N/A	INSTR. #10011679	289,468	6.183	
10	10	INSTR. #10023465	25,006	0.592	
23	23	NOT YET RECORDED	5,014	0.115	
24	24	SUBSTANTIALLY COMPLETE	4,464	0.102	
26	26	INSTR. #10021155	4,465	0.102	
27	27	INSTR. #10021157	4,944	0.114	
29	29	NOT YET RECORDED	10,569	0.243	
REMAINS OF ADDITIONAL LAND A-1				73,679	1.687
ADDITIONAL LAND A-2				41,237	0.947
REMAINS OF ADDITIONAL LAND A-3				9,402	0.216
ADDITIONAL LAND A-4				43,659	1.003
ADDITIONAL LAND A-5				48,588	1.115
ADDITIONAL LAND A-6				23,722	0.531
ADDITIONAL LAND A-7				232,972	5.307
TOTAL: NEW PARCEL 29				816,629	18.747

LEGAL DESCRIPTION

PROPERTY SHOWN HEREON BEING "NEW PARCEL 29" CONTAINING 18.747 ACRES AS SHOWN ON "PLAN OF LOT LINE EXTINGUISHMENT BEING PREPARED BY AES CONSULTING ENGINEERS, DATED 10-24-16 AND RECORDED AS INSTRUMENT NO. 180021147.

NOTES:

1. PHASE 24: BUILDING 24 IS SUBSTANTIALLY COMPLETE.
2. EASEMENTS AND BUILDING LINES SHOWN HEREON PER THE FOLLOWING:
 - ALTA SURVEY BY AES CONSULTING ENGINEERS, DATED 3-23-15
 - PLAN BY AES CONSULTING ENGINEERS, DATED 10-24-16, INST. #180021147
 - PLAN OF DEVELOPMENT BY AES CONSULTING ENGINEERS, DATED 9-8-16

SHEET INDEX:

- SHEET 1 OF 5: OVERALL SITE LAYOUT AND AREAS
- SHEET 2 OF 5: PROPERTY DATA, EASEMENTS, CURVE AND LINE TABLE
- SHEET 3 OF 5: BUILDING DETAIL
- SHEET 4 OF 5: FOUNDATION PLAN AND SECTION
- SHEET 5 OF 5: FLOOR PLANS

THIS SHEET: OVERALL SITE LAYOUT AND AREAS

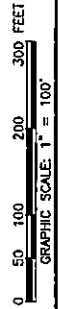
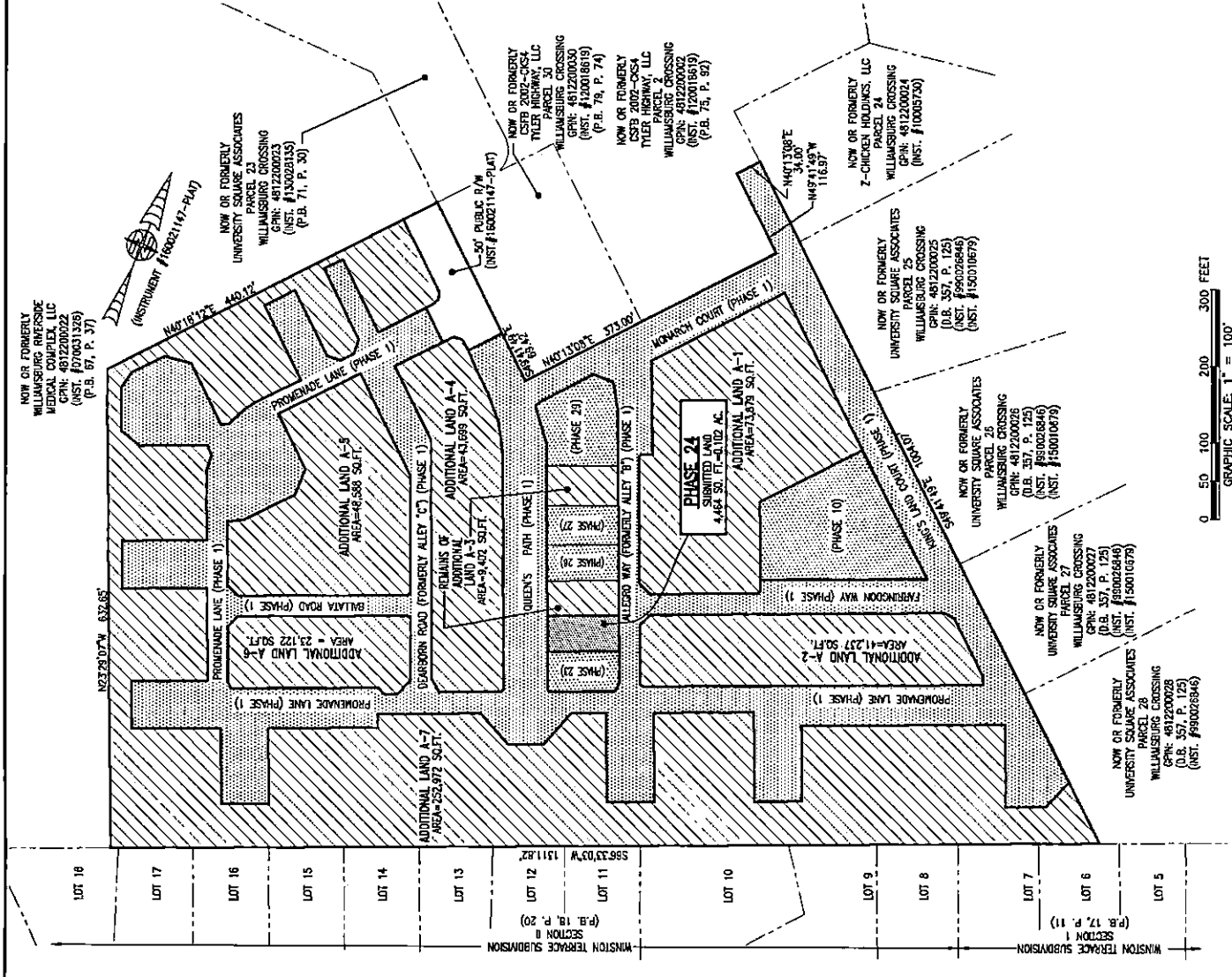
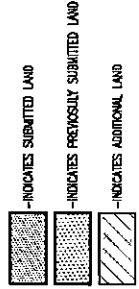
**PHASE 24
CONDOMINIUM PLAN AND PLAN
OF
THE PROMENADE
AT**

JOHN TYLER
A CONDOMINIUM
JAMES CITY COUNTY, VIRGINIA

Hayden Live and Associates, Inc.
Land Surveyors
133 KELLAM ROAD, SUITE 20
VIRGINIA BEACH, VA 23462
PH: (757) 491-2224 FAX: (757) 491-2229



DATE: JANUARY 9, 2018
SCALE: 1"=100'
SHEET 1 OF 5 THIS PHASE



580