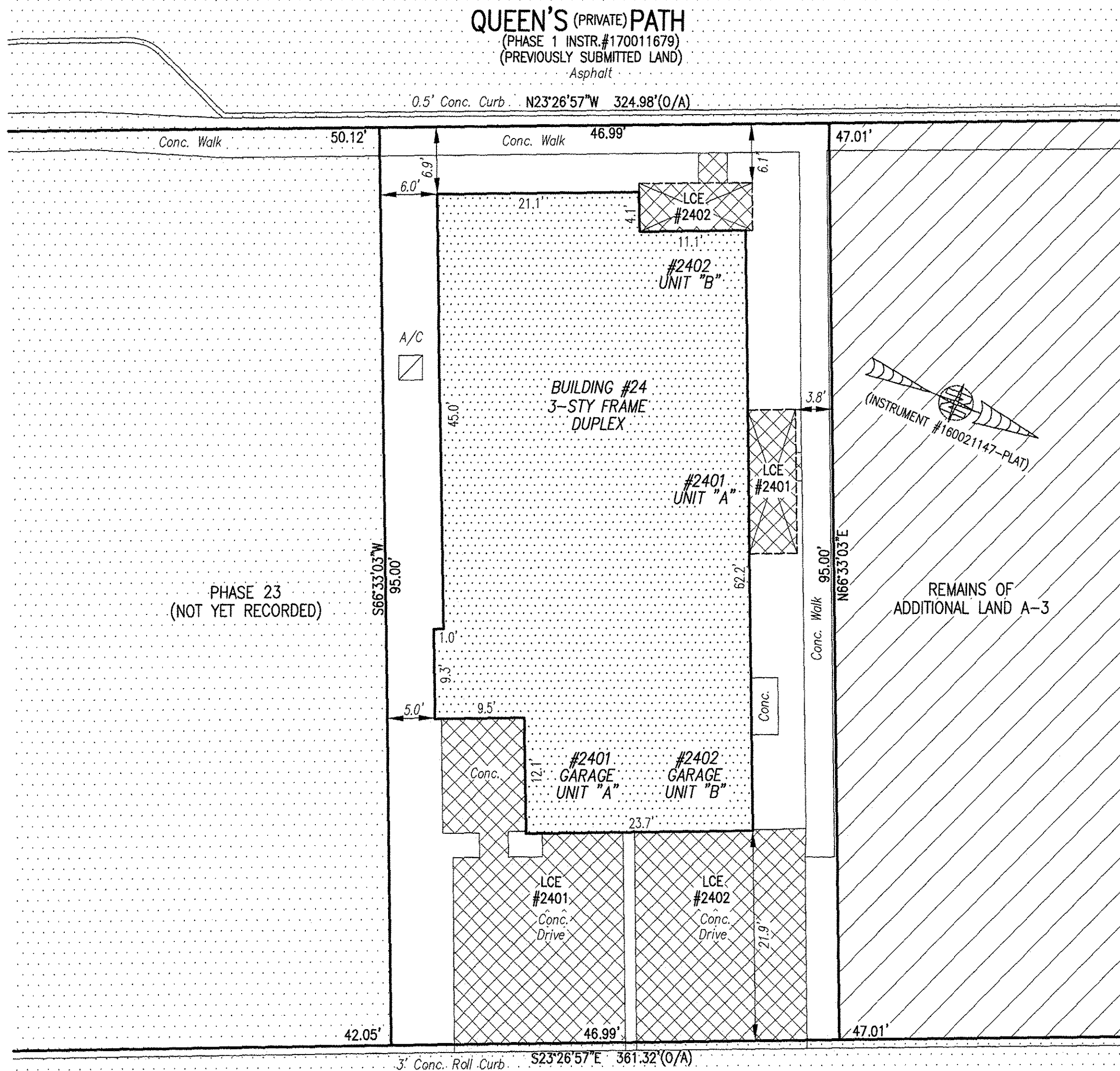


180005480

I HEREBY CERTIFY THAT THIS PLAT IS ACCURATE AND THAT IT COMPLIES WITH THE PROVISIONS OF THE CODE OF VIRGINIA OF 1950 AS AMENDED, § 55-79.58 AND I FURTHER CERTIFY THAT ALL IMPROVEMENTS THEREOF DEPICTED HEREON, PURSUANT TO THE CODE OF VIRGINIA § 55-79.58A, ARE NOT YET COMPLETED.



- INDICATES PREVIOUSLY SUBMITTED LAND
- INDICATES BUILDING AREA (SEE PLANS FOR UNIT DIMENSIONS)
- INDICATES LIMITED COMMON ELEMENT (LCE) ASSIGNED TO A UNIT # UNIT ASSIGNED
- INDICATES COMMON ELEMENT (EXCLUDING AREAS OUTSIDE SUBMITTED LAND)
- INDICATES ADDITIONAL LAND

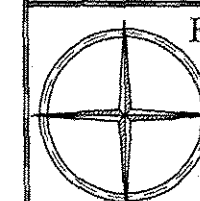
5 Large/Small Plat(s) Recorded herewith as # 180005480

City of Williamsburg & County of James City Circuit Court: This PLAT was recorded on Mar. 20, 2018 at 10:12 AM/PM, PG Document # 180005480 MONA A. FOLEY, CLERK

THIS SHEET: BUILDING DETAIL

PHASE 24  
CONDOMINIUM PLAT AND PLAN  
OF  
THE PROMENADE  
AT  
JOHN TYLER  
A CONDOMINIUM  
JAMES CITY COUNTY, VIRGINIA

Jo# 160921



Hayden Frye and Associates, Inc.  
Land Surveyors

333 KELLAM ROAD, SUITE 200  
VIRGINIA BEACH, VA., 23462  
PH: (757) 491-7228 FX: (757) 491-7229

DATE: JANUARY 9, 2018

SCALE: 1"=10'

SHEET 3 OF 5 THIS PHASE

JCC Subdivision Agent E66  
Approval Not Required



Allegro (Private) Way  
(Formerly Alley B)  
(Phase 1 Instr. #170011679)  
(Previously Submitted Land)

Phase 23  
(Not Yet Recorded)

Remains of  
Additional Land A-3