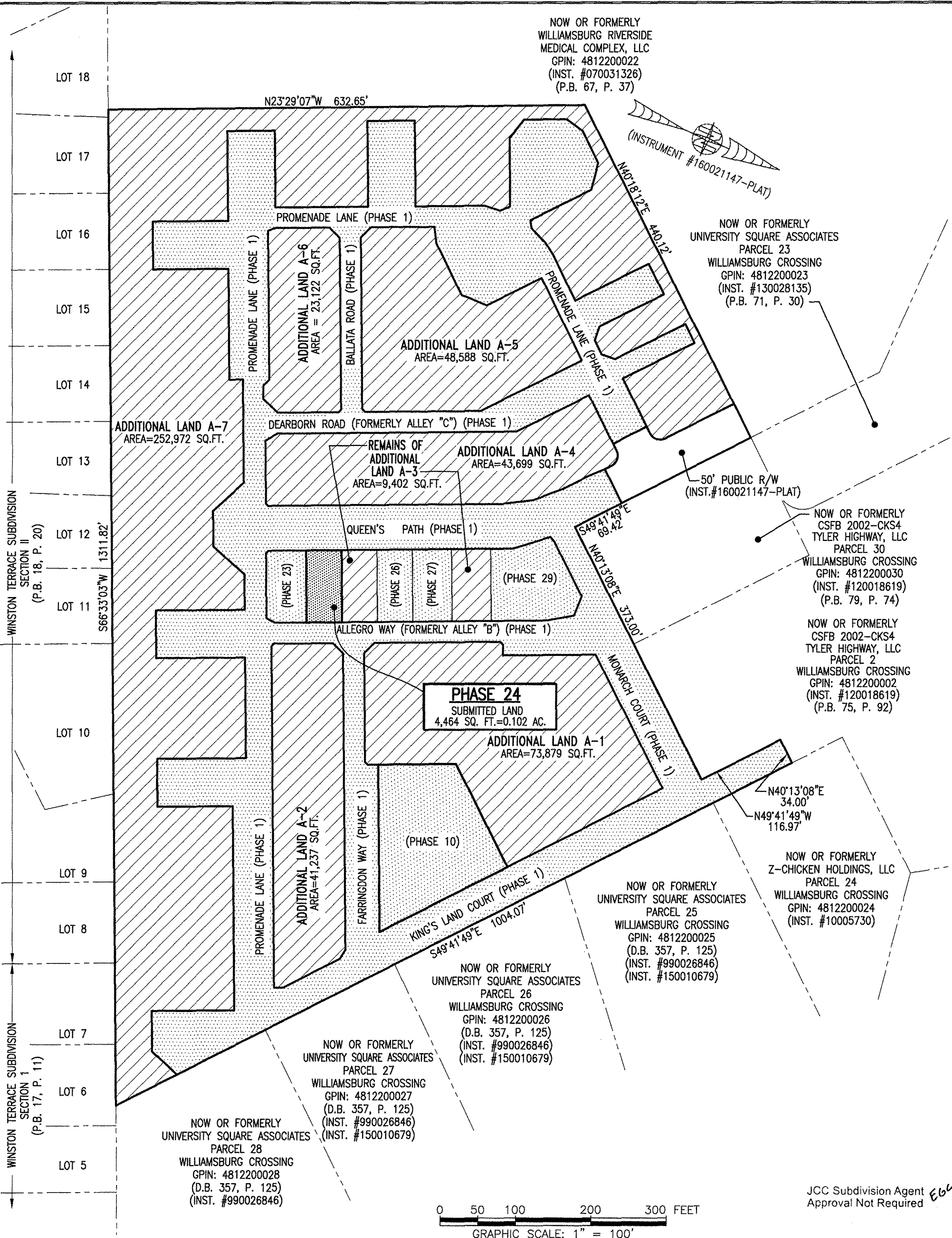
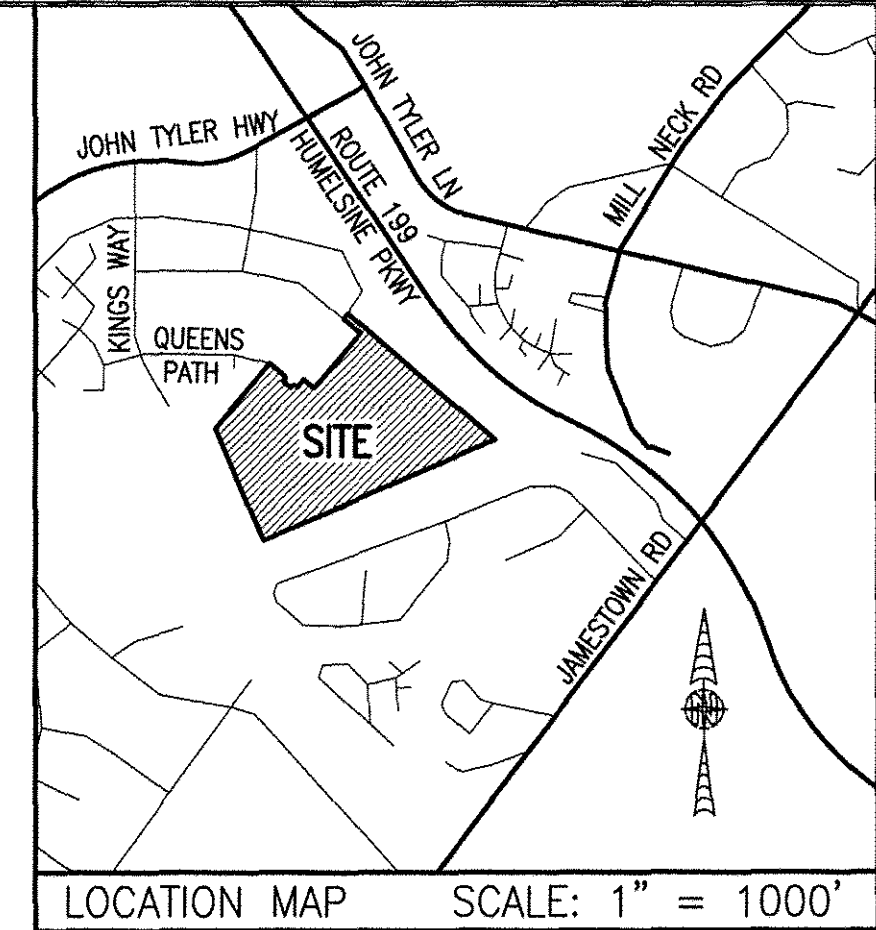
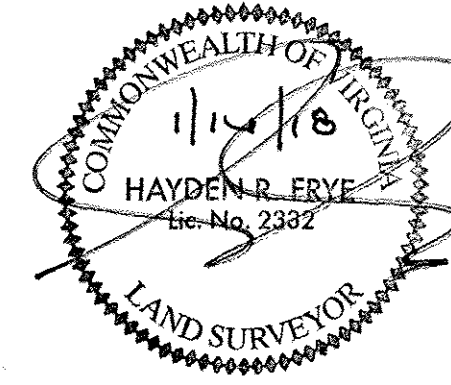


180005480

NOW OR FORMERLY
WILLIAMSBURG RIVERSIDE
MEDICAL COMPLEX, LLC
GPIN: 4812200022
(INST. #070031326)
(P.B. 67, P. 37)

I HEREBY CERTIFY THAT THIS PLAT IS ACCURATE AND THAT IT COMPLIES WITH THE PROVISIONS OF THE CODE OF VIRGINIA OF 1950 AS AMENDED, § 55-79.58 AND I FURTHER CERTIFY THAT ALL IMPROVEMENTS THEREOF DEPICTED HEREON, PURSUANT TO THE CODE OF VIRGINIA § 55-79.58A, ARE NOT YET COMPLETED.



NOW OR FORMERLY
UNIVERSITY SQUARE ASSOCIATES
PARCEL 23
WILLIAMSBURG CROSSING
GPIN: 4812200023
(INST. #130028135)
(P.B. 71, P. 30)

NOW OR FORMERLY
CSFB 2002-CKS4
TYLER HIGHWAY, LLC
PARCEL 30
WILLIAMSBURG CROSSING
GPIN: 4812200030
(INST. #120018619)
(P.B. 79, P. 74)

NOW OR FORMERLY
CSFB 2002-CKS4
TYLER HIGHWAY, LLC
PARCEL 2
WILLIAMSBURG CROSSING
GPIN: 4812200002
(INST. #120018619)
(P.B. 75, P. 92)

NOW OR FORMERLY
Z-CHICKEN HOLDINGS, LLC
PARCEL 24
WILLIAMSBURG CROSSING
GPIN: 4812200024
(INST. #10005730)

NOW OR FORMERLY
UNIVERSITY SQUARE ASSOCIATES
PARCEL 25
WILLIAMSBURG CROSSING
GPIN: 4812200025
(D.B. 357, P. 125)
(INST. #990026846)
(INST. #150010679)

NOW OR FORMERLY
UNIVERSITY SQUARE ASSOCIATES
PARCEL 26
WILLIAMSBURG CROSSING
GPIN: 4812200026
(D.B. 357, P. 125)
(INST. #990026846)
(INST. #150010679)

NOW OR FORMERLY
UNIVERSITY SQUARE ASSOCIATES
PARCEL 27
WILLIAMSBURG CROSSING
GPIN: 4812200027
(D.B. 357, P. 125)
(INST. #990026846)
(INST. #150010679)

NOW OR FORMERLY
UNIVERSITY SQUARE ASSOCIATES
PARCEL 28
WILLIAMSBURG CROSSING
GPIN: 4812200028
(D.B. 357, P. 125)
(INST. #990026846)

AREA TABLE				
PHASE	BLDG#	STATUS/RECORDATION	SQUARE FEET	ACRES
1	N/A	INSTR.#170011679	268,468	6.163
10	10	INSTR.#170023466	25,806	0.592
23	23	NOT YET RECORDED	5,014	0.115
24	24	SUBSTANTIALLY COMPLETE	4,464	0.102
26	26	INSTR.#170021156	4,465	0.102
27	27	INSTR.#170021157	4,944	0.114
29	29	NOT YET RECORDED	10,569	0.243
REMAINS OF ADDITIONAL LAND A-1			73,879	1.697
ADDITIONAL LAND A-2			41,237	0.947
REMAINS OF ADDITIONAL LAND A-3			9,402	0.216
ADDITIONAL LAND A-4			43,699	1.003
ADDITIONAL LAND A-5			48,588	1.115
ADDITIONAL LAND A-6			23,122	0.531
ADDITIONAL LAND A-7			252,972	5.807
TOTAL: NEW PARCEL 29			816,629	18.747

LEGAL DESCRIPTION

PROPERTY SHOWN HEREON BEING "NEW PARCEL 29" CONTAINING 18.747 ACRES AS SHOWN ON "PLAT OF LOT LINE EXTINGUISHMENT BEING PARCELS 20 AND 29 OF WILLIAMSBURG CROSSING" PREPARED BY AES CONSULTING ENGINEERS, DATED 10-24-16 AND RECORDED AS INSTRUMENT NO. 160021147.

NOTES:

- PHASE 24 BUILDING 24 IS SUBSTANTIALLY COMPLETE.
- EASEMENTS AND BUILDING LINES SHOWN HEREON PER THE FOLLOWING:
 - ALTA SURVEY BY AES CONSULTING ENGINEERS, DATED 3-23-15
 - PLAT BY AES CONSULTING ENGINEERS, DATED 10-24-16, INST.#160021147
 - PLAN OF DEVELOPMENT BY AES CONSULTING ENGINEERS, DATED 9-8-16

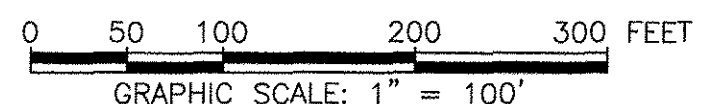
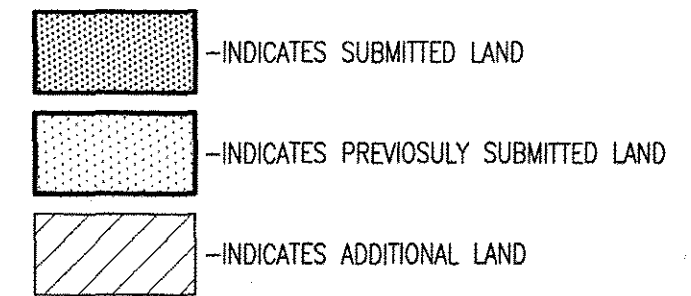
SHEET INDEX:

- SHEET 1 OF 5: OVERALL SITE LAYOUT AND AREAS
- SHEET 2 OF 5: PROPERTY DATA, EASEMENTS, CURVE AND LINE TABLE
- SHEET 3 OF 5: BUILDING DETAIL
- SHEET 4 OF 5: FOUNDATION PLAN AND SECTION
- SHEET 5 OF 5: FLOOR PLANS

THIS SHEET: OVERALL SITE LAYOUT AND AREAS

5 Large/Small Plat(s) Recorded
herewith as # 180005480

City of Williamsburg & County of James City
Circuit Court: This PLAT was recorded on
Mar. 20, 2018
at 10:12 AM, PB PG
Document # 180005480
MONA A. FOLEY, CLERK



JCC Subdivision Agent
Approval Not Required E66

PHASE 24
CONDOMINIUM PLAT AND PLAN
OF
THE PROMENADE
AT
JOHN TYLER
A CONDOMINIUM
JAMES CITY COUNTY, VIRGINIA

Hayden Frye and Associates, Inc.
Land Surveyors
333 KELLAM ROAD, SUITE 200
VIRGINIA BEACH, VA, 23462
PH: (757) 491-7228 FX: (757) 491-7229

DATE: JANUARY 9, 2018
SCALE: 1"=100'
SHEET 1 OF 5 THIS PHASE