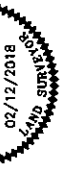


SURVEYORS CERTIFICATE

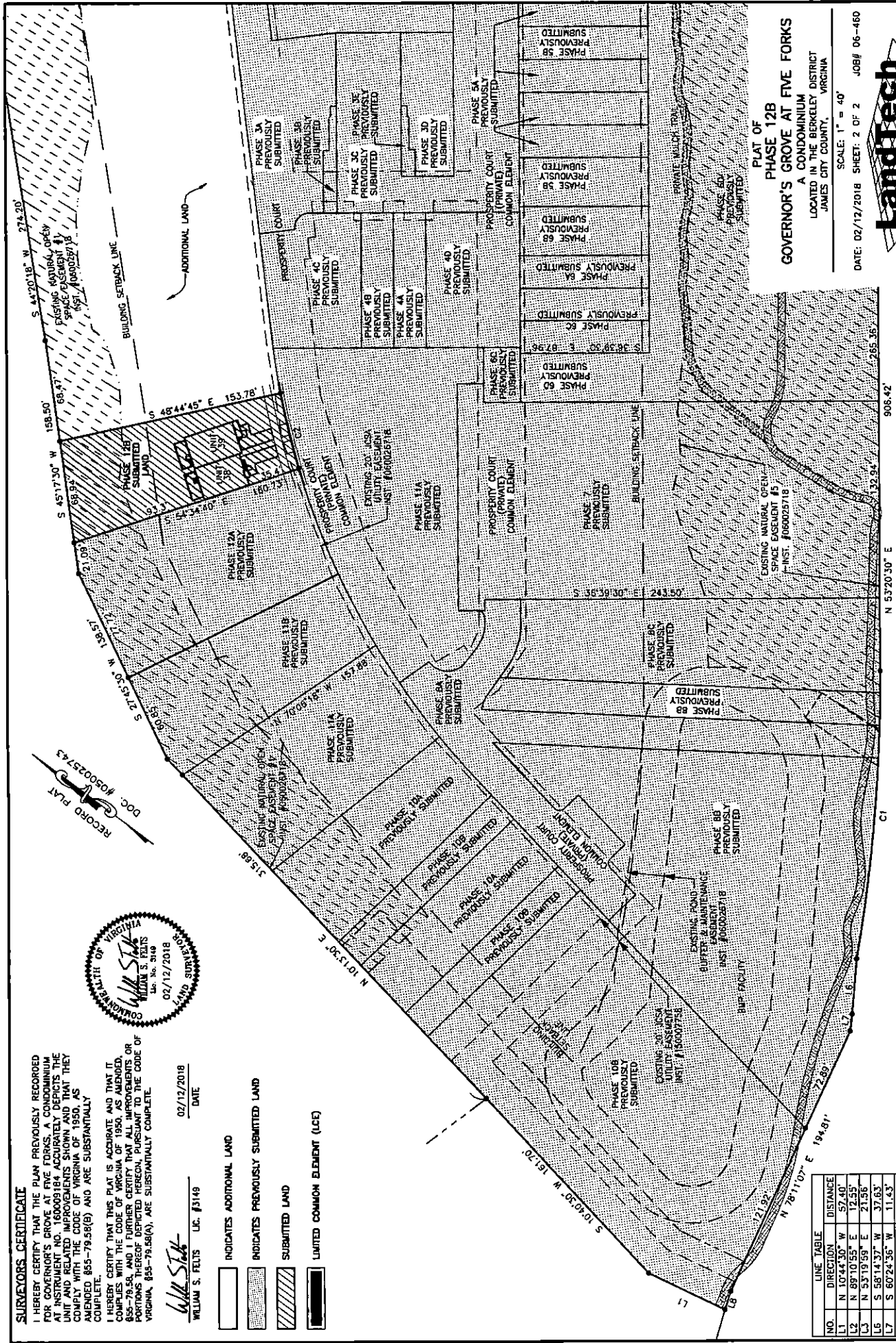
I HEREBY CERTIFY THAT THE PLAN PREVIOUSLY RECORDED FOR GOVERNOR'S GROVE AT FIVE FORKS A CONDOMINIUM AT INSTRUMENT NO. 160009184 ACCURATELY DEPICTS THE UNIT AND RELATED IMPROVEMENTS SHOWN AND THAT THEY COMPLY WITH THE CODE OF VIRGINIA OF 1950, AS AMENDED 855-79.56(B) AND ARE SUBSTANTIALLY COMPLETE.

I HEREBY CERTIFY THAT THIS PLAN IS ACCURATE AND THAT IT COMPLIES WITH THE CODE OF VIRGINIA OF 1950, AS AMENDED, 855-79.56, AND I FURTHER CERTIFY THAT ALL IMPROVEMENTS OR PORTIONS THEREOF DEPICTED HEREON, PURSUANT TO THE CODE OF VIRGINIA, 855-79.56(A), ARE SUBSTANTIALLY COMPLETE.

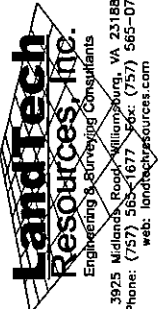


WILLIAM S. FELTS U.C. #3149
 DATE 02/12/2018
 SUPERVISOR

- INDICATES ADDITIONAL LAND
- INDICATES PREVIOUSLY SUBMITTED LAND
- SUBMITTED LAND
- LIMITED COMMON ELEMENT (LCE)



PLAT OF
PHASE 12B
GOVERNOR'S GROVE AT FIVE FORKS
 A CONDOMINIUM DISTRICT
 LOCATED IN THE BERKELEY DISTRICT
 JAMES CITY COUNTY, VIRGINIA



DATE: 02/12/2018 SHEET: 2 OF 2 JOB# 06-460
 SCALE: 1" = 40'



JOHN TYLER HIGHWAY
 STATE ROUTE #5
 (VARIABLE WIDTH PUBLIC R/W)

NO.	DIRECTION	DISTANCE
L1	N 10°44'30" W	57.40'
L2	N 89°10'55" E	12.55'
L3	N 53°19'59" E	21.56'
L6	S 58°14'37" W	37.63'
L7	S 60°24'56" W	11.43'
L8	S 70°12'23" W	12.96'

NO.	DELTA	CHORD BEARING	RADIUS	ARC	CHORD
C1	100°00'21"	S 58°20'41" W	1116.00'	194.89'	194.64'
C2	54°43'31"	S 39°52'24" W	523.62'	52.47'	52.45'