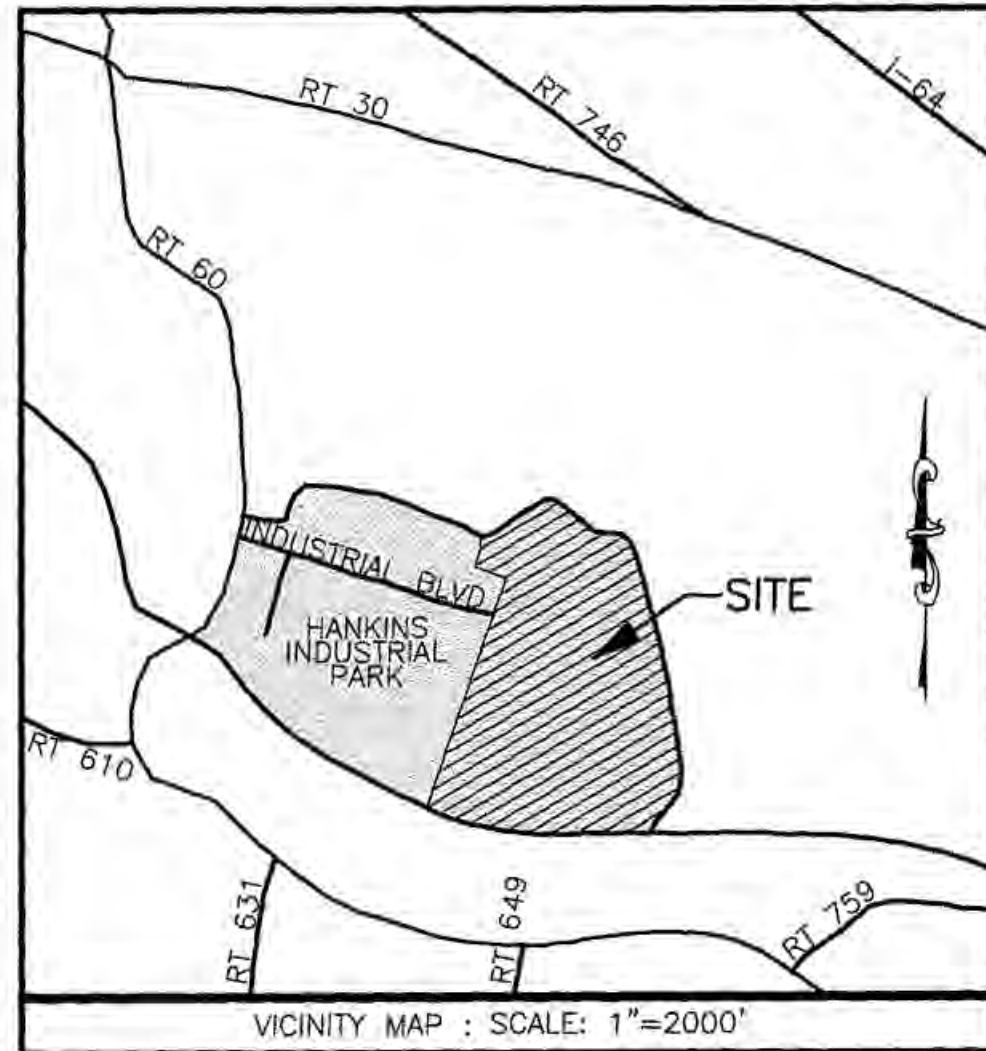


180001858



GENERAL NOTES

1. THIS PLAT WAS PRODUCED WITHOUT A TITLE REPORT AND MAY NOT REFLECT ALL MATTERS AFFECTING THE PROPERTY.
2. THIS PROPERTY APPEARS TO FALL IN ZONE "X" AS SHOWN ON FLOOD INSURANCE RATE MAP #51095C0043D, DATED DECEMBER 16, 2015.
3. ALL UNITS TO BE SERVED BY PUBLIC WATER AND SEWER.
4. ALL LAND AND IMPROVEMENTS OUTSIDE OF PHASE LIMITS SHALL BE KNOWN AS COMMON ELEMENT.
5. THE STREETS WITHIN THIS CONDOMINIUM SHALL BE KNOWN AS COMMON ELEMENT AND NOT A PUBLIC DEDICATED RIGHT-OF-WAY.
6. ALL IMPROVEMENTS SHOWN HEREON ARE SHOWN PER THE APPROVED SITE PLAN FOR PHASE 1 AND HAVE NOT BEEN FIELD VERIFIED.
7. THE PROPERTY SHOWN HEREON STANDS IN THE NAME OF SURIN, LLC AND WAS ACQUIRED FROM GARNET JACOBS INDUSTRIAL REAL ESTATE, LLC AUGUST 13, 2014 BY DEED RECORDED IN THE CLERKS OFFICE FOR THE CITY OF WILLIAMSBURG JAMES CITY COUNTY AS INSTRUMENT NUMBER 140013050.

PLAT OF JACOB'S INDUSTRIAL CENTER PARCEL 1 A CONDOMINIUM

BEING LOCATED IN THE STONEHOUSE DISTRICT
OF JAMES CITY COUNTY, VIRGINIA

DATE: 12-06-2017 SHEET: 1 OF 5 JOB #14-102



3925 Midlands Road Williamsburg, VA 23188
Ph: (757) 565-1677 Fax: (757) 565-0782
web: landtechresources.com

I HEREBY CERTIFY THAT THIS PLAT IS ACCURATE AND THAT IT COMPLIES WITH THE CODE OF VIRGINIA OF 1950, AS AMENDED, §§55-79.5B, AND I FURTHER CERTIFY THAT ALL IMPROVEMENTS OR PORTIONS THEREOF DEPICTED HEREON, PURSUANT TO THE CODE OF VIRGINIA, §§55-79.5B(A), ARE SUBSTANTIALLY COMPLETE.

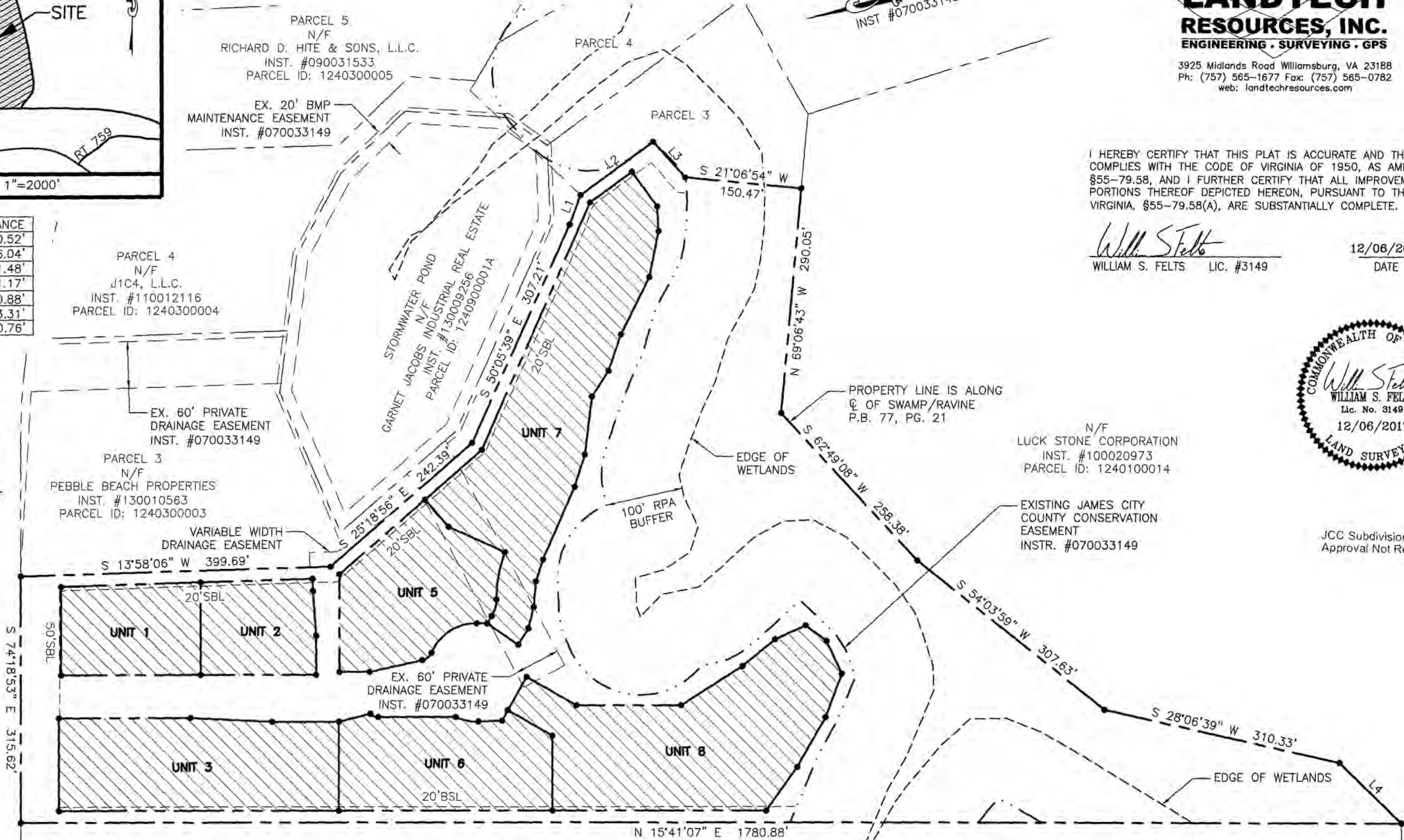
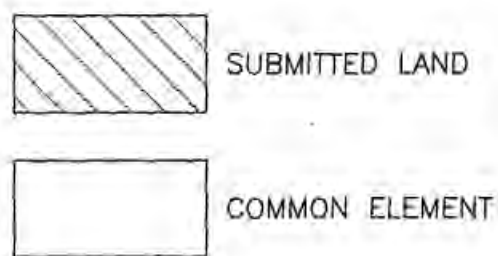
William S. Felts
WILLIAM S. FELTS LIC. #3149

12/06/2017
DATE



JCC Subdivision Agent Approval Not Required E6c

LINE	BEARING	DISTANCE
L1	S 53°54'49" E	40.52'
L2	S 20°26'20" E	116.04'
L3	S 63°50'38" W	61.48'
L4	S 59°36'49" W	111.17'
L5	N 41°44'24" W	10.88'
L6	N 16°21'04" E	13.31'
L7	S 13°23'28" W	30.76'



CURVE	ARC LENGTH	RADIUS	DELTA ANGLE	CHORD BEARING	CHORD LENGTH
C1	62.14'	172.00'	20°42'01"	N 63°59'36" W	61.80'
C2	22.76'	40.00'	32°36'12"	S 58°02'30" E	22.46'
C3	73.66'	63.00'	66°59'40"	N 17°08'47" W	69.54'
C4	16.03'	17.00'	54°01'13"	S 23°38'00" E	15.44'
C5	10.84'	13.00'	47°45'52"	S 39°34'03" W	10.53'
C6	30.11'	63.00'	27°22'56"	S 27°04'56" W	29.82'

5 Large/Small Plat(s) Recorded
herewith as # 180001858

PARCELS A & B
N/F
OWENS-BROCKWAY GLASS CONTAINER, INC.
D.B. 492, PG. 352
PARCEL ID: 1240100015

City of Williamsburg & County of James City
Circuit Court: This PLAT was recorded on
Jan 23 2018

at 12:49 AM / PG
Document # 180001858
MONA A. FOLEY, CLERK

Mona A. Foley Clerk
John Hinkle DC

AREA TABLE

PHASE	SQ. FT.	ACRES
SUBMITTED LAND UNITS 1-8	170,794	3.921
COMMON ELEMENT	510,871	11.728
TOTAL	681,665	15.649

