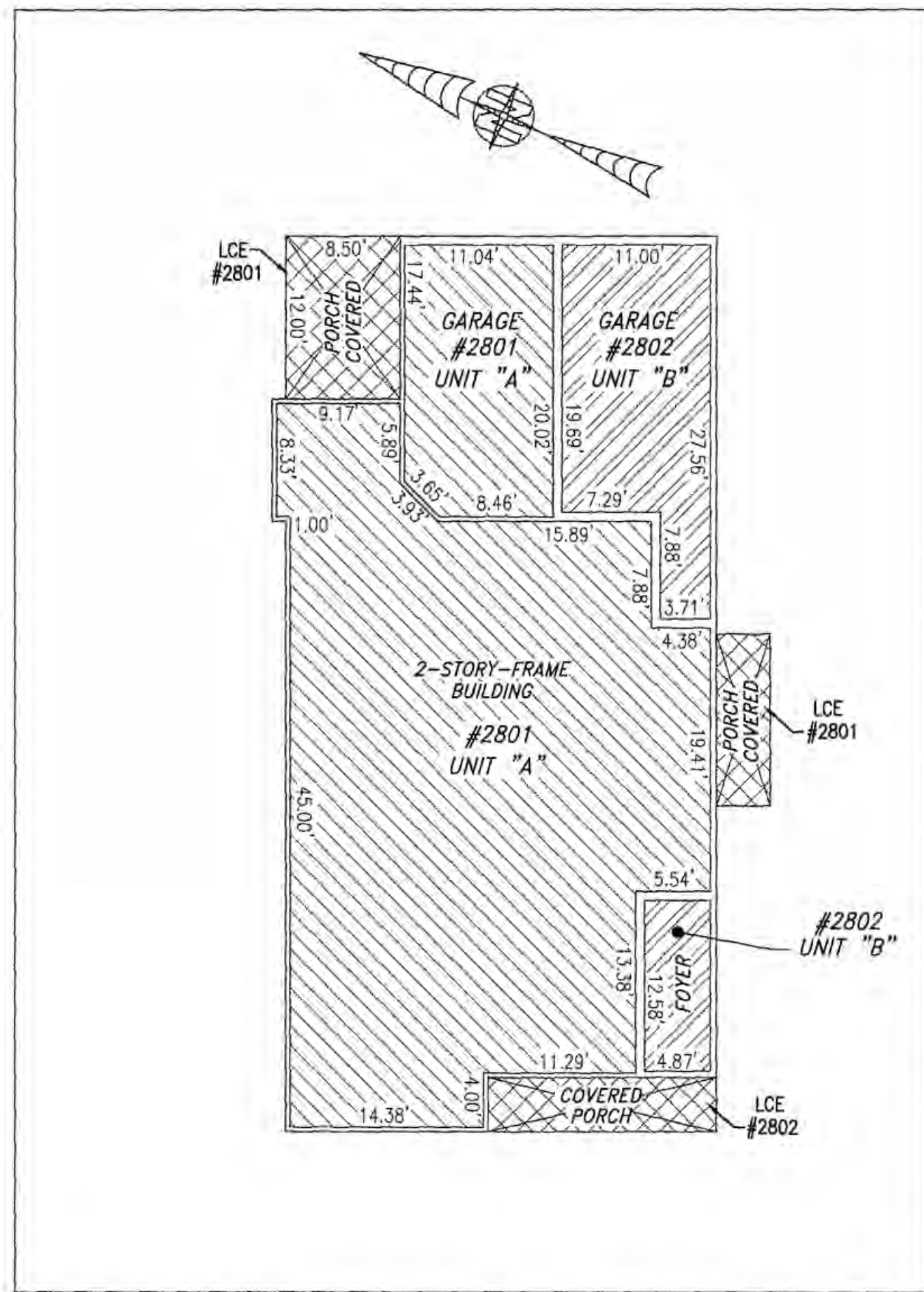
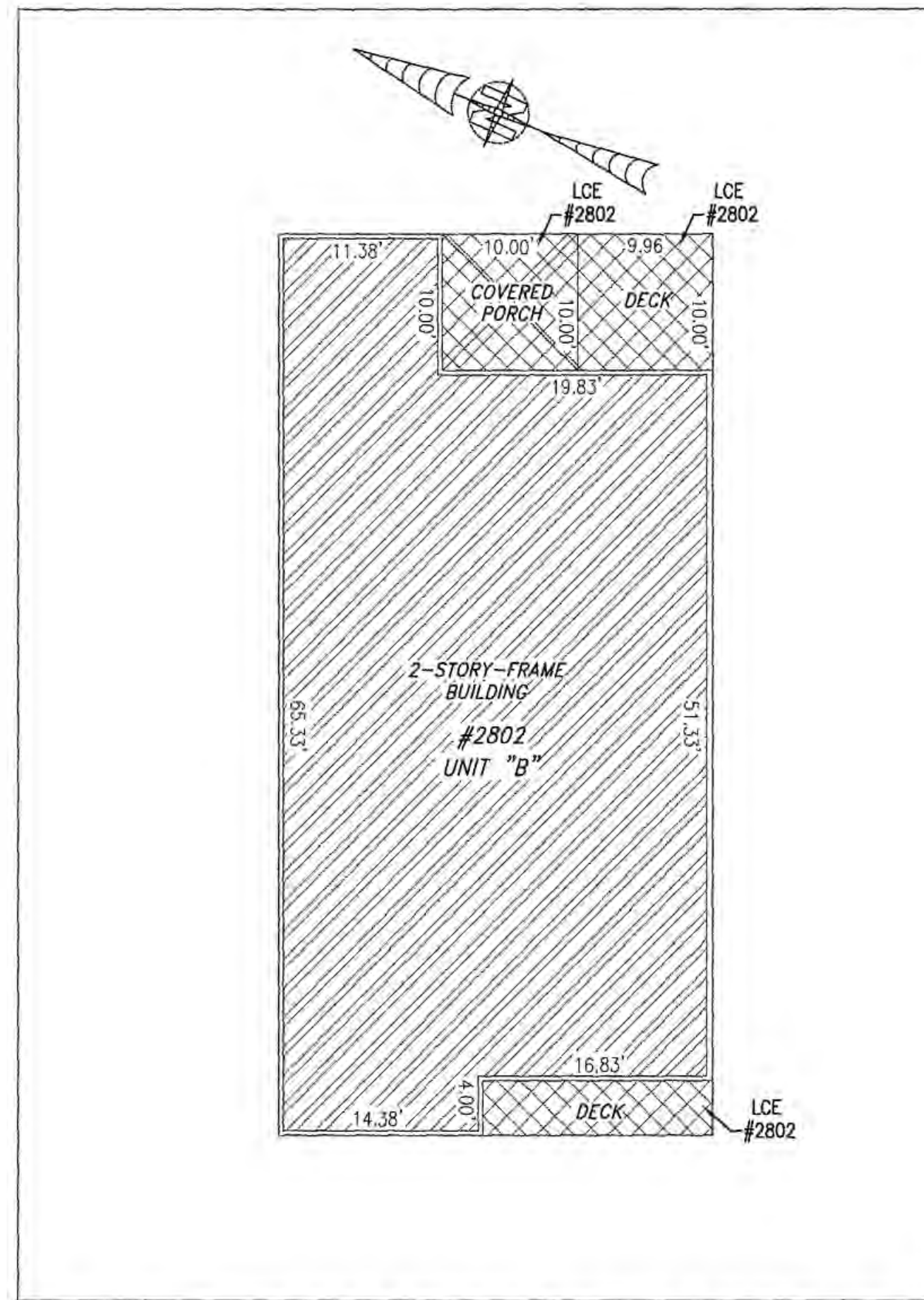


180001781

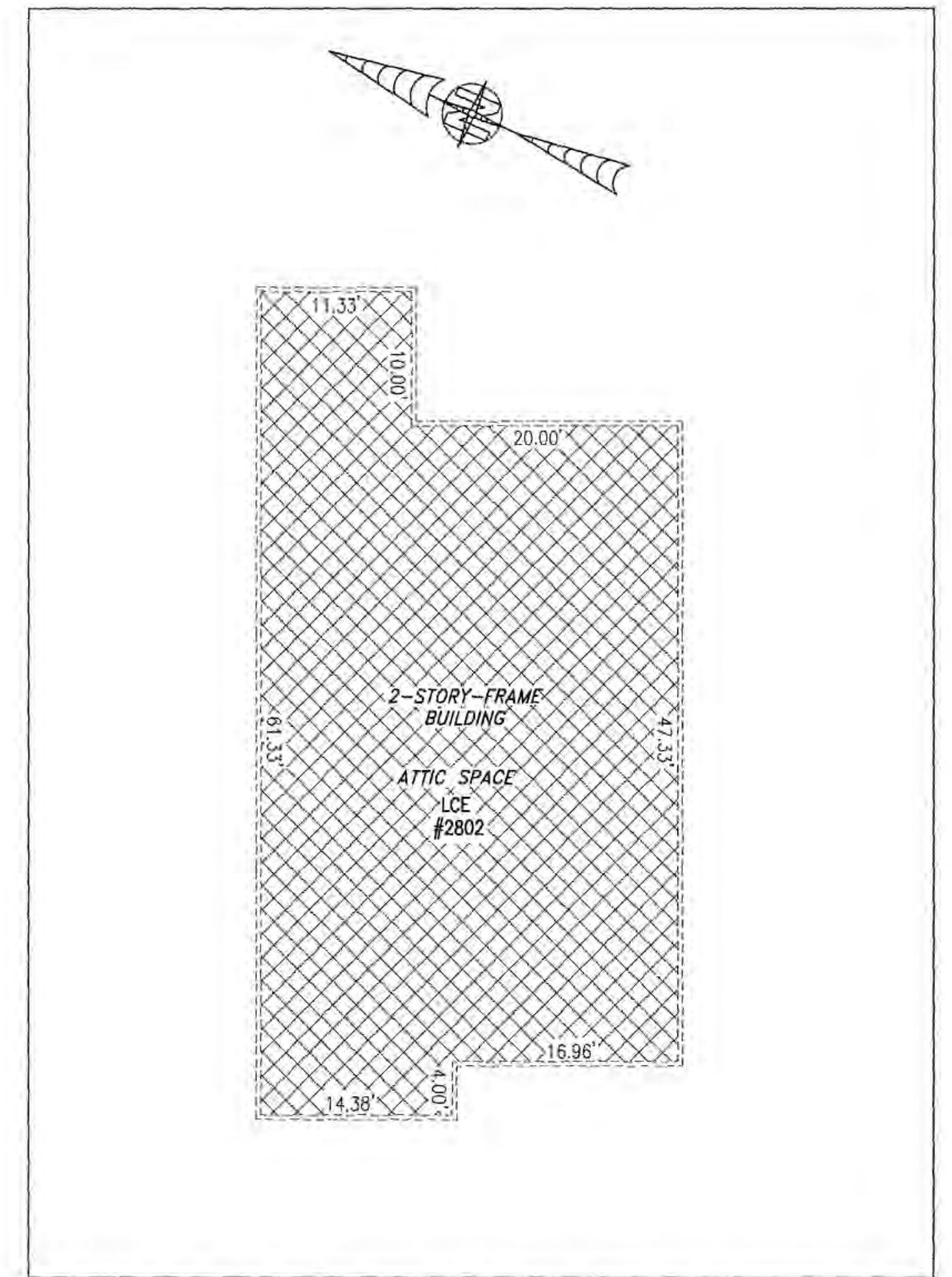
BUILDING 28 (DUPLEX)



FIRST FLOOR



SECOND FLOOR



ATTIC SPACE

UNIT ID	UNIT DESCRIPTION	UNIT ADDRESS
A	-INDICATES AREA OF UNIT 2801	#2801 QUEEN'S PATH
B	-INDICATES AREA OF UNIT 2802	#2802 QUEEN'S PATH
	-INDICATES COMMON ELEMENT	
	-INDICATES LIMITED COMMON ELEMENT	

I HEREBY CERTIFY THAT THIS PLAN IS ACCURATE AND THAT IT COMPLIES WITH THE PROVISIONS OF THE CODE OF VIRGINIA OF 1950 AS AMENDED, § 55-79.58 AND I FURTHER CERTIFY THAT ALL UNITS THEREOF DEPICTED HEREON, PURSUANT TO THE CODE OF VIRGINIA § 55-79.58B, ARE SUBSTANTIALLY COMPLETE.

5 Large/Small Plat(s) Recorded  
herewith as # 180001781

City of Williamsburg & County of James City  
Circuit Court: This PLAT was recorded on  
23 Jan 2018  
at 9:38 AM/PM, PB PG  
Document # 180001781  
MONA A. FOLEY, CLERK

*Monica A. Foley*, Clerk  
*James Swafford DC*



JCC Subdivision Agent *EB*  
Approval Not Required

THIS SHEET: FLOOR PLANS

PHASE 28  
CONDOMINIUM PLAT AND PLAN  
OF  
THE PROMENADE  
AT  
JOHN TYLER  
A CONDOMINIUM  
JAMES CITY COUNTY, VIRGINIA

Job# 180921



Hayden Frye and Associates, Inc.

Land Surveyors

333 KELLAM ROAD, SUITE 200  
VIRGINIA BEACH, VA., 23462  
PH: (757) 491-7228 FX: (757) 491-7229

DATE: JANUARY 9, 2018

SCALE: 1"=10'

SHEET 5 OF 5 THIS PHASE