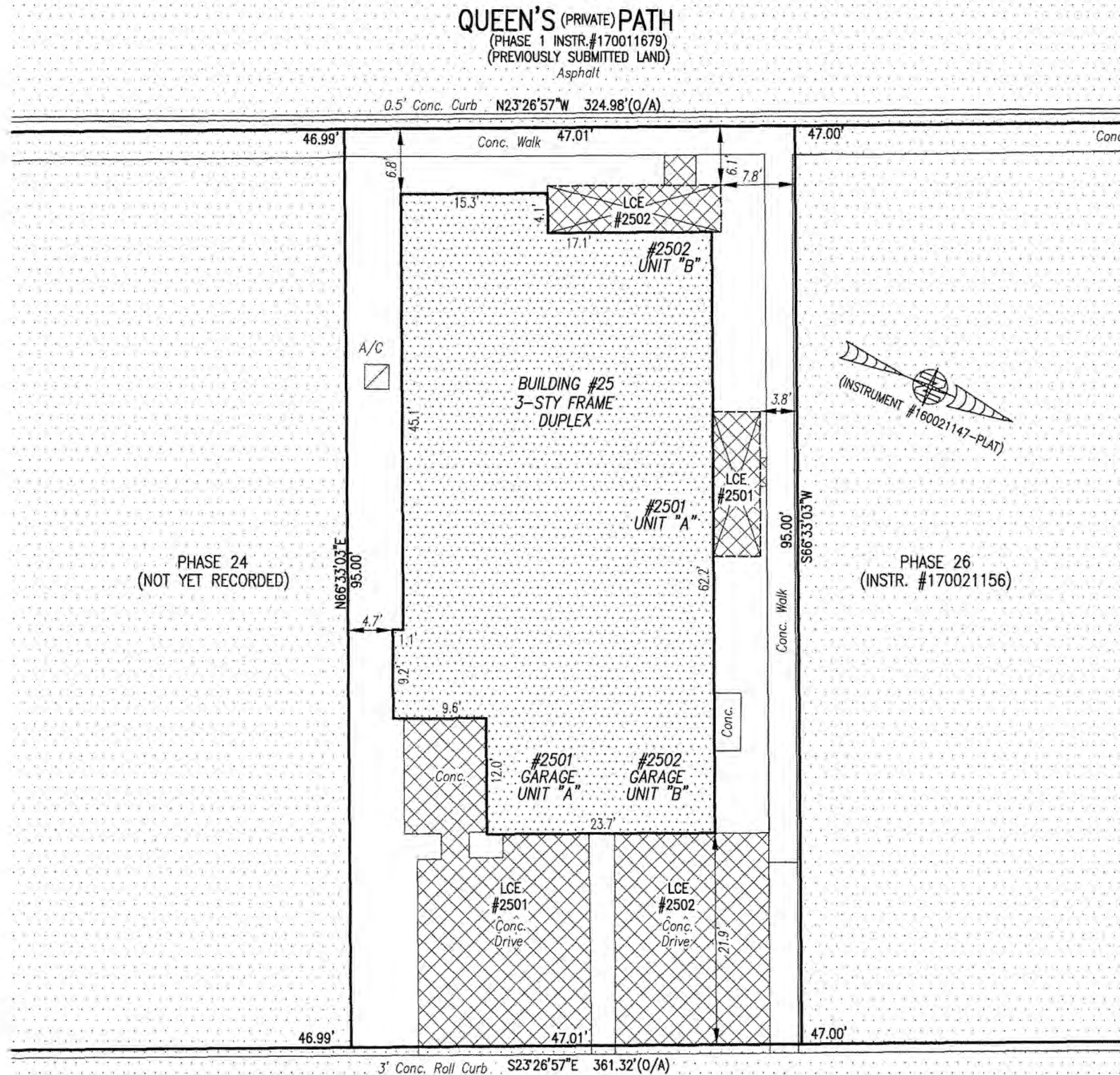


180001779

I HEREBY CERTIFY THAT THIS PLAT IS ACCURATE AND THAT IT COMPLIES WITH THE PROVISIONS OF THE CODE OF VIRGINIA OF 1950 AS AMENDED, § 55-79.58 AND I FURTHER CERTIFY THAT ALL IMPROVEMENTS THEREOF DEPICTED HEREON, PURSUANT TO THE CODE OF VIRGINIA § 55-79.58A, ARE NOT YET COMPLETED.



- INDICATES PREVIOUSLY SUBMITTED LAND
- INDICATES BUILDING AREA (SEE PLANS FOR UNIT DIMENSIONS)
- INDICATES LIMITED COMMON ELEMENT (LCE) ASSIGNED TO A UNIT # UNIT ASSIGNED
- INDICATES COMMON ELEMENT (EXCLUDING AREAS OUTSIDE SUBMITTED LAND)
- INDICATES ADDITIONAL LAND

5 Large/Small Plat(s) Recorded herewith as # 180001779

City of Williamsburg & County of James City Circuit Court: This PLAT was recorded on 23 Jan 2018

at 9:30 AM/PM; PB PG

Document # 180001779

MONA A. FOLEY, CLERK

*Mona A. Foley*, Clerk

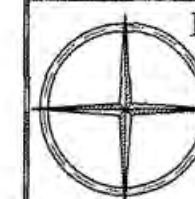
*Jeanne Swafford DC*

THIS SHEET: BUILDING DETAIL

**PHASE 25**  
**CONDOMINIUM PLAT AND PLAN**  
 OF  
**THE PROMENADE**  
 AT  
**JOHN TYLER**  
 A CONDOMINIUM  
 JAMES CITY COUNTY, VIRGINIA

Jo# 160921

Hayden Frye and Associates, Inc.



**Land Surveyors**

333 KELLAM ROAD, SUITE 200  
 VIRGINIA BEACH, VA., 23462  
 PH: (757) 491-7228 FX: (757) 491-7229

DATE: JANUARY 9, 2018

SCALE: 1"=10'

SHEET 3 OF 5 THIS PHASE

JCC Subdivision Agent Approval Not Required *EGW*

