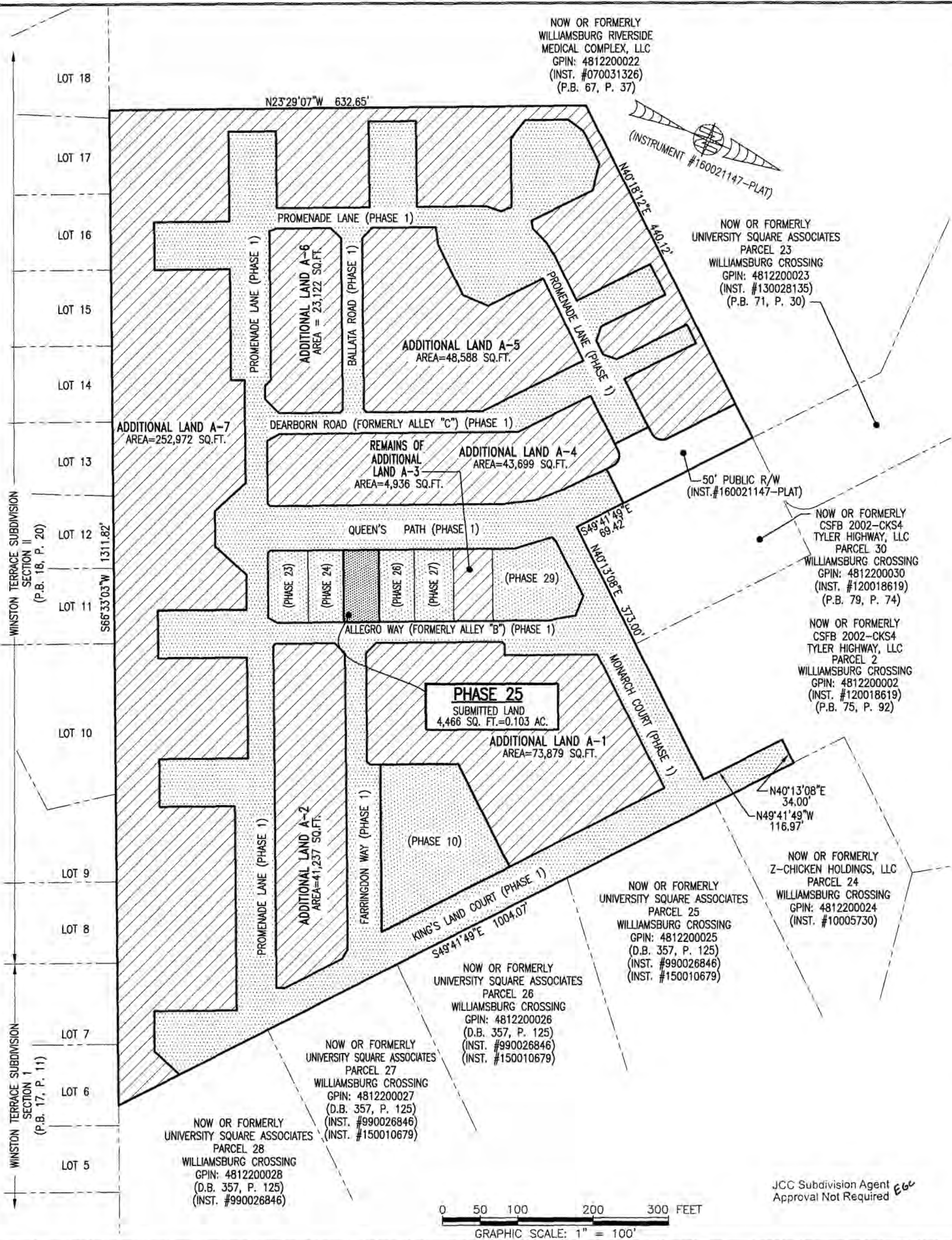
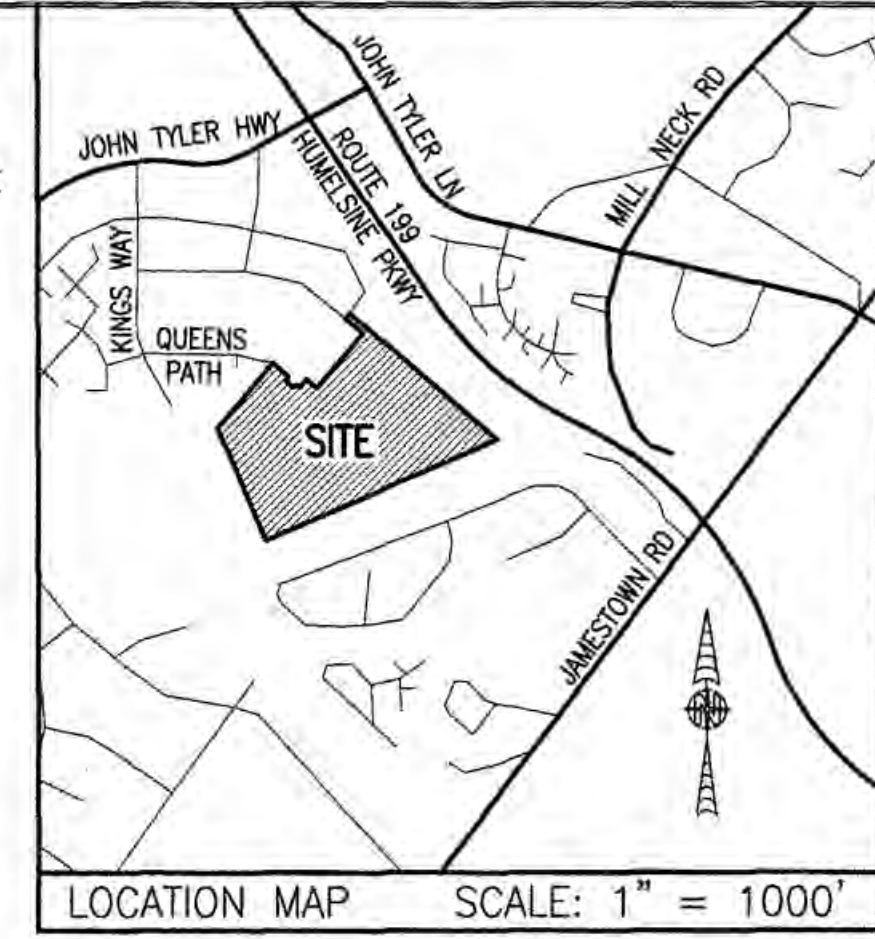


180001779

NOW OR FORMERLY  
WILLIAMSBURG RIVERSIDE  
MEDICAL COMPLEX, LLC  
GPIN: 4812200022  
(INST. #070031326)  
(P.B. 67, P. 37)

I HEREBY CERTIFY THAT THIS PLAT IS ACCURATE AND THAT IT COMPLIES WITH THE PROVISIONS OF THE CODE OF VIRGINIA OF 1950 AS AMENDED, § 55-79.58 AND I FURTHER CERTIFY THAT ALL IMPROVEMENTS THEREOF DEPICTED HEREON, PURSUANT TO THE CODE OF VIRGINIA § 55-79.58A, ARE NOT YET COMPLETED.



NOW OR FORMERLY  
UNIVERSITY SQUARE ASSOCIATES  
PARCEL 23  
WILLIAMSBURG CROSSING  
GPIN: 4812200023  
(INST. #130028135)  
(P.B. 71, P. 30)

NOW OR FORMERLY  
CSFB 2002-CKS4  
TYLER HIGHWAY, LLC  
PARCEL 30  
WILLIAMSBURG CROSSING  
GPIN: 4812200030  
(INST. #120018619)  
(P.B. 79, P. 74)

NOW OR FORMERLY  
CSFB 2002-CKS4  
TYLER HIGHWAY, LLC  
PARCEL 2  
WILLIAMSBURG CROSSING  
GPIN: 4812200002  
(INST. #120018619)  
(P.B. 75, P. 92)

NOW OR FORMERLY  
Z-CHICKEN HOLDINGS, LLC  
PARCEL 24  
WILLIAMSBURG CROSSING  
GPIN: 4812200024  
(INST. #10005730)

NOW OR FORMERLY  
UNIVERSITY SQUARE ASSOCIATES  
PARCEL 25  
WILLIAMSBURG CROSSING  
GPIN: 4812200025  
(D.B. 357, P. 125)  
(INST. #990026846)  
(INST. #150010679)

NOW OR FORMERLY  
UNIVERSITY SQUARE ASSOCIATES  
PARCEL 26  
WILLIAMSBURG CROSSING  
GPIN: 4812200026  
(D.B. 357, P. 125)  
(INST. #990026846)  
(INST. #150010679)

NOW OR FORMERLY  
UNIVERSITY SQUARE ASSOCIATES  
PARCEL 27  
WILLIAMSBURG CROSSING  
GPIN: 4812200027  
(D.B. 357, P. 125)  
(INST. #990026846)  
(INST. #150010679)

NOW OR FORMERLY  
UNIVERSITY SQUARE ASSOCIATES  
PARCEL 28  
WILLIAMSBURG CROSSING  
GPIN: 4812200028  
(D.B. 357, P. 125)  
(INST. #990026846)

AREA TABLE				
PHASE	BLDG#	STATUS/RECORDATION	SQUARE FEET	ACRES
1	N/A	INSTR.#170011679	268,468	6.163
10	10	INSTR.#170023466	25,806	0.592
23	23	NOT YET RECORDED	5,014	0.115
24	24	NOT YET RECORDED	4,464	0.102
25	25	SUBSTANTIALLY COMPLETE	4,466	0.103
26	26	INSTR.#170021156	4,465	0.102
27	27	INSTR.#170021157	4,944	0.114
29	29	NOT YET RECORDED	10,569	0.243
REMAINS OF ADDITIONAL LAND A-1			73,879	1.697
ADDITIONAL LAND A-2			41,237	0.947
REMAINS OF ADDITIONAL LAND A-3			4,936	0.113
ADDITIONAL LAND A-4			43,699	1.003
ADDITIONAL LAND A-5			48,588	1.115
ADDITIONAL LAND A-6			23,122	0.531
ADDITIONAL LAND A-7			252,972	5.807
TOTAL: NEW PARCEL 29			816,629	18.747

LEGAL DESCRIPTION

PROPERTY SHOWN HEREON BEING "NEW PARCEL 29" CONTAINING 18.747 ACRES AS SHOWN ON "PLAT OF LOT LINE EXTINGUISHMENT BEING PARCELS 20 AND 29 OF WILLIAMSBURG CROSSING" PREPARED BY AES CONSULTING ENGINEERS, DATED 10-24-16 AND RECORDED AS INSTRUMENT NO. 160021147.

NOTES:

- PHASE 25 BUILDING 25 IS SUBSTANTIALLY COMPLETE.
- EASEMENTS AND BUILDING LINES SHOWN HEREON PER THE FOLLOWING:
  - ALTA SURVEY BY AES CONSULTING ENGINEERS, DATED 3-23-15
  - PLAT BY AES CONSULTING ENGINEERS, DATED 10-24-16, INST.#160021147
  - PLAN OF DEVELOPMENT BY AES CONSULTING ENGINEERS, DATED 9-8-16

5 Large/Small Plat(s) Recorded  
herewith as # 180001779

City of Williamsburg & County of James City  
Circuit Court: This PLAT was recorded on  
23 Jan 2018

at 9:30 AM/PM, PB PG  
Document # 180001779  
MONA A. FOLEY, CLERK

*Mona Foley*, Clerk  
*Jeanne Swafford DC*

SHEET INDEX:

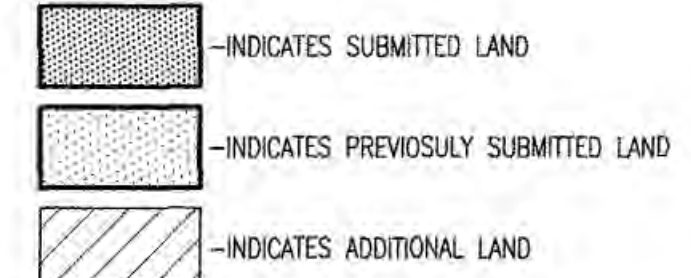
SHEET 1 OF 5:	OVERALL SITE LAYOUT AND AREAS
SHEET 2 OF 5:	PROPERTY DATA, EASEMENTS, CURVE AND LINE TABLE
SHEET 3 OF 5:	BUILDING DETAIL
SHEET 4 OF 5:	FOUNDATION PLAN AND SECTION
SHEET 5 OF 5:	FLOOR PLANS

THIS SHEET: OVERALL SITE LAYOUT AND AREAS

**PHASE 25**  
**CONDOMINIUM PLAT AND PLAN**  
OF  
**THE PROMENADE**  
AT  
**JOHN TYLER**  
A CONDOMINIUM  
JAMES CITY COUNTY, VIRGINIA

Joe# 150921  
Hayden Frye and Associates, Inc.  
**Land Surveyors**  
333 KELLAM ROAD, SUITE 200  
VIRGINIA BEACH, VA, 23462  
PH: (757) 491-7228 FAX: (757) 491-7229

DATE: JANUARY 9, 2018  
SCALE: 1"=100'  
SHEET 1 OF 5 THIS PHASE



JCC Subdivision Agent Approval Not Required

