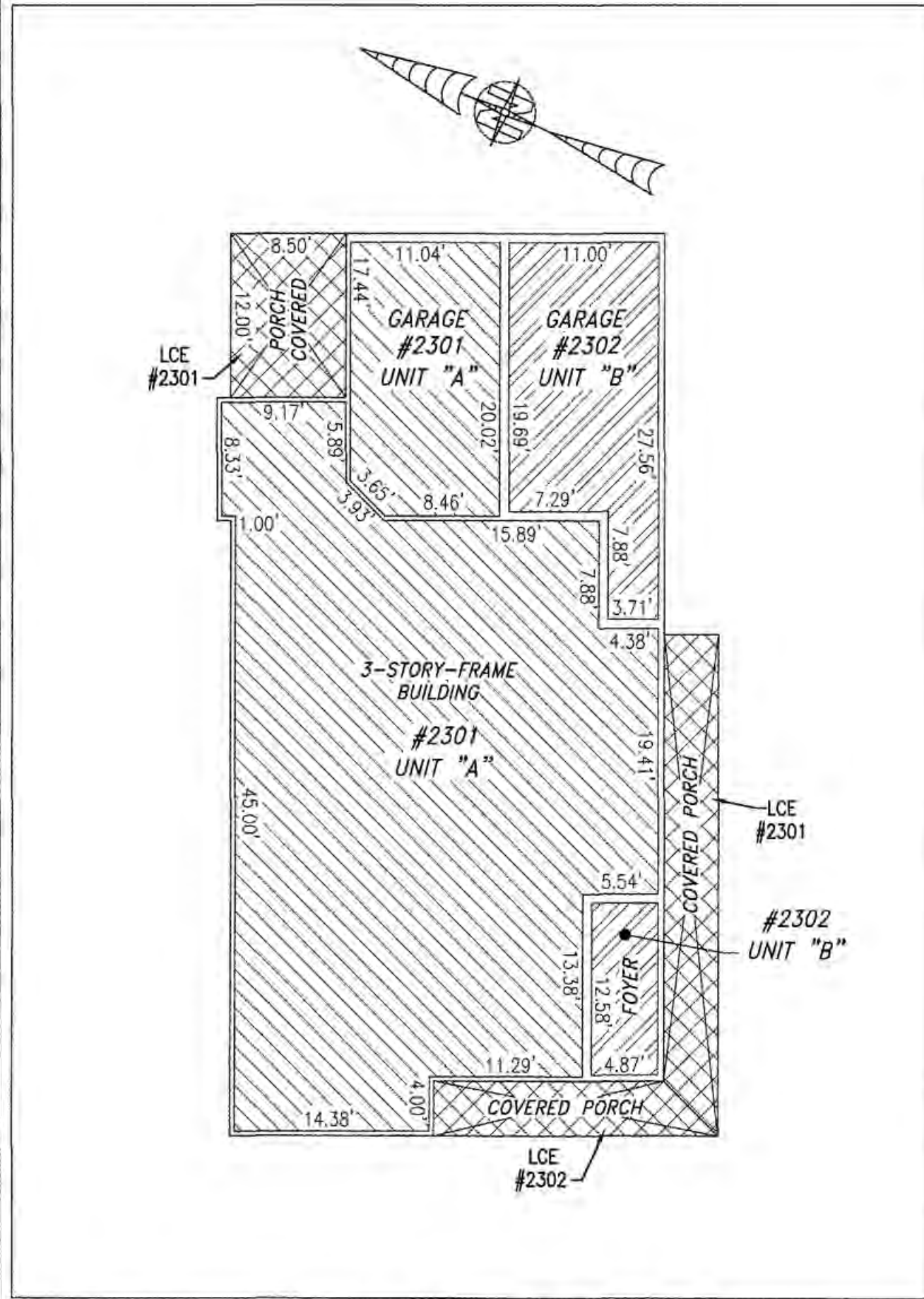
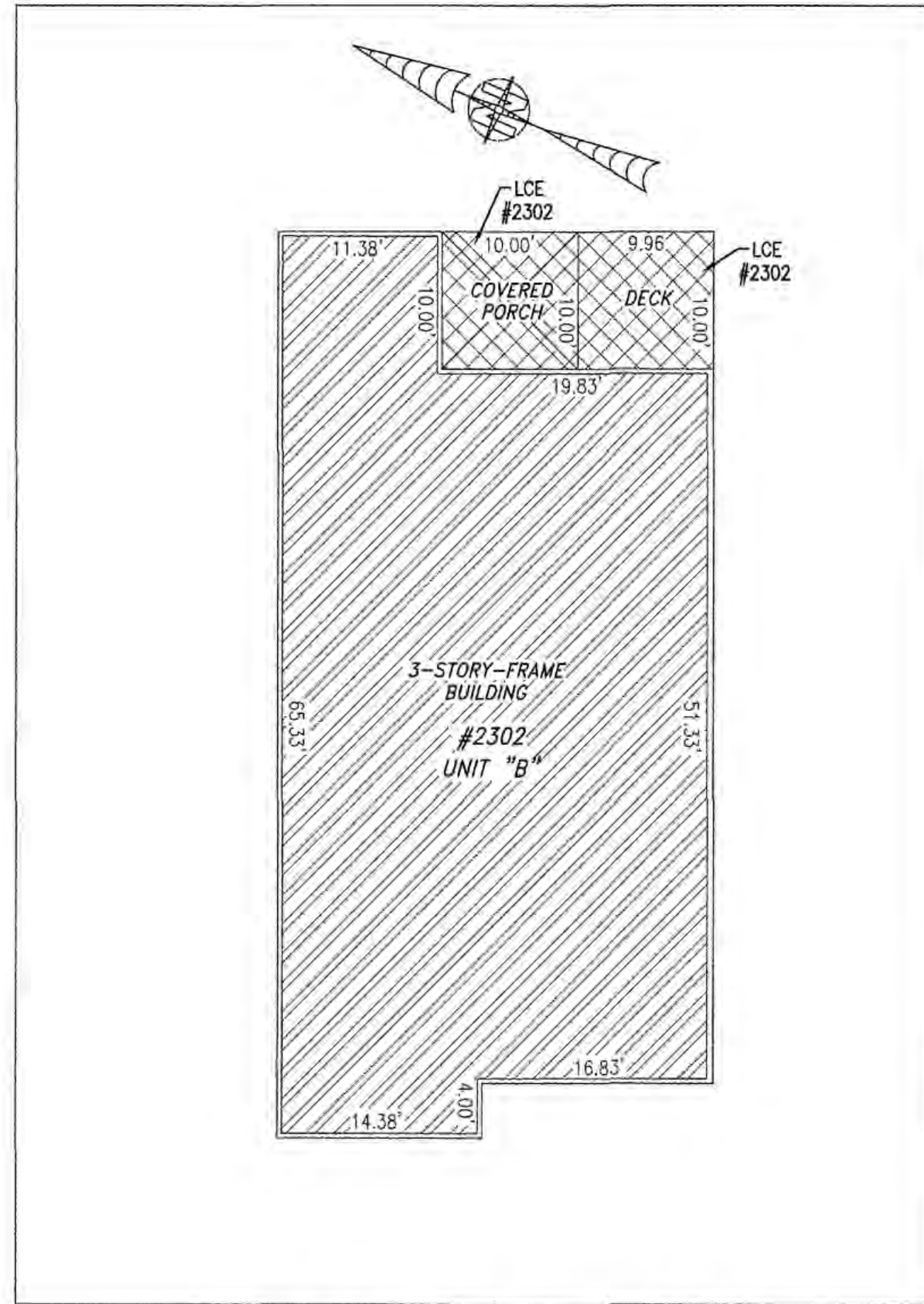


180001768

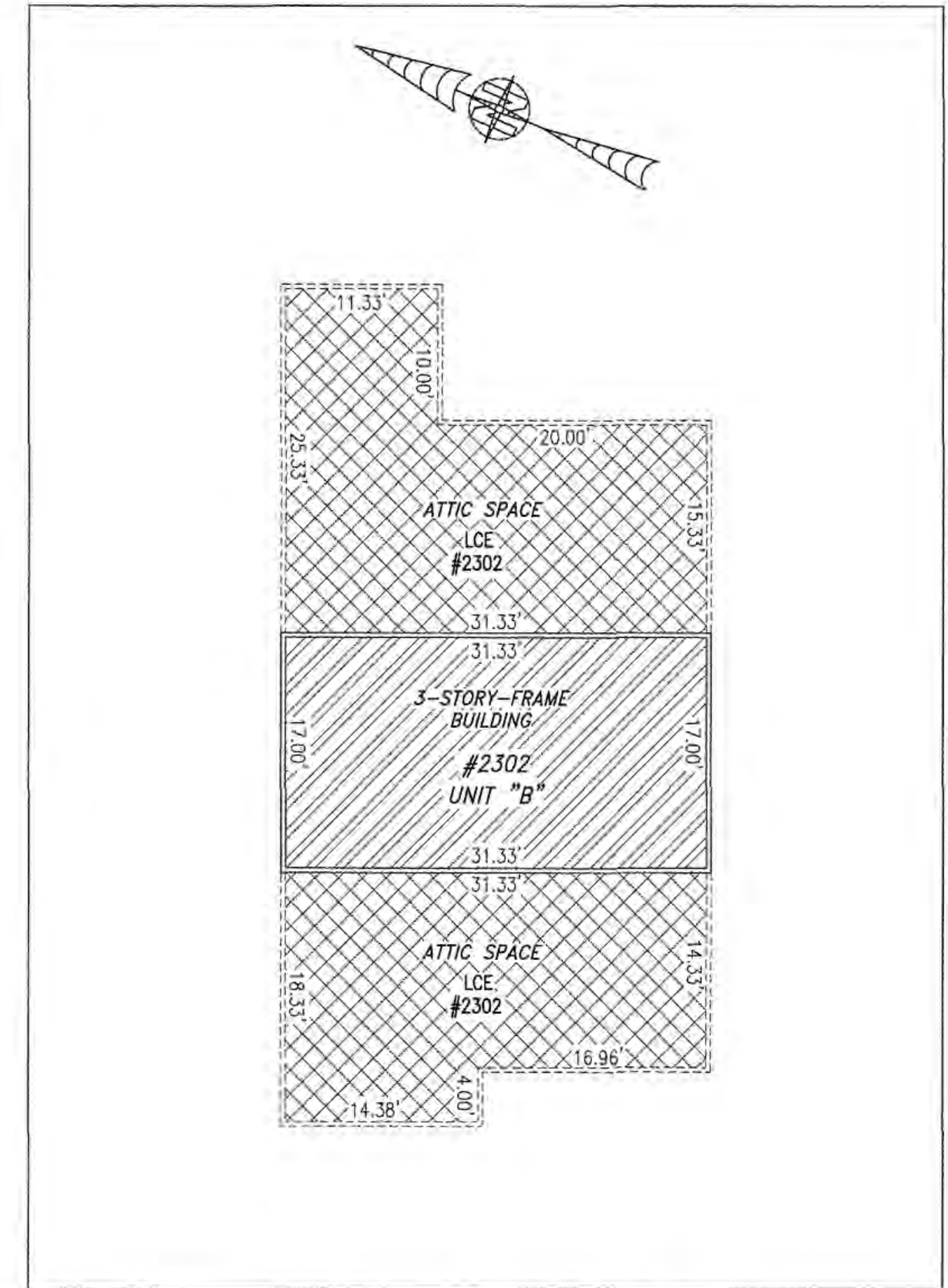
BUILDING 23 (DUPLEX)



FIRST FLOOR



SECOND FLOOR



THIRD FLOOR

UNIT ID	UNIT DESCRIPTION	UNIT ADDRESS
A	-INDICATES AREA OF UNIT 2301	#2301 QUEEN'S PATH
B	-INDICATES AREA OF UNIT 2302	#2302 QUEEN'S PATH
	-INDICATES COMMON ELEMENT	
	-INDICATES LIMITED COMMON ELEMENT	

I HEREBY CERTIFY THAT THIS PLAN IS ACCURATE AND THAT IT COMPLIES WITH THE PROVISIONS OF THE CODE OF VIRGINIA OF 1950 AS AMENDED, § 55-79.58 AND I FURTHER CERTIFY THAT ALL UNITS THEREOF DEPICTED HEREON, PURSUANT TO THE CODE OF VIRGINIA § 55-79.58B, ARE SUBSTANTIALLY COMPLETE.

5 Large/Small Plat(s) Recorded
herewith as # 180001768

City of Williamsburg & County of James City
Circuit Court: This PLAT was recorded on
23 Jan 2018
at 9:13 AM/PM, PB PG
Document # 180001768
MONA A. FOLEY, CLERK

Mona A. Foley, Clerk
Jeanne Swafford D.C.

0 10 20 30 FEET
GRAPHIC SCALE: 1" = 10'

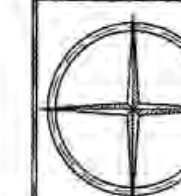


JCC Subdivision Agent *EGC*
Approval Not Required

THIS SHEET: FLOOR PLANS

PHASE 23
CONDOMINIUM PLAT AND PLAN
OF
THE PROMENADE
AT
JOHN TYLER
A CONDOMINIUM
JAMES CITY COUNTY, VIRGINIA

Jo# 160921



Hayden Frye and Associates, Inc.
Land Surveyors

333 KELLAM ROAD, SUITE 200
VIRGINIA BEACH, VA, 23462
PH: (757) 491-7228 FX: (757) 491-7229

DATE: JANUARY 9, 2018

SCALE: 1"=10'

SHEET 5 OF 5 THIS PHASE