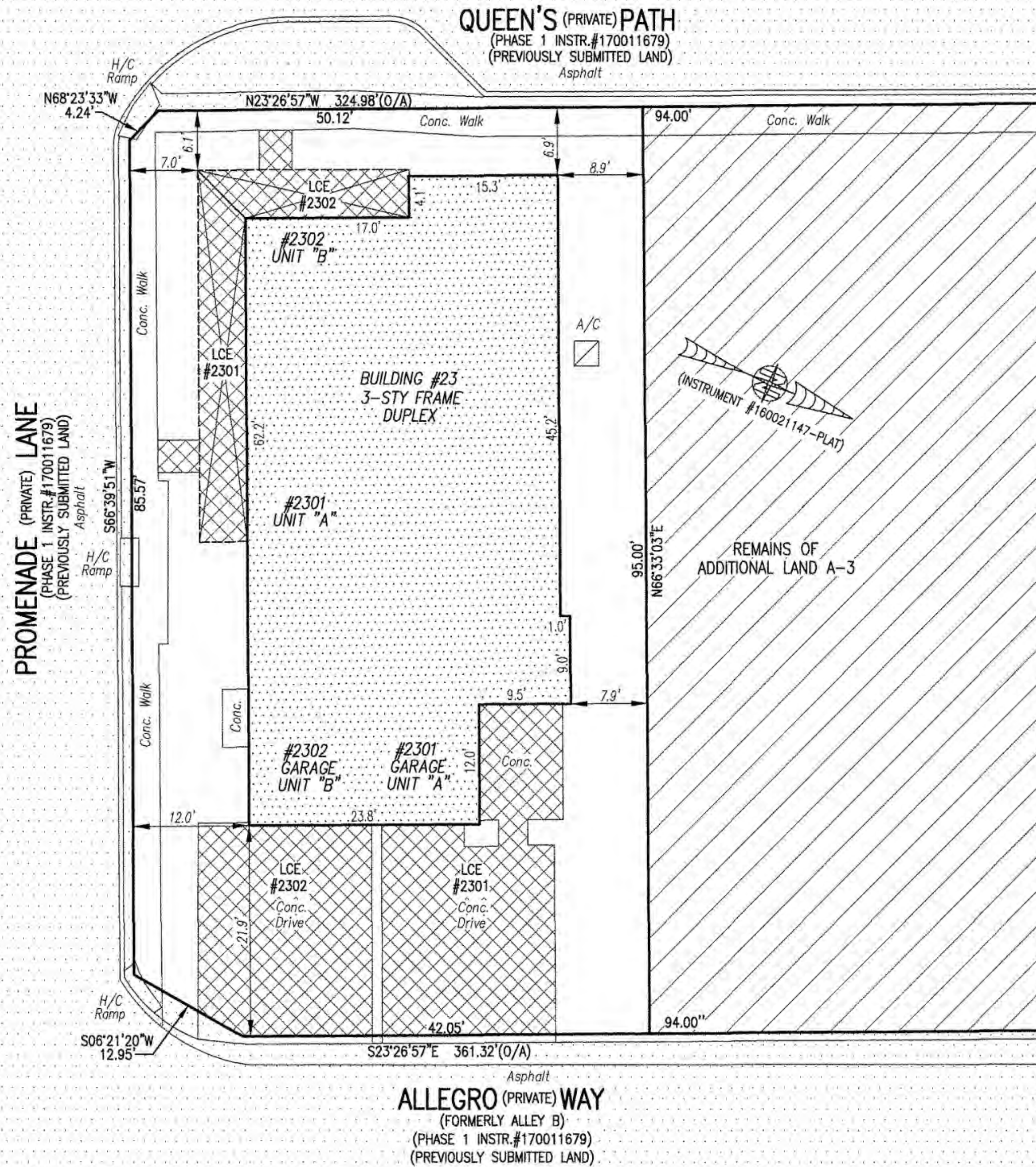


180001768

I HEREBY CERTIFY THAT THIS PLAT IS ACCURATE AND THAT IT COMPLIES WITH THE PROVISIONS OF THE CODE OF VIRGINIA OF 1950 AS AMENDED, § 55-79.58 AND I FURTHER CERTIFY THAT ALL IMPROVEMENTS THEREOF DEPICTED HEREON, PURSUANT TO THE CODE OF VIRGINIA § 55-79.58A, ARE NOT YET COMPLETED.



- INDICATES PREVIOUSLY SUBMITTED LAND
 - INDICATES BUILDING AREA (SEE PLANS FOR UNIT DIMENSIONS)
 - INDICATES LIMITED COMMON ELEMENT (LCE) ASSIGNED TO A UNIT # UNIT ASSIGNED
 - INDICATES COMMON ELEMENT (EXCLUDING AREAS OUTSIDE SUBMITTED LAND)
 - INDICATES ADDITIONAL LAND
- LCE #1000 (EXAMPLE UNIT #)

5 Large/Small Plat(s) Recorded herewith as # 180001768

City of Williamsburg & County of James City Circuit Court: This PLAT was recorded on 23 Jan 2018

at 9:13 AM/PM, PB PG

Document # 180001768

MONA A. FOLEY, CLERK

Mona A. Foley, Clerk

Jeanne Swafford D.C.

THIS SHEET: BUILDING DETAIL

PHASE 23
CONDOMINIUM PLAT AND PLAN
 OF
THE PROMENADE
 AT
JOHN TYLER
 A CONDOMINIUM
 JAMES CITY COUNTY, VIRGINIA

Jo# 160921



Hayden Frye and Associates, Inc.
Land Surveyors

333 KELLAM ROAD, SUITE 200
 VIRGINIA BEACH, VA., 23462
 PH: (757) 491-7228 FX: (757) 491-7229

DATE: JANUARY 9, 2018

SCALE: 1"=10'

SHEET 3 OF 5 THIS PHASE

JCC Subdivision Agent *EGC*
 Approval Not Required

