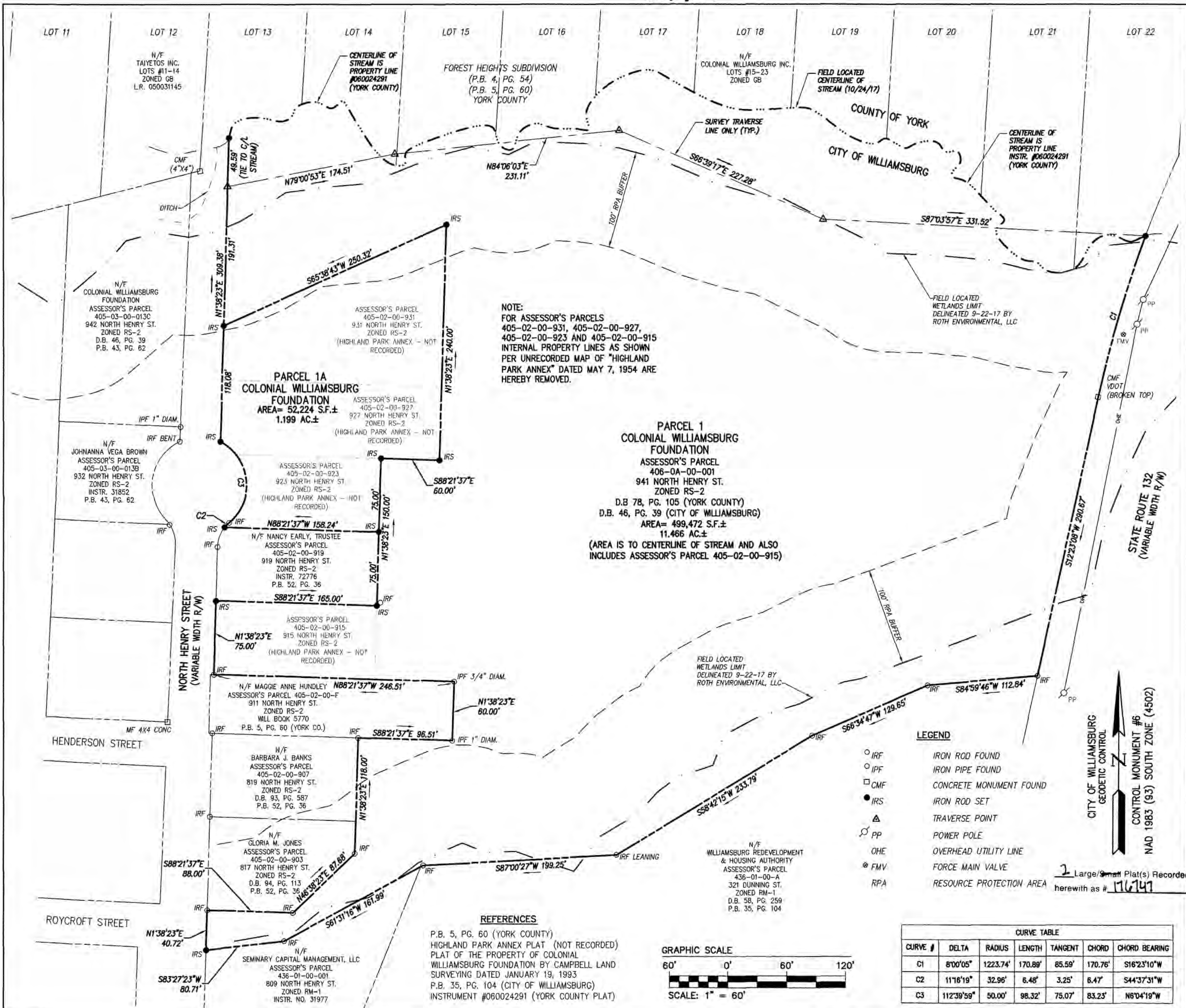


176747



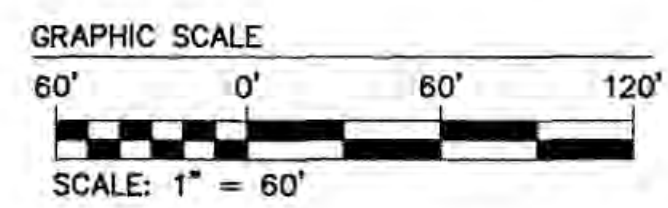
NOTE:
FOR ASSESSOR'S PARCELS 405-02-00-931, 405-02-00-927, 405-02-00-923 AND 405-02-00-915 INTERNAL PROPERTY LINES AS SHOWN PER UNRECORDED MAP OF "HIGHLAND PARK ANNEX" DATED MAY 7, 1954 ARE HEREBY REMOVED.

PARCEL 1
COLONIAL WILLIAMSBURG FOUNDATION
ASSESSOR'S PARCEL 406-0A-00-001
941 NORTH HENRY ST.
ZONED RS-2
D.B. 78, PG. 105 (YORK COUNTY)
AREA= 499,472 S.F.±
11.466 AC.±
(AREA IS TO CENTERLINE OF STREAM AND ALSO INCLUDES ASSESSOR'S PARCEL 405-02-00-915)

PARCEL 1A
COLONIAL WILLIAMSBURG FOUNDATION
AREA= 52,224 S.F.±
1.199 AC.±

- LEGEND**
- IRF IRON ROD FOUND
 - IPF IRON PIPE FOUND
 - CMF CONCRETE MONUMENT FOUND
 - IRS IRON ROD SET
 - △ TRAVERSE POINT
 - PP POWER POLE
 - OHE OVERHEAD UTILITY LINE
 - FMV FORCE MAIN VALVE
 - RPA RESOURCE PROTECTION AREA

REFERENCES
P.B. 5, PG. 60 (YORK COUNTY)
HIGHLAND PARK ANNEX PLAT (NOT RECORDED)
PLAT OF THE PROPERTY OF COLONIAL WILLIAMSBURG FOUNDATION BY CAMPBELL LAND SURVEYING DATED JANUARY 19, 1993
P.B. 35, PG. 104 (CITY OF WILLIAMSBURG)
INSTRUMENT #060024291 (YORK COUNTY PLAT)



CURVE TABLE						
CURVE #	DELTA	RADIUS	LENGTH	TANGENT	CHORD	CHORD BEARING
C1	8°00'05"	1223.74'	170.89'	85.59'	170.76'	S16°23'10"W
C2	11°16'19"	32.96'	6.48'	3.25'	6.47'	S44°37'31"W
C3	112°39'59"	50.00'	98.32'	75.07'	83.23'	N6°04'19"W

City of Williamsburg & County of James City
Circuit Court: This PLAT was recorded on
December 20, 2017
at 12:47 PM, PB PG
Document # **176747**
MONA A. FOLEY, CLERK
Clerk
J. G. ...
Lic. No. 003130



AES
CONSULTING ENGINEERS
Hampton Roads | Central Virginia | Middle Peninsula

5248 Old Towne Road, Suite 1
Williamsburg, Virginia 23188
Phone: (757) 255-0040
Fax: (757) 220-8994
www.aesva.com

PLAT OF SUBDIVISION
PROPERTY OWNED BY
THE COLONIAL WILLIAMSBURG FOUNDATION
BEING A TOTAL OF 12.865 AC.±
ON NORTH HENRY STREET
CITY OF WILLIAMSBURG VIRGINIA