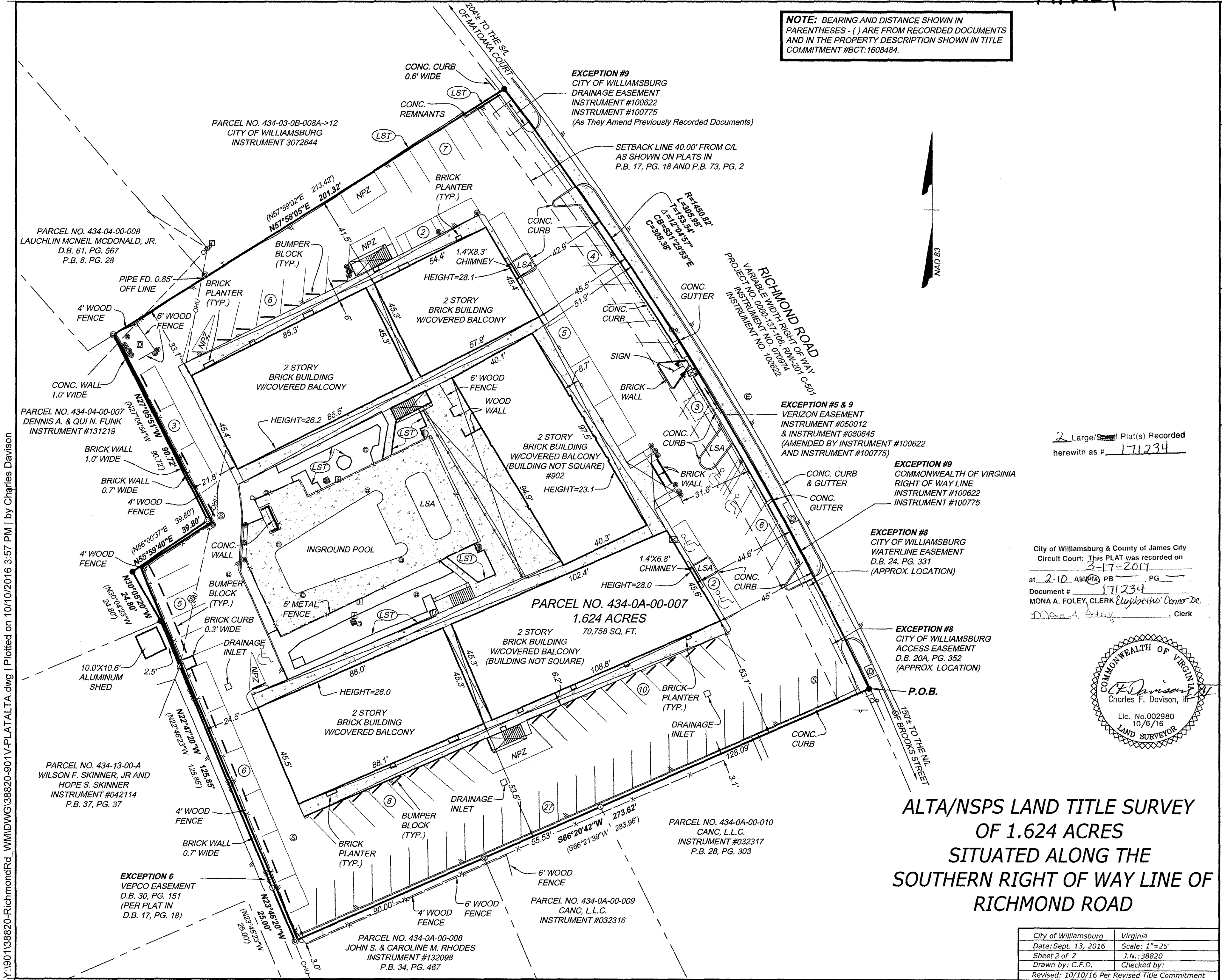


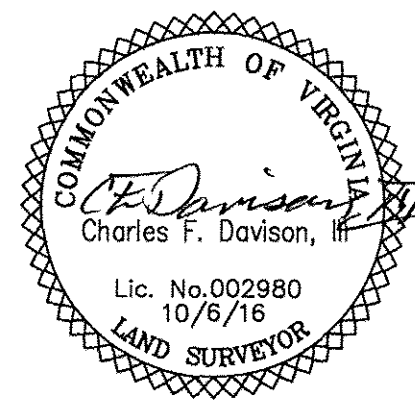
171234

NOTE: BEARING AND DISTANCE SHOWN IN PARENTHESES - () ARE FROM RECORDED DOCUMENTS AND IN THE PROPERTY DESCRIPTION SHOWN IN TITLE COMMITMENT #BCT.1608484.



2 Large/Small Plat(s) Recorded herewith as # 171234

City of Williamsburg & County of James City
 Circuit Court: This PLAT was recorded on
 3-17-2017
 at 2:10 AM PM PG
 Document # 171234
 MONA A. FOLEY, CLERK Elizabeth Connor, DC
 Clerk



**ALTA/NSPS LAND TITLE SURVEY
 OF 1.624 ACRES
 SITUATED ALONG THE
 SOUTHERN RIGHT OF WAY LINE OF
 RICHMOND ROAD**

City of Williamsburg	Virginia
Date: Sept. 13, 2016	Scale: 1"=25'
Sheet 2 of 2	J.N.: 38820
Drawn by: C.F.D.	Checked by:
Revised: 10/10/16 Per Revised Title Commitment	

Y:\901138820-RichmondRd_WMWDWG\38820-901V-PLAT\ALTA.dwg | Plotted on 10/10/2016 3:57 PM | by Charles Davison

THIS DRAWING PREPARED AT THE
CORPORATE OFFICE
 1001 Boulders Parkway, Suite 300 | Richmond, VA 23225
 TEL: 804.200.6500 FAX: 804.560.1016 www.timmons.com

YOUR VISION ACHIEVED THROUGH OURS.

Site Development Residential Infrastructure Technology

TIMMONS GROUP