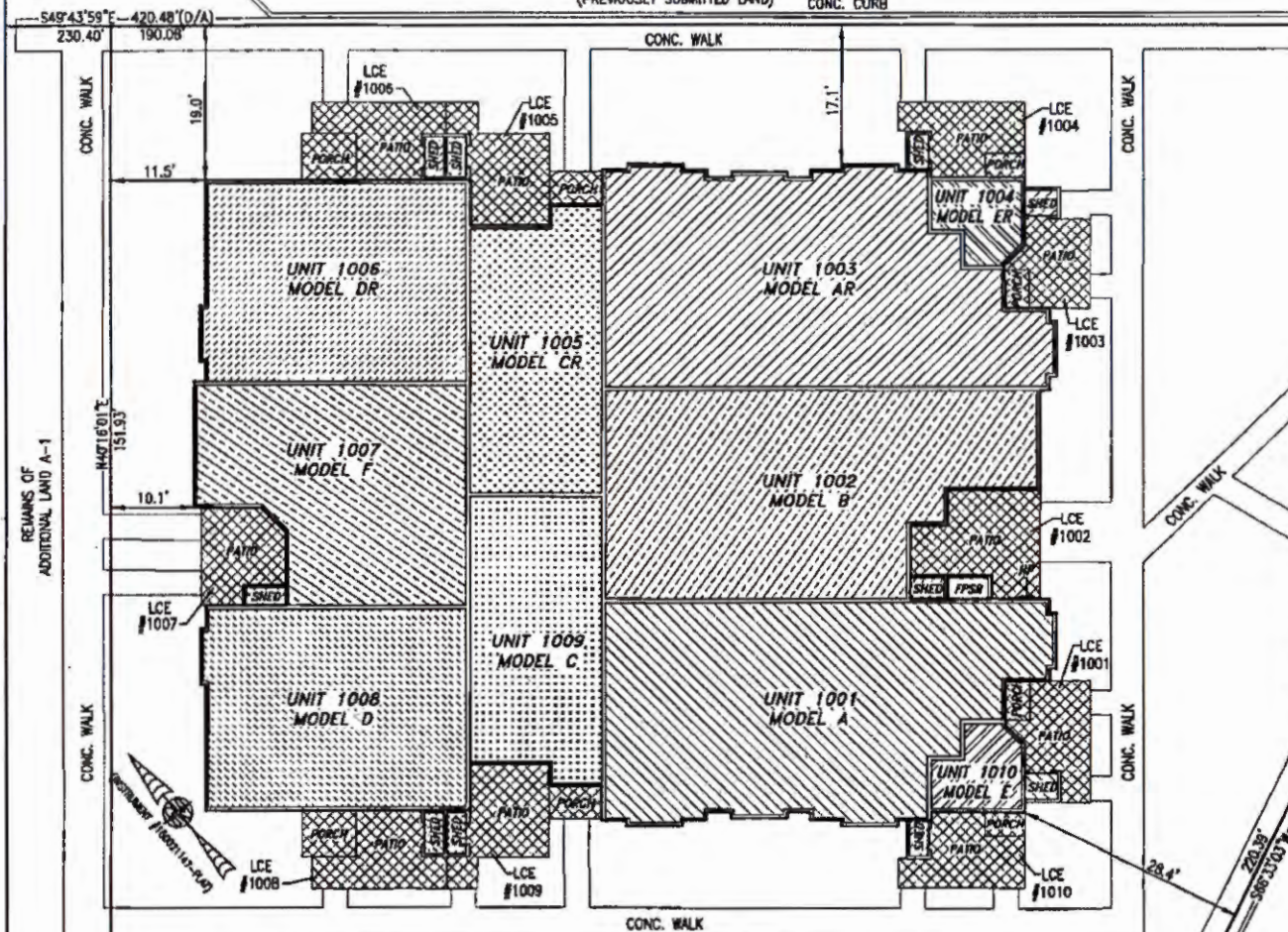


KING'S LAND (PRIVATE) COURT

(PHASE 1 INSTR. #170011679)
(PREVIOUSLY SUBMITTED LAND)

I HEREBY CERTIFY THAT THIS PLAN IS ACCURATE AND THAT IT COMPLIES WITH THE PROVISIONS OF THE CODE OF VIRGINIA OF 1950 AS AMENDED, § 55-79.5B AND I FURTHER CERTIFY THAT ALL IMPROVEMENTS THEREOF DEPICTED HEREON, PURSUANT TO THE CODE OF VIRGINIA § 55-79.5BA, ARE ARE NOT YET COMPLETED.



UNIT ID	UNIT DESCRIPTION	UNIT ADDRESS	PARKING SPACE
A	-INDICATES AREA OF UNIT 1001	#1001 KING'S LAND CT.	181
B	-INDICATES AREA OF UNIT 1002	#1002 KING'S LAND CT.	182
AR	-INDICATES AREA OF UNIT 1003	#1003 KING'S LAND CT.	183
ER	-INDICATES AREA OF UNIT 1004	#1004 KING'S LAND CT.	186
CR	-INDICATES AREA OF UNIT 1005	#1005 KING'S LAND CT.	187
DR	-INDICATES AREA OF UNIT 1006	#1006 KING'S LAND CT.	171
F	-INDICATES AREA OF UNIT 1007	#1007 KING'S LAND CT.	174
D	-INDICATES AREA OF UNIT 1008	#1008 KING'S LAND CT.	172
C	-INDICATES AREA OF UNIT 1009	#1009 KING'S LAND CT.	173
E	-INDICATES AREA OF UNIT 1010	#1010 KING'S LAND CT.	175
HP	HOUSE PANEL (ELECTRIC)	#1011 KING'S LAND CT.	N/A
FPSR	FIRE PROTECTION SPRINKLER ROOM	#1012 KING'S LAND CT.	N/A
	-INDICATES COMMON ELEMENT (EXCLUDING AREAS OUTSIDE OF SUBMITTED LAND)		
	-INDICATES LIMITED COMMON ELEMENT (LCE) ASSIGNED TO A UNIT. # UNIT ASSIGNED		

*NOTE: PARKING SPACES NOT CONSTRUCTED AT TIME OF SURVEY.

THIS SHEET: BUILDING DETAIL

PHASE 10
CONDOMINIUM PLAT AND PLAN
OF
THE PROMENADE
AT
JOHN TYLER
A CONDOMINIUM
JAMES CITY COUNTY, VIRGINIA

July 160021

Hayden Frye and Associates, Inc.
Land Surveyors



300 KELLAM ROAD, SUITE 200
VIRGINIA BEACH, VA 23462
PH: (757) 491-2224 FAX: (757) 491-2221

DATE: NOVEMBER 28, 2017
SCALE: 1"=10'
SHEET 3 OF 5 THIS PHASE



170023466-07