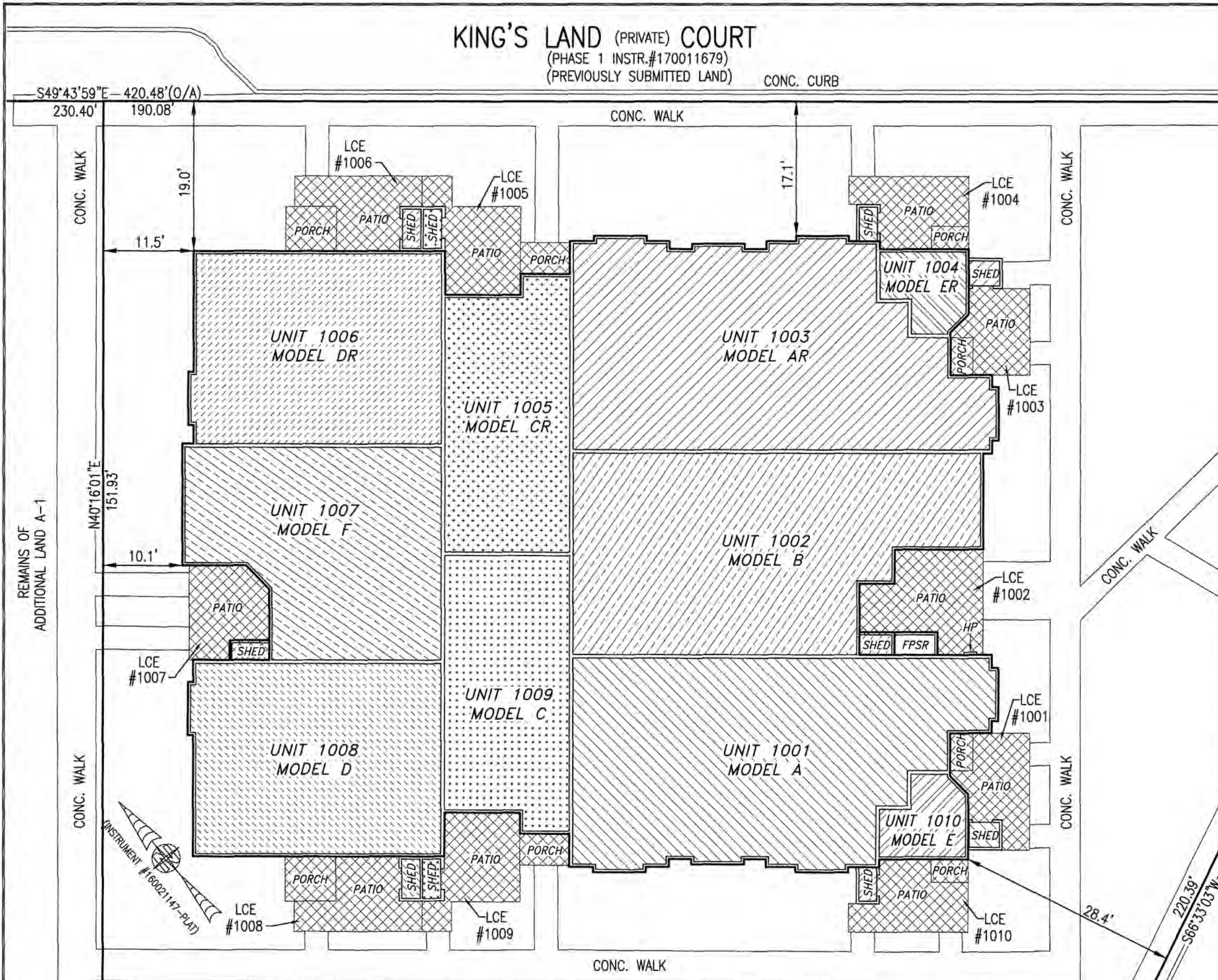
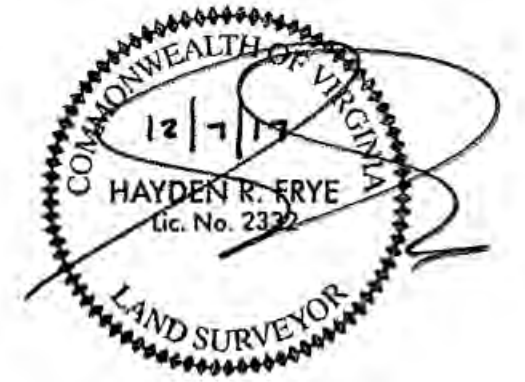


170023466

KING'S LAND (PRIVATE) COURT
 (PHASE 1 INSTR.#170011679)
 (PREVIOUSLY SUBMITTED LAND) CONC. CURB

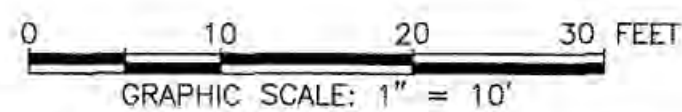
I HEREBY CERTIFY THAT THIS PLAT IS ACCURATE AND THAT IT COMPLIES WITH THE PROVISIONS OF THE CODE OF VIRGINIA OF 1950 AS AMENDED, § 55-79.58 AND I FURTHER CERTIFY THAT ALL IMPROVEMENTS THEREOF DEPICTED HEREON, PURSUANT TO THE CODE OF VIRGINIA § 55-79.58A, ARE NOT YET COMPLETED.



UNIT ID	UNIT DESCRIPTION	UNIT ADDRESS	PARKING SPACE
A	-INDICATES AREA OF UNIT 1001	#1001 KING'S LAND CT.	181
B	-INDICATES AREA OF UNIT 1002	#1002 KING'S LAND CT.	182
AR	-INDICATES AREA OF UNIT 1003	#1003 KING'S LAND CT.	183
ER	-INDICATES AREA OF UNIT 1004	#1004 KING'S LAND CT.	186
CR	-INDICATES AREA OF UNIT 1005	#1005 KING'S LAND CT.	187
DR	-INDICATES AREA OF UNIT 1006	#1006 KING'S LAND CT.	171
F	-INDICATES AREA OF UNIT 1007	#1007 KING'S LAND CT.	174
D	-INDICATES AREA OF UNIT 1008	#1008 KING'S LAND CT.	172
C	-INDICATES AREA OF UNIT 1009	#1009 KING'S LAND CT.	173
E	-INDICATES AREA OF UNIT 1010	#1010 KING'S LAND CT.	175
HP	HOUSE PANEL (ELECTRIC)	#1011 KING'S LAND CT.	N/A
FPSR	FIRE PROTECTION SPRINKLER ROOM	#1012 KING'S LAND CT.	N/A
	-INDICATES COMMON ELEMENT (EXCLUDING AREAS OUTSIDE OF SUBMITTED LAND)		
	-INDICATES LIMITED COMMON ELEMENT (LCE) ASSIGNED TO A UNIT. # UNIT ASSIGNED		

*NOTE: PARKING SPACES NOT CONSTRUCTED AT TIME OF SURVEY.

5 Large/Small Plat(s) Recorded
 herewith as # 170023466
 City of Williamsburg & County of James City
 Circuit Court: This PLAT was recorded on
 12-12-2017
 at 11:04 AM/PM, PB PG
 Document # 170023466
 MONA A. FOLEY, CLERK
Mona A. Foley, Clerk



JCC Subdivision Agent
 Approval Not Required *EGR*

THIS SHEET: BUILDING DETAIL

PHASE 10
CONDOMINIUM PLAT AND PLAN
 OF
THE PROMENADE
 AT
JOHN TYLER
 A CONDOMINIUM
 JAMES CITY COUNTY, VIRGINIA

Jo# 160921



Hayden Frye and Associates, Inc.

Land Surveyors

333 KELLAM ROAD, SUITE 200
 VIRGINIA BEACH, VA, 23462
 PH: (757) 491-7228 FX: (757) 491-7229

DATE: NOVEMBER 28, 2017

SCALE: 1"=10'

SHEET 3 OF 5 THIS PHASE

FARRINGTON WAY
 (PHASE 1 INSTR.#170011679)
 (PREVIOUSLY SUBMITTED LAND)