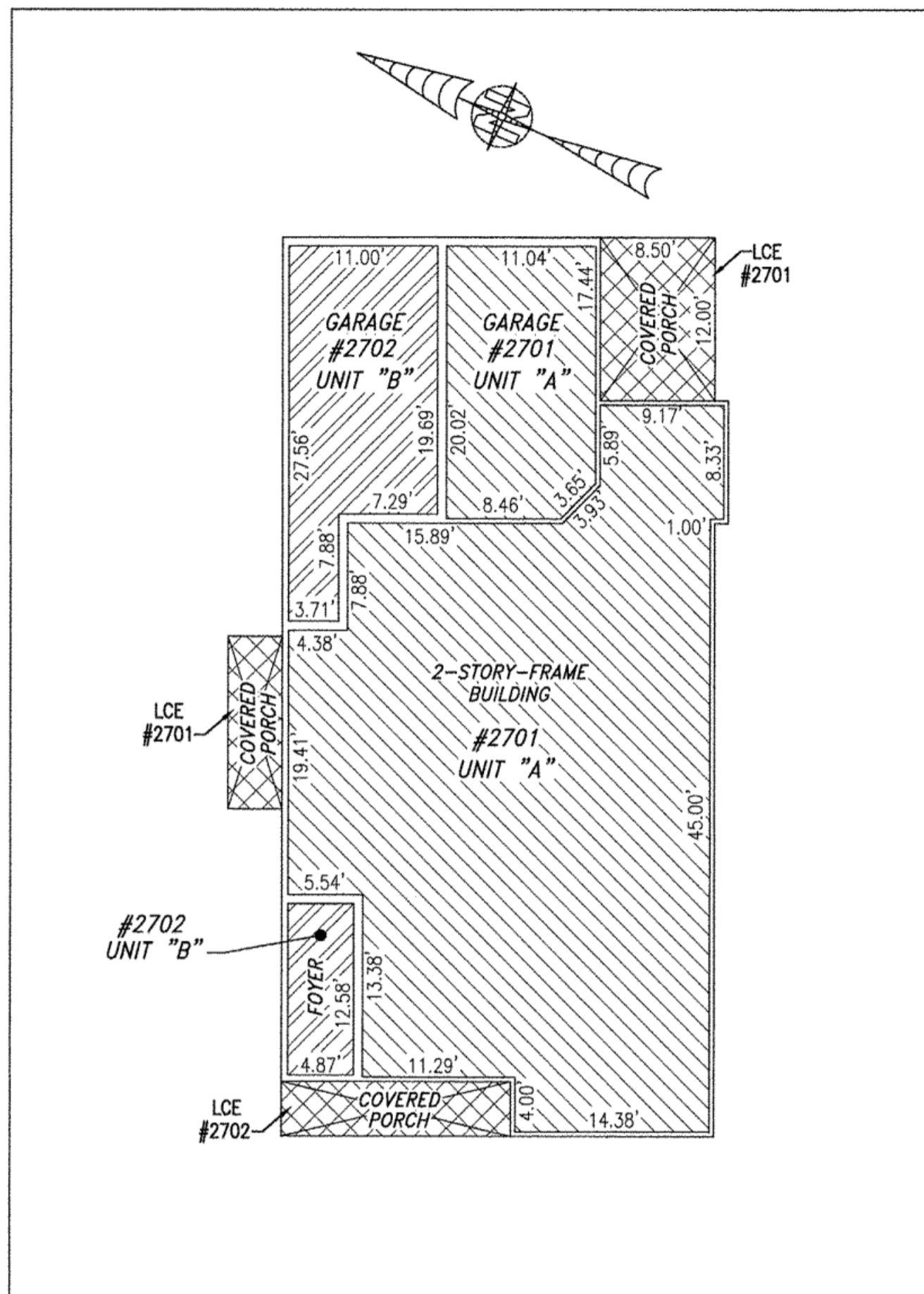
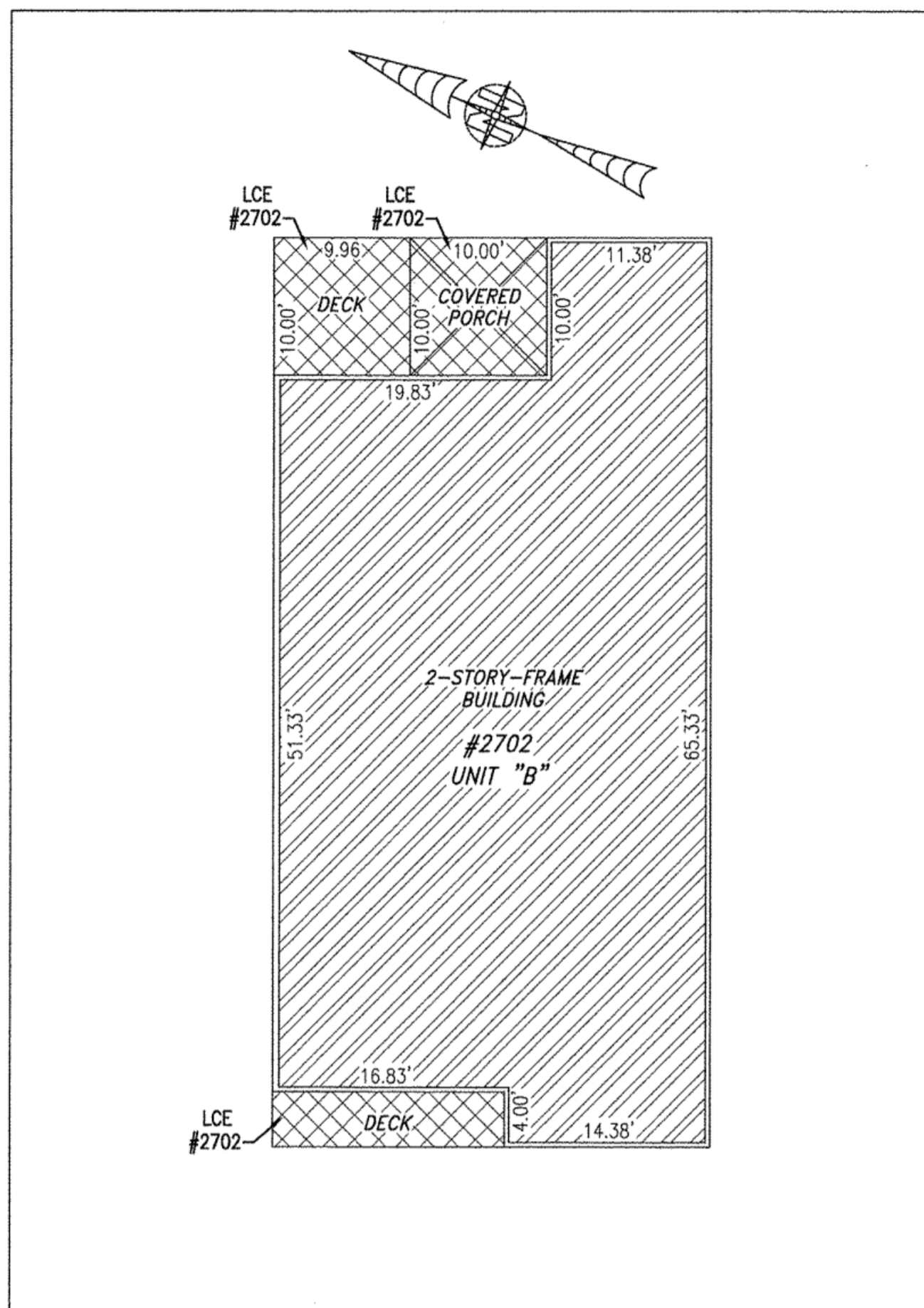


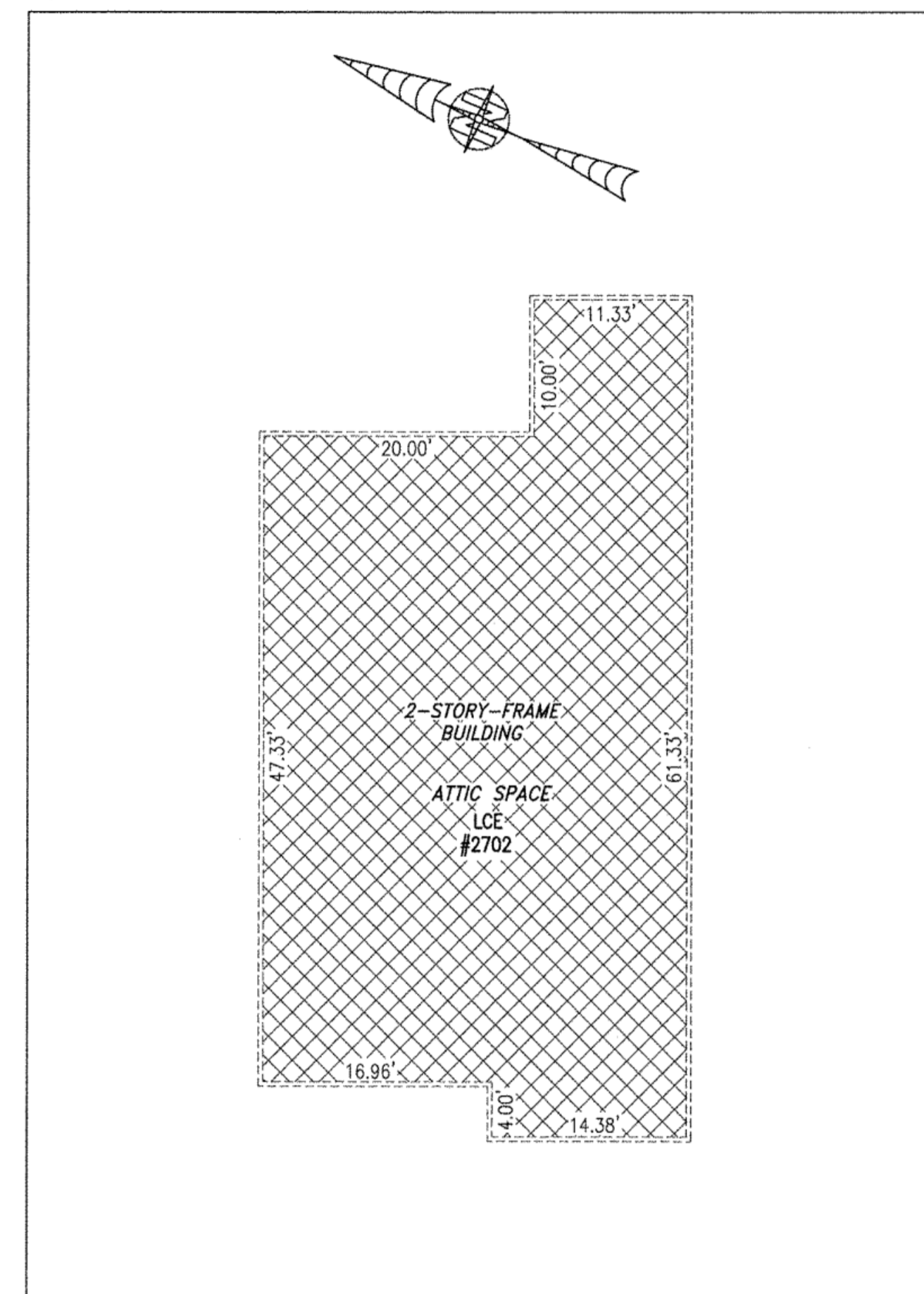
BUILDING 27 (DUPLEX)



FIRST FLOOR



SECOND FLOOR



ATTIC SPACE

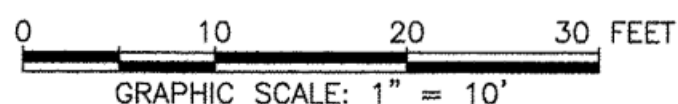
City of Williamsburg & County of James City
 Circuit Court: This PLAT was recorded on
11-7-2017
 at 3:15 AM/PM, PB PG
 Document # 170021157
 MONA A. FOLEY, CLERK
Mona A. Foley, Clerk

Elizabeth O'Connor DC
 5 Large/Small Plat(s) Recorded
 herewith as # 170021157

I HEREBY CERTIFY THAT THIS PLAN IS ACCURATE AND THAT IT COMPLIES WITH THE PROVISIONS OF THE CODE OF VIRGINIA OF 1950 AS AMENDED, § 55-79.58 AND I FURTHER CERTIFY THAT ALL UNITS THEREOF DEPICTED HEREON, PURSUANT TO THE CODE OF VIRGINIA § 55-79.58B, ARE SUBSTANTIALLY COMPLETE.



UNIT ID	UNIT DESCRIPTION	UNIT ADDRESS
A	-INDICATES AREA OF UNIT 2701	#2701 QUEEN'S PATH
B	-INDICATES AREA OF UNIT 2702	#2702 QUEEN'S PATH
	-INDICATES COMMON ELEMENT	
	-INDICATES LIMITED COMMON ELEMENT	



JCC Subdivision Agent *EGC*
 Approval Not Required

THIS SHEET: FLOOR PLANS

PHASE 27
CONDOMINIUM PLAT AND PLAN
 OF
THE PROMENADE
 AT
JOHN TYLER
 A CONDOMINIUM
 JAMES CITY COUNTY, VIRGINIA

Jo# 160921



Hayden Frye and Associates, Inc.
Land Surveyors
 333 KELLAM ROAD, SUITE 200
 VIRGINIA BEACH, VA., 23462
 PH: (757) 491-7228 FX:(757) 491-7229

DATE: OCTOBER 25, 2017
 SCALE: 1"=10'
 SHEET 5 OF 5 THIS PHASE