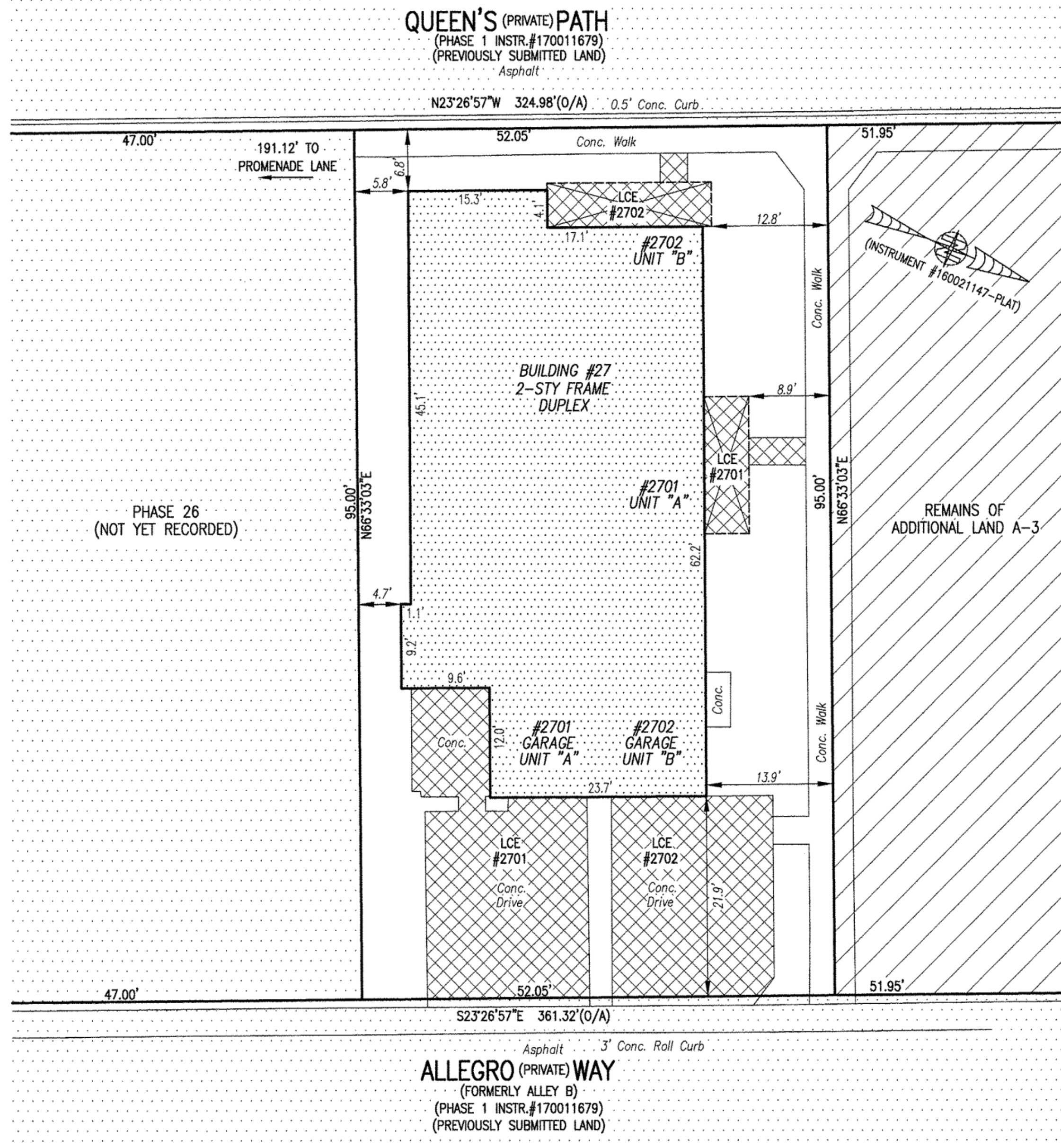


I HEREBY CERTIFY THAT THIS PLAT IS ACCURATE AND THAT IT COMPLIES WITH THE PROVISIONS OF THE CODE OF VIRGINIA OF 1950 AS AMENDED, § 55-79.58 AND I FURTHER CERTIFY THAT ALL IMPROVEMENTS THEREOF DEPICTED HEREON, PURSUANT TO THE CODE OF VIRGINIA § 55-79.58A, ARE NOT YET COMPLETED.



- INDICATES PREVIOUSLY SUBMITTED LAND
- INDICATES BUILDING AREA (SEE PLANS FOR UNIT DIMENSIONS)
- INDICATES LIMITED COMMON ELEMENT (LCE) ASSIGNED TO A UNIT # UNIT ASSIGNED
- INDICATES COMMON ELEMENT (EXCLUDING AREAS OUTSIDE SUBMITTED LAND)
- INDICATES ADDITIONAL LAND

5 Large/Small Plat(s) Recorded herewith as # 170021157

City of Williamsburg & County of James City Circuit Court: This PLAT was recorded on 11-7-2017 at 3:15 AM (PM) PG Document # 170021157 MONA A. FOLEY, CLERK
Mona A. Foley, Clerk
 Elizabeth O'Connor DC

THIS SHEET: BUILDING DETAIL

PHASE 27
CONDOMINIUM PLAT AND PLAN
 OF
THE PROMENADE
 AT
JOHN TYLER
 A CONDOMINIUM
 JAMES CITY COUNTY, VIRGINIA

Jo# 160921
 Hayden Frye and Associates, Inc.
Land Surveyors
 333 KELLAM ROAD, SUITE 200
 VIRGINIA BEACH, VA., 23462
 PH: (757) 491-7228 FX: (757) 491-7229

JCC Subdivision Agent Approval Not Required

DATE: OCTOBER 25, 2017
 SCALE: 1"=10'
 SHEET 3 OF 5 THIS PHASE

