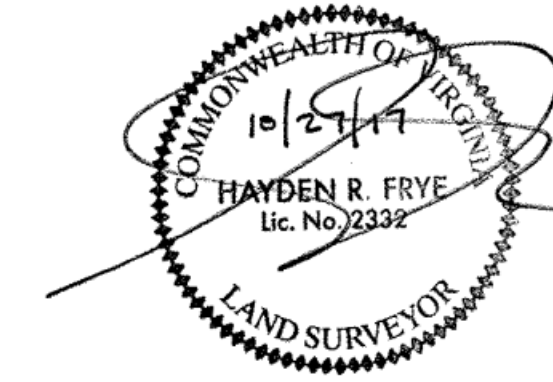


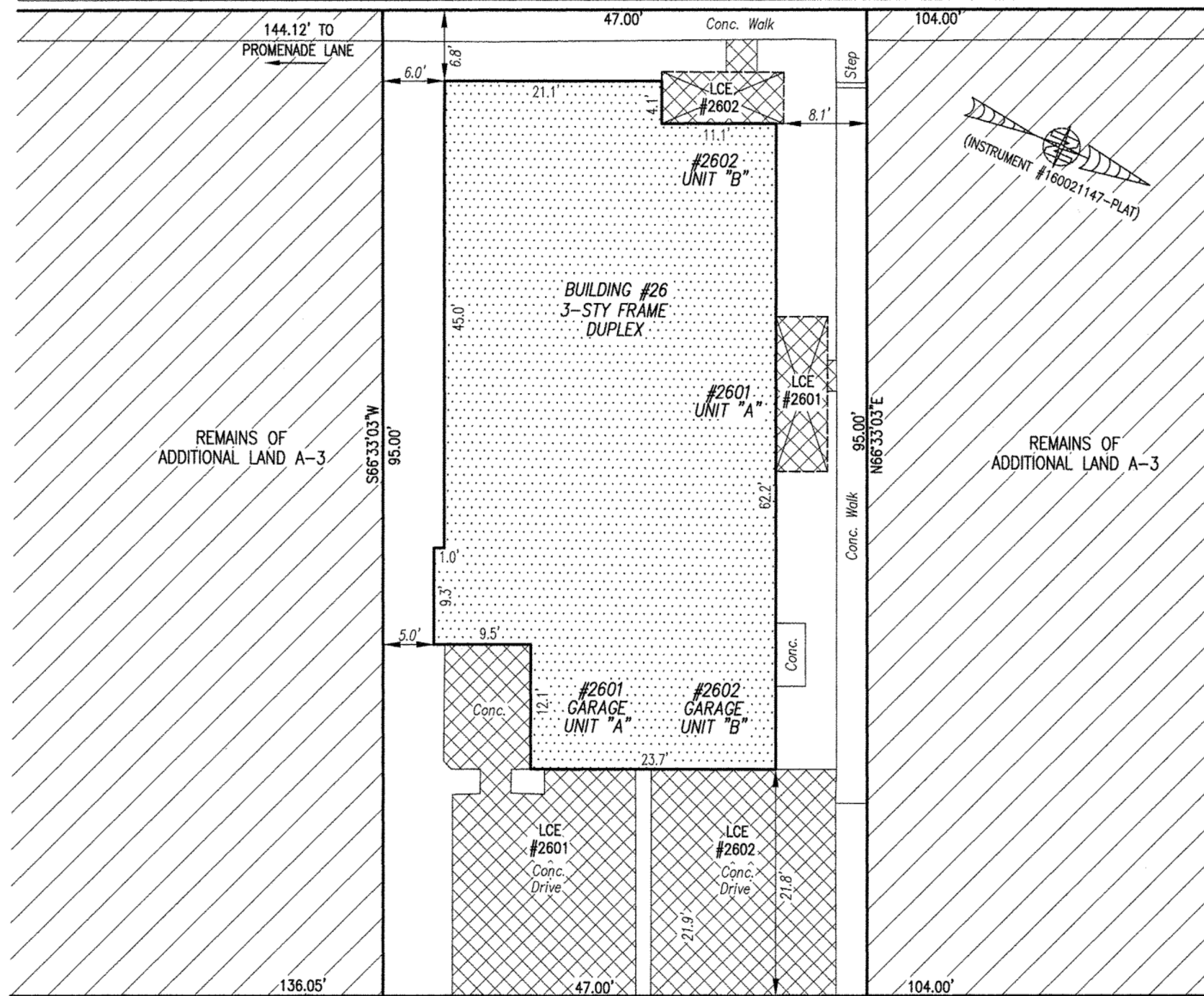
170021156

I HEREBY CERTIFY THAT THIS PLAT IS ACCURATE AND THAT IT COMPLIES WITH THE PROVISIONS OF THE CODE OF VIRGINIA OF 1950 AS AMENDED, § 55-79.58 AND I FURTHER CERTIFY THAT ALL IMPROVEMENTS THEREOF DEPICTED HEREON, PURSUANT TO THE CODE OF VIRGINIA § 55-79.58A, ARE NOT YET COMPLETED.



QUEEN'S (PRIVATE) PATH
(PHASE 1 INSTR.#170011679)
(PREVIOUSLY SUBMITTED LAND)
Asphalt.

N23°26'57"W 324.98'(O/A) 0.5' Conc. Curb.



- INDICATES PREVIOUSLY SUBMITTED LAND
- INDICATES BUILDING AREA (SEE PLANS FOR UNIT DIMENSIONS)
- INDICATES LIMITED COMMON ELEMENT (LCE) ASSIGNED TO A UNIT # UNIT ASSIGNED
- INDICATES COMMON ELEMENT (EXCLUDING AREAS OUTSIDE SUBMITTED LAND)
- INDICATES ADDITIONAL LAND

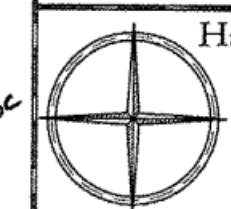
5 Large/5 Plat(s) Recorded
herewith as # 170021156

City of Williamsburg & County of James City
Circuit Court: This PLAT was recorded on
Nov. 7, 2017
at 3:16 AM/PM, PB -- PG --
Document # 170021156
MONA A. FOLEY, CLERK
Mona A. Foley, Clerk
Genet Z. Williams, DC.

THIS SHEET: BUILDING DETAIL

PHASE 26
CONDOMINIUM PLAT AND PLAN
OF
THE PROMENADE
AT
JOHN TYLER
A CONDOMINIUM
JAMES CITY COUNTY, VIRGINIA

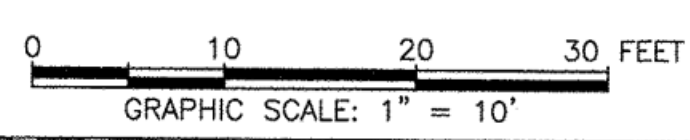
Jo# 160921



Hayden Frye and Associates, Inc.
Land Surveyors
333 KELLAM ROAD, SUITE 200
VIRGINIA BEACH, VA, 23462
PH: (757) 491-7228 FX:(757) 491-7229

DATE: OCTOBER 25, 2017
SCALE: 1"=10'
SHEET 3 OF 5 THIS PHASE

JCC Subdivision Agent Approval Not Required



ALLEGRO (PRIVATE) WAY
(FORMERLY ALLEY B)
(PHASE 1 INSTR.#170011679)
(PREVIOUSLY SUBMITTED LAND)

S23°26'57"E 361.32'(O/A)
Asphalt. 3' Conc. Roll Curb.