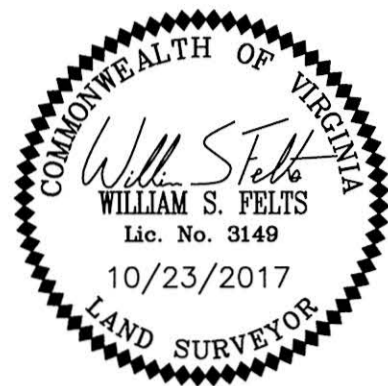


170020547

**SURVEYORS CERTIFICATE**

I HEREBY CERTIFY THAT THE PLAN PREVIOUSLY RECORDED FOR GOVERNOR'S GROVE AT FIVE FORKS, A CONDOMINIUM AT INSTRUMENT NO. 160009184 ACCURATELY DEPICTS THE UNIT AND RELATED IMPROVEMENTS SHOWN AND THAT THEY COMPLY WITH THE CODE OF VIRGINIA OF 1950, AS AMENDED §§55-79.58(B) AND ARE SUBSTANTIALLY COMPLETE.

I HEREBY CERTIFY THAT THIS PLAT IS ACCURATE AND THAT IT COMPLIES WITH THE CODE OF VIRGINIA OF 1950, AS AMENDED, §§55-79.58, AND I FURTHER CERTIFY THAT ALL IMPROVEMENTS OR PORTIONS THEREOF DEPICTED HEREON, PURSUANT TO THE CODE OF VIRGINIA, §§55-79.58(A), ARE SUBSTANTIALLY COMPLETE.



*William S. Felts*  
WILLIAM S. FELTS LIC. #3149  
10/23/17  
DATE

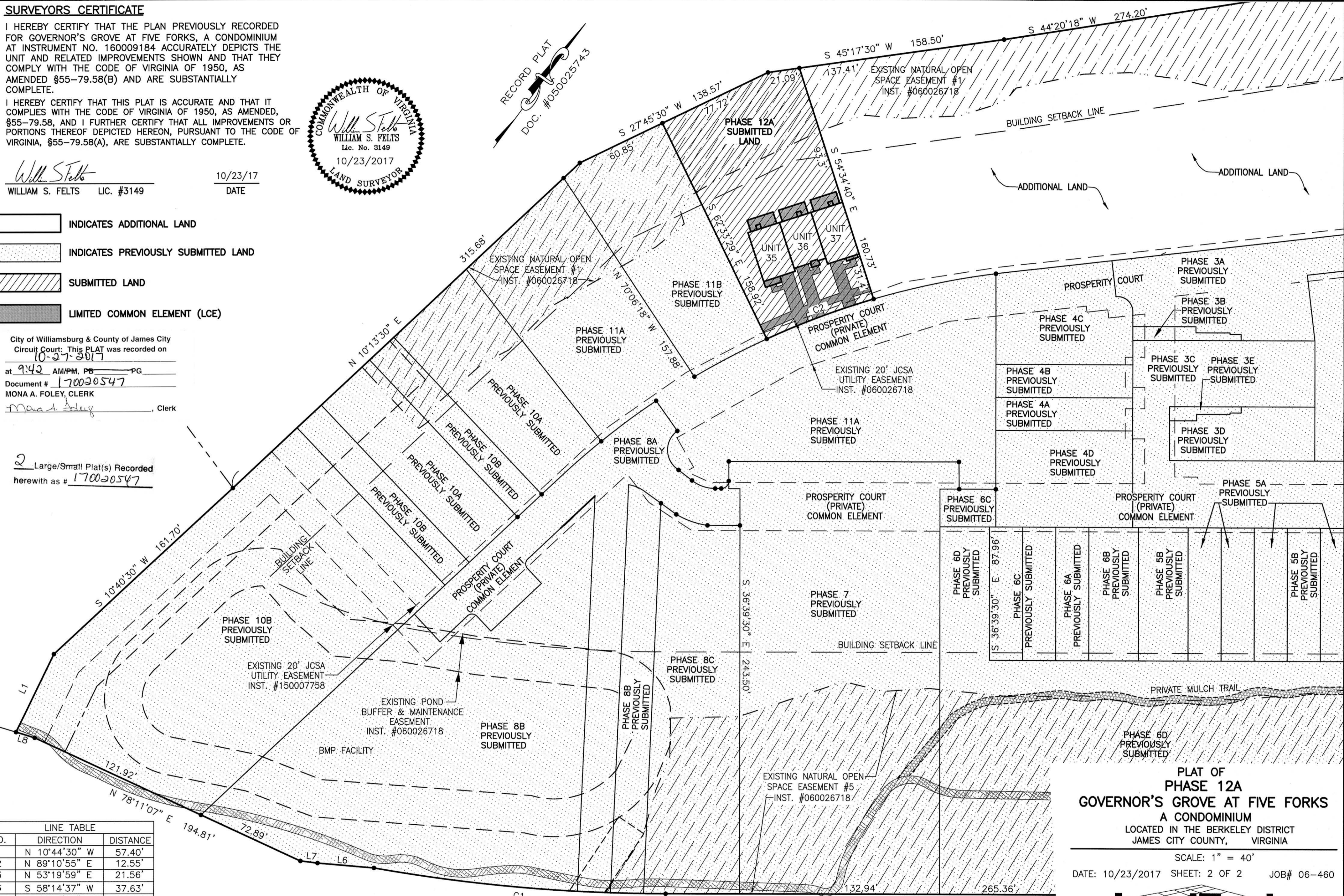
- INDICATES ADDITIONAL LAND
- INDICATES PREVIOUSLY SUBMITTED LAND
- SUBMITTED LAND
- LIMITED COMMON ELEMENT (LCE)

City of Williamsburg & County of James City  
Circuit Court: This PLAT was recorded on  
10-27-2017  
at 9:42 AM/PM, PG  
Document # 170020547  
MONA A. FOLEY, CLERK  
*Mona A. Foley*, Clerk

2 Large/Small Plat(s) Recorded  
herewith as # 170020547

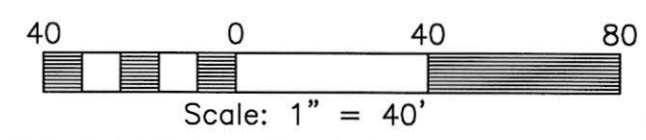
LINE TABLE		
NO.	DIRECTION	DISTANCE
L1	N 10°44'30" W	57.40'
L2	N 89°10'55" E	12.55'
L3	N 53°19'59" E	21.56'
L6	S 58°14'37" W	37.63'
L7	S 60°24'36" W	11.43'
L8	S 70°12'23" W	12.96'

CURVE TABLE					
NO.	DELTA	CHORD BEARING	RADIUS	ARC	CHORD
C2	8°18'14"	S 32°51'02" W	523.62'	75.89'	75.82'



JOHN TYLER HIGHWAY  
STATE ROUTE #5  
(VARIABLE WIDTH PUBLIC R/W)

JCC Subdivision Agent Approval Not Required



PLAT OF  
PHASE 12A  
GOVERNOR'S GROVE AT FIVE FORKS  
A CONDOMINIUM  
LOCATED IN THE BERKELEY DISTRICT  
JAMES CITY COUNTY, VIRGINIA

SCALE: 1" = 40'  
DATE: 10/23/2017 SHEET: 2 OF 2 JOB# 06-460



Engineering & Surveying Consultants  
3925 Midlands Road, Williamsburg, VA 23188  
Phone: (757) 565-1677 Fax: (757) 565-0782  
web: landtechresources.com