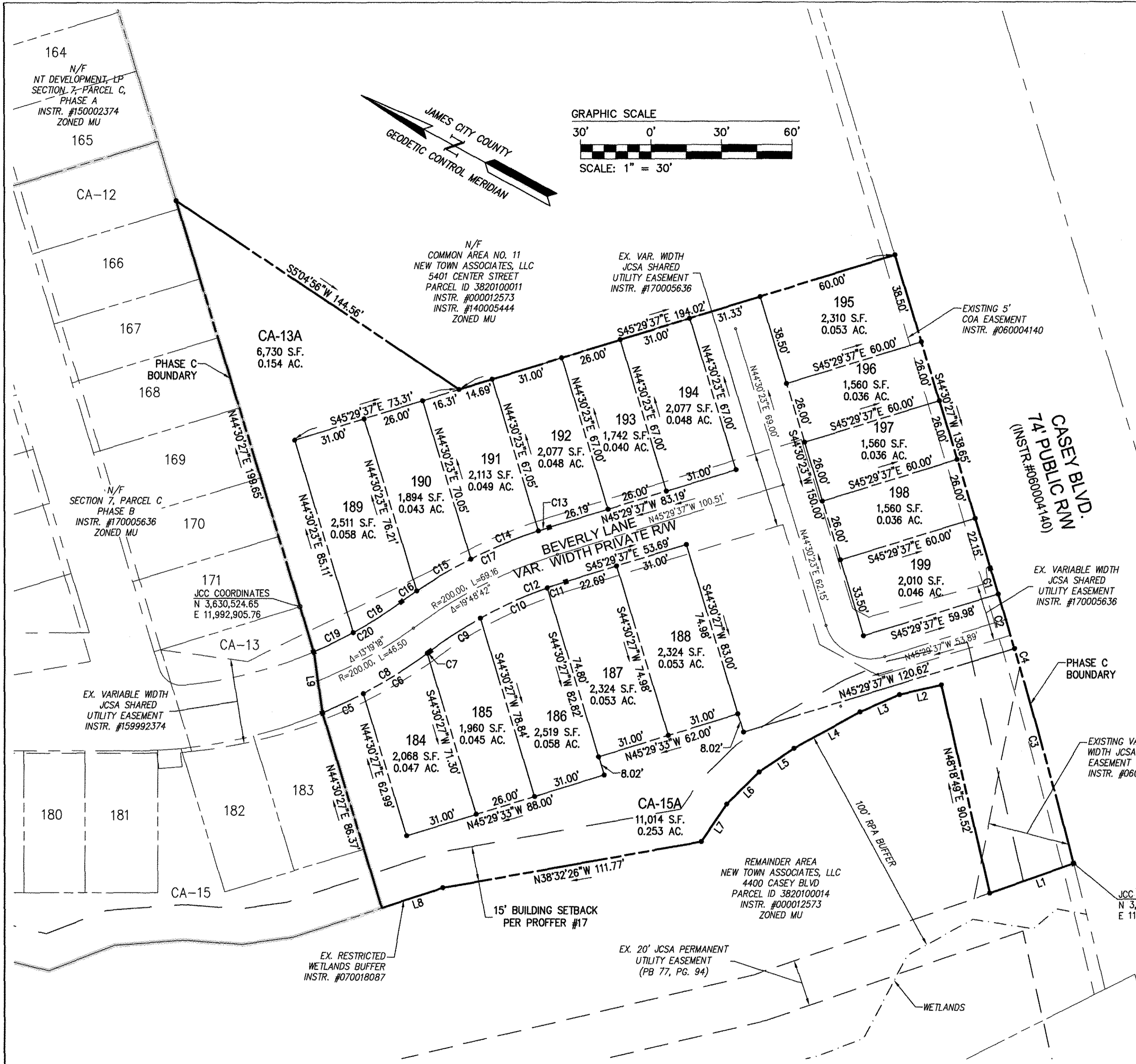


170019784



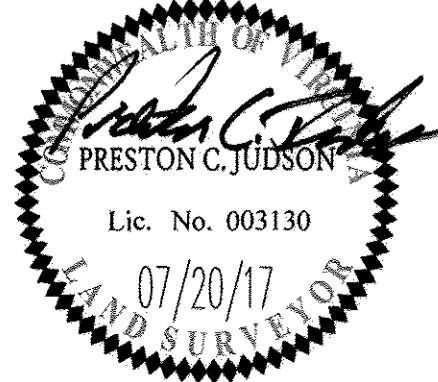
CURVE TABLE						
CURVE #	DELTA	RADIUS	LENGTH	TANGENT	CHORD	CHORD BEARING
C1	0°12'36"	3096.70'	11.35'	5.68'	11.35'	S44°36'45"W
C2	0°26'39"	3096.70'	24.00'	12.00'	24.00'	S44°56'22"W
C3	1°44'39"	3096.70'	94.27'	47.14'	94.27'	S46°02'01"W
C4	02°23'54"	3096.70'	129.63'	64.82'	129.62'	S45°42'24"W
C5	5°11'18"	212.00'	19.20'	9.61'	19.19'	S53°34'17"E
C6	8°40'57"	212.00'	32.13'	16.09'	32.10'	S60°30'24"E
C7	0°27'26"	212.00'	1.69'	0.85'	1.69'	S65°04'36"E
C8	14°19'41"	212.00'	53.02'	26.65'	52.88'	S58°08'29"E
C9	7°44'29"	188.00'	25.40'	12.72'	25.38'	S61°26'05"E
C10	9°32'10"	188.00'	31.29'	15.68'	31.25'	S52°47'45"E
C11	2°32'03"	188.00'	8.32'	4.16'	8.31'	S46°45'39"E
C12	19°48'42"	188.00'	65.01'	32.83'	64.68'	S55°23'58"E
C13	1°18'02"	212.00'	4.81'	2.41'	4.81'	N46°08'39"W
C14	8°25'29"	212.00'	31.17'	15.61'	31.14'	N51°00'24"W
C15	7°13'35"	212.00'	26.74'	13.39'	26.72'	N58°49'56"W
C16	2°08'20"	212.00'	7.91'	3.96'	7.91'	N63°30'50"W
C17	19°05'26"	212.00'	70.63'	35.65'	70.30'	N55°02'17"W
C18	7°25'42"	188.02'	24.37'	12.21'	24.35'	N60°52'05"W
C19	5°42'26"	188.02'	18.73'	9.37'	18.72'	N54°18'05"W
C20	13°08'08"	188.02'	43.10'	21.65'	43.01'	N58°00'53"W

LINE TABLE		
LINE	BEARING	LENGTH
L1	N48°01'02"W	37.83'
L2	N41°28'44"W	18.25'
L3	N51°57'01"W	18.25'
L4	N57°11'09"W	31.99'
L5	N62°20'22"W	17.97'
L6	N73°02'40"W	19.35'
L7	N84°07'24"W	19.26'
L8	N46°41'56"W	27.33'
L9	N53°20'45"E	26.03'

2 Large/Small Plat(s) Recorded  
herewith as # 170019784

City of Williamsburg & County of James City  
Circuit Court: This PLAT was recorded on  
October 12, 2017  
at 3:57 AM (PM) PB      PG       
Document # 170019784  
MONA A. FOLEY, CLERK  
*Mona A. Foley*  
*James Zabillaga, D.C.* Clerk

Rev.	Date	Description	Revised By
1	07/20/17	REVISED PER COUNTY COMMENTS	RMS



**AES**  
CONSULTING ENGINEERS  
5248 Olde Towne Road, Suite 1  
Williamsburg, Virginia 23188  
Phone: (757) 253-0040  
Fax: (757) 220-8994  
www.aesva.com  
Hampton Roads | Central Virginia | Middle Peninsula

JCC NO. S-0022-2017  
PLAT OF SUBDIVISION  
**SECTION 7, PARCEL C, PHASE C**  
**NEW TOWN**  
LOTS 184-199, CA-13A AND CA-15A  
OWNED BY NT DEVELOPMENT, LP  
JAMESTOWN DISTRICT | JAMES CITY COUNTY | VIRGINIA

Project Contacts:	PCJ/RMS
Project Number:	6632-07-09
Scale:	Date:
1"=30'	6/7/2017
Sheet Number	
<b>2 of 2</b>	