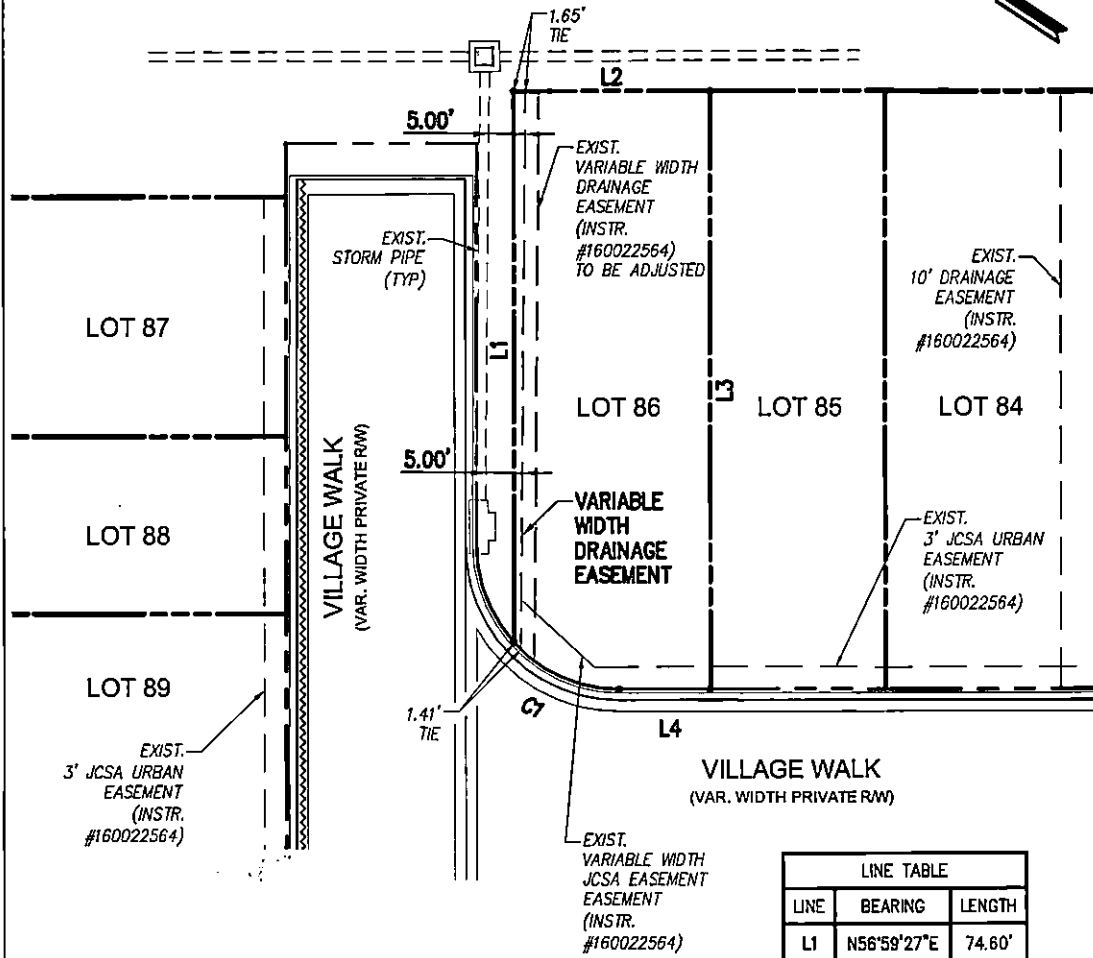
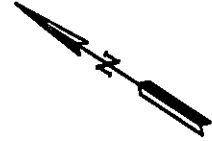
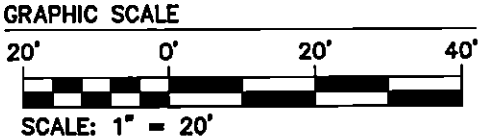


COMMON OPEN SPACE #5
(33,013 S.F. OR 0.758 AC.)



LINE TABLE		
LINE	BEARING	LENGTH
L1	N56°59'27"E	74.60'
L2	S33°00'33"E	27.00'
L3	S56°59'27"W	81.00'
L4	N33°00'33"W	12.55'

CURVE TABLE						
CURVE #	DELTA	RADIUS	LENGTH	TANGENT	CHORD	CHORD BEARING
C1	47°48'16"	19.50'	16.27'	8.64'	15.80'	S9°06'25"E



<p>PLAT OF EASEMENT LINE ADJUSTMENT ON LOT 86</p> <p>VILLAGE WALK AT NEWTOWN</p> <p>NEW TOWN, SECTION 9, PARCEL 2B, LOT 1 PHASE II</p> <p>LOTS 48-98, COS #3, COS #4 AND COS #5</p> <p>JAMESTOWN DISTRICT, JAMES CITY COUNTY, VIRGINIA</p>	Project Contacts: JAG/SDC	Scale: 1"=20'
	Project Number: W06632-9-10-E	Date: 09-01-2017
	<p>5248 Old Towne Road, Suite 1 Williamsburg, Virginia 23188 Phone: (757) 253-0040 Fax: (757) 220-6994 www.aesva.com</p>	