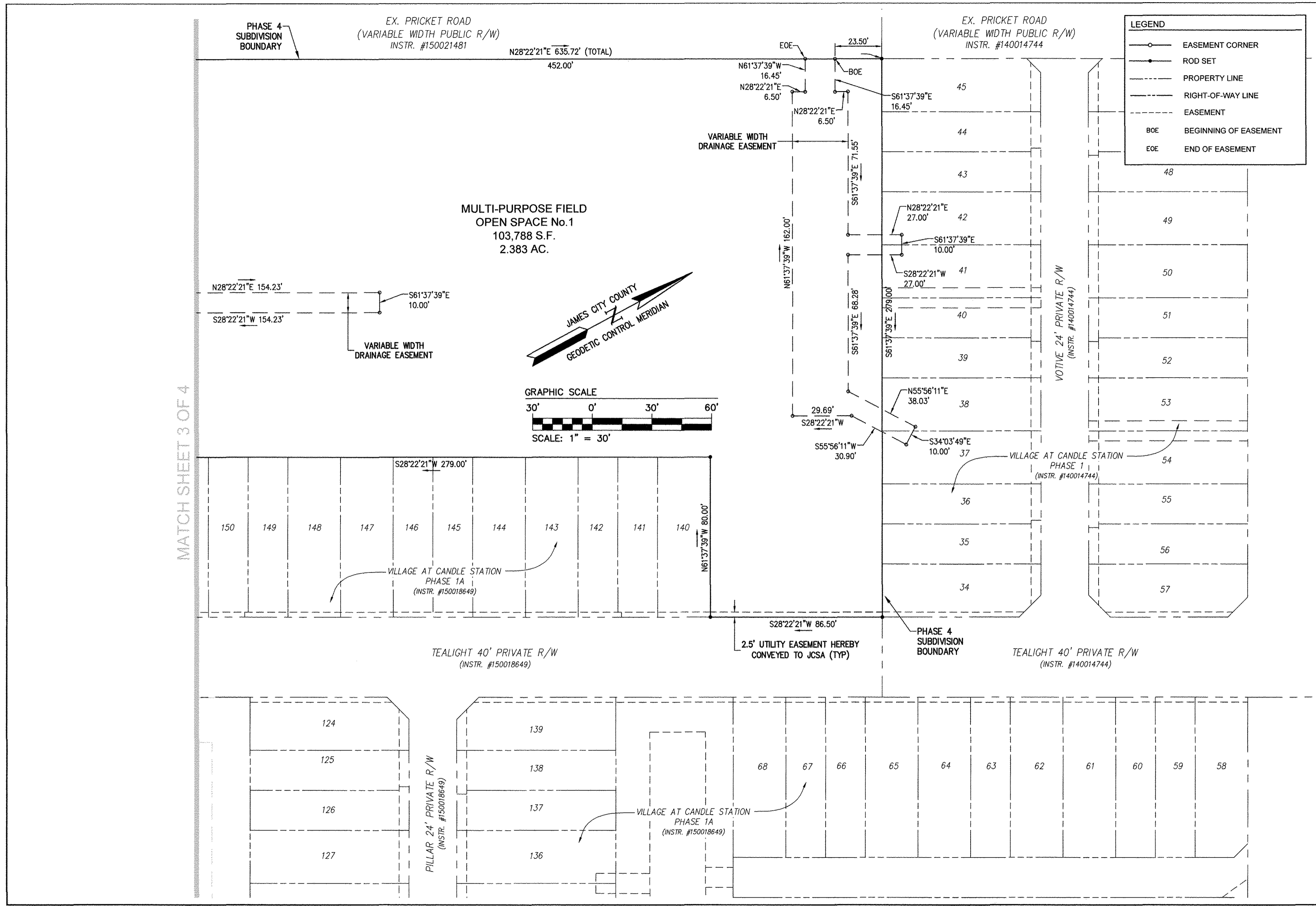


170019223



LEGEND

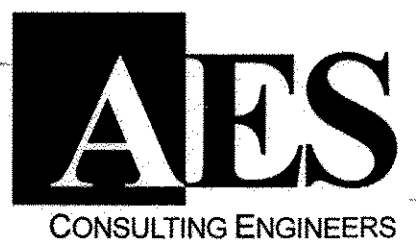
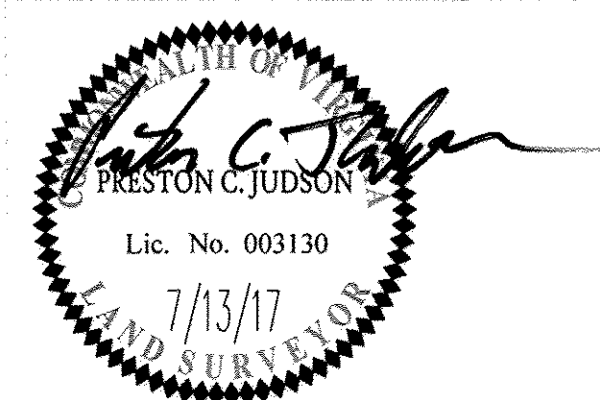
- EASEMENT CORNER
- ROD SET
- PROPERTY LINE
- RIGHT-OF-WAY LINE
- EASEMENT
- BOE BEGINNING OF EASEMENT
- EOE END OF EASEMENT

MATCH SHEET 3 OF 4

S:\AES\170059-00-Candle Factory Mixed Use-Data\Sur\Plat\Phase 4\W10059-00-Phase 4-13124.dwg, 7/25/2017 8:13:24 AM, HP, Drawn by: 6000 HF022_RLB.plt

4	Large Smart Plat(s) Recorded herewith as # 170019223
1	7/13/17
Rev.	Date

City of Williamsburg & County of James City Circuit Court: This PLAT was recorded on 10-3-2017 at 1:19 AM/PM, PG Document # 170019223 MONA A. FOLEY, CLERK



5248 Olde Towne Road, Suite 1
Williamsburg, Virginia 23188
Phone: (757) 253-0040
Fax: (757) 220-8994
www.aesva.com

Hampton Roads | Central Virginia | Middle Peninsula

REF: JCC S-0015-2017

PLAT OF SUBDIVISION
VILLAGE AT CANDLE STATION
PHASE 4, LOTS 152-175
AND OPEN SPACE #1
FOR: CANDLE DEVELOPMENT, LLC

STONEHOUSE DISTRICT | JAMES CITY COUNTY | VIRGINIA

Project Contacts: JAG/PCJ	
Project Number: W10059-00	
Scale: 1"=30'	Date: 05/01/17
Sheet Number	
4 of 4	