

17001778

SURVEYORS CERTIFICATE

I HEREBY CERTIFY THAT THE PLAN PREVIOUSLY RECORDED FOR GOVERNOR'S GROVE AT FIVE FORKS, A CONDOMINIUM AT INSTRUMENT NO. 160009184 ACCURATELY DEPICTS THE UNIT AND RELATED IMPROVEMENTS SHOWN AND THAT THEY COMPLY WITH THE CODE OF VIRGINIA OF 1950, AS AMENDED §55-79.58(B) AND ARE SUBSTANTIALLY COMPLETE.

I HEREBY CERTIFY THAT THIS PLAT IS ACCURATE AND THAT IT COMPLIES WITH THE CODE OF VIRGINIA OF 1950, AS AMENDED, §55-79.58, AND I FURTHER CERTIFY THAT ALL IMPROVEMENTS OR PORTIONS THEREOF DEPICTED HEREON, PURSUANT TO THE CODE OF VIRGINIA, §55-79.58(A), ARE SUBSTANTIALLY COMPLETE.

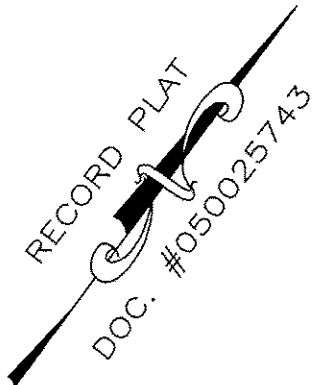


William S. Felts

WILLIAM S. FELTS LIC. #3149

08/31/2017

DATE



- INDICATES ADDITIONAL LAND
- INDICATES PREVIOUSLY SUBMITTED LAND
- SUBMITTED LAND
- LIMITED COMMON ELEMENT (LCE)

City of Williamsburg & County of James City
Circuit Court: This PLAT was recorded on

9/18/2017

at 9:40 AM/PM, PB PG

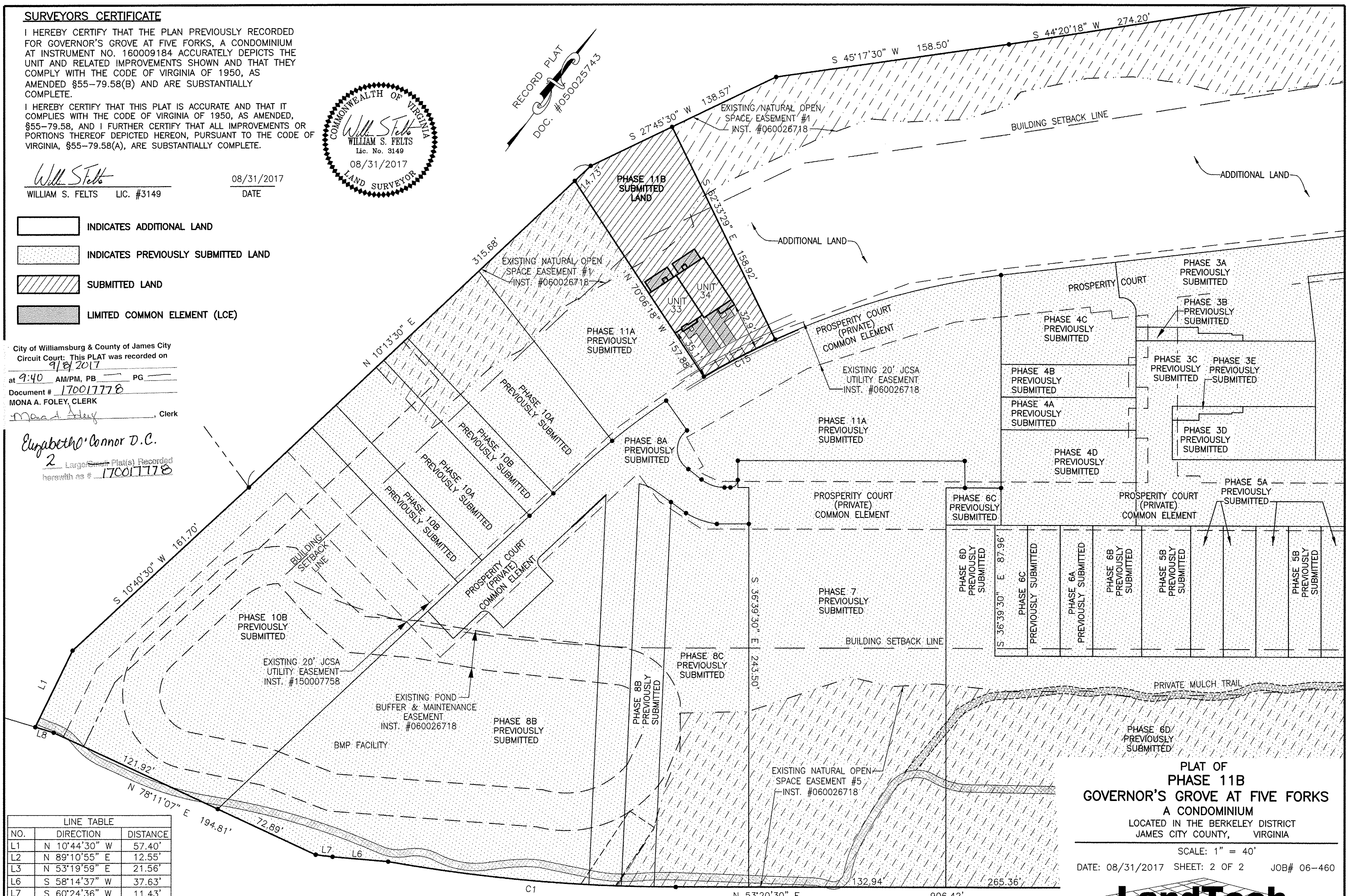
Document # 17001778

MONA A. FOLEY, CLERK

Mona A. Foley, Clerk

Elizabeth O'Connor D.C.

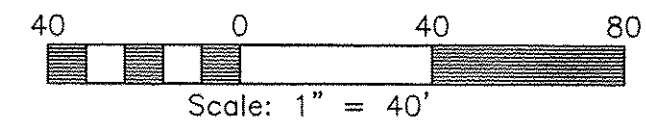
2 Large/Small Plat(s) Recorded
herein as # 17001778



LINE TABLE		
NO.	DIRECTION	DISTANCE
L1	N 10°44'30" W	57.40'
L2	N 89°10'55" E	12.55'
L3	N 53°19'59" E	21.56'
L6	S 58°14'37" W	37.63'
L7	S 60°24'36" W	11.43'
L8	S 70°12'23" W	12.96'

CURVE TABLE					
NO.	DELTA	CHORD BEARING	RADIUS	ARC	CHORD
C1	10°00'21"	S 58°20'41" W	1116.00'	194.89'	194.64'
C2	0°45'04"	S 53°43'02" W	1116.00'	14.63'	14.63'
C3	23°17'08"	N 72°42'40" E	54.42'	22.12'	21.96'

JOHN TYLER HIGHWAY
STATE ROUTE #5
(VARIABLE WIDTH PUBLIC R/W)



PLAT OF
PHASE 11B
GOVERNOR'S GROVE AT FIVE FORKS
A CONDOMINIUM
LOCATED IN THE BERKELEY DISTRICT
JAMES CITY COUNTY, VIRGINIA

SCALE: 1" = 40'
DATE: 08/31/2017 SHEET: 2 OF 2 JOB# 06-460



3925 Midlands Road, Williamsburg, VA 23188
Phone: (757) 565-1677 Fax: (757) 565-0782
web: landtechresources.com

JCC Subdivision Agent
Approval Not Required