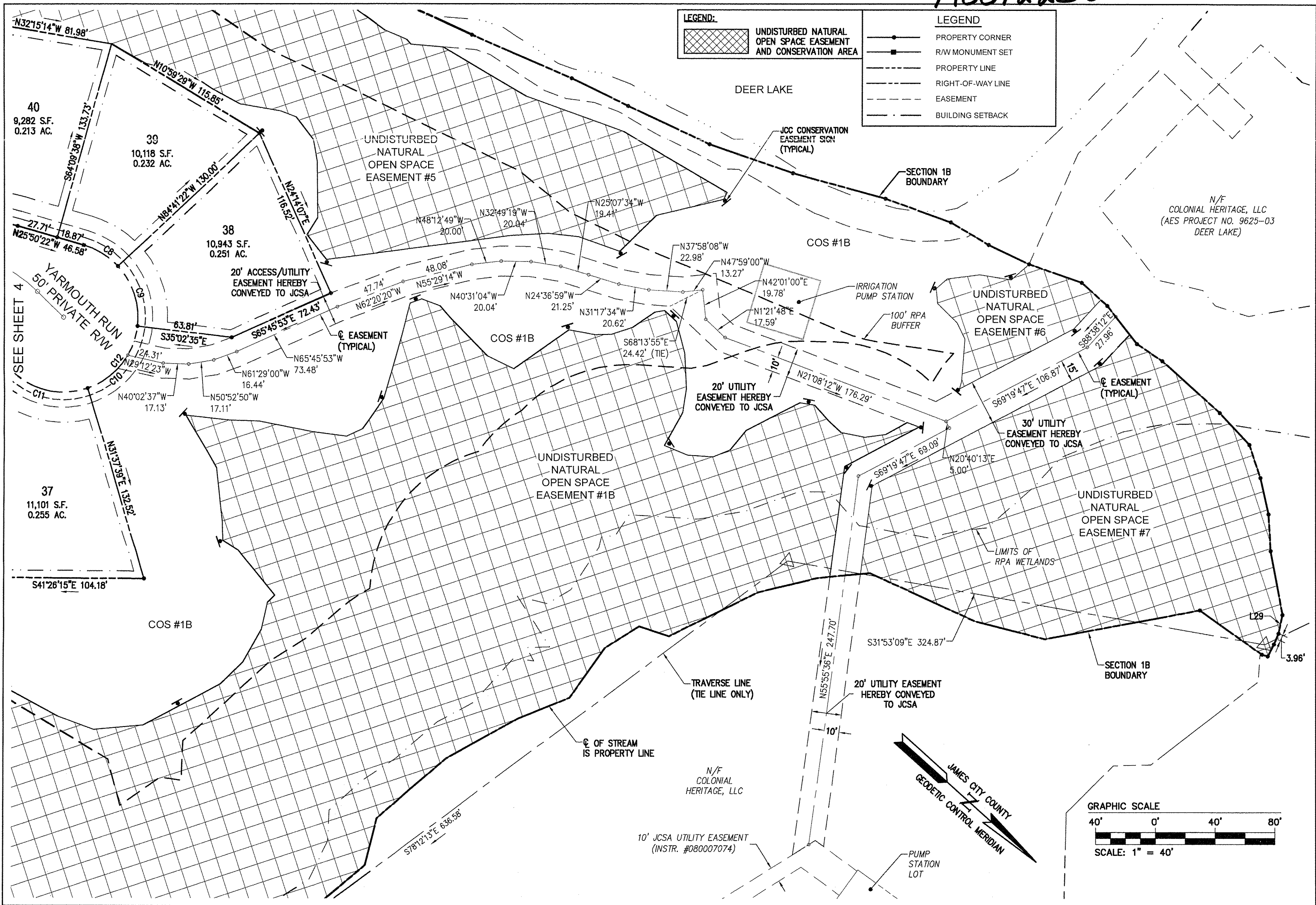
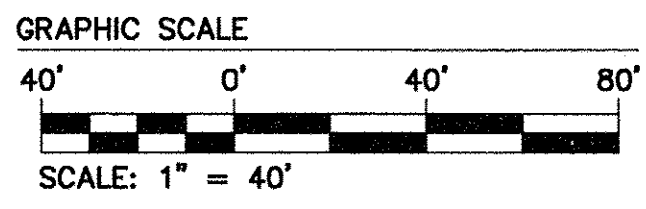


170012238



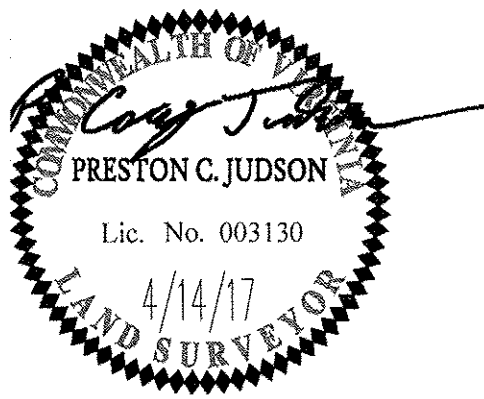
**LEGEND:**

- UNDISTURBED NATURAL OPEN SPACE EASEMENT AND CONSERVATION AREA
- PROPERTY CORNER
- R/W MONUMENT SET
- PROPERTY LINE
- RIGHT-OF-WAY LINE
- EASEMENT
- BUILDING SETBACK



1	04/14/17	REVISED PER COUNTY COMMENTS	RMS
Rev.	Date	Description	Revised By

City of Williamsburg & County of James City  
 Circuit Court: This PLAT was recorded on  
**JUNE 14, 2017**  
 at 11:02 AM, PB PG  
 Document # **170012238**  
 MONA A. FOLEY, CLERK



**AES**  
 CONSULTING ENGINEERS  
 614 Moorefield Park Drive  
 Richmond, Virginia 23236-3655  
 Phone: (804) 330-8040  
 Fax: (804) 330-9840  
 www.aesva.com

JCC NO. S-0004-2016  
 PLAT OF SUBDIVISION  
 LOTS 26-49, 59-64, AND 80-108  
**COLONIAL HERITAGE  
 PHASE VI - SECTION 1B**  
 OWNER / DEVELOPER: COLONIAL HERITAGE, LLC  
 STONEHOUSE DISTRICT JAMES CITY COUNTY VIRGINIA

Project Contacts: PCJ/TRS	
Project Number: 8881-61B	
Scale: 1"=40'	Date: 02/16/17
Sheet Number	
<b>6 OF 8</b>	

S:\JOB\S\8881\61-Phase VI-Plat (59 Lots)\Plat\Phase VI-1B-Plat (59 Lots)\8881-61B-SUBD Plat.dwg, 4/26/2017 1:56:55 PM, PDF, XChange for Acrobat, ProPlot