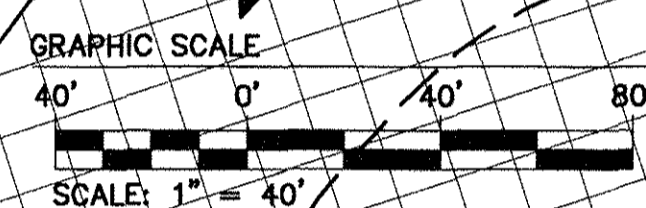
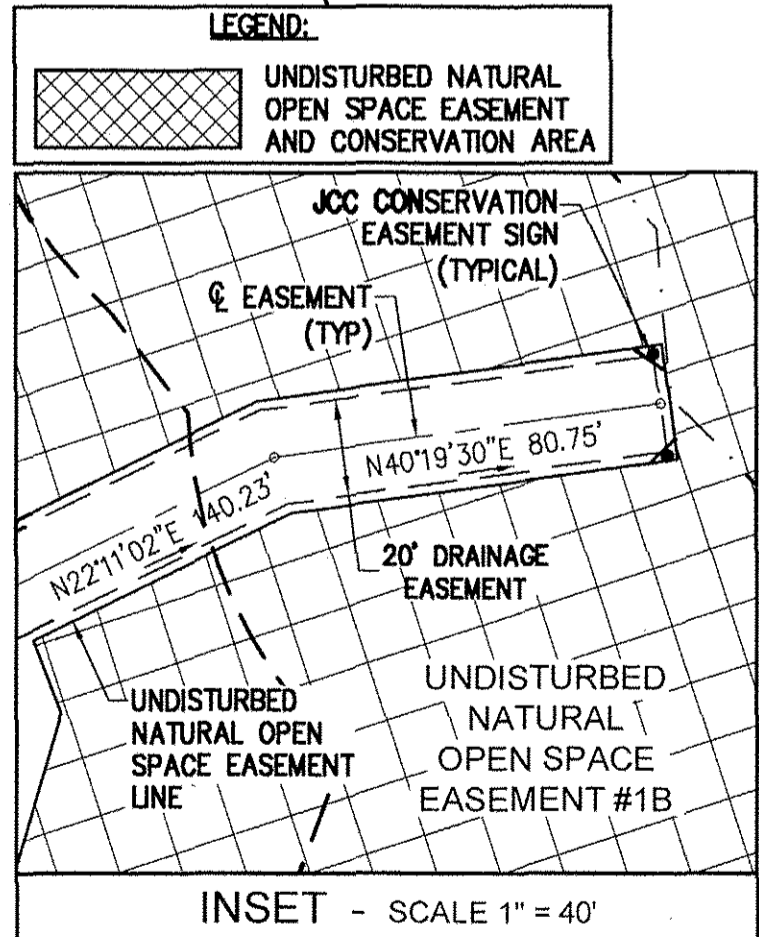


170012238



LEGEND

- PROPERTY CORNER
- R/W MONUMENT SET
- PROPERTY LINE
- - - RIGHT-OF-WAY LINE
- - - EASEMENT
- - - BUILDING SETBACK



BMP #25 LINE TABLE

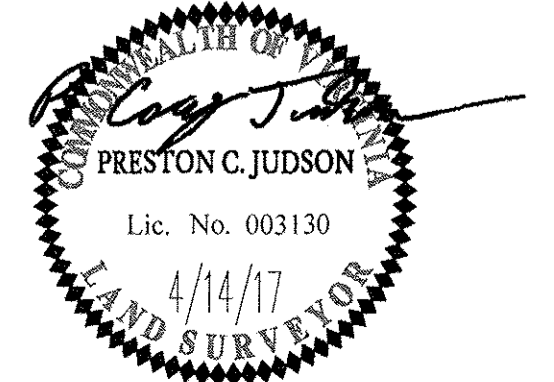
LINE TABLE			LINE TABLE			LINE TABLE		
LINE	BEARING	LENGTH	LINE	BEARING	LENGTH	LINE	BEARING	LENGTH
L1	N8°44'36"W	13.13'	L10	S66°01'17"E	20.01'	L19	S43°17'08"W	62.09'
L2	N6°33'22"E	13.13'	L11	S64°37'55"E	12.60'	L20	S54°57'51"W	19.96'
L3	N21°51'20"E	13.13'	L12	S52°33'08"E	12.60'	L21	S78°19'17"W	19.96'
L4	N37°09'18"E	13.13'	L13	S37°45'08"E	12.81'	L22	N90°00'00"W	35.28'
L5	N44°48'17"E	77.35'	L14	S23°02'05"E	12.46'	L23	N83°43'33"W	10.78'
L6	N52°20'08"E	14.41'	L15	S8°23'44"E	12.67'	L24	N71°10'40"W	10.78'
L7	N69°07'01"E	14.41'	L16	S6°22'14"W	12.67'	L25	N59°37'12"W	9.08'
L8	N85°57'13"E	14.46'	L17	S21°08'12"W	12.67'	L26	N47°04'19"W	12.47'
L9	S77°10'45"E	14.46'	L18	S35°54'09"W	12.67'	L27	N28°06'01"W	20.01'

SEE SHEET 4 FOR LOT AND R/W CURVE TABLES

City of Williamsburg & County of James City Circuit Court: This PLAT was recorded on **JUNE 14, 2017** at **11:02** (AM/PM) PG. Document # **170012238** MONA A. FOLEY, CLERK

3 Large/Small Plat(s) Recorded herewith as # **170012238**

1	04/14/17	REVISED PER COUNTY COMMENTS	RMS
Rev.	Date	Description	Revised By



AES
CONSULTING ENGINEERS
Hampton Roads | Central Virginia | Middle Peninsula
614 Moorefield Park Drive
Richmond, Virginia 23236-3655
Phone: (804) 330-8040
Fax: (804) 330-9840
www.aesva.com

JCC NO. S-0004-2016
PLAT OF SUBDIVISION
LOTS 26-49, 59-64, AND 80-108
**COLONIAL HERITAGE
PHASE VI - SECTION 1B**
OWNER / DEVELOPER: COLONIAL HERITAGE, LLC
STONEHOUSE DISTRICT JAMES CITY COUNTY VIRGINIA

Project Contacts: PCJ/TRS
Project Number: 8881-61B
Scale: 1"=40' Date: 02/16/17
Sheet Number: **5 OF 8**

S:\JOB\8881-61-Phase VI-Subd\Draw\Plat\Phase VI-1B-Plat (50-Lot(s)).dwg, 61B-SUBD P05.dwg, 4/26/2017 1:59:43 PM, PDF, XChange for Acrobat, Prg.pcs