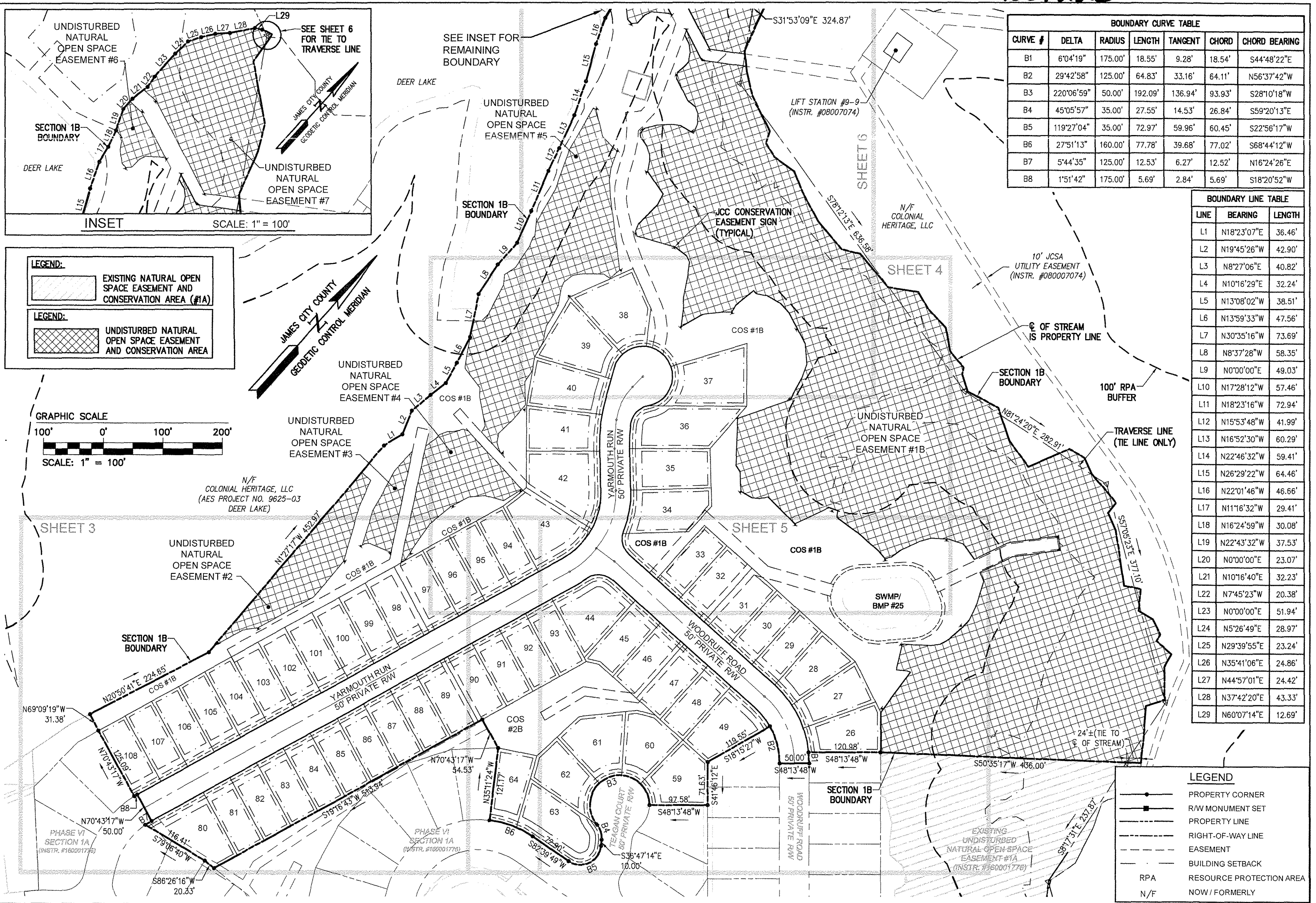


170012238



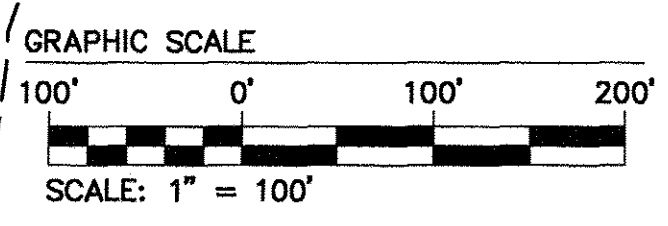
BOUNDARY CURVE TABLE						
CURVE #	DELTA	RADIUS	LENGTH	TANGENT	CHORD	CHORD BEARING
B1	6°04'19"	175.00'	18.55'	9.28'	18.54'	S44°48'22"E
B2	29°42'58"	125.00'	64.83'	33.16'	64.11'	N56°37'42"W
B3	220°06'59"	50.00'	192.09'	136.94'	93.93'	S28°10'18"W
B4	45°05'57"	35.00'	27.55'	14.53'	26.84'	S59°20'13"E
B5	119°27'04"	35.00'	72.97'	59.96'	60.45'	S22°56'17"W
B6	27°51'13"	160.00'	77.78'	39.68'	77.02'	S68°44'12"W
B7	5°44'35"	125.00'	12.53'	6.27'	12.52'	N16°24'26"E
B8	1°51'42"	175.00'	5.69'	2.84'	5.69'	S18°20'52"W

BOUNDARY LINE TABLE		
LINE	BEARING	LENGTH
L1	N18°23'07"E	36.46'
L2	N19°45'26"W	42.90'
L3	N8°27'06"E	40.82'
L4	N10°16'29"E	32.24'
L5	N13°08'02"W	38.51'
L6	N13°59'33"W	47.56'
L7	N30°35'16"W	73.69'
L8	N8°37'28"W	58.35'
L9	N0°00'00"E	49.03'
L10	N17°28'12"W	57.46'
L11	N18°23'16"W	72.94'
L12	N15°53'48"W	41.99'
L13	N16°52'30"W	60.29'
L14	N22°46'32"W	59.41'
L15	N26°29'22"W	64.46'
L16	N22°01'46"W	46.66'
L17	N11°16'32"W	29.41'
L18	N16°24'59"W	30.08'
L19	N22°43'32"W	37.53'
L20	N0°00'00"E	23.07'
L21	N10°16'40"E	32.23'
L22	N7°45'23"W	20.38'
L23	N0°00'00"E	51.94'
L24	N5°26'49"E	28.97'
L25	N29°39'55"E	23.24'
L26	N35°41'06"E	24.86'
L27	N44°57'01"E	24.42'
L28	N37°42'20"E	43.33'
L29	N60°07'14"E	12.69'

LEGEND:

EXISTING NATURAL OPEN SPACE EASEMENT AND CONSERVATION AREA (#1A)

UNDISTURBED NATURAL OPEN SPACE EASEMENT AND CONSERVATION AREA

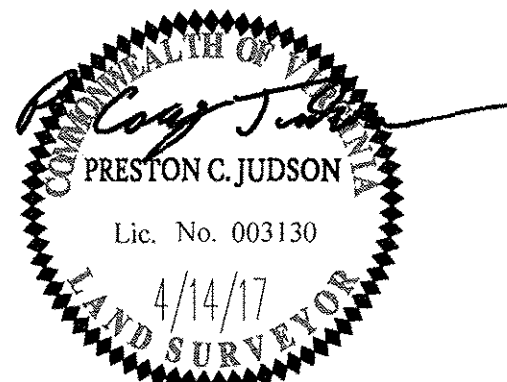


LEGEND

- PROPERTY CORNER
- R/W MONUMENT SET
- PROPERTY LINE
- RIGHT-OF-WAY LINE
- EASEMENT
- BUILDING SETBACK
- RPA
- N/F

City of Williamsburg & County of James City
 Circuit Court: This PLAT was recorded on
JUNE 14, 2017
 at 11:02 AM, PG
 Document # **170012238**
 MONA A. FOLEY, CLERK

1 04/14/17 REVISED PER COUNTY COMMENTS RMS
 Rev Date Description Revised by



AES
 CONSULTING ENGINEERS

614 Moorefield Park Drive
 Richmond, Virginia 23236-3655
 Phone: (804) 330-8040
 Fax: (804) 330-9840
 www.aesva.com

Hampton Roads | Central Virginia | Middle Peninsula

JCC NO. S-0004-2016

PLAT OF SUBDIVISION
 LOTS 26-49, 59-64, AND 80-108
COLONIAL HERITAGE
 PHASE VI - SECTION 1B
 OWNER / DEVELOPER: COLONIAL HERITAGE, LLC

STONEHOUSE DISTRICT JAMES CITY COUNTY VIRGINIA

Project Contacts: PCJ/TRS
 Project Number: 8881-61B
 Scale: 1"=100' Date: 02/16/17
 Sheet Number
2 OF 8