

170011778

**SURVEYORS CERTIFICATE**

I HEREBY CERTIFY THAT THE PLAN PREVIOUSLY RECORDED FOR GOVERNOR'S GROVE AT FIVE FORKS, A CONDOMINIUM AT INSTRUMENT NO. 160009184 ACCURATELY DEPICTS THE UNIT AND RELATED IMPROVEMENTS SHOWN AND THAT THEY COMPLY WITH THE CODE OF VIRGINIA OF 1950, AS AMENDED §55-79.58(B) AND ARE SUBSTANTIALLY COMPLETE.

I HEREBY CERTIFY THAT THIS PLAT IS ACCURATE AND THAT IT COMPLIES WITH THE CODE OF VIRGINIA OF 1950, AS AMENDED, §55-79.58, AND I FURTHER CERTIFY THAT ALL IMPROVEMENTS OR PORTIONS THEREOF DEPICTED HEREON, PURSUANT TO THE CODE OF VIRGINIA, §55-79.58(A), ARE SUBSTANTIALLY COMPLETE.



*William S. Felts*

WILLIAM S. FELTS LIC. #3149

06/01/2017  
DATE

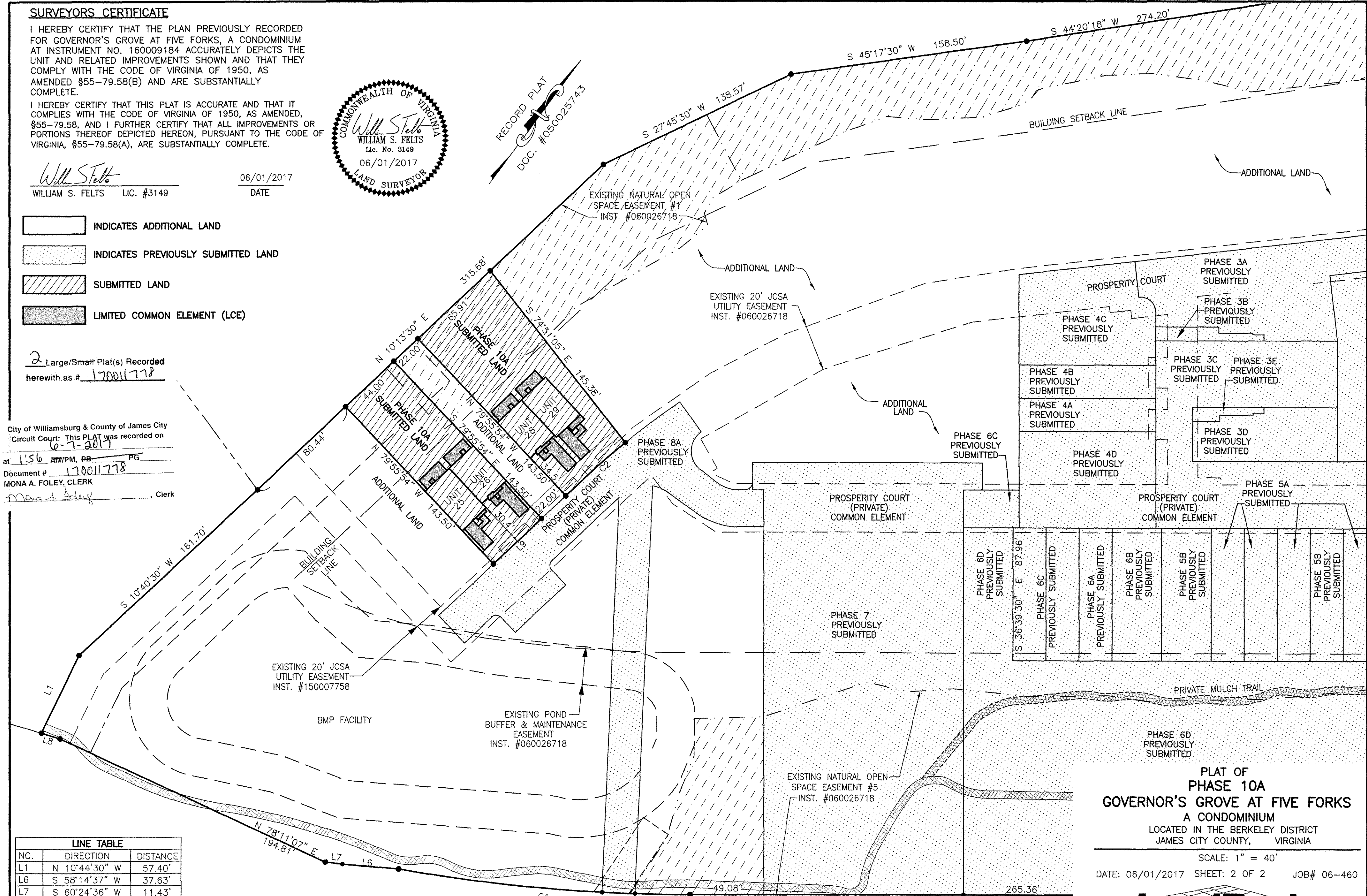
RECORD PLAT  
DOC. #050025743

- INDICATES ADDITIONAL LAND
- INDICATES PREVIOUSLY SUBMITTED LAND
- SUBMITTED LAND
- LIMITED COMMON ELEMENT (LCE)

2 Large/Small Plat(s) Recorded  
herewith as # 170011778

City of Williamsburg & County of James City  
Circuit Court: This PLAT was recorded on  
6-7-2017  
at 1:56 PM, PG  
Document # 170011778  
MONA A. FOLEY, CLERK

\_\_\_\_\_, Clerk



LINE TABLE		
NO.	DIRECTION	DISTANCE
L1	N 10°44'30" W	57.40'
L6	S 58°14'37" W	37.63'
L7	S 60°24'36" W	11.43'
L8	S 70°12'23" W	12.96'
L9	S 10°13'30" W	44.01'

CURVE TABLE				
NO.	DELTA	CHORD BEARING	RADIUS	CHORD
C1	10°00'21"	S 58°20'41" W	1116.00'	194.89'
C2	04°26'47"	S 12°06'56" W	523.62'	40.64'

JOHN TYLER HIGHWAY  
STATE ROUTE #5  
(VARIABLE WIDTH PUBLIC R/W)

PLAT OF  
PHASE 10A  
GOVERNOR'S GROVE AT FIVE FORKS  
A CONDOMINIUM  
LOCATED IN THE BERKELEY DISTRICT  
JAMES CITY COUNTY, VIRGINIA

SCALE: 1" = 40'  
DATE: 06/01/2017 SHEET: 2 OF 2 JOB# 06-460

JCC Subdivision Agent  
Approval Not Required

**LandTech Resources, Inc.**  
Engineering & Surveying Consultants

3925 Midlands Road, Williamsburg, VA 23188  
Phone: (757) 565-1677 Fax: (757) 565-0782  
web: landtechresources.com

