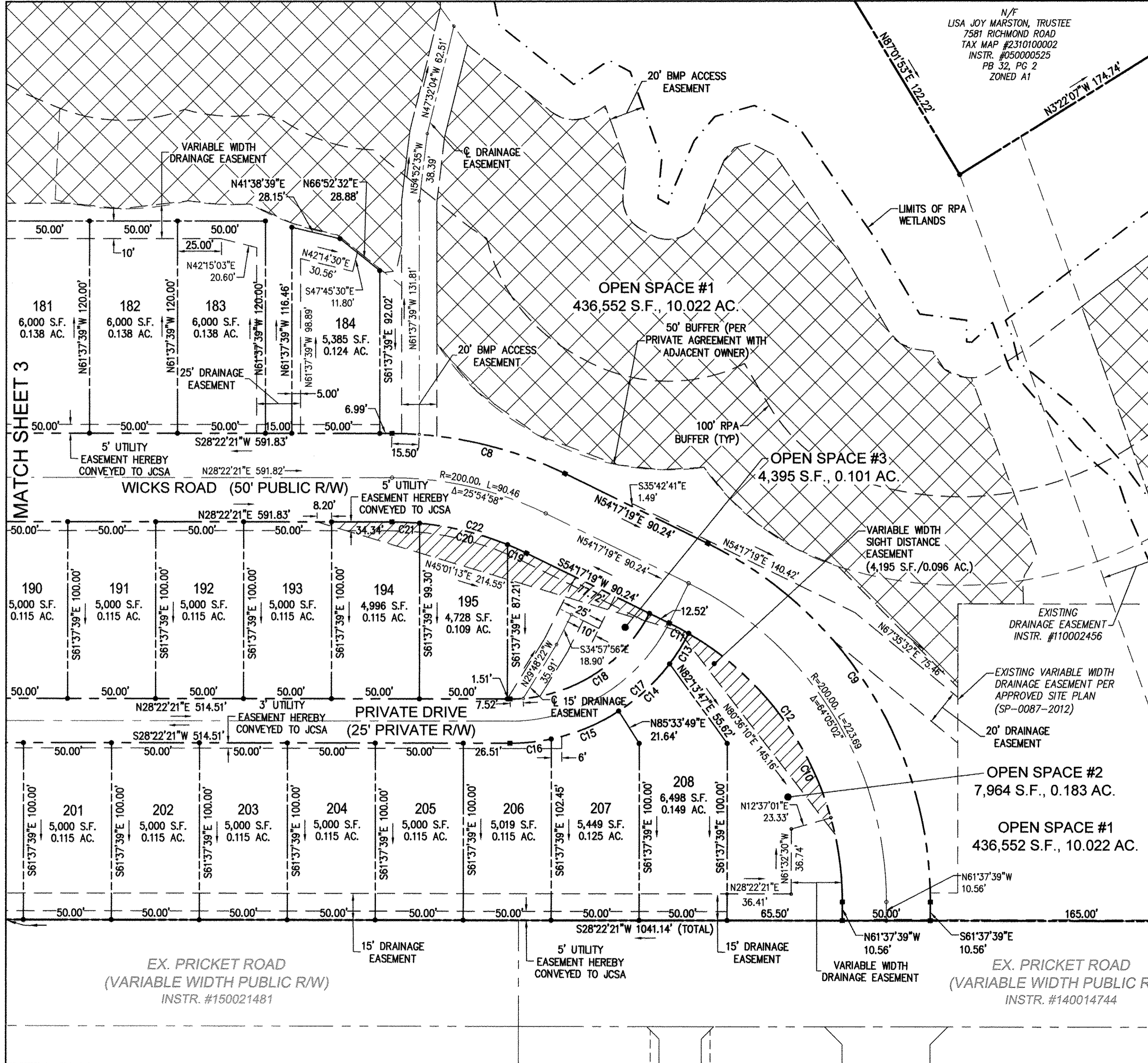


170009969

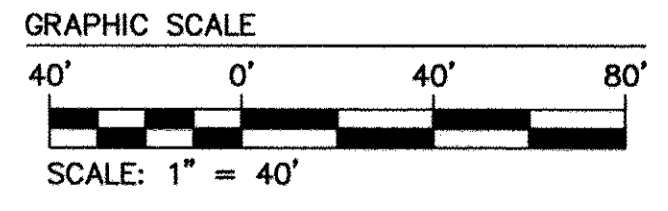
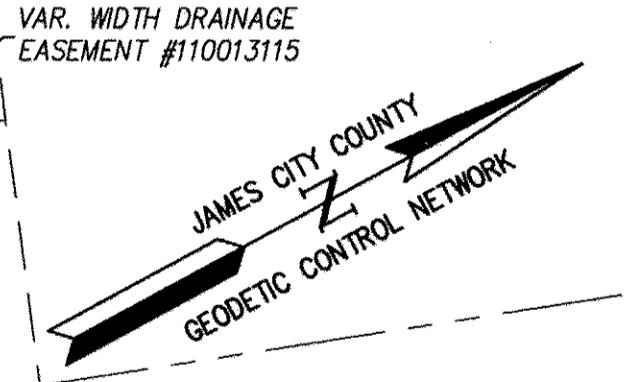
N/F
LISA JOY MARSTON, TRUSTEE
7581 RICHMOND ROAD
TAX MAP #2310100002
INSTR. #050000525
PB 32, PG 2
ZONED A1

CURVE TABLE						
CURVE #	DELTA	RADIUS	LENGTH	TANGENT	CHORD	CHORD BEARING
C8	25°54'58"	225.00'	101.77'	51.77'	100.91'	S41°19'50"W
C9	64°05'02"	225.00'	251.66'	140.82'	238.74'	S86°19'50"W
C10	59°59'44"	175.00'	183.25'	101.03'	174.99'	N88°22'29"E
C11	4°05'18"	175.00'	12.49'	6.25'	12.48'	N56°19'58"E
C12	64°05'02"	175.00'	195.73'	109.53'	185.69'	N86°19'50"E
C13	10°13'17"	114.00'	20.34'	10.20'	20.31'	N29°26'23"W
C14	19°53'33"	114.00'	39.58'	19.99'	39.38'	N14°22'58"W
C15	20°54'58"	114.00'	41.62'	21.04'	41.39'	N6°01'18"E
C16	11°53'34"	114.00'	23.66'	11.87'	23.62'	N22°25'34"E
C17	62°55'22"	114.00'	125.20'	69.75'	119.00'	N3°05'20"W
C18	62°53'00"	89.00'	97.68'	54.41'	92.85'	S3°04'09"E
C19	3°52'42"	175.00'	11.85'	5.92'	11.84'	N52°20'58"E
C20	16°54'10"	175.00'	51.63'	26.00'	51.44'	N41°57'33"E
C21	5°08'07"	175.00'	15.68'	7.85'	15.68'	N30°56'24"E
C22	25°54'58"	175.00'	79.16'	40.27'	78.48'	N41°19'50"E



LEGEND:

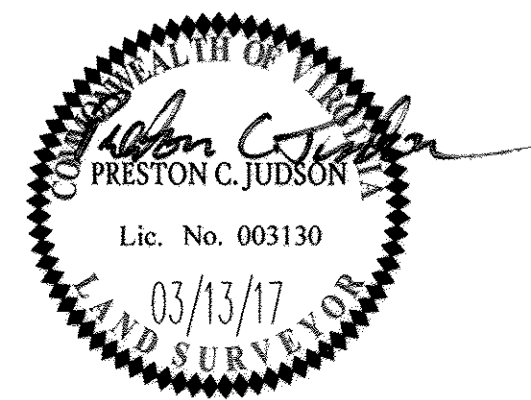
- JAMES CITY COUNTY UNDISTURBED NATURAL OPEN SPACE EASEMENT
- VARIABLE WIDTH SIGHT DISTANCE EASEMENT
- ROD SET
- SURVEY TRAVERSE POINT
- PROPERTY LINE
- RIGHT-OF-WAY LINE
- EASEMENT
- RPA RESOURCE PROTECTION AREA



City of Williamsburg & County of James City Circuit Court: This PLAT was recorded on **MAY 16, 2017** at **10:30** AM, PB PG **1** Document # **170009969** MONA A. FOLEY, CLERK

Mona A. Foley Clerk

Rev.	Date	Description	Revised By
1	03/13/17	REVISIONS PER COMMENTS	JAG



AES
CONSULTING ENGINEERS
Hampton Roads | Central Virginia | Middle Peninsula
5248 Olde Towne Road, Suite 1
Williamsburg, Virginia 23188
Phone: (757) 253-0040
Fax: (757) 220-8994
www.aesva.com

PLAT OF SUBDIVISION
VILLAGE AT CANDLE STATION
PHASE 7, LOTS 31-33 AND 176-208
AND OPEN SPACES #1 THRU #4
FOR: CANDLE DEVELOPMENT, LLC
STONEHOUSE DISTRICT JAMES CITY COUNTY VIRGINIA

Project Contacts: JAG/PCJ
Project Number: W10059-01
Scale: 1"=40' Date: 02/02/17
Sheet Number
4 of 4