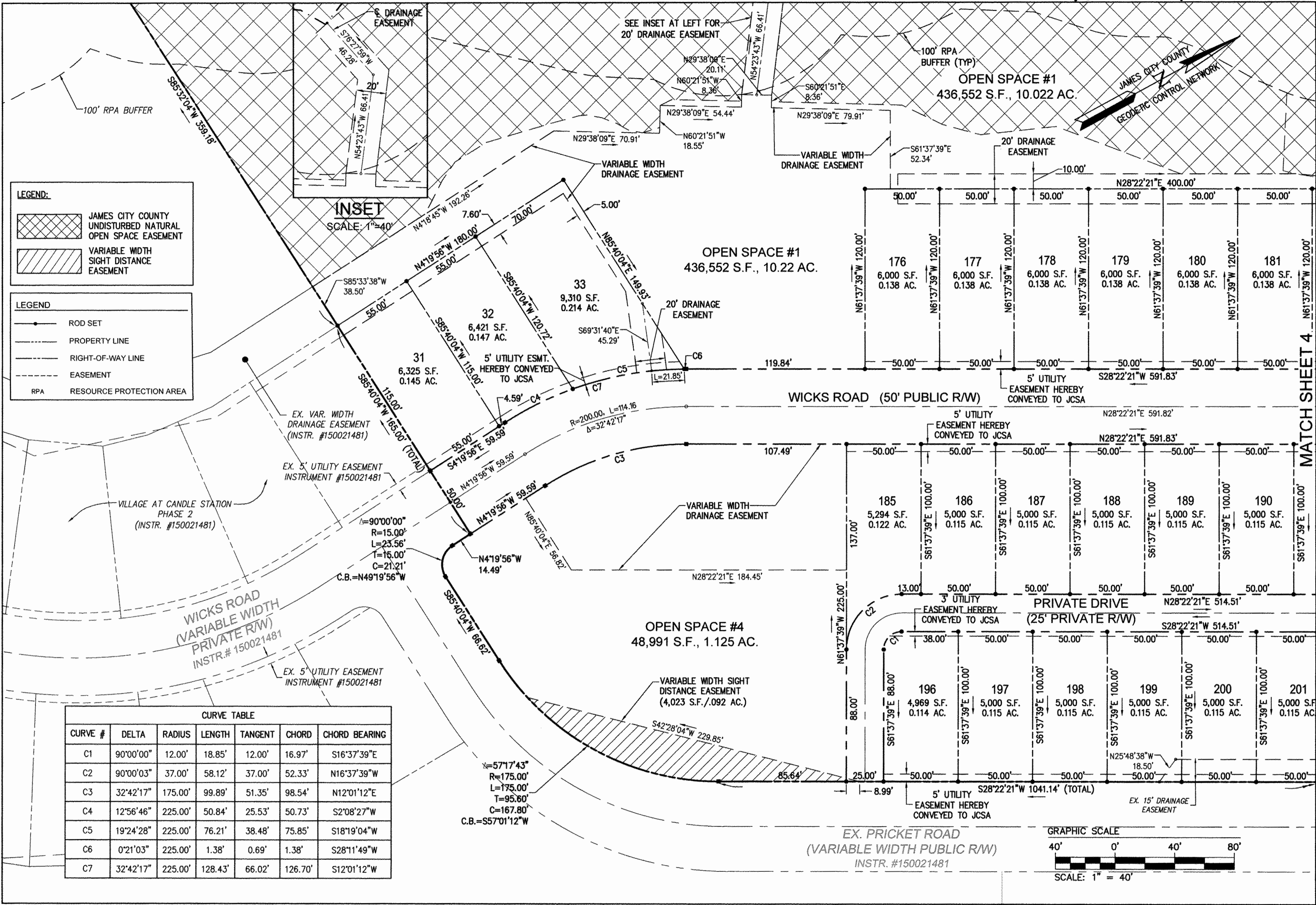


170009969



LEGEND:

- JAMES CITY COUNTY UNDISTURBED NATURAL OPEN SPACE EASEMENT
- VARIABLE WIDTH SIGHT DISTANCE EASEMENT

LEGEND:

- ROD SET
- PROPERTY LINE
- RIGHT-OF-WAY LINE
- EASEMENT
- RPA RESOURCE PROTECTION AREA

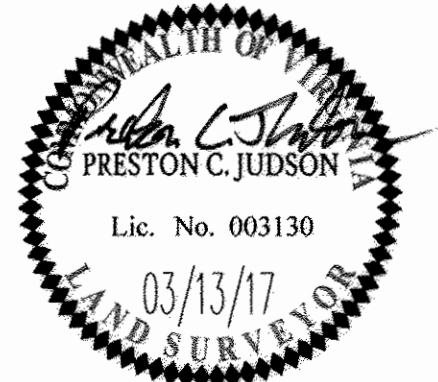
CURVE TABLE

CURVE #	DELTA	RADIUS	LENGTH	TANGENT	CHORD	CHORD BEARING
C1	90°00'00"	12.00'	18.85'	12.00'	16.97'	S16°37'39"E
C2	90°00'03"	37.00'	58.12'	37.00'	52.33'	N16°37'39"W
C3	32°42'17"	175.00'	99.89'	51.35'	98.54'	N12°01'12"E
C4	12°56'46"	225.00'	50.84'	25.53'	50.73'	S2°08'27"W
C5	19°24'28"	225.00'	76.21'	38.48'	75.85'	S18°19'04"W
C6	0°21'03"	225.00'	1.38'	0.69'	1.38'	S28°11'49"W
C7	32°42'17"	225.00'	128.43'	66.02'	126.70'	S12°01'12"W

4 Large/Small Plat(s) Recorded herewith as # 170009969

Rev.	Date	Description	Revised By
1	03/13/17		JAG

City of Williamsburg & County of James City Circuit Court: This PLAT was recorded on **MAY 16, 2017** at **10:30 AM**, PB PG Document # **170009969** MONA A. FOLEY, CLERK



AES
CONSULTING ENGINEERS
5248 Olde Towne Road, Suite 1
Williamsburg, Virginia 23188
Phone: (757) 253-0040
Fax: (757) 220-8994
www.aesva.com

PLAT OF SUBDIVISION
VILLAGE AT CANDLE STATION
PHASE 7, LOTS 31-33 AND 176-208
AND OPEN SPACES #1 THRU #4
FOR: CANDLE DEVELOPMENT, LLC
STONEHOUSE DISTRICT JAMES CITY COUNTY VIRGINIA

Project Contacts: JAG/PCJ
Project Number: W10059-01
Scale: 1"=40'
Date: 02/02/17
Sheet Number: **3 of 4**

MATCH SHEET 4