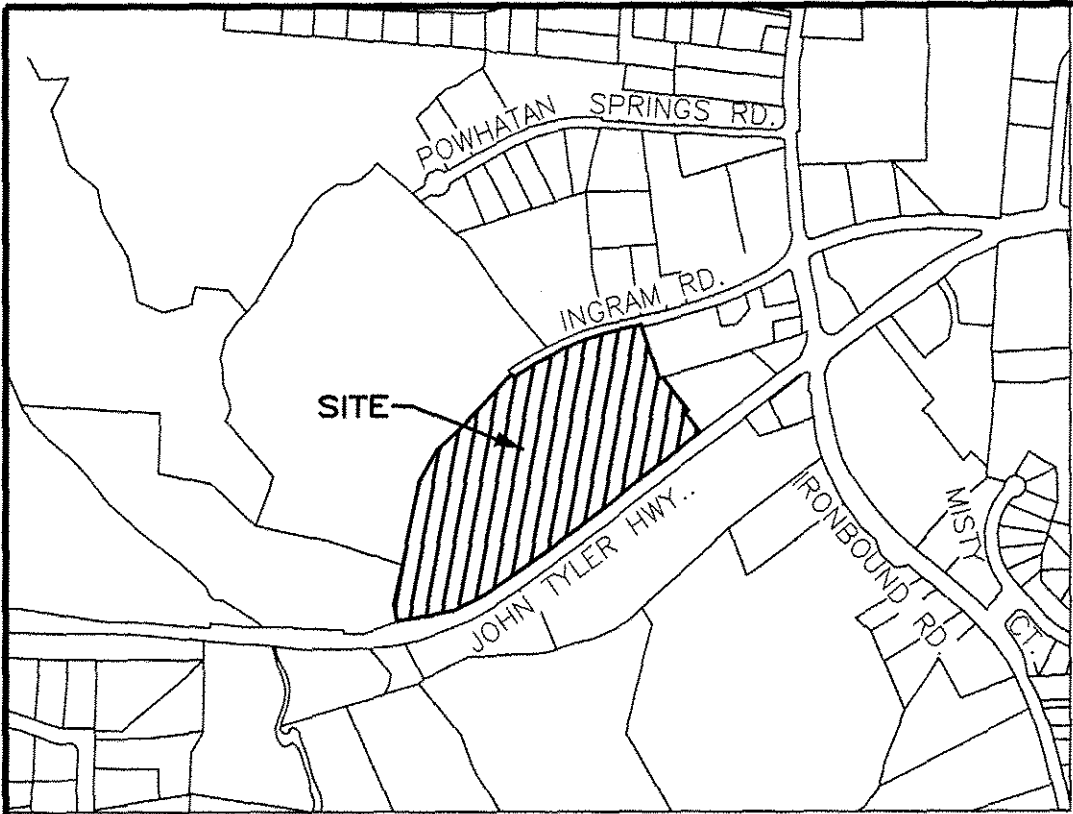


170006746



VICINITY MAP - NOT TO SCALE

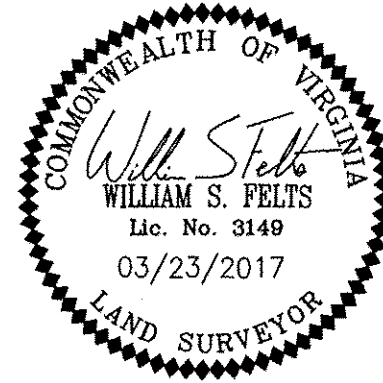
**SURVEYORS CERTIFICATE**

I HEREBY CERTIFY THAT THE PLAN PREVIOUSLY RECORDED FOR GOVERNOR'S GROVE AT FIVE FORKS, A CONDOMINIUM AT INSTRUMENT NO. 160009184 ACCURATELY DEPICT THE UNITS AND RELATED IMPROVEMENTS SHOWN AND THAT THEY COMPLY WITH THE CODE OF VIRGINIA OF 1950, AS AMENDED 55-79.58(B) AND ARE SUBSTANTIALLY COMPLETE.

I HEREBY CERTIFY THAT THIS PLAT IS ACCURATE AND COMPLIES WITH THE PROVISIONS OF SECTION 55-79.58 (A) OF THE CODE OF VIRGINIA 1950 AS AMENDED.

*William S. Felts*  
 WILLIAM S. FELTS LIC. #3149

03/23/2017  
 DATE

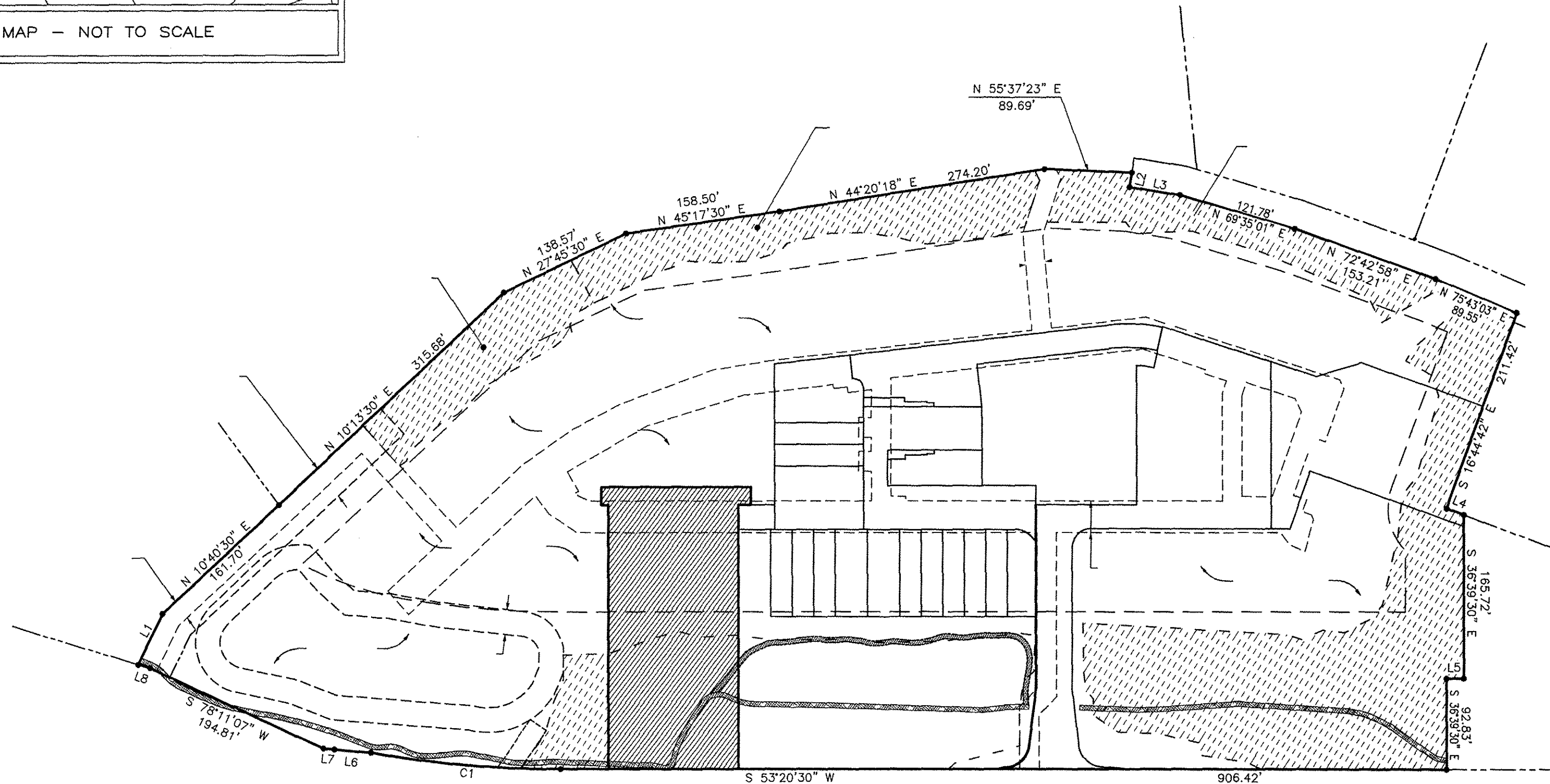
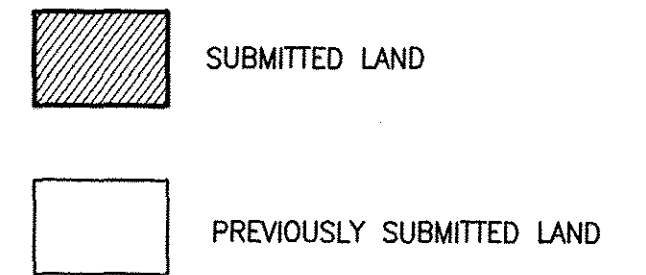


AREA TABLE		
PARCEL	SQ. FT.	ACRES
PHASE 7 SUBMITTED LAND	38,385	0.881
PREVIOUSLY SUBMITTED LAND	180,210	4.137
ADDITIONAL LAND	434,641	9.978
TOTAL	653,236	14.996

PLAT OF  
 PHASE 7  
 GOVERNOR'S GROVE AT FIVE FORKS  
 A CONDOMINIUM  
 LOCATED IN THE BERKELEY DISTRICT  
 JAMES CITY COUNTY, VIRGINIA  
 DATE: 03/23/2017 SCALE: 1" = 100' JOB# 06-460  
 SHEET: 1 OF 3

**LandTech Resources, Inc.**  
 Engineering & Surveying Consultants  
 3925 Midlands Road, Williamsburg, VA 23188  
 Phone: (757) 565-1677 Fax: (757) 565-0782  
 web: landtechresources.com

JCC Subdivision Agent *EC*  
 Approval Not Required

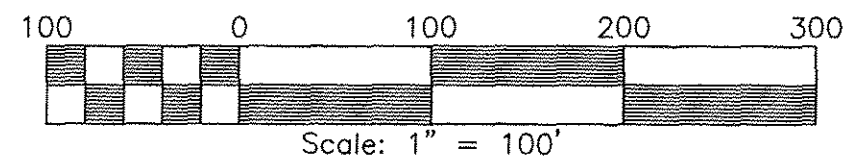


3 Large Small Plat(s) Recorded  
 herewith as # 170006746

City of Williamsburg & County of James City  
 Circuit Court: This PLAT was recorded on  
 3-30-2017  
 at 9:24 AM PM, PB PG  
 Document # 170006746  
 MONA A. FOLEY, CLERK  
*Monica A. Foley*, Clerk

**GENERAL NOTES**

1. THIS PLAT WAS PRODUCED WITHOUT A TITLE REPORT AND MAY NOT REFLECT ALL MATTERS AFFECTING PROPERTY.
2. THIS PROPERTY APPEARS TO FALL IN ZONE "X" AS SHOWN ON FLOOD INSURANCE RATE MAP 51095C0119D, DATED DECEMBER 16, 2015.
3. ALL UNITS TO BE SERVED BY PUBLIC WATER AND SEWER.
4. ALL LAND AND IMPROVEMENTS OUTSIDE OF BUILDINGS AND WITHIN PHASE LIMITS SHALL BE KNOWN AS COMMON ELEMENT EXCEPT FOR LIMITED COMMON ELEMENTS DESIGNATED ON PLAT AND BUILDING PLANS.
5. THIS PARCEL OF LAND WAS CONVEYED TO GOVERNOR'S GROVE AT FIVE FORKS, L.L.C. BY DEED RECORDED IN INSTRUMENT #070006512.
6. THE STREETS WITHIN THIS CONDOMINIUM SHALL BE KNOWN AS COMMON ELEMENT AND NOT A PUBLIC DEDICATED RIGHT-OF-WAY.
7. PHASE 7 IS SUBMITTED LAND. THE REMAINING PROPERTY HAS BEEN PREVIOUSLY SUBMITTED OR IS ADDITIONAL LAND. ALL ADDITIONAL LAND AND ALL COMMON ELEMENTS ARE WITHDRAWABLE LAND.
8. PROFFERED COVENANTS, RESTRICTIONS, AND CONDITIONS AFFECTING THIS PROPERTY HAVE BEEN RECORDED AS INST. #050019045.
9. THE LOCATION OF THE PRIVATE MULCH TRAIL AND THE ASPHALT MULTI-PURPOSE TRAIL ARE APPROXIMATE ONLY AND SUBJECT TO CHANGE.



CURVE TABLE					
NO.	DELTA	CHORD BEARING	RADIUS	ARC	CHORD
C1	10°00'21"	S 58°20'41" W	1116.00'	194.89'	194.64'

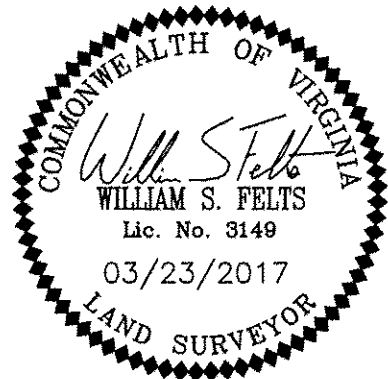
LINE TABLE		
NO.	DIRECTION	DISTANCE
L1	N 10°44'30" W	57.40'
L2	S 27°48'08" E	15.00'
L3	N 62°11'52" E	52.25'
L4	N 73°15'18" E	18.75'
L5	S 53°20'30" W	17.63'
L6	S 58°14'37" W	37.63'
L7	S 60°24'36" W	11.43'
L8	S 70°12'23" W	12.96'

170006746

**SURVEYORS CERTIFICATE**

I HEREBY CERTIFY THAT THE PLAN PREVIOUSLY RECORDED FOR GOVERNOR'S GROVE AT FIVE FORKS, A CONDOMINIUM AT INSTRUMENT NO. 160009184 ACCURATELY DEPICT THE UNITS AND RELATED IMPROVEMENTS SHOWN AND THAT THEY COMPLY WITH THE CODE OF VIRGINIA OF 1950, AS AMENDED 55-79.58(B) AND ARE SUBSTANTIALLY COMPLETE.

I HEREBY CERTIFY THAT THIS PLAT IS ACCURATE AND COMPLIES WITH THE PROVISIONS OF SECTION 55-79.58 (A) OF THE CODE OF VIRGINIA 1950 AS AMENDED.



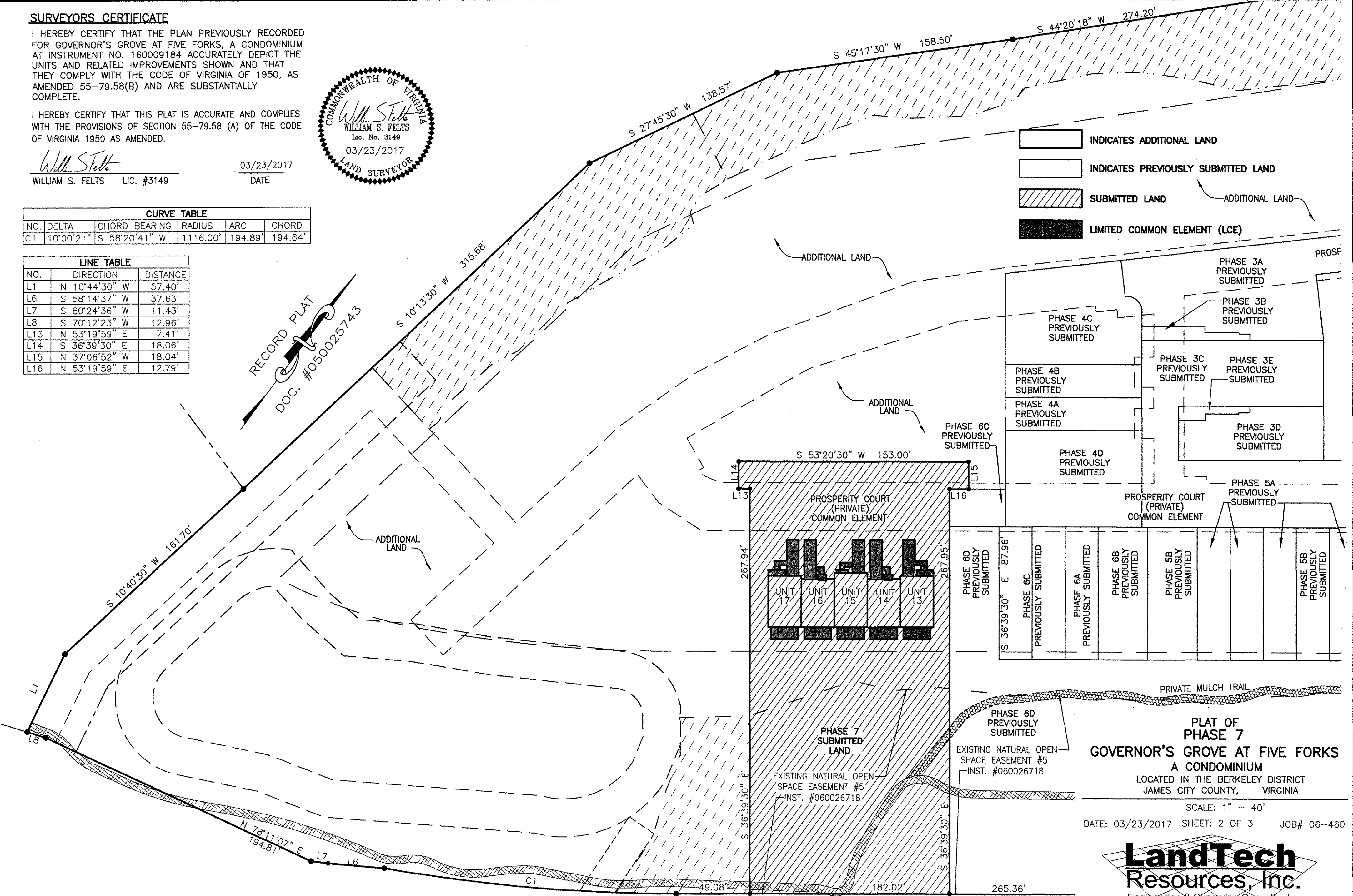
*William S. Felts*  
WILLIAM S. FELTS LIC. #3149

03/23/2017  
DATE

CURVE TABLE				
NO.	DELTA	CHORD BEARING	RADIUS	CHORD
C1	10°00'21"	S 58°20'41" W	1116.00'	194.89'

LINE TABLE		
NO.	DIRECTION	DISTANCE
L1	N 10°44'30" W	57.40'
L6	S 58°14'37" W	37.63'
L7	S 60°24'36" W	11.43'
L8	S 70°12'23" W	12.96'
L13	N 53°19'59" E	7.41'
L14	S 36°39'30" E	18.06'
L15	N 37°06'52" W	18.04'
L16	N 53°19'59" E	12.79'

- INDICATES ADDITIONAL LAND
- INDICATES PREVIOUSLY SUBMITTED LAND
- SUBMITTED LAND
- LIMITED COMMON ELEMENT (LCE)



**PLAT OF PHASE 7**  
**GOVERNOR'S GROVE AT FIVE FORKS**  
A CONDOMINIUM  
LOCATED IN THE BERKELEY DISTRICT  
JAMES CITY COUNTY, VIRGINIA

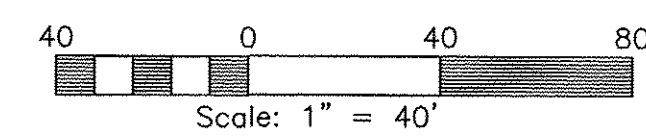
SCALE: 1" = 40'  
DATE: 03/23/2017 SHEET: 2 OF 3 JOB# 06-460



City of Williamsburg & County of James City  
Circuit Court: This PLAT was recorded on  
3-30-2017  
at 9:24 AM PM, PB PG  
Document # 170006746  
MONA A. FOLEY, CLERK

3 Large/Small Plat(s) Recorded  
herewith as # 170006746

CURVE TABLE					
CURVE	RADIUS	LENGTH	CHORD	CHORD BEARING	DELTA
C4	24.50'	36.06'	32.89'	N 12°20'41" E	84°19'13"



JCC Subdivision Agent  
Approval Not Required

170006746

**SURVEYORS CERTIFICATE**

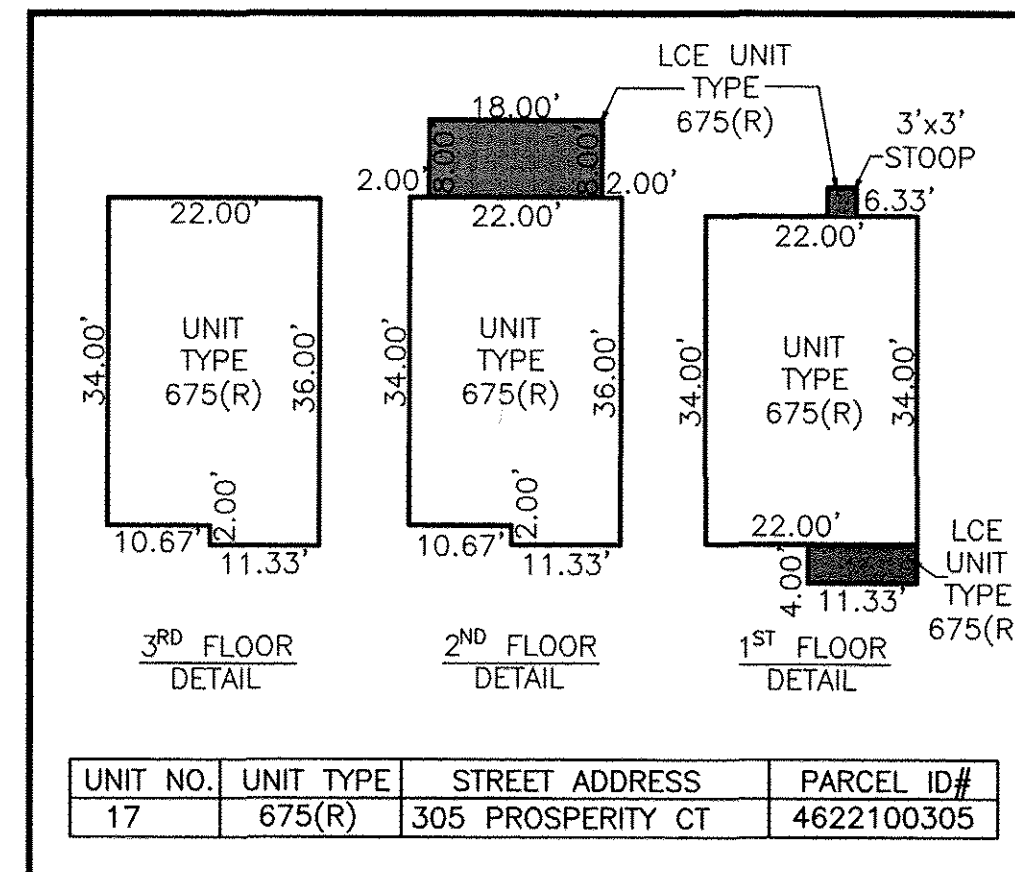
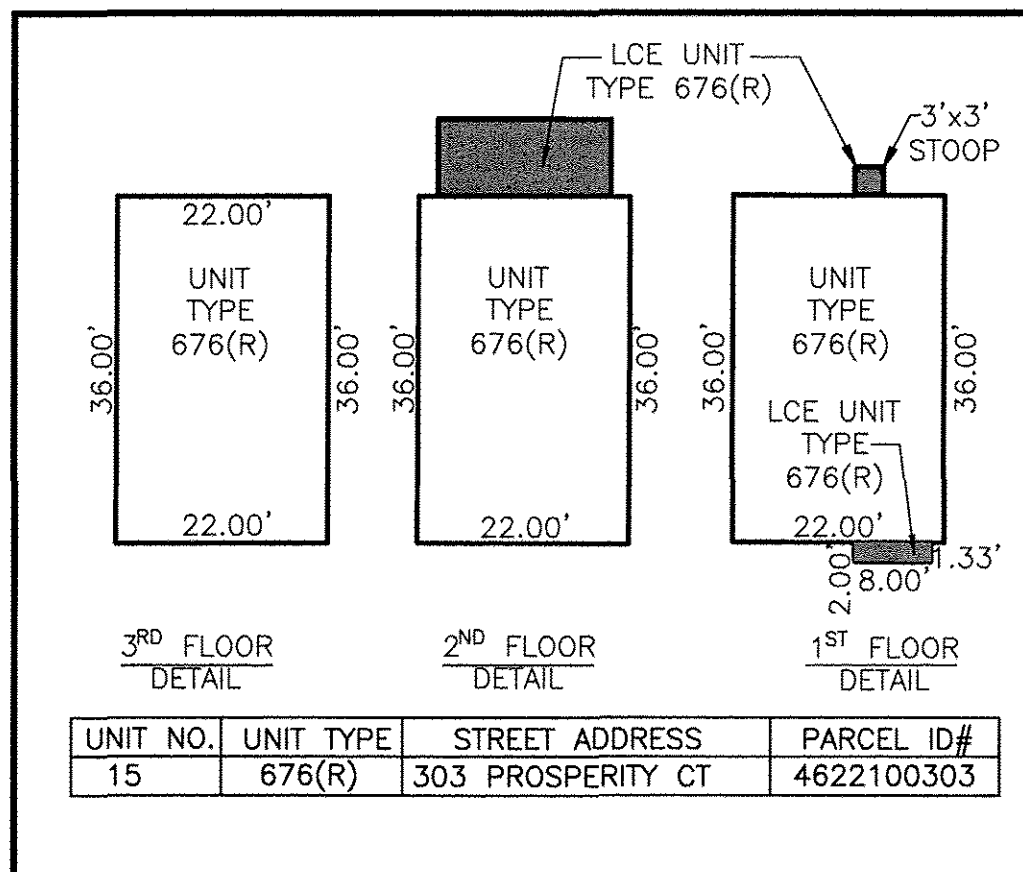
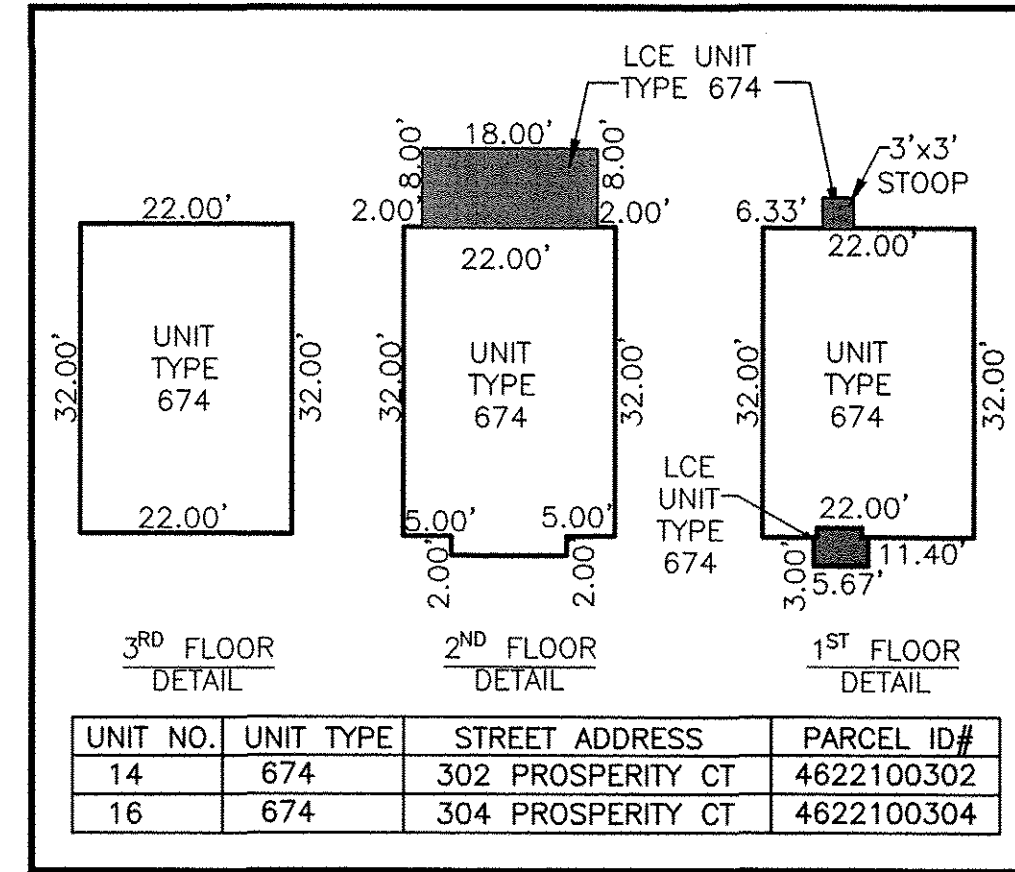
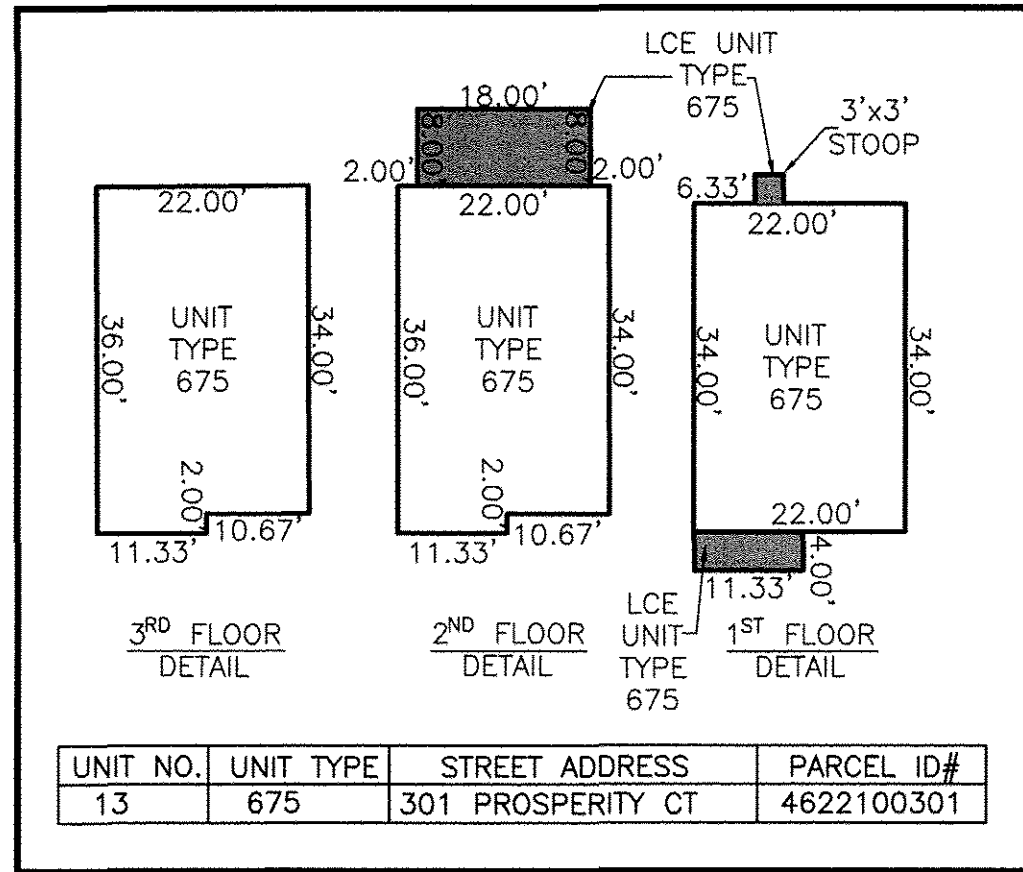
I HEREBY CERTIFY THAT THE PLAN PREVIOUSLY RECORDED FOR GOVERNOR'S GROVE AT FIVE FORKS, A CONDOMINIUM AT INSTRUMENT NO. 160009184 ACCURATELY DEPICT THE UNITS AND RELATED IMPROVEMENTS SHOWN AND THAT THEY COMPLY WITH THE CODE OF VIRGINIA OF 1950, AS AMENDED 55-79.58(B) AND ARE SUBSTANTIALLY COMPLETE.

I HEREBY CERTIFY THAT THIS PLAT IS ACCURATE AND COMPLIES WITH THE PROVISIONS OF SECTION 55-79.58 (A) OF THE CODE OF VIRGINIA 1950 AS AMENDED.



*William S. Felts*  
WILLIAM S. FELTS LIC. #3149

03/23/2017  
DATE



3 Large/Small Plat(s) Recorded  
herewith as # 170006746

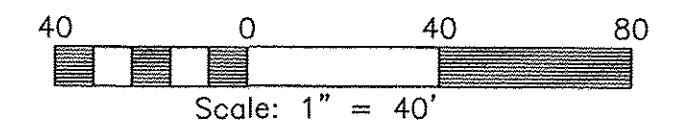
City of Williamsburg & County of James City  
Circuit Court: This PLAT was recorded on  
3-30-2017  
at 9:24 AM PM, PB PG  
Document # 170006746  
MONA A. FOLEY, CLERK  
*Mona A. Foley*, Clerk

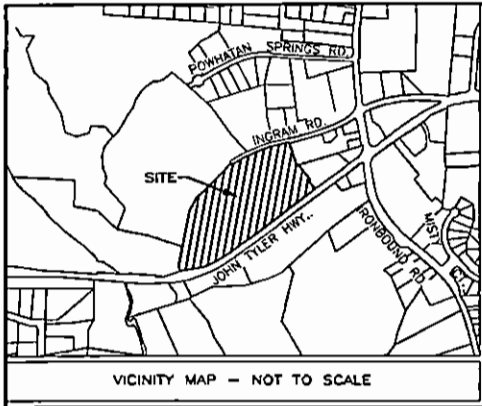
PLAT OF  
PHASE 7  
GOVERNOR'S GROVE AT FIVE FORKS  
A CONDOMINIUM  
LOCATED IN THE BERKELEY DISTRICT  
JAMES CITY COUNTY, VIRGINIA

SCALE: 1" = 40'  
DATE: 03/23/2017 SHEET: 3 OF 3 JOB# 06-460

**LandTech Resources, Inc.**  
Engineering & Surveying Consultants  
3925 Midlands Road, Williamsburg, VA 23188  
Phone: (757) 565-1677 Fax: (757) 565-0782  
web: landtechresources.com

JCC Subdivision Agent  
Approval Not Required *EC*





**SURVEYORS CERTIFICATE**

I HEREBY CERTIFY THAT THE PLAN PREVIOUSLY RECORDED FOR GOVERNOR'S GROVE AT FIVE FORKS, A CONDOMINIUM AT INSTRUMENT NO. 160009184 ACCURATELY DEPICT THE UNITS AND RELATED IMPROVEMENTS SHOWN AND THAT THEY COMPLY WITH THE CODE OF VIRGINIA OF 1950, AS AMENDED 55-79.58(B) AND ARE SUBSTANTIALLY COMPLETE.

I HEREBY CERTIFY THAT THIS PLAT IS ACCURATE AND COMPLIES WITH THE PROVISIONS OF SECTION 55-79.58 (A) OF THE CODE OF VIRGINIA 1950 AS AMENDED.

*William S. Felts*  
 WILLIAM S. FELTS LIC. #3149

03/23/2017  
 DATE

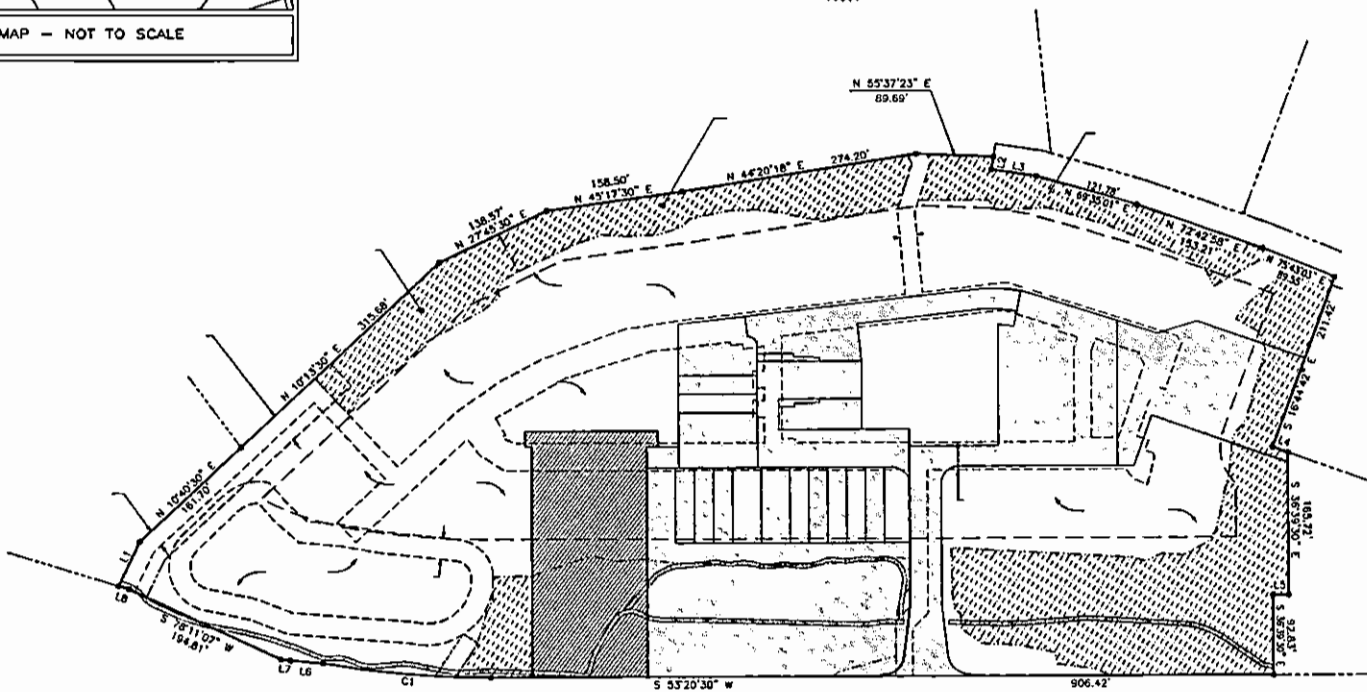




AREA TABLE		
PARCEL	SO. FT.	ACRES
PHASE 7 SUBMITTED LAND	38,385	0.881
PREVIOUSLY SUBMITTED LAND	160,210	4.137
ADDITIONAL LAND	434,641	9.978
TOTAL	653,236	14.996

PLAT OF  
 PHASE 7  
 GOVERNOR'S GROVE AT FIVE FORKS  
 A CONDOMINIUM  
 LOCATED IN THE BERKELEY DISTRICT  
 JAMES CITY COUNTY, VIRGINIA  
 DATE: 03/23/2017 SCALE: 1" = 100' JOB# D6-460  
 SHEET: 1 OF 3

**LandTech Resources, Inc.**  
 Engineering & Surveying Consultants  
 3925 Midlands Road, Williamsburg, VA 23188  
 Phone: (757) 565-1677 Fax: (757) 565-0782  
 web: landtechresources.com

Page 8 of 19



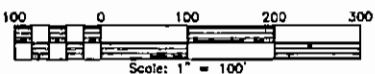
 SUBMITTED LAND  
 PREVIOUSLY SUBMITTED LAND

**GENERAL NOTES**

1. THIS PLAT WAS PRODUCED WITHOUT A TITLE REPORT AND MAY NOT REFLECT ALL MATTERS AFFECTING PROPERTY.
2. THIS PROPERTY APPEARS TO FALL IN ZONE "X" AS SHOWN ON FLOOD INSURANCE RATE MAP 51095001190, DATED DECEMBER 16, 2015.
3. ALL UNITS TO BE SERVED BY PUBLIC WATER AND SEWER.
4. ALL LAND AND IMPROVEMENTS OUTSIDE OF BUILDINGS AND WITHIN PHASE LIMITS SHALL BE KNOWN AS COMMON ELEMENT EXCEPT FOR LIMITED COMMON ELEMENTS DESIGNATED ON PLAT AND BUILDING PLANS.
5. THIS PARCEL OF LAND WAS CONVEYED TO GOVERNOR'S GROVE AT FIVE FORKS, L.L.C. BY DEED RECORDED IN INSTRUMENT #070006512.
6. THE STREETS WITHIN THIS CONDOMINIUM SHALL BE KNOWN AS COMMON ELEMENT AND NOT A PUBLIC DEDICATED RIGHT-OF-WAY.
7. PHASE 7 IS SUBMITTED LAND. THE REMAINING PROPERTY HAS BEEN PREVIOUSLY SUBMITTED OR IS ADDITIONAL LAND. ALL ADDITIONAL LAND AND ALL COMMON ELEMENTS ARE WITHDRAWABLE LAND.
8. PROFFERED COVENANTS, RESTRICTIONS, AND CONDITIONS AFFECTING THIS PROPERTY HAVE BEEN RECORDED AS INST. #050019045.
9. THE LOCATION OF THE PRIVATE MULCH TRAIL AND THE ASPHALT MULTI-PURPOSE TRAIL ARE APPROXIMATE ONLY AND SUBJECT TO CHANGE.

CURVE TABLE					
NO.	DELTA	CHORD BEARING	RADIUS	ARC	CHORD
C1	10°00'21"	S 58°20'41" W	1116.00'	194.88'	194.64'

LINE TABLE		
NO.	DIRECTION	DISTANCE
L1	N 10°44'30" W	57.40'
L2	S 27°48'08" E	15.00'
L3	N 62°11'52" E	52.25'
L4	N 73°15'18" E	18.75'
L5	S 53°20'30" W	17.63'
L6	S 58°14'37" W	37.63'
L7	S 60°24'38" W	11.43'
L8	S 70°12'23" W	12.96'



**SURVEYORS CERTIFICATE**

I HEREBY CERTIFY THAT THE PLAN PREVIOUSLY RECORDED FOR GOVERNOR'S GROVE AT FIVE FORKS, A CONDOMINIUM AT INSTRUMENT NO. 160009184 ACCURATELY DEPICT THE UNITS AND RELATED IMPROVEMENTS SHOWN AND THAT THEY COMPLY WITH THE CODE OF VIRGINIA OF 1950, AS AMENDED 55-79.58(B) AND ARE SUBSTANTIALLY COMPLETE.

I HEREBY CERTIFY THAT THIS PLAT IS ACCURATE AND COMPLIES WITH THE PROVISIONS OF SECTION 55-79.58 (A) OF THE CODE OF VIRGINIA 1950 AS AMENDED.

*William S. Felts*  
 WILLIAM S. FELTS LIC. #3148

03/23/2017  
 DATE

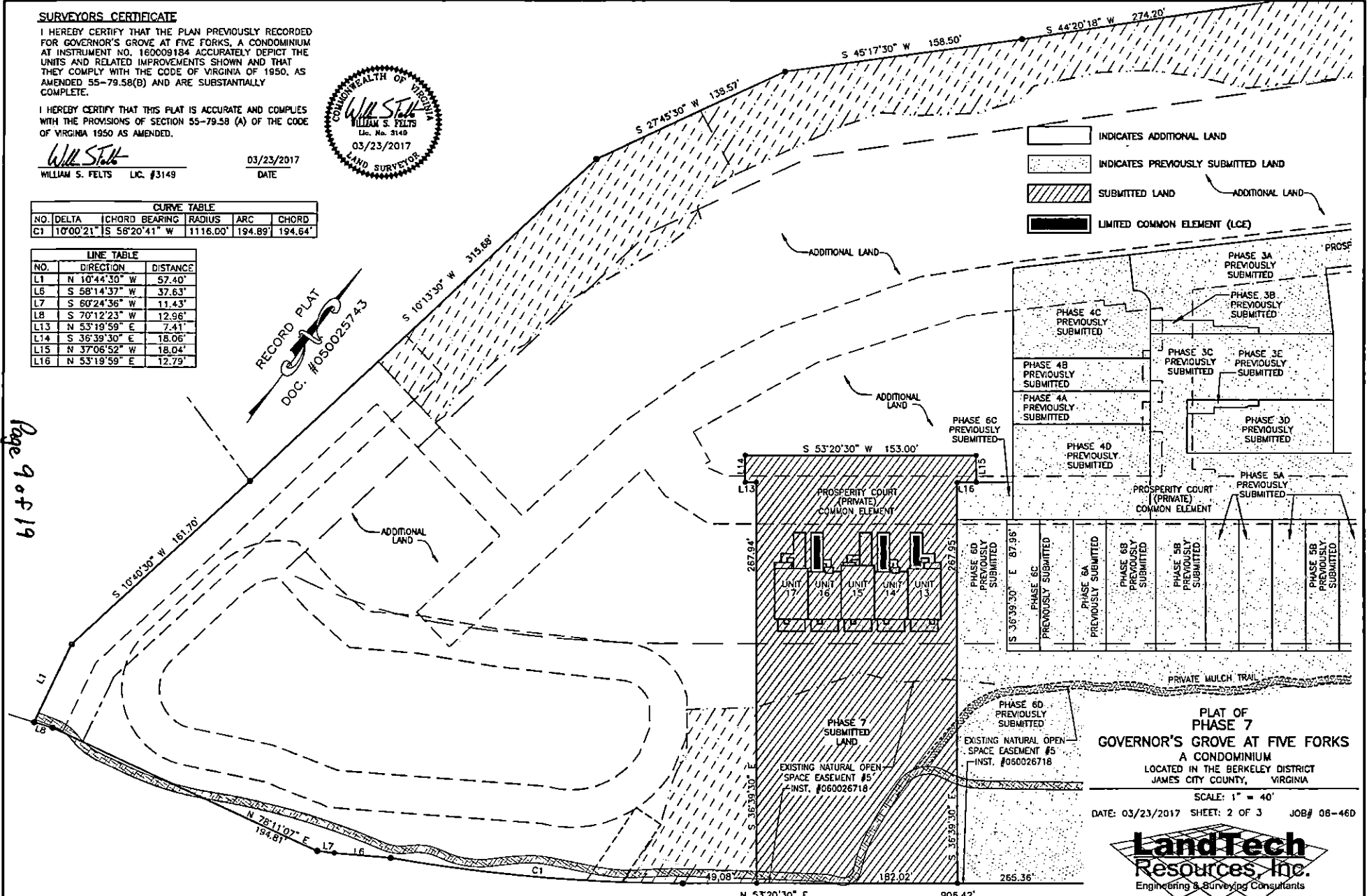


CURVE TABLE					
NO.	DELTA	CHORD BEARING	RADIUS	ARC	CHORD
C1	10°00'21"	S 58°20'41" W	1116.00'	194.89'	194.64'

LINE TABLE		
NO.	DIRECTION	DISTANCE
L1	N 10°44'30" W	57.40'
L6	S 58°14'37" W	37.63'
L7	S 60°24'36" W	11.43'
L8	S 70°12'23" W	12.96'
L13	N 53°19'59" E	7.41'
L14	S 36°39'30" E	18.06'
L15	N 37°06'52" W	18.04'
L16	N 53°19'59" E	12.79'

RECORD PLAT  
 DOC. #050025743

Page 9 of 19



- INDICATES ADDITIONAL LAND
- INDICATES PREVIOUSLY SUBMITTED LAND
- SUBMITTED LAND
- LIMITED COMMON ELEMENT (LCE)

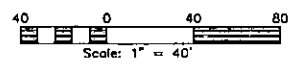
PLAT OF  
**PHASE 7**  
 GOVERNOR'S GROVE AT FIVE FORKS  
 A CONDOMINIUM  
 LOCATED IN THE BERKELEY DISTRICT  
 JAMES CITY COUNTY, VIRGINIA

SCALE: 1" = 40'  
 DATE: 03/23/2017 SHEET: 2 OF 3 JOB# 06-46D



3925 Midlonds Road, Williamsburg, VA 23188  
 Phone: (757) 565-1677 Fax: (757) 565-0782  
 web: landtechresources.com

CURVE TABLE						
CURVE	RADIUS	LENGTH	CHORD	CHORD BEARING	DELTA	
C4	24.50'	36.06'	32.89'	N 12°20'41" E	84°19'13"	



**SURVEYORS CERTIFICATE**

I HEREBY CERTIFY THAT THE PLAN PREVIOUSLY RECORDED FOR GOVERNOR'S GROVE AT FIVE FORKS, A CONDOMINIUM AT INSTRUMENT NO. 160009184 ACCURATELY DEPICT THE UNITS AND RELATED IMPROVEMENTS SHOWN AND THAT THEY COMPLY WITH THE CODE OF VIRGINIA OF 1950, AS AMENDED 55-79.58(B) AND ARE SUBSTANTIALLY COMPLETE.

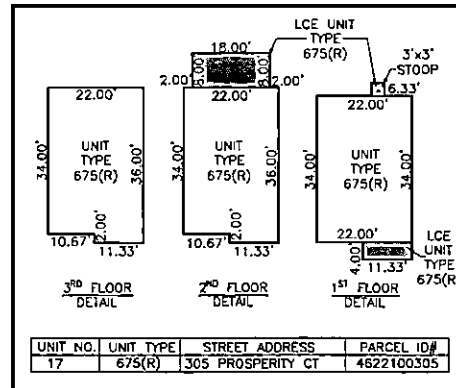
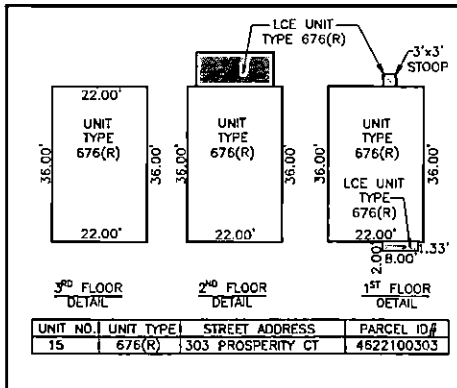
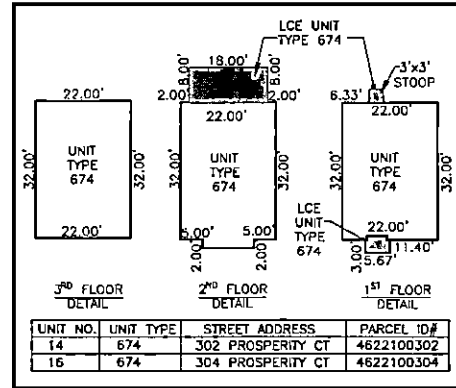
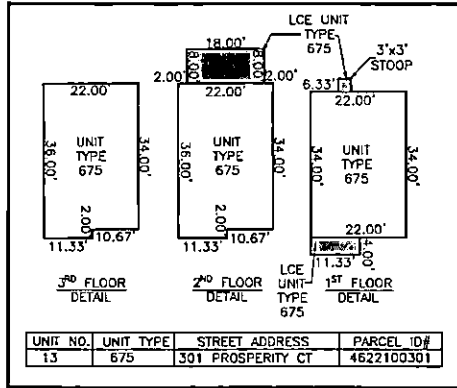
I HEREBY CERTIFY THAT THIS PLAT IS ACCURATE AND COMPLIES WITH THE PROVISIONS OF SECTION 55-79.58 (A) OF THE CODE OF VIRGINIA 1950 AS AMENDED.

*William S. Felts*  
WILLIAM S. FELTS LIC. #3149

03/23/2017  
DATE



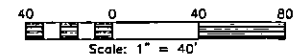
Page 16 of 19



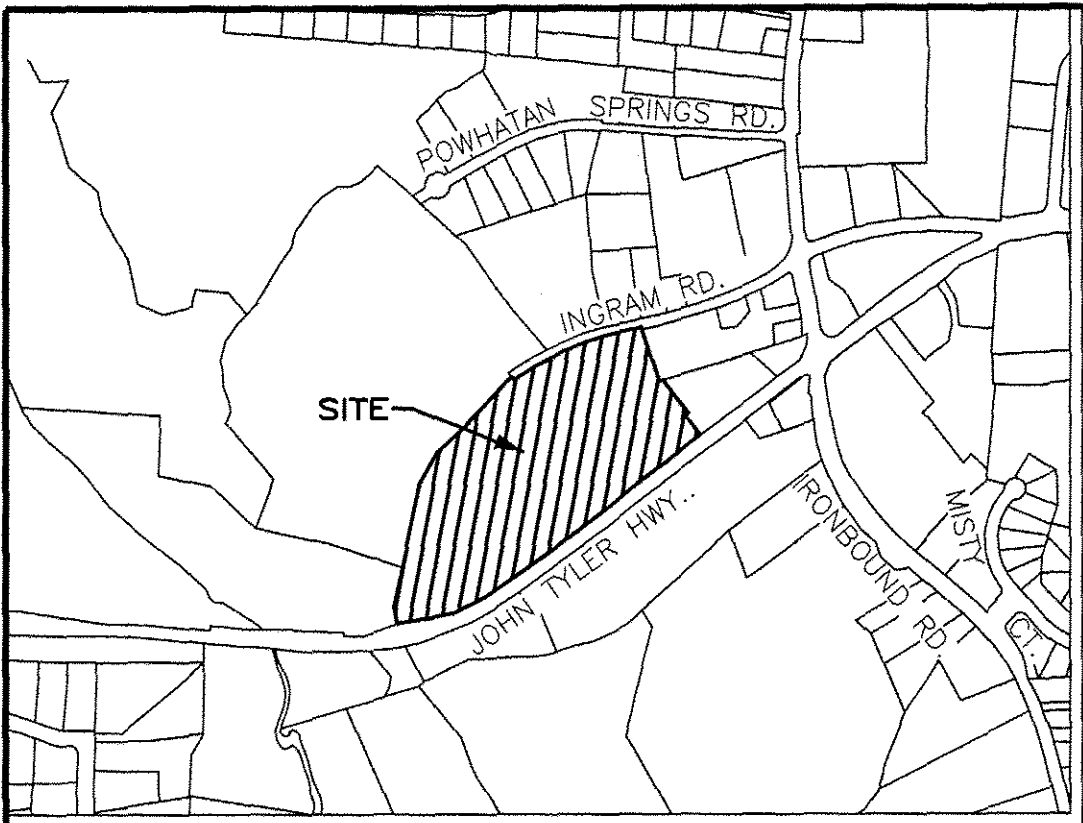
PLAT OF  
PHASE 7  
GOVERNOR'S GROVE AT FIVE FORKS  
A CONDOMINIUM  
LOCATED IN THE BERKELEY DISTRICT  
JAMES CITY COUNTY, VIRGINIA

SCALE: 1" = 40'  
DATE: 03/23/2017 SHEET: 3 OF 3 JOB# 06-460

**LandTech Resources, Inc.**  
Engineering & Surveying Consultants  
3925 Midlans Road, Williamsburg, VA 23188  
Phone: (757) 565-1677 Fax: (757) 565-0782  
web: landtechresources.com



170006746



VICINITY MAP - NOT TO SCALE

**SURVEYORS CERTIFICATE**

I HEREBY CERTIFY THAT THE PLAN PREVIOUSLY RECORDED FOR GOVERNOR'S GROVE AT FIVE FORKS, A CONDOMINIUM AT INSTRUMENT NO. 160009184 ACCURATELY DEPICT THE UNITS AND RELATED IMPROVEMENTS SHOWN AND THAT THEY COMPLY WITH THE CODE OF VIRGINIA OF 1950, AS AMENDED 55-79.58(B) AND ARE SUBSTANTIALLY COMPLETE.

I HEREBY CERTIFY THAT THIS PLAT IS ACCURATE AND COMPLIES WITH THE PROVISIONS OF SECTION 55-79.58 (A) OF THE CODE OF VIRGINIA 1950 AS AMENDED.

*William S. Felts*  
 WILLIAM S. FELTS LIC. #3149

03/23/2017  
 DATE

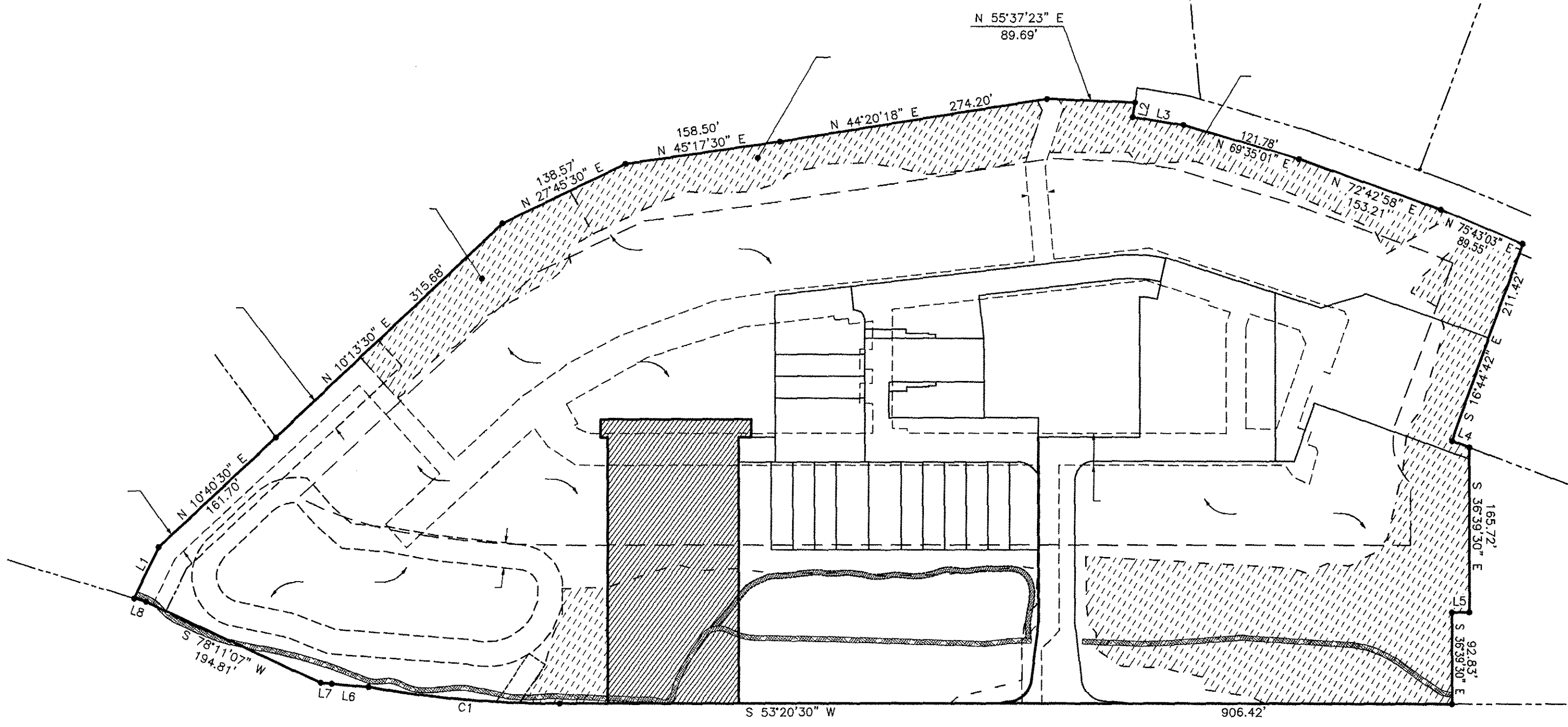
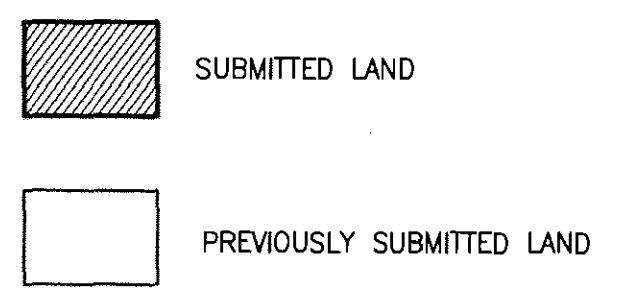


AREA TABLE		
PARCEL	SQ. FT.	ACRES
PHASE 7 SUBMITTED LAND	38,385	0.881
PREVIOUSLY SUBMITTED LAND	180,210	4.137
ADDITIONAL LAND	434,641	9.978
TOTAL	653,236	14.996

PLAT OF  
 PHASE 7  
 GOVERNOR'S GROVE AT FIVE FORKS  
 A CONDOMINIUM  
 LOCATED IN THE BERKELEY DISTRICT  
 JAMES CITY COUNTY, VIRGINIA  
 DATE: 03/23/2017 SCALE: 1" = 100' JOB# 06-460  
 SHEET: 1 OF 3

**LandTech Resources, Inc.**  
 Engineering & Surveying Consultants  
 3925 Midlands Road, Williamsburg, VA 23188  
 Phone: (757) 565-1677 Fax: (757) 565-0782  
 web: landtechresources.com

JCC Subdivision Agent *EC*  
 Approval Not Required

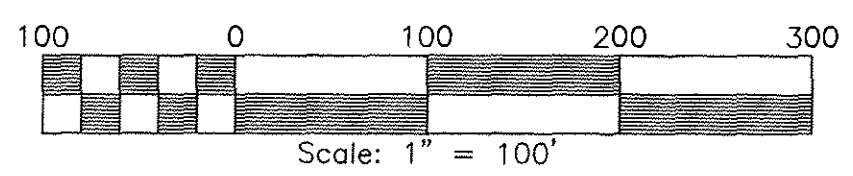


3 Large Small Plat(s) Recorded  
 herewith as # 170006746

City of Williamsburg & County of James City  
 Circuit Court: This PLAT was recorded on  
 3-30-2017  
 at 9:24 AM PM, PB PG  
 Document # 170006746  
 MONA A. FOLEY, CLERK  
*Mona A. Foley*, Clerk

**GENERAL NOTES**

1. THIS PLAT WAS PRODUCED WITHOUT A TITLE REPORT AND MAY NOT REFLECT ALL MATTERS AFFECTING PROPERTY.
2. THIS PROPERTY APPEARS TO FALL IN ZONE "X" AS SHOWN ON FLOOD INSURANCE RATE MAP 51095C0119D, DATED DECEMBER 16, 2015.
3. ALL UNITS TO BE SERVED BY PUBLIC WATER AND SEWER.
4. ALL LAND AND IMPROVEMENTS OUTSIDE OF BUILDINGS AND WITHIN PHASE LIMITS SHALL BE KNOWN AS COMMON ELEMENT EXCEPT FOR LIMITED COMMON ELEMENTS DESIGNATED ON PLAT AND BUILDING PLANS.
5. THIS PARCEL OF LAND WAS CONVEYED TO GOVERNOR'S GROVE AT FIVE FORKS, L.L.C. BY DEED RECORDED IN INSTRUMENT #070006512.
6. THE STREETS WITHIN THIS CONDOMINIUM SHALL BE KNOWN AS COMMON ELEMENT AND NOT A PUBLIC DEDICATED RIGHT-OF-WAY.
7. PHASE 7 IS SUBMITTED LAND. THE REMAINING PROPERTY HAS BEEN PREVIOUSLY SUBMITTED OR IS ADDITIONAL LAND. ALL ADDITIONAL LAND AND ALL COMMON ELEMENTS ARE WITHDRAWABLE LAND.
8. PROFFERED COVENANTS, RESTRICTIONS, AND CONDITIONS AFFECTING THIS PROPERTY HAVE BEEN RECORDED AS INST. #050019045.
9. THE LOCATION OF THE PRIVATE MULCH TRAIL AND THE ASPHALT MULTI-PURPOSE TRAIL ARE APPROXIMATE ONLY AND SUBJECT TO CHANGE.



CURVE TABLE					
NO.	DELTA	CHORD BEARING	RADIUS	ARC	CHORD
C1	10°00'21"	S 58°20'41" W	1116.00'	194.89'	194.64'

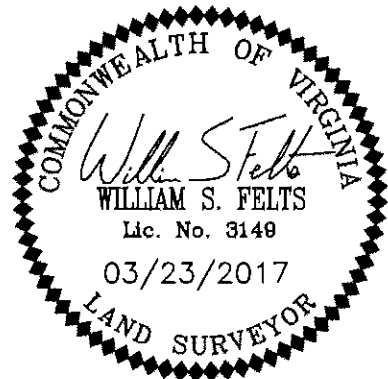
LINE TABLE		
NO.	DIRECTION	DISTANCE
L1	N 10°44'30" W	57.40'
L2	S 27°48'08" E	15.00'
L3	N 62°11'52" E	52.25'
L4	N 73°15'18" E	18.75'
L5	S 53°20'30" W	17.63'
L6	S 58°14'37" W	37.63'
L7	S 60°24'36" W	11.43'
L8	S 70°12'23" W	12.96'

170006746

**SURVEYORS CERTIFICATE**

I HEREBY CERTIFY THAT THE PLAN PREVIOUSLY RECORDED FOR GOVERNOR'S GROVE AT FIVE FORKS, A CONDOMINIUM AT INSTRUMENT NO. 160009184 ACCURATELY DEPICT THE UNITS AND RELATED IMPROVEMENTS SHOWN AND THAT THEY COMPLY WITH THE CODE OF VIRGINIA OF 1950, AS AMENDED 55-79.58(B) AND ARE SUBSTANTIALLY COMPLETE.

I HEREBY CERTIFY THAT THIS PLAT IS ACCURATE AND COMPLIES WITH THE PROVISIONS OF SECTION 55-79.58 (A) OF THE CODE OF VIRGINIA 1950 AS AMENDED.



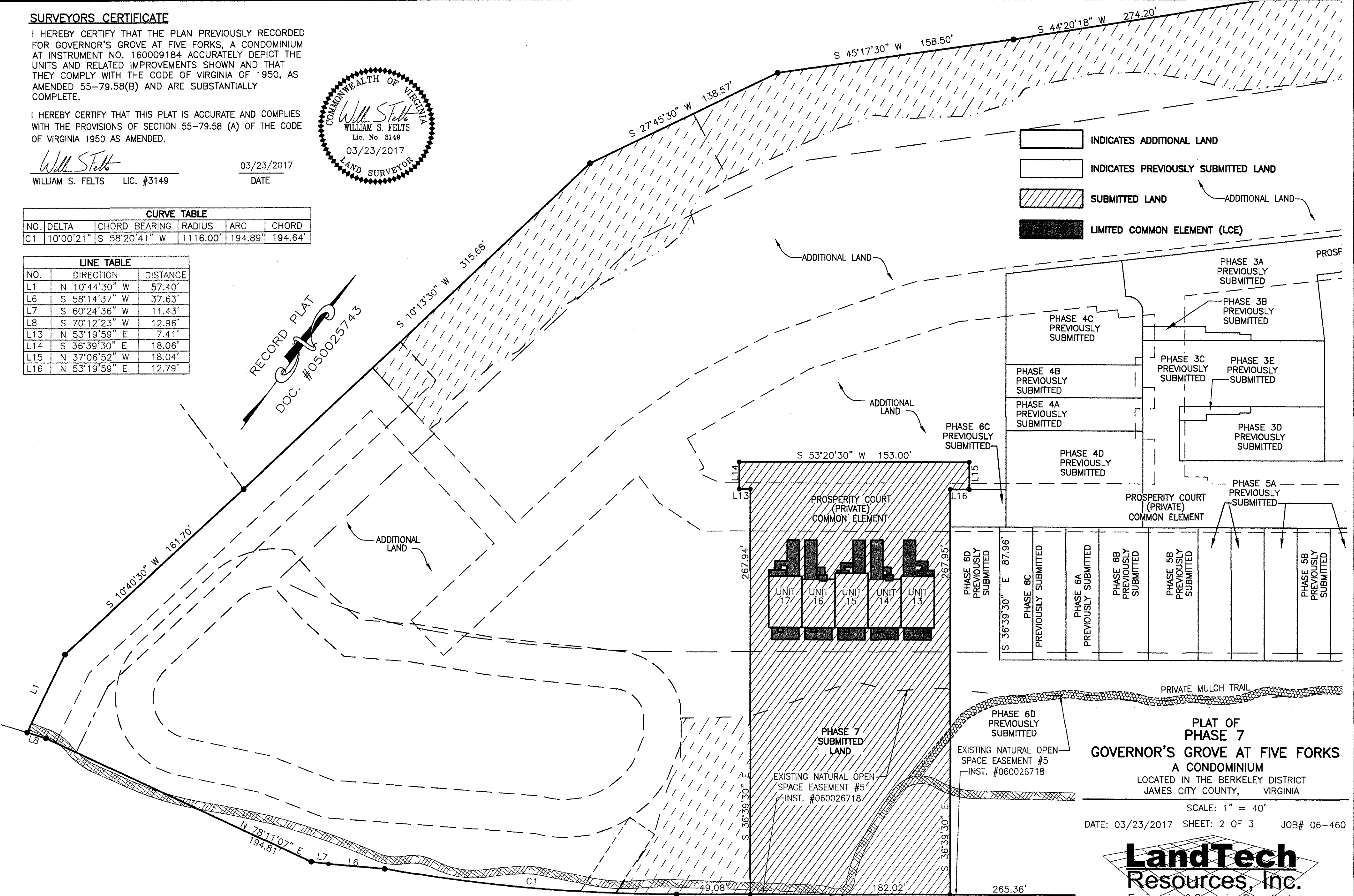
*William S. Felts*  
WILLIAM S. FELTS LIC. #3149

03/23/2017  
DATE

CURVE TABLE				
NO.	DELTA	CHORD BEARING	RADIUS	CHORD
C1	10°00'21"	S 58°20'41" W	1116.00'	194.89'

LINE TABLE		
NO.	DIRECTION	DISTANCE
L1	N 10°44'30" W	57.40'
L6	S 58°14'37" W	37.63'
L7	S 60°24'36" W	11.43'
L8	S 70°12'23" W	12.96'
L13	N 53°19'59" E	7.41'
L14	S 36°39'30" E	18.06'
L15	N 37°06'52" W	18.04'
L16	N 53°19'59" E	12.79'

- INDICATES ADDITIONAL LAND
- INDICATES PREVIOUSLY SUBMITTED LAND
- SUBMITTED LAND
- LIMITED COMMON ELEMENT (LCE)



**PLAT OF PHASE 7**  
**GOVERNOR'S GROVE AT FIVE FORKS**  
A CONDOMINIUM  
LOCATED IN THE BERKELEY DISTRICT  
JAMES CITY COUNTY, VIRGINIA

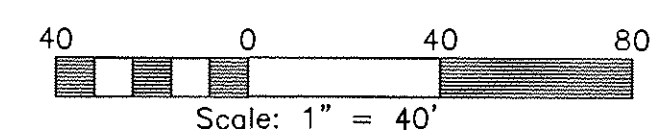
SCALE: 1" = 40'  
DATE: 03/23/2017 SHEET: 2 OF 3 JOB# 06-460



City of Williamsburg & County of James City  
Circuit Court: This PLAT was recorded on  
3-30-2017  
at 9:24 AM PM, PB — PG —  
Document # 170006746  
MONA A. FOLEY, CLERK  
*Mona A. Foley*, Clerk

3 Large/Small Plat(s) Recorded  
herewith as # 170006746

CURVE TABLE					
CURVE	RADIUS	LENGTH	CHORD	CHORD BEARING	DELTA
C4	24.50'	36.06'	32.89'	N 12°20'41" E	84°19'13"



JCC Subdivision Agent  
Approval Not Required *EL*



170006746

**SURVEYORS CERTIFICATE**

I HEREBY CERTIFY THAT THE PLAN PREVIOUSLY RECORDED FOR GOVERNOR'S GROVE AT FIVE FORKS, A CONDOMINIUM AT INSTRUMENT NO. 160009184 ACCURATELY DEPICT THE UNITS AND RELATED IMPROVEMENTS SHOWN AND THAT THEY COMPLY WITH THE CODE OF VIRGINIA OF 1950, AS AMENDED 55-79.58(B) AND ARE SUBSTANTIALLY COMPLETE.

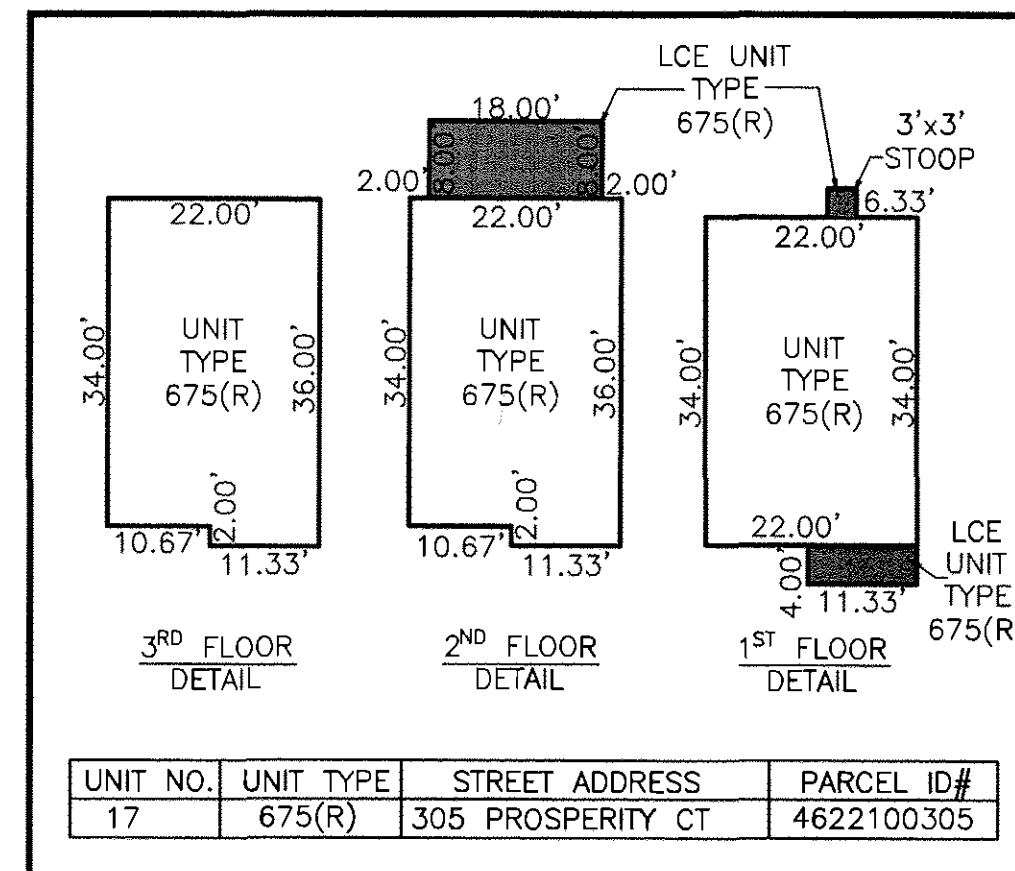
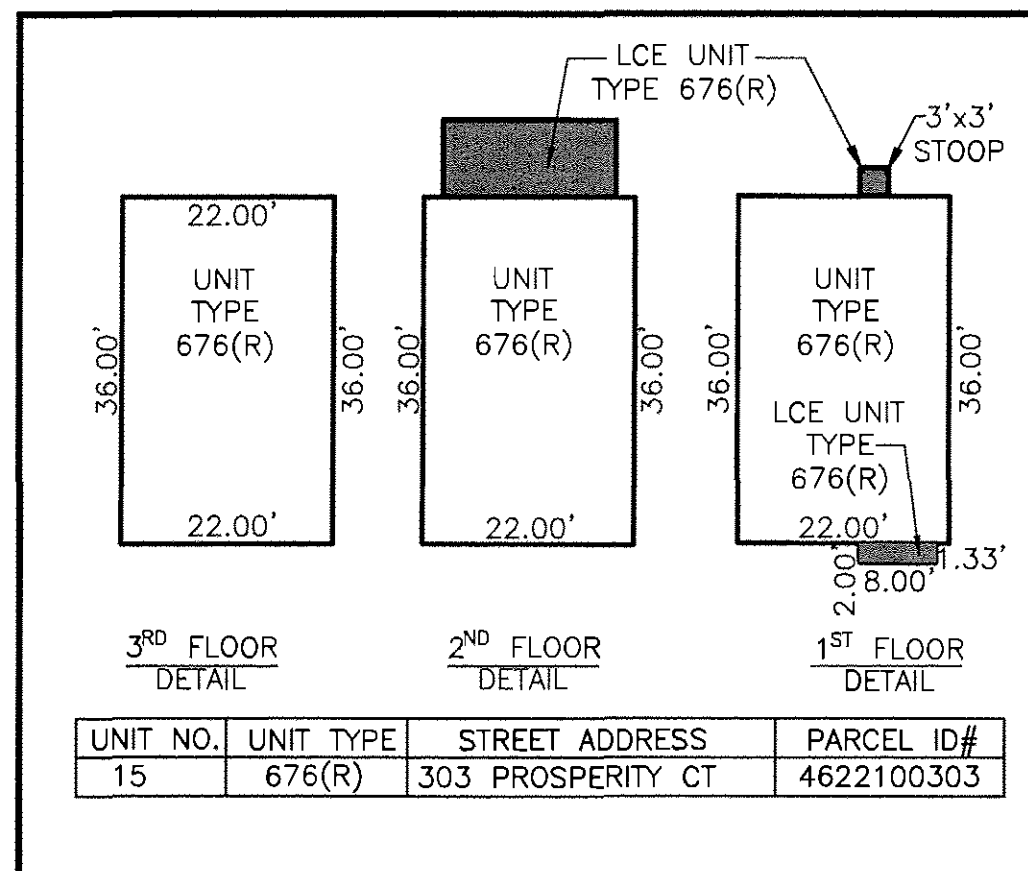
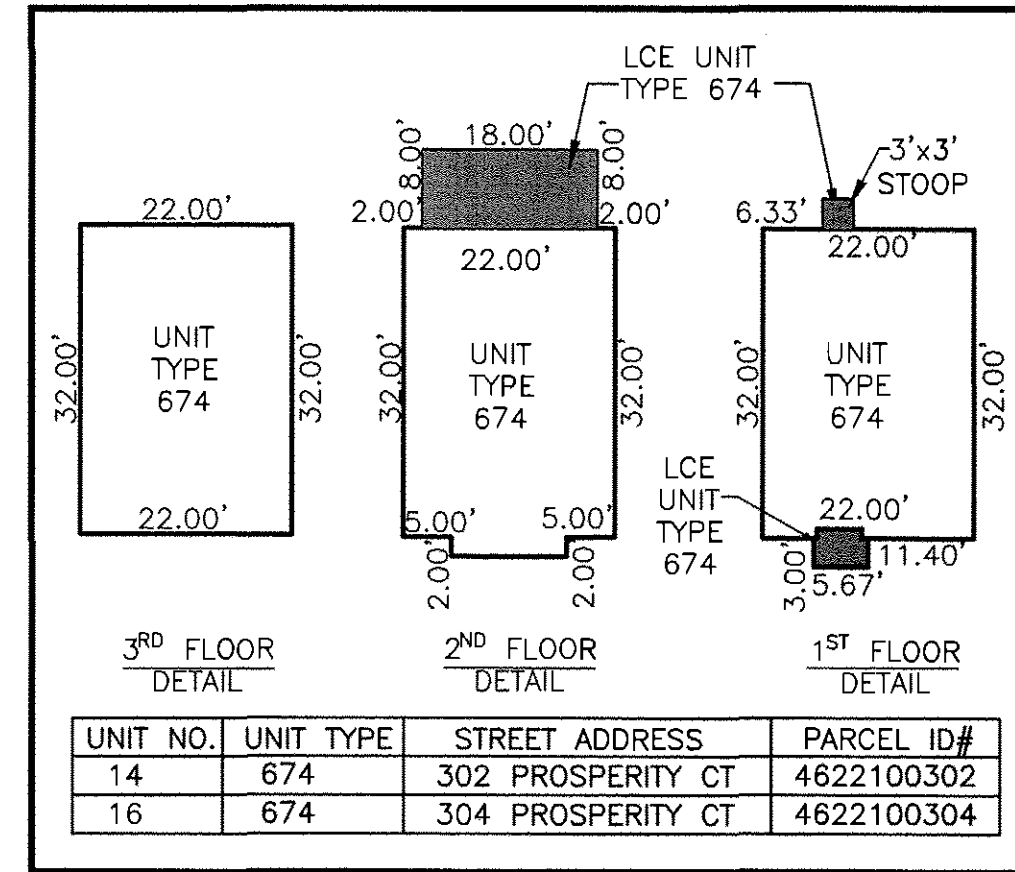
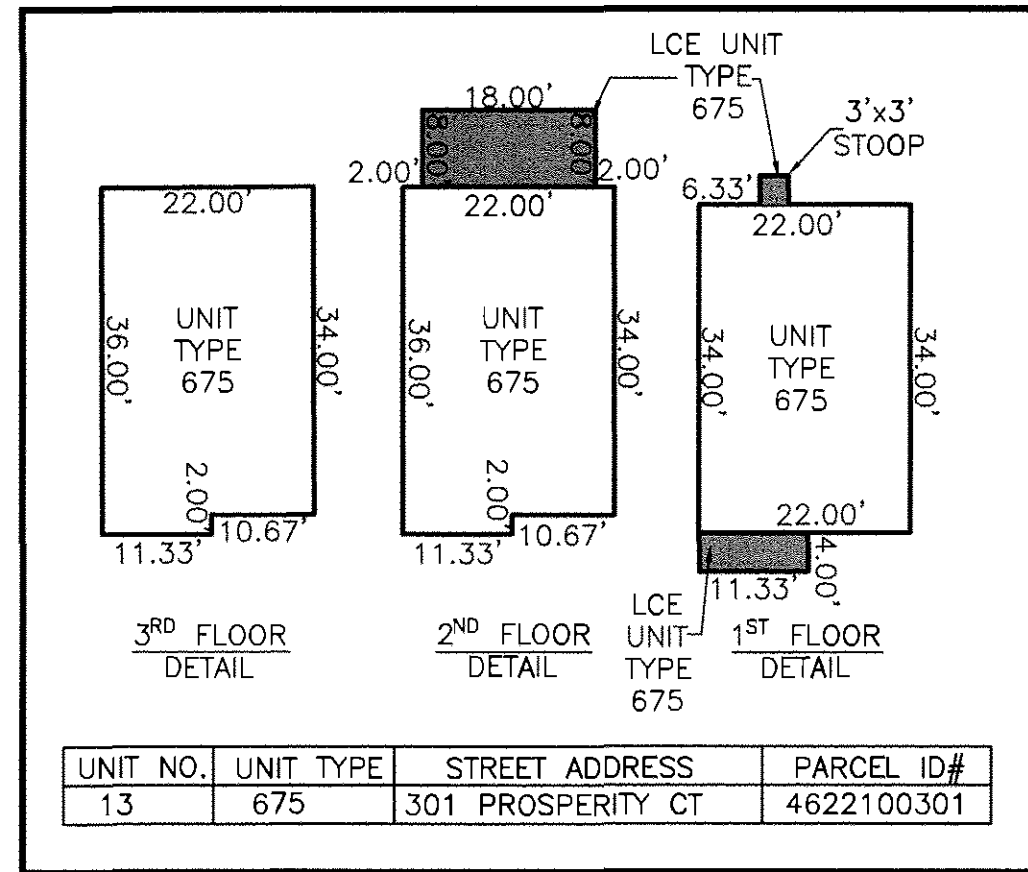
I HEREBY CERTIFY THAT THIS PLAT IS ACCURATE AND COMPLIES WITH THE PROVISIONS OF SECTION 55-79.58 (A) OF THE CODE OF VIRGINIA 1950 AS AMENDED.



*William S. Felts*

WILLIAM S. FELTS LIC. #3149

03/23/2017  
DATE



3 Large/Small Plat(s) Recorded  
herewith as # 170006746

City of Williamsburg & County of James City  
Circuit Court: This PLAT was recorded on  
3-30-2017  
at 9:24 AM PM, PB PG  
Document # 170006746  
MONA A. FOLEY, CLERK  
*Mona A. Foley*, Clerk

PLAT OF  
PHASE 7  
GOVERNOR'S GROVE AT FIVE FORKS  
A CONDOMINIUM  
LOCATED IN THE BERKELEY DISTRICT  
JAMES CITY COUNTY, VIRGINIA

SCALE: 1" = 40'  
DATE: 03/23/2017 SHEET: 3 OF 3 JOB# 06-460

**LandTech Resources, Inc.**  
Engineering & Surveying Consultants  
3925 Midlands Road, Williamsburg, VA 23188  
Phone: (757) 565-1677 Fax: (757) 565-0782  
web: landtechresources.com

JCC Subdivision Agent  
Approval Not Required *EC*

