

170006746

SURVEYORS CERTIFICATE

I HEREBY CERTIFY THAT THE PLAN PREVIOUSLY RECORDED FOR GOVERNOR'S GROVE AT FIVE FORKS, A CONDOMINIUM AT INSTRUMENT NO. 160009184 ACCURATELY DEPICT THE UNITS AND RELATED IMPROVEMENTS SHOWN AND THAT THEY COMPLY WITH THE CODE OF VIRGINIA OF 1950, AS AMENDED 55-79.58(B) AND ARE SUBSTANTIALLY COMPLETE.

I HEREBY CERTIFY THAT THIS PLAT IS ACCURATE AND COMPLIES WITH THE PROVISIONS OF SECTION 55-79.58 (A) OF THE CODE OF VIRGINIA 1950 AS AMENDED.

William S. Felts
WILLIAM S. FELTS LIC. #3149

03/23/2017
DATE

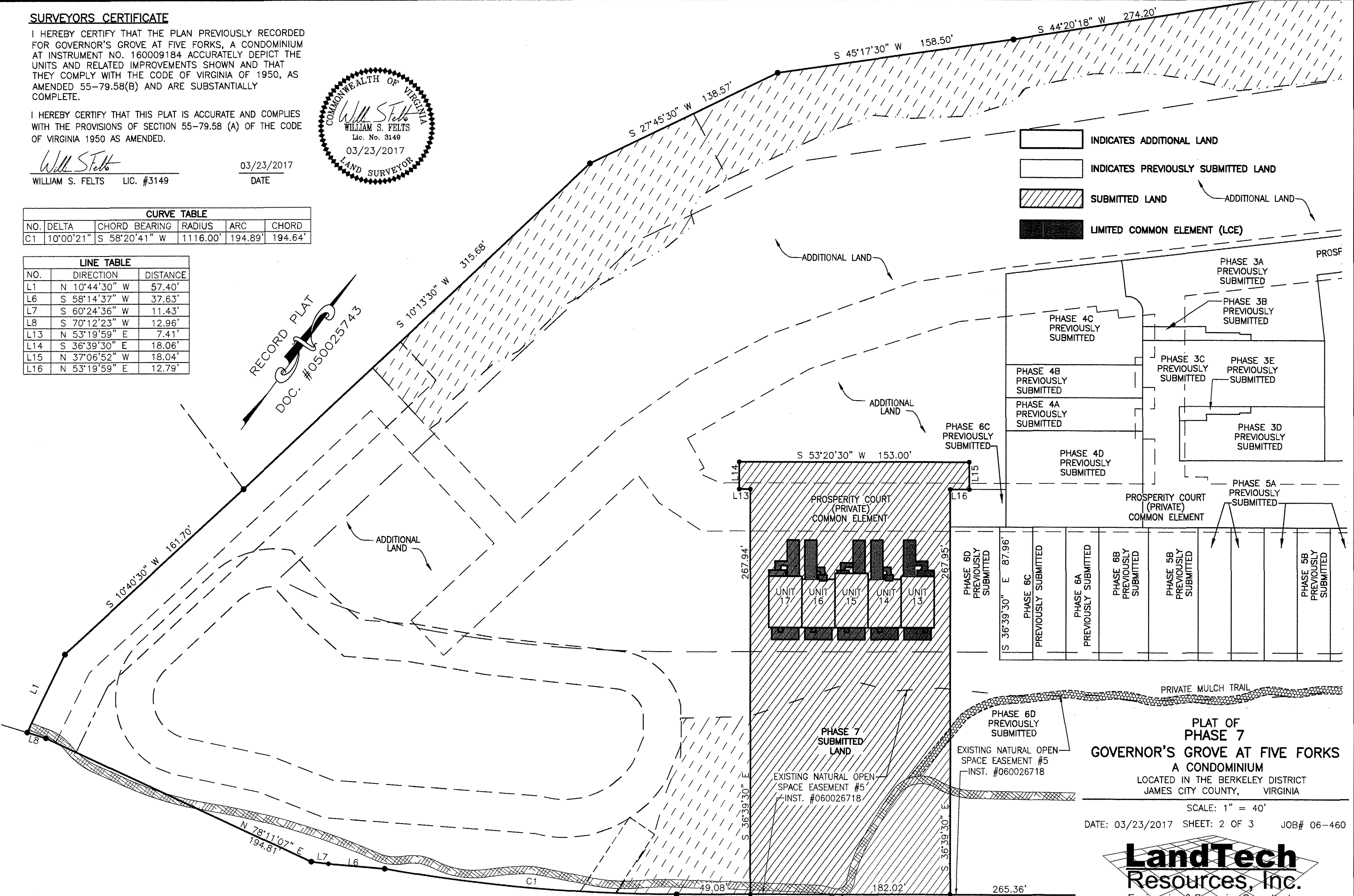


CURVE TABLE				
NO.	DELTA	CHORD BEARING	RADIUS	CHORD
C1	10°00'21"	S 58°20'41" W	1116.00'	194.89'

LINE TABLE		
NO.	DIRECTION	DISTANCE
L1	N 10°44'30" W	57.40'
L6	S 58°14'37" W	37.63'
L7	S 60°24'36" W	11.43'
L8	S 70°12'23" W	12.96'
L13	N 53°19'59" E	7.41'
L14	S 36°39'30" E	18.06'
L15	N 37°06'52" W	18.04'
L16	N 53°19'59" E	12.79'

RECORD PLAT
DOC. #050025743

- INDICATES ADDITIONAL LAND
- INDICATES PREVIOUSLY SUBMITTED LAND
- SUBMITTED LAND
- LIMITED COMMON ELEMENT (LCE)



PLAT OF PHASE 7
GOVERNOR'S GROVE AT FIVE FORKS
A CONDOMINIUM
LOCATED IN THE BERKELEY DISTRICT
JAMES CITY COUNTY, VIRGINIA

SCALE: 1" = 40'
DATE: 03/23/2017 SHEET: 2 OF 3 JOB# 06-460

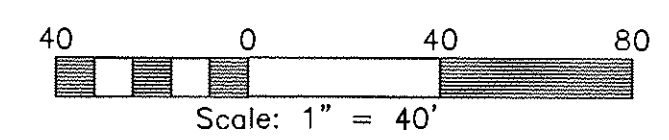


3925 Midlands Road, Williamsburg, VA 23188
Phone: (757) 565-1677 Fax: (757) 565-0782
web: landtechresources.com

City of Williamsburg & County of James City
Circuit Court: This PLAT was recorded on
3-30-2017
at 9:24 AM PM, PB PG
Document # 170006746
MONA A. FOLEY, CLERK

3 Large/Small Plat(s) Recorded
herewith as # 170006746

CURVE TABLE					
CURVE	RADIUS	LENGTH	CHORD	CHORD BEARING	DELTA
C4	24.50'	36.06'	32.89'	N 12°20'41" E	84°19'13"



JCC Subdivision Agent
Approval Not Required