

SURVEYORS CERTIFICATE

I HEREBY CERTIFY THAT THE PLAN PREVIOUSLY RECORDED FOR GOVERNOR'S GROVE AT FIVE FORKS, A CONDOMINIUM AT INSTRUMENT NO. 160009184 ACCURATELY DEPICT THE UNITS AND RELATED IMPROVEMENTS SHOWN AND THAT THEY COMPLY WITH THE CODE OF VIRGINIA OF 1950, AS AMENDED 55-79.58(B) AND ARE SUBSTANTIALLY COMPLETE.

I HEREBY CERTIFY THAT THIS PLAT IS ACCURATE AND COMPLIES WITH THE PROVISIONS OF SECTION 55-79.58 (A) OF THE CODE OF VIRGINIA 1950 AS AMENDED.

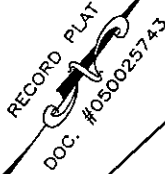
William S. Felts
 WILLIAM S. FELTS LIC. #3148

03/23/2017
 DATE

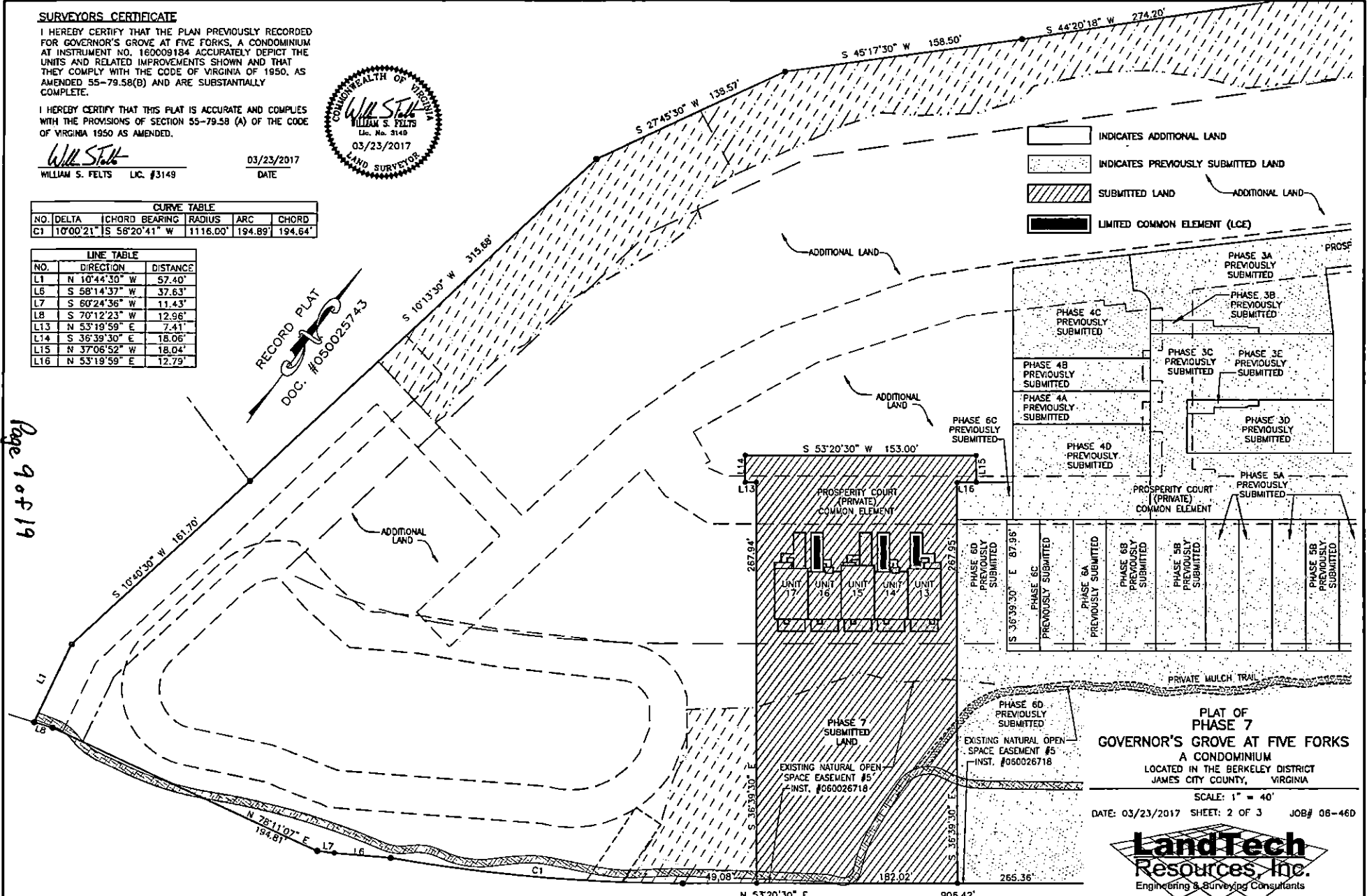


| CURVE TABLE | | | | | |
|-------------|-----------|---------------|----------|---------|---------|
| NO. | DELTA | CHORD BEARING | RADIUS | ARC | CHORD |
| C1 | 10°00'21" | S 58°20'41" W | 1116.00' | 194.89' | 194.64' |

| LINE TABLE | | |
|------------|---------------|----------|
| NO. | DIRECTION | DISTANCE |
| L1 | N 10°44'30" W | 57.40' |
| L6 | S 58°14'37" W | 37.63' |
| L7 | S 60°24'36" W | 11.43' |
| L8 | S 70°12'23" W | 12.96' |
| L13 | N 53°19'59" E | 7.41' |
| L14 | S 36°39'30" E | 18.06' |
| L15 | N 37°06'52" W | 18.04' |
| L16 | N 53°19'59" E | 12.79' |



Page 9 of 19



- INDICATES ADDITIONAL LAND
- INDICATES PREVIOUSLY SUBMITTED LAND
- SUBMITTED LAND
- LIMITED COMMON ELEMENT (LCE)

PLAT OF PHASE 7
GOVERNOR'S GROVE AT FIVE FORKS
 A CONDOMINIUM
 LOCATED IN THE BERKELEY DISTRICT
 JAMES CITY COUNTY, VIRGINIA

SCALE: 1" = 40'
 DATE: 03/23/2017 SHEET: 2 OF 3 JOB# 06-46D



3925 Midlonds Road, Williamsburg, VA 23188
 Phone: (757) 565-1677 Fax: (757) 565-0782
 web: landtechresources.com

| CURVE TABLE | | | | | | |
|-------------|--------|--------|--------|---------------|-----------|--|
| CURVE | RADIUS | LENGTH | CHORD | CHORD BEARING | DELTA | |
| C4 | 24.50' | 36.06' | 32.89' | N 12°20'41" E | 84°19'13" | |

