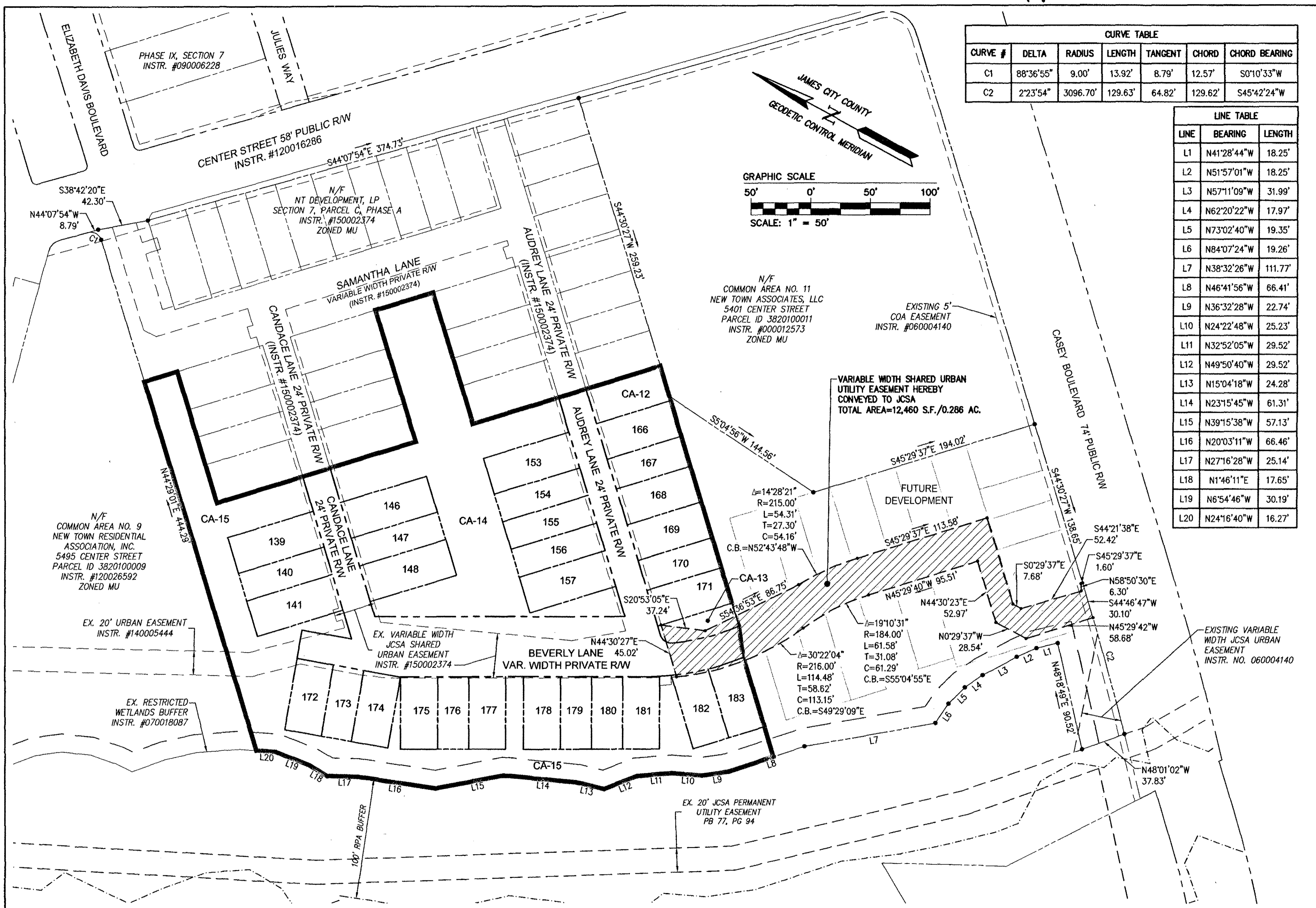
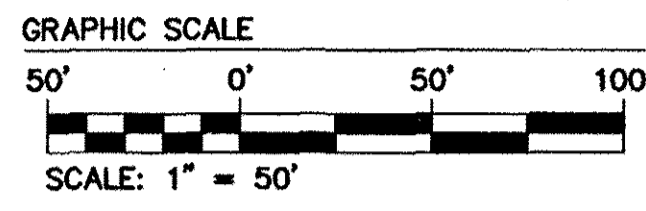


170005636

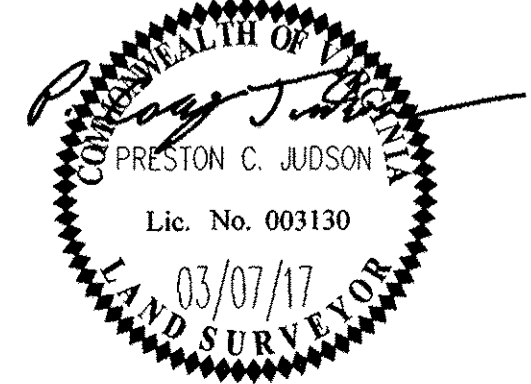


CURVE TABLE						
CURVE #	DELTA	RADIUS	LENGTH	TANGENT	CHORD	CHORD BEARING
C1	88°36'55"	9.00'	13.92'	8.79'	12.57'	S0°10'33"W
C2	2°23'54"	3096.70'	129.63'	64.82'	129.62'	S45°42'24"W

LINE TABLE		
LINE	BEARING	LENGTH
L1	N41°28'44"W	18.25'
L2	N51°57'01"W	18.25'
L3	N57°11'09"W	31.99'
L4	N62°20'22"W	17.97'
L5	N73°02'40"W	19.35'
L6	N84°07'24"W	19.26'
L7	N38°32'26"W	111.77'
L8	N46°41'56"W	66.41'
L9	N36°32'28"W	22.74'
L10	N24°22'48"W	25.23'
L11	N32°52'05"W	29.52'
L12	N49°50'40"W	29.52'
L13	N15°04'18"W	24.28'
L14	N23°15'45"W	61.31'
L15	N39°15'38"W	57.13'
L16	N20°03'11"W	66.46'
L17	N27°16'28"W	25.14'
L18	N1°46'11"E	17.65'
L19	N6°54'46"W	30.19'
L20	N24°16'40"W	16.27'



3 Large/Small Plat(s) Recorded
 Herewith as # 170005636
 at 10:31 AM/PM, PB PG
 Document # 170005636
 MONA A. FOLEY, CLERK
 2 12/09/16 REVISION
 1 11/16/16 REVISION
 Rev. Date Description RMS Revised By



AES
 CONSULTING ENGINEERS
 5248 Olde Towne Road, Suite 1
 Williamsburg, Virginia 23188
 Phone: (757) 253-0040
 Fax: (757) 220-8994
 www.aesva.com

PLAT OF SUBDIVISION
 SECTION 7, PARCEL C, PHASE B
 NEW TOWN
 LOTS 139-141, 146-148, 153-157, 166-183
 AND CA-12, CA-13, CA-14, AND CA-15
 OWNED BY NT DEVELOPMENT, LP
 JAMESTOWN DISTRICT JAMES CITY COUNTY VIRGINIA

Project Contacts: PCJ/RMS
 Project Number: 6632-07-09
 Scale: 1"=50' Date: 9/16/2016
 Sheet Number
3 of 3