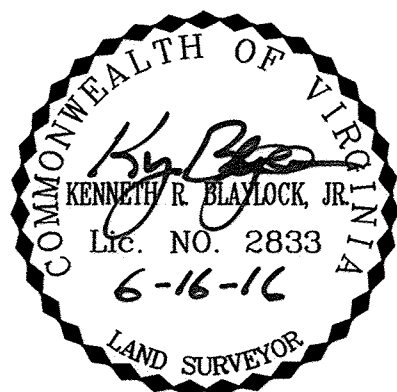


165423

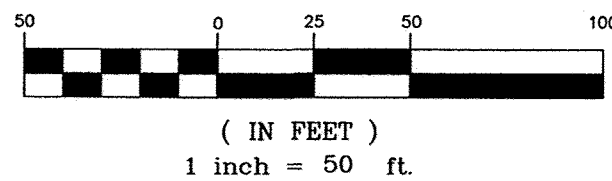
CURVE TABLE						
CURVE	LENGTH	RADIUS	DELTA	TANGENT	CHORD BEARING	CHORD
C1	219.12'	1051.35'	11°56'30"	109.96'	S26°06'29"E	218.73'
C2	140.87'	1262.91'	6°23'27"	70.51'	N42°40'26"E	140.80'
C3	38.03'	17.00'	128°11'24"	35.00'	S70°02'26"E	30.58'
C4	47.79'	45.00'	60°50'32"	26.42'	N24°28'32"E	45.57'
C5	17.57'	1051.35'	0°57'26"	8.78'	S31°36'00"E	17.57'
C6	61.18'	40.00'	87°38'12"	38.38'	S26°01'13"W	55.39'
C7	7.85'	5.00'	90°00'00"	5.00'	N65°09'42"W	7.07'
C8	7.85'	5.00'	90°00'00"	5.00'	S24°50'18"W	7.07'
C9	31.42'	20.00'	90°00'00"	20.00'	N65°09'42"W	28.28'
C10	7.85'	5.00'	90°00'00"	5.00'	N24°50'18"E	7.07'
C11	7.85'	5.00'	90°00'00"	5.00'	N65°09'42"W	7.07'
C12	137.50'	1051.35'	7°29'36"	68.85'	S27°22'29"E	137.40'
C13	64.06'	1051.35'	3°29'27"	32.04'	S21°52'57"E	64.05'
C14	67.77'	26.00'	149°20'22"	94.84'	N04°49'52"W	50.15'
C15	24.86'	24.00'	59°20'22"	13.67'	N49°49'52"W	24.01'
C16	27.57'	21.00'	75°13'41"	16.18'	N39°34'37"E	25.63'
C17	13.99'	109.00'	7°21'09"	7.00'	N73°30'53"E	13.98'
C18	6.28'	4.00'	90°00'00"	4.00'	S65°09'42"E	5.66'
C19	6.28'	4.00'	90°00'00"	4.00'	N24°50'18"E	5.66'
C20	29.16'	21.00'	79°34'10"	17.49'	S70°22'37"E	26.88'

LINE TABLE		
LINE	BEARING	LENGTH
L1	N53°38'49"E	70.98'
L2	N55°04'00"E	20.18'
L3	S17°47'53"E	13.78'
L4	S69°50'18"W	50.00'
L5	N20°09'42"W	52.00'
L6	N20°09'42"W	31.94'
L7	N78°42'24"E	26.51'
L8	N20°16'58"W	26.43'
L9	N26°58'43"E	12.34'
L10	N69°50'18"E	48.00'
L11	S30°35'32"E	12.20'
L51	N69°50'18"E	5.00'

° INDICATES A ROD SET UNLESS OTHERWISE NOTED



GRAPHIC SCALE



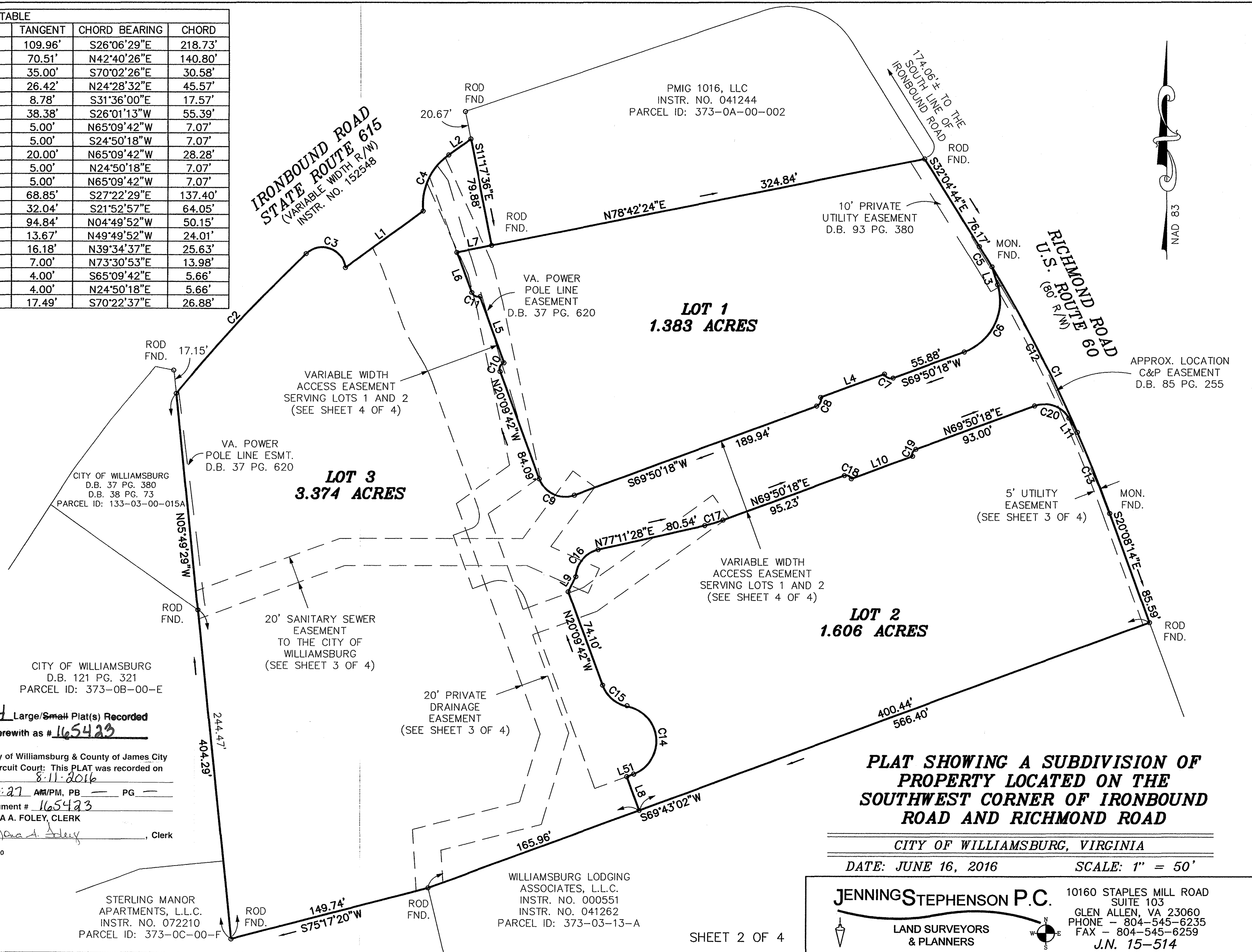
CITY OF WILLIAMSBURG
D.B. 121 PG. 321
PARCEL ID: 373-0B-00-E

4 Large/Small Plat(s) Recorded
herewith as # 165423

City of Williamsburg & County of James City
Circuit Court: This PLAT was recorded on
8-11-2016
at 3:27 AM/PM, PB PG
Document # 165423
MONA A. FOLEY, CLERK
Mona A. Foley, Clerk

STERLING MANOR
APARTMENTS, L.L.C.
INSTR. NO. 072210
PARCEL ID: 373-0C-00-F

WILLIAMSBURG LODGING
ASSOCIATES, L.L.C.
INSTR. NO. 000551
INSTR. NO. 041262
PARCEL ID: 373-03-13-A



**PLAT SHOWING A SUBDIVISION OF
PROPERTY LOCATED ON THE
SOUTHWEST CORNER OF IRONBOUND
ROAD AND RICHMOND ROAD**

CITY OF WILLIAMSBURG, VIRGINIA

DATE: JUNE 16, 2016

SCALE: 1" = 50'

JENNINGSSTEPHENSON P.C.
LAND SURVEYORS
& PLANNERS

10160 STAPLES MILL ROAD
SUITE 103
GLEN ALLEN, VA 23060
PHONE - 804-545-6235
FAX - 804-545-6259
J.N. 15-514