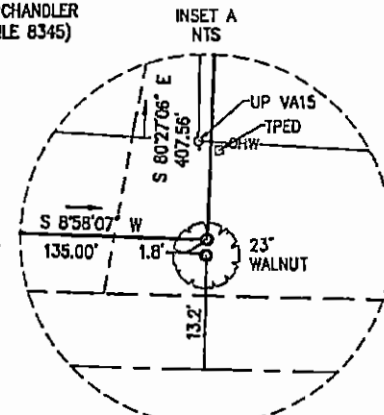
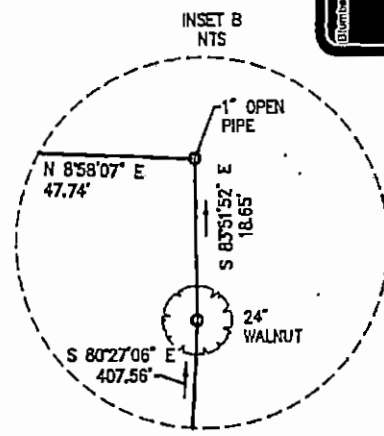
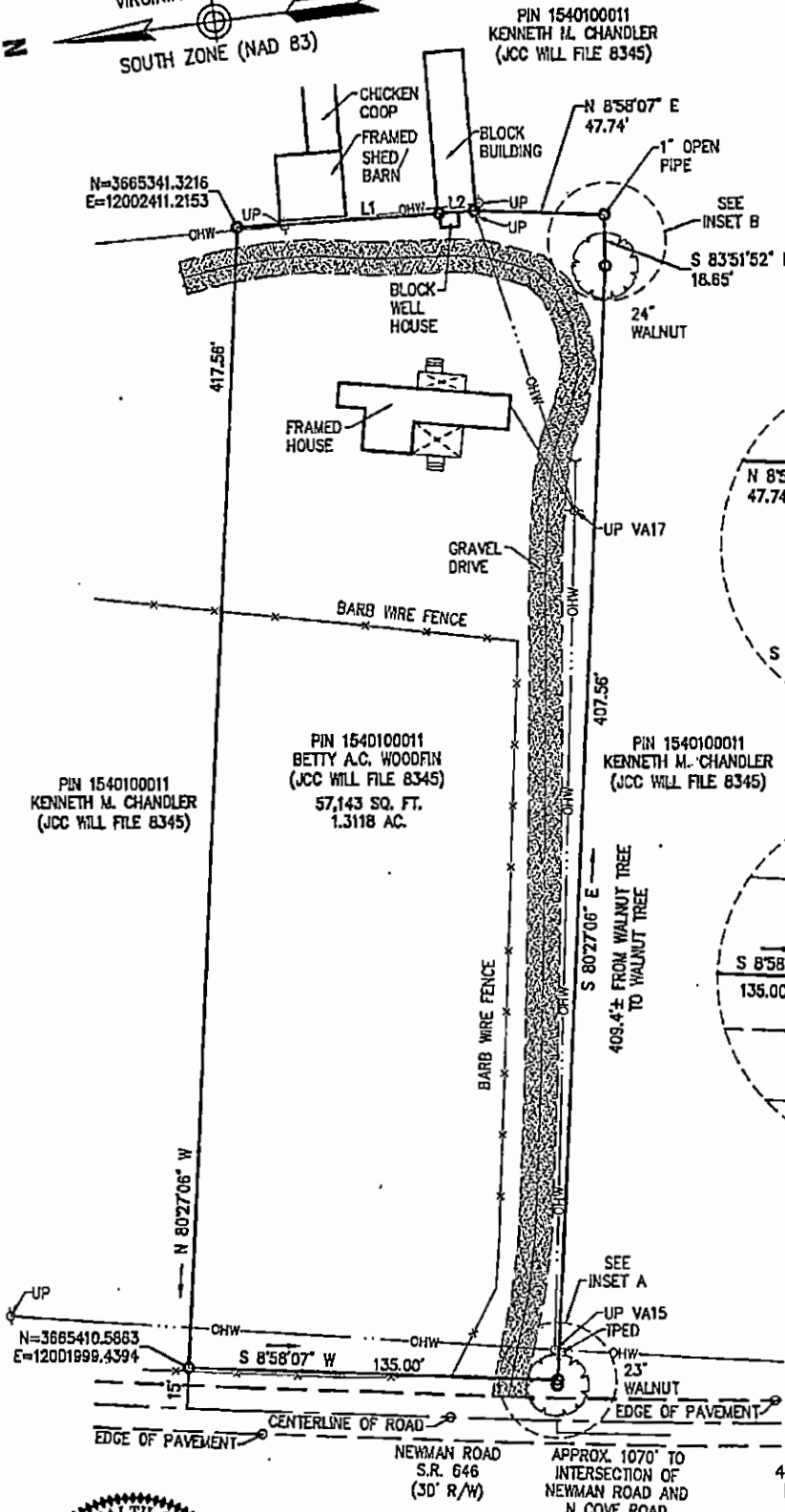


LINE DATA TABLE		
SEGMENT	LENGTH	BEARING
L1	73.85'	N3°22'54"E
L2	12.82'	N2°32'26"E

LEGEND

UP= UTILITY POLE
 OHW= OVERHEAD WIRE(S)
 TPED= TELECOMMUNICATIONS PEDESTAL



**SURVEY EXHIBIT
 7742 NEWMAN ROAD**

JAMES CITY COUNTY, VIRGINIA
 DATE: 9/9/16
 SCALE 1"=40'

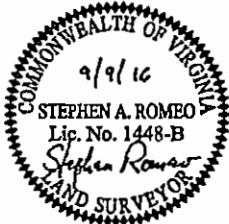
TITLE REPORT NOT FURNISHED,
 EASEMENT IF ANY NOT SHOWN.



PIN 1540100011
 KENNETH M. CHANDLER
 (JCC WILL FILE 8345)
 57,143 SQ. FT.
 1.3118 AC.

PIN 1540100011
 KENNETH M. CHANDLER
 (JCC WILL FILE 8345)

PIN 1540100011
 KENNETH M. CHANDLER
 (JCC WILL FILE 8345)



SURVEYOR'S CERTIFICATION

I HEREBY CERTIFY THAT TO THE BEST OF MY KNOWLEDGE AND BELIEF, THIS SURVEY COMPLIES WITH THE APPLICABLE REQUIREMENTS ESTABLISHED BY THE COMMONWEALTH OF VIRGINIA BOARD FOR ARCHITECTS, PROFESSIONAL ENGINEERS, LAND SURVEYORS, CERTIFIED INTERIOR DESIGNERS AND LANDSCAPE ARCHITECTS EFFECTIVE JULY 1, 2010.

DATE OF FIELD SURVEY: 3/25/16



Vanasse Hangen Brustlin, Inc.
 Transportation Land Development Environmental Services
 251 McLeary Circle, Suite 3
 Williamsburg, Virginia 23185
 (757) 220-0500 • FAX (757) 220-8544
 33966.00